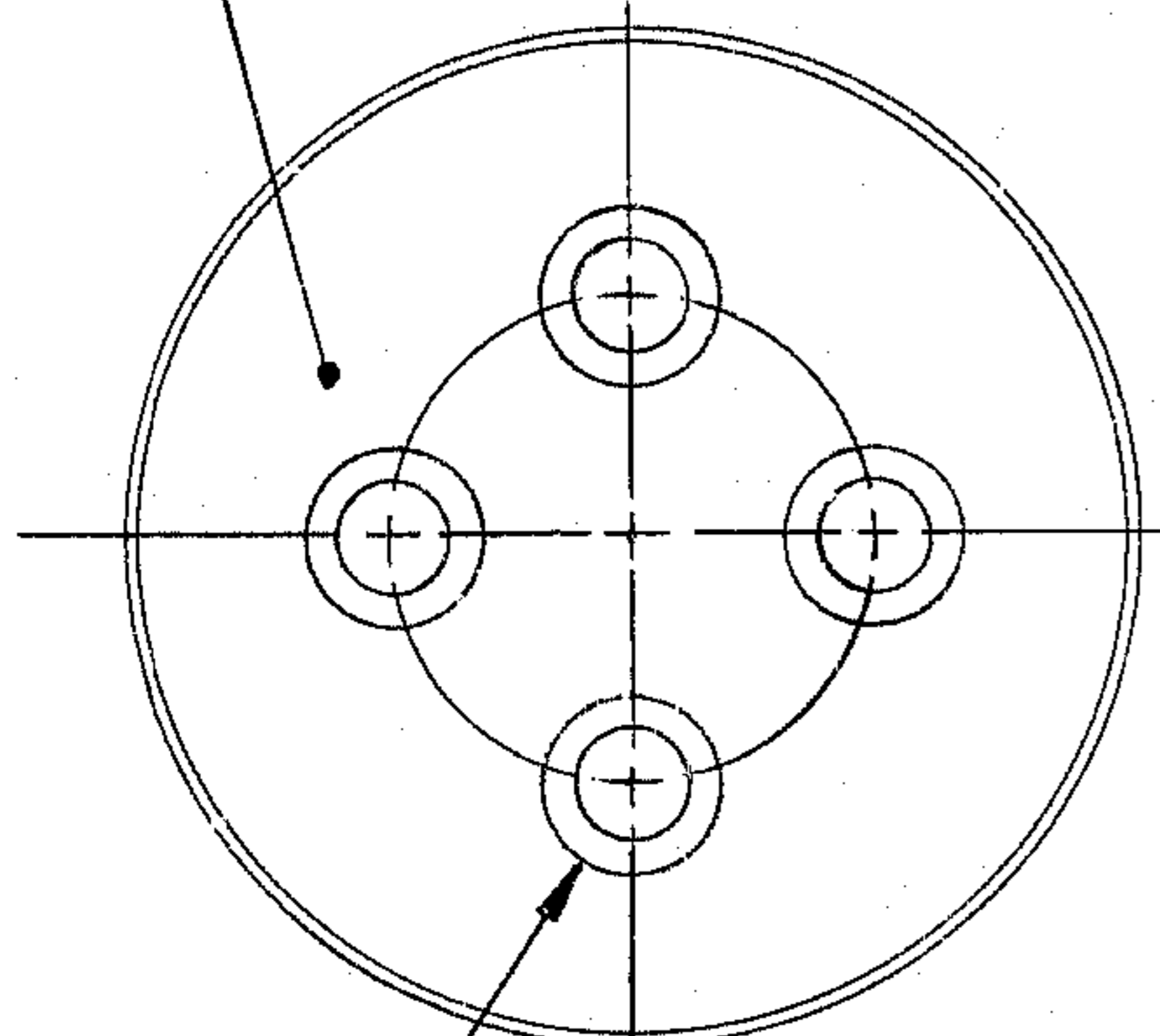


THIS DOCUMENT CONTAINS INFORMATION PROPRIETARY TO WESTERN GEAR CORPORATION. ALL DESIGN, MANUFACTURING, REPRODUCTION, USE, PATENT, AND SALES RIGHTS REGARDING THE SAME ARE HEREBY EXPRESSLY RESERVED BY WESTERN GEAR CORPORATION. THIS DOCUMENT IS SUBMITTED FOR REFERENCE PURPOSES ONLY AND SHALL NOT BE DISCLOSED TO ANY UNAUTHORIZED PERSON OR INCORPORATED INTO ANY OTHER PROJECT.

REVISIONS				
ZONE	LTR	DESCRIPTION	DATE	APPROVED

CHEM ETCH OR VIBRO SCRIBE  
PART NO: 2150.300B016



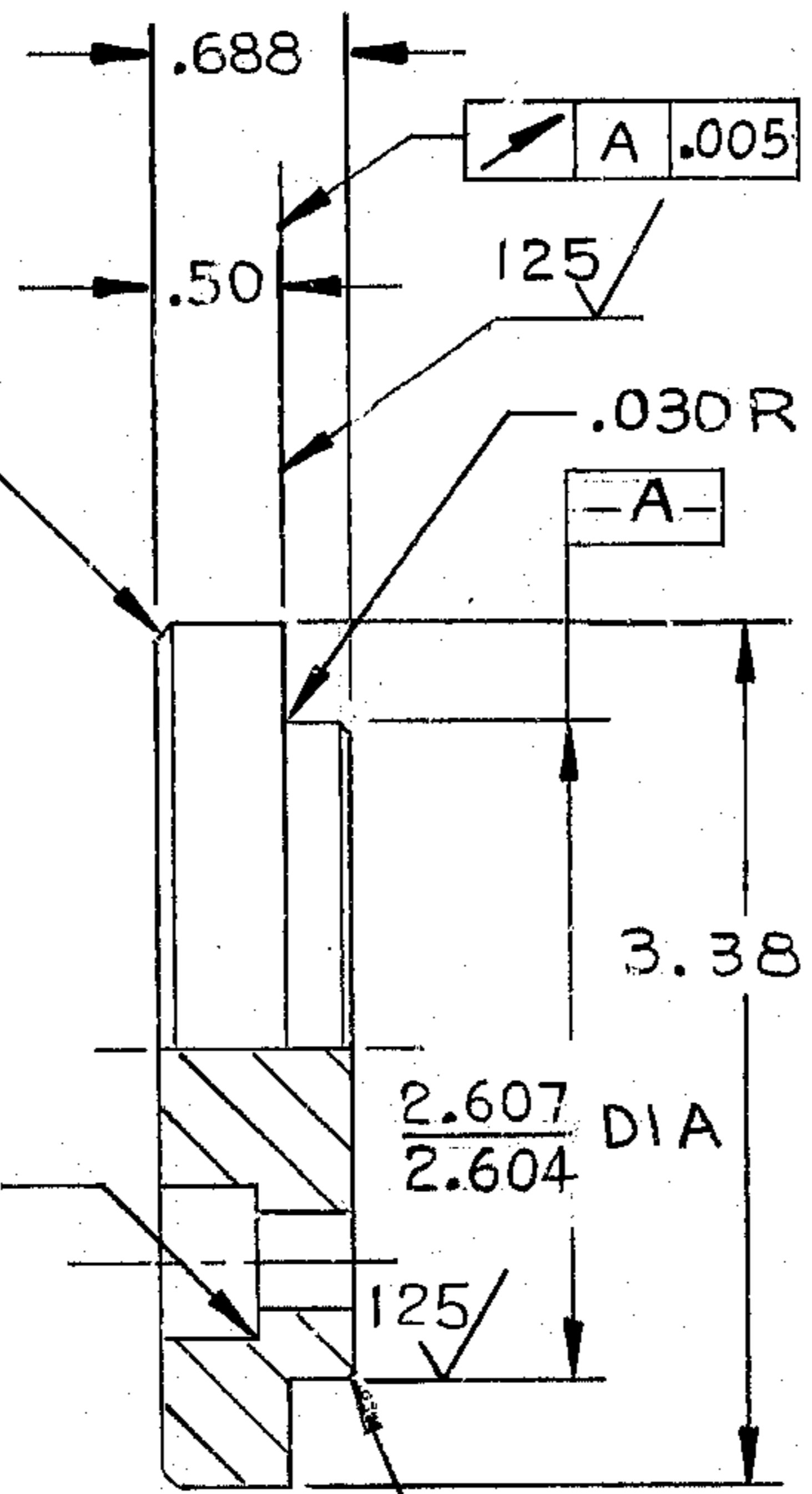
.435 DIA-THRU 250/  
.445  
.625 CBORE-.38 DEEP 250/  
.650

4 HOLES LOCATED AS SHOWN ON 1.625 DIA BSC

⊕ A .030 DIA

.060 x 45° CHAM

.030 R TYP



A .005

125/

.030 R

-A-

3.38 DIA

2.607 DIA  
2.604

125/

.060 x 45° CHAM

NOTES: UNLESS OTHERWISE SPECIFIED:

- 1.- ALL DIMENSIONS ARE IN INCHES.
- 2.- INTERPRET DIMENSIONING & TOLERANCING PER USA STANDARD USAS1-Y14.5-1966.
- 3.- SURFACE ROUGHNESS 250/ ALL OVER PER USA STANDARD USAS-B46.1-1962.
- 4.- MATERIAL: STEEL BAR 1215 PER QQ-S-637.

REF. FILE 1181

NEXT ASSY: 2150.300E002(82402-44175R2)

LIMITS ON MACHINED DIMENSIONS EXCEPT AS NOTED ANGULAR ± 1° 0' LINEAR X = ± .1 .XX = ± .03 .XXX = ± .010 FRACTIONAL ± 1/32  BREAK ALL SHARP EDGES	150 IN. STELLAR TELESCOPE MTG	<b>WESTERN</b> GEAR CORPORATION	HEAVY MACHINERY DIVISION EVERETT, WASHINGTON	
	DRAWN <i>L. Aguirre</i> 7-14-68 CHECK <i>B. Smith</i> 10-24-68 ENGR	CLAMP, COUPLING - DRIVE GEARBOX		
82402-44175C16	SIZE <b>B</b>	CODE IDENT NO. <b>16603</b>	<b>2150.300B016</b>	REV
APPROVED <i>js</i>	SCALE 1/1	WT. — LB	SHEET 1 OF 1	

44175C16