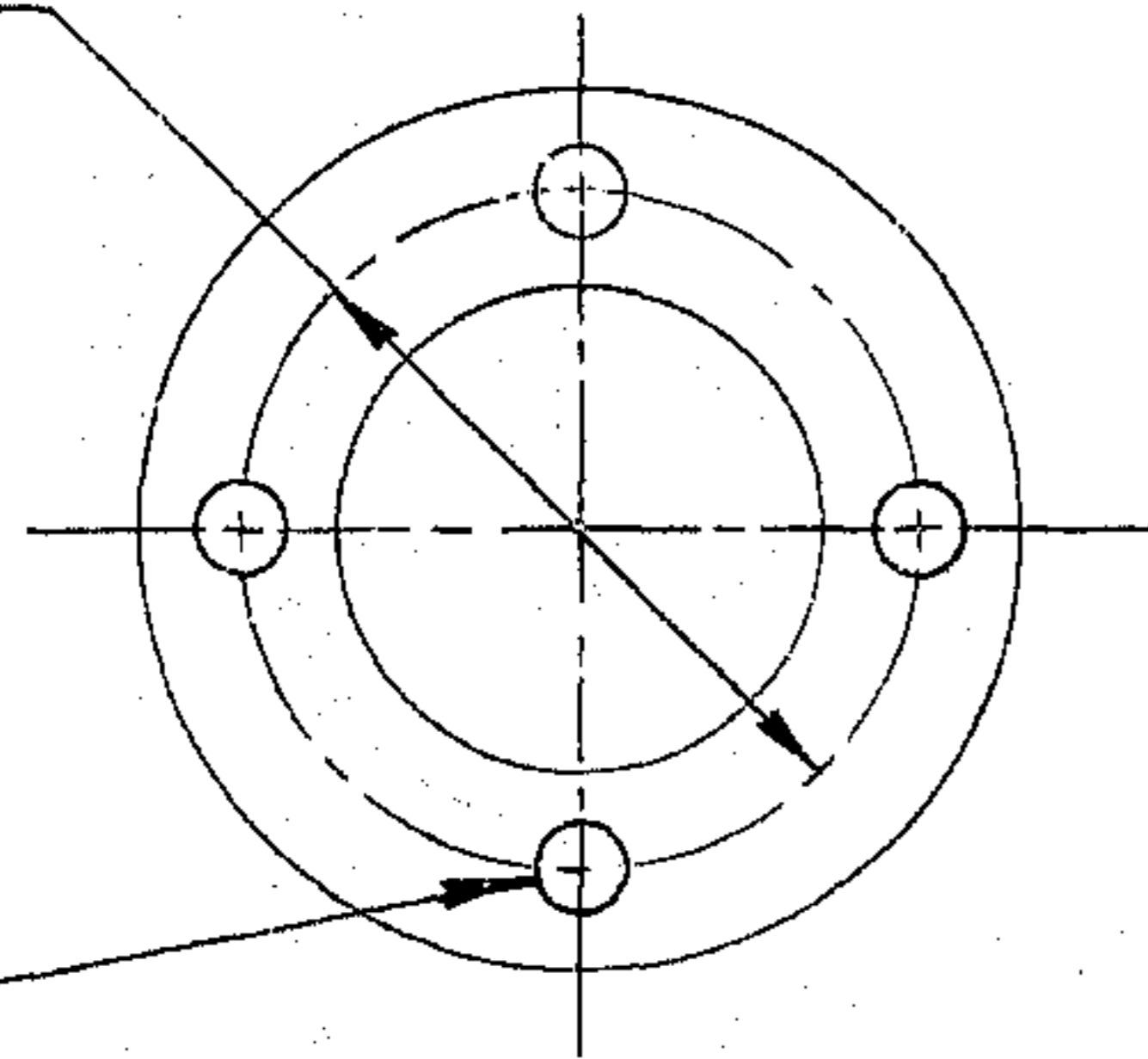
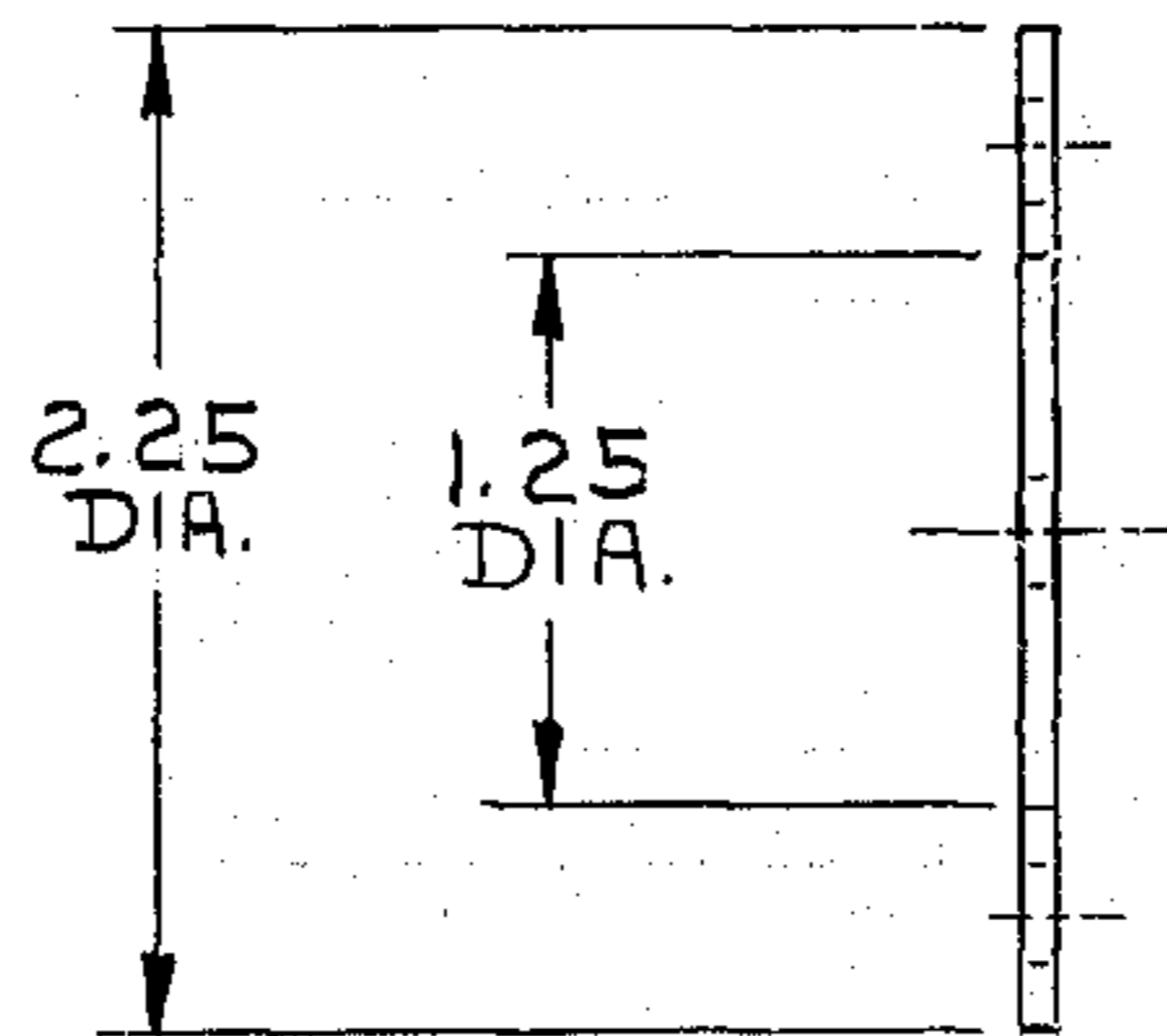


1.75 B.C.



1/4 DIA.  
4-HOLES  
EQUALLY SPACED



1/16 STOCK REF.

MATERIAL: BLACK NEOPRENE  
SOFT GRADE  
35/45 DUROMETER

FOR ASSEMBLY SEE 2120-E141

				<b>TOLERANCES UNLESS OTHERWISE NOTED</b> DECIMAL DIMENSIONS 00.00 ± .010 00.000 ± .003 FRACTIONAL DIMENSIONS UP TO 18" ± 1/64 18" TO 50" ± 1/32 50" & OVER ± 1/16 BREAK SHARP EDGES ALL SURFACES TO HAVE 125 FINISH UNLESS OTHERWISE NOTED.		<b>KITT PEAK NATIONAL OBSERVATORY</b> OPERATED BY THE ASSOCIATION OF UNIVERSITIES FOR RESEARCH IN ASTRONOMY, INC. UNDER CONTRACT WITH NATIONAL SCIENCE FOUNDATION	
				150" STELLAR TELESCOPE REF. FILE 1180		NAME GASKET-WIRING HORIZON DISCRIMINATING SWITCH SCALE FULL PRINT ISSUED	
				DES'D BY J.B.H. DATE 11-5-69 DRN BY G.FORD DATE 11-5-69 CH'KD BY [Signature] DATE 12-30-70	APP'D BY A.A.A. DATE 11-10-70 APP'D BY [Signature] DATE 11-10-70	DRAWING NUMBER <b>2150.290-B016</b>	
LET.	REVISION ON	ECR	DATE	BY	DATE	BY	REV.