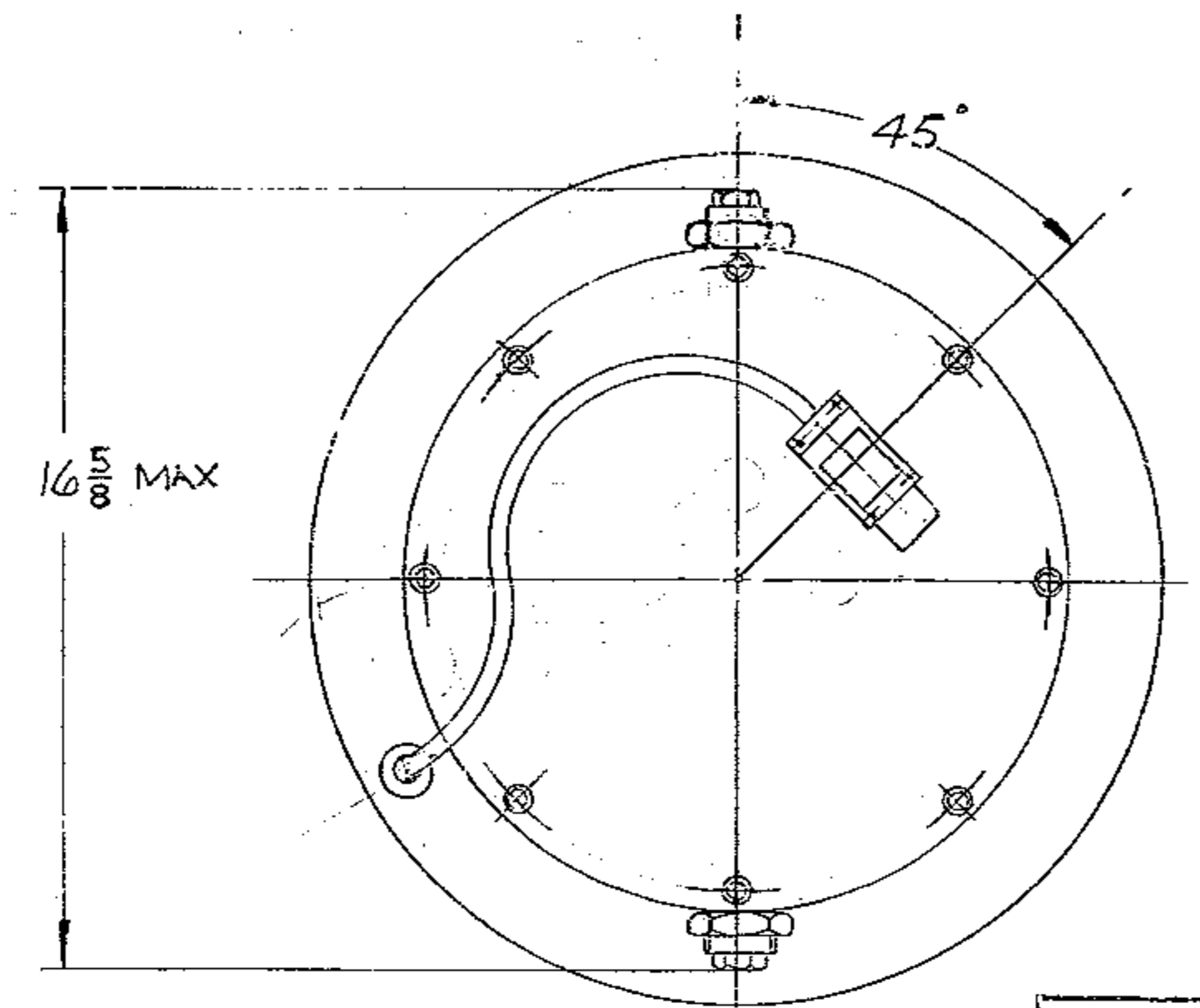
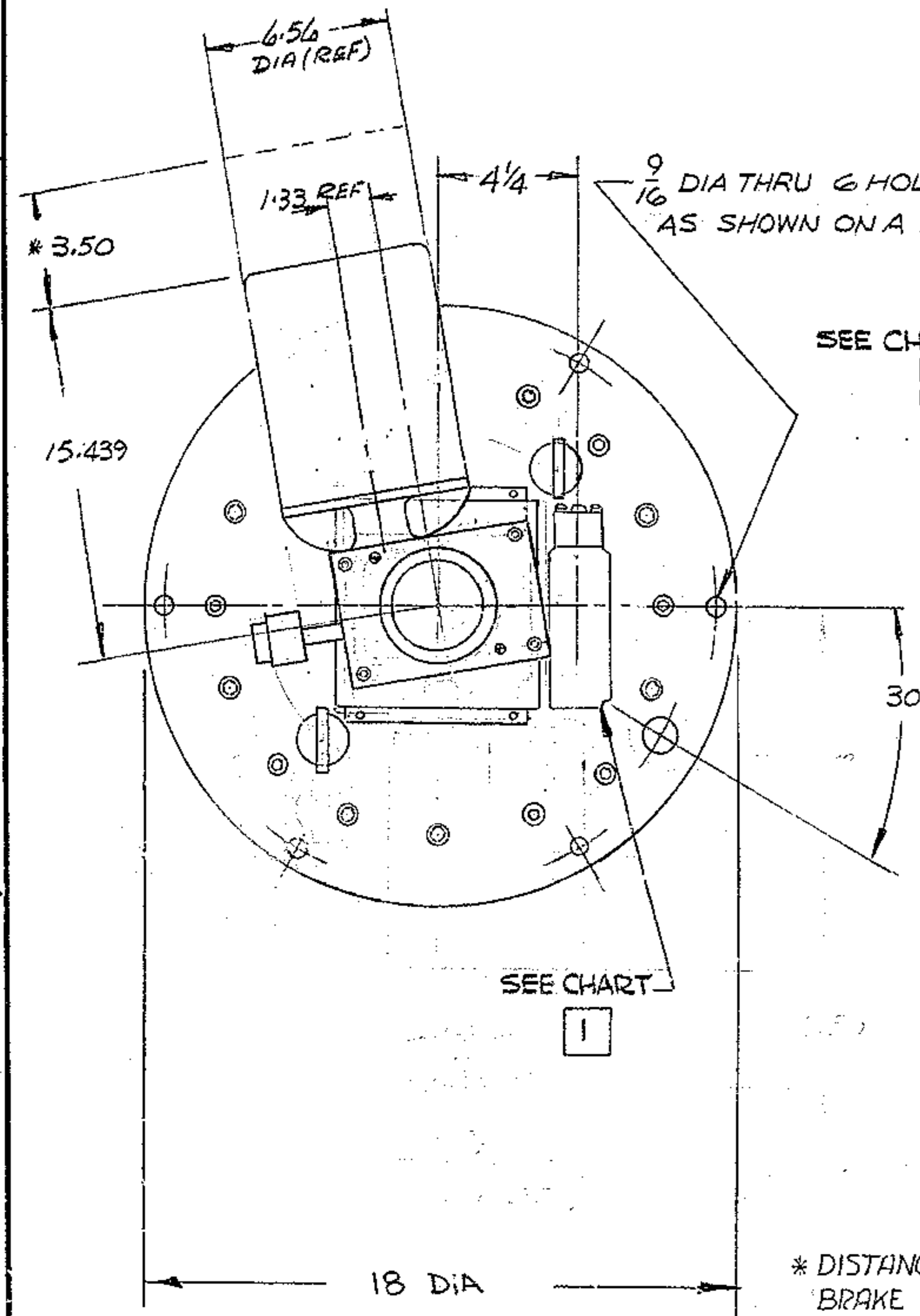
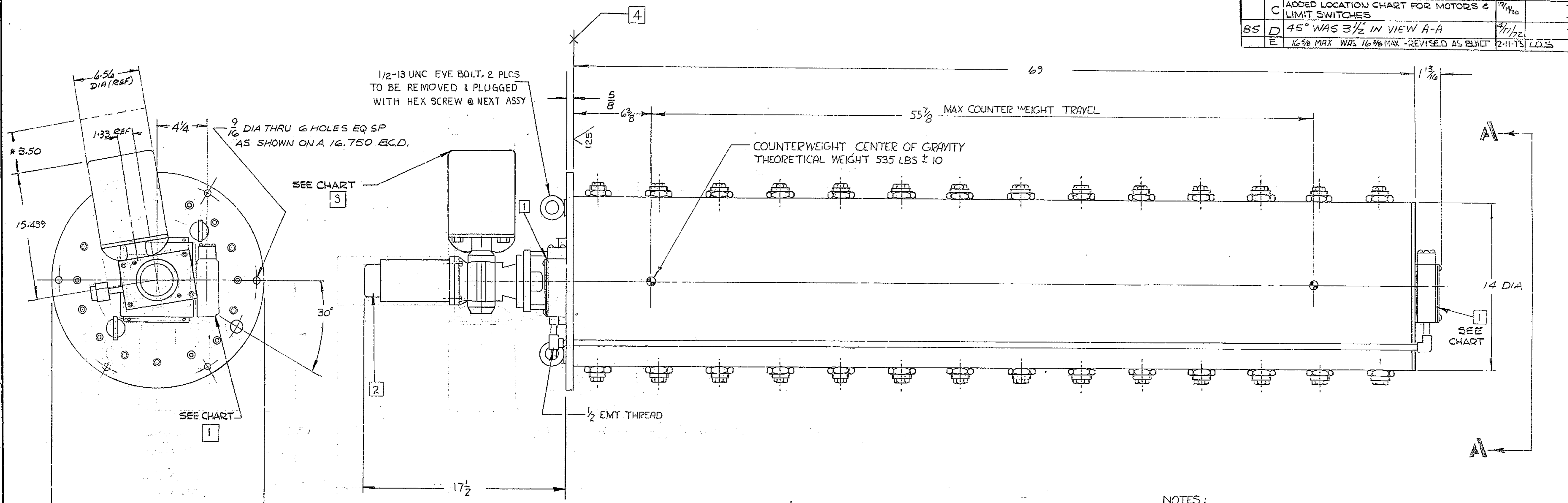


REVISIONS				
ZONE	LTR	DESCRIPTION	DATE	APPROVED
	A	REVISED PER AURA APP PRINT	9/24/68	
D3/D1	A	69 WAS 69 1/16   1 13/16 WAS 1 9/16.	9/23/68	
C8	A	REDUCER TURNED 10° A/CLOCK		
	B	ADDED DESC. TO EYEBOLTS, 1 25/32 WAS 2 5/8 ADDED IHLS33, IHLS34, & IHM10 CALLOUTS ADDED "60 CPS 3 PH." TO NOTE 3, ADDED NOTE 4 & SYMBOL 4, DELETED "OF MOUNTING MEMBERS" FROM C.G. NOTE	1/27/69	
	C	ADDED LOCATION CHART FOR MOTORS & LIMIT SWITCHES	1/14/70	
BS	D	45° WAS 3 1/2" IN VIEW A-A	2/17/72	
	E	16 5/8 MAX WAS 16 3/8 MAX - REVISED AS BUILT	2-11-73	LDS



LOCATION	MOTOR NO.	UPPER LIMIT SWITCH NO.	LOWER LIMIT SWITCH NO.
NO. EAST CORNER	IHM 10	IHLS 29	IHLS 30
SO. EAST CORNER	IHM 11	IHLS 31	IHLS 32
SO. WEST CORNER	IHM 12	IHLS 33	IHLS 34
NO. WEST CORNER	IHM 13	IHLS 35	IHLS 36

- NOTES:
- 1 TWO LIMIT SWITCHES MICROSWITCH 4LSI
  - 2 C.I.C. SERIES 300 1K OHM POTENTIOMETER OR EQUAL
  - 3 1/2 HP 1750 RPM DRIPPROOF MOTOR, 60 CPS 3 PH. 230/460 VAC WITH INTEGRAL BRAKING NEMA FRAME 56C
  - 4 ALL SURFACES ARE FINISH PAINTED PER W.G.C. SPEC 511 EXCEPT SURFACES MARKED 4

WESTERN GEAR CORPORATION  
CONSTRUCTION PROJECTS  
DEPARTMENT  
APPROVED FOR  
PROCUREMENT  
DATE 89616 2 435

NEXT ASSY 2150.280 E001 (WG.N 102,803)

FIND NO.	PART NO.	DESCRIPTION	QTY	MATERIAL	CODE IDENT
LIST OF MATERIAL (LM)					
LIMITS ON MACHINED DIMENSIONS EXCEPT AS NOTED ANGULAR = ± 1° 0'		150 IN STELLAR TELESCOPE MOUNTING		WESTERN GEAR CORPORATION HEAVY MACHINERY DIVISION EVERETT, WASHINGTON	
LINEAR: X = ± .1 XXX = ± .2 XX = ± .03 FRACTIONAL = ± .005		DRAWN <i>J. Motz</i> 1-16-68 CHECK <i>Gene Russo</i> 26 JAN 68		OUTLINE, COUNTER WEIGHT, DECLINATION AXIS	
BREAK ALL SHARP EDGES		ENGR		WG.E 107,503	
MATERIAL		APPROVED		SIZE CODE IDENT NO. D 16603 2150.289D 001	
				SCALE 3/4" = 1" WT 1360 LB SHEET 1 OF 1	

FIG. NO. 1179