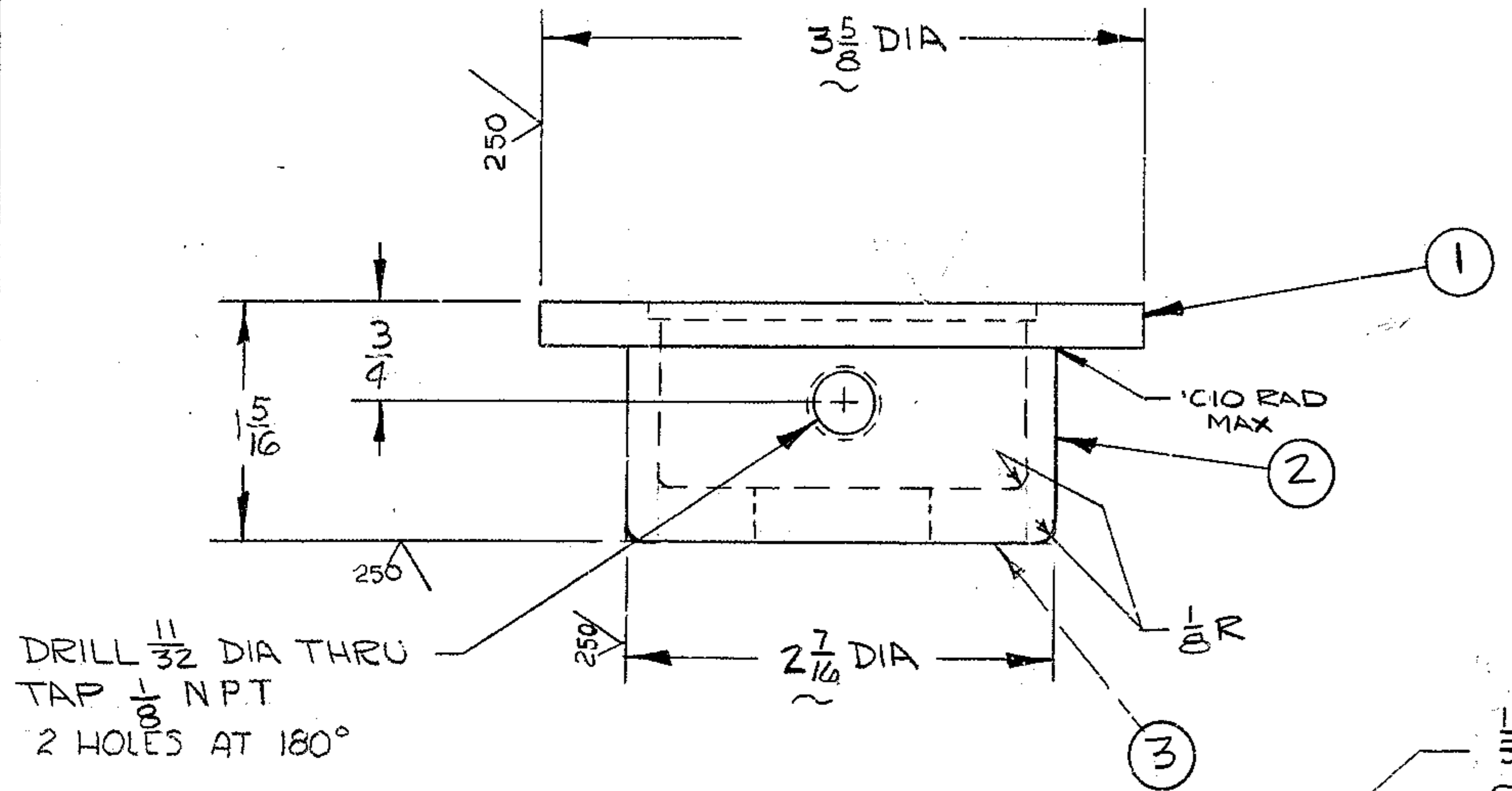


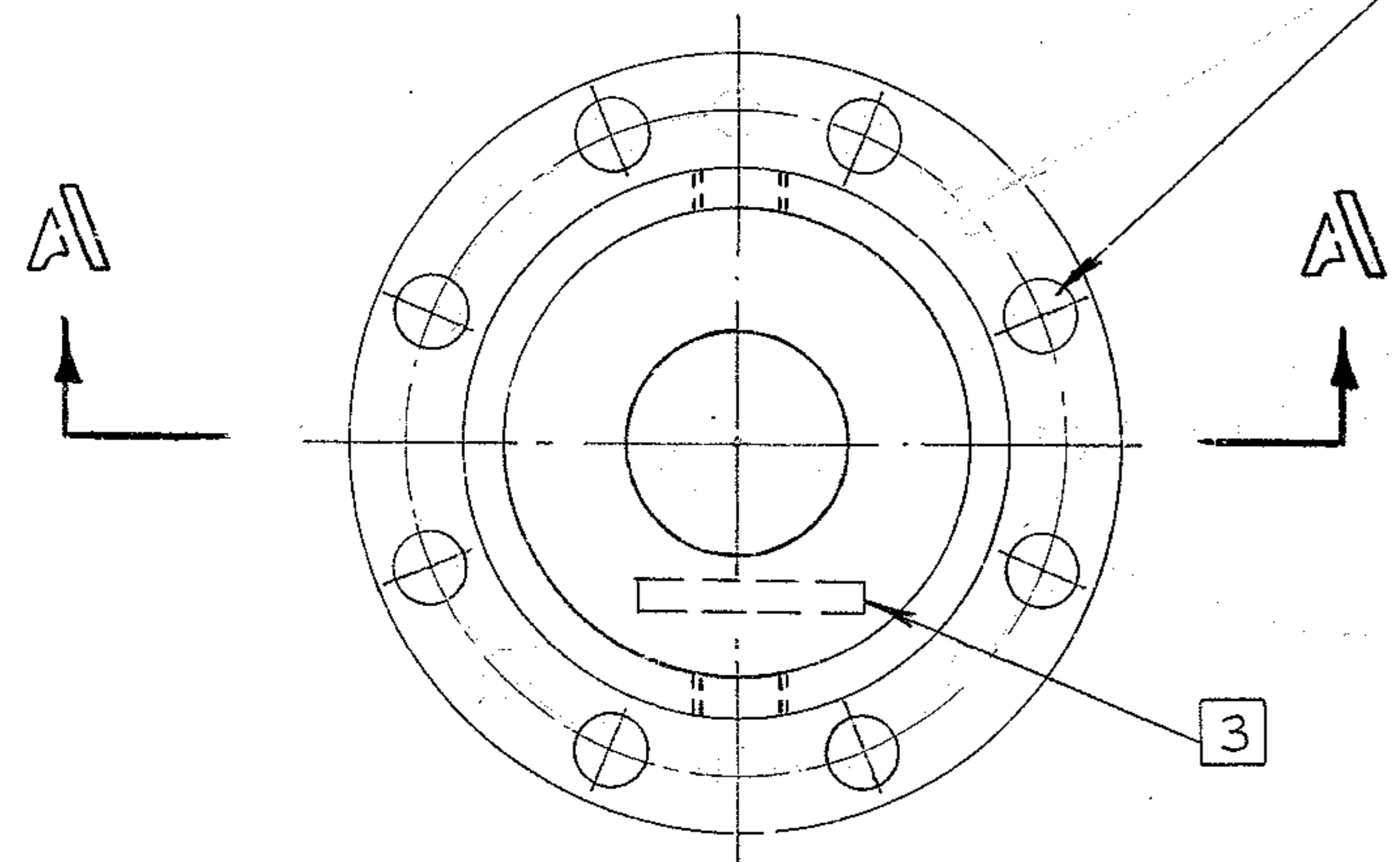
REVISIONS				
ZONE	LTR	DESCRIPTION	DATE	APPROVED
	A	REVISED PER AURA APP PRINT.	9/23/68	
	B	ADDED E.A.N. TO NOTE 2 & ADDED FINISH MARKS ON PART, $\oplus A.030$ DIA WAS $\odot A.010$ TIR	1/24/69	

WESTERN GEAR CORPORATION
 CONSTRUCTION PROJECTS
 DEPARTMENT
**APPROVED FOR
 PROCUREMENT**
 G.R. DATE 2-22-68



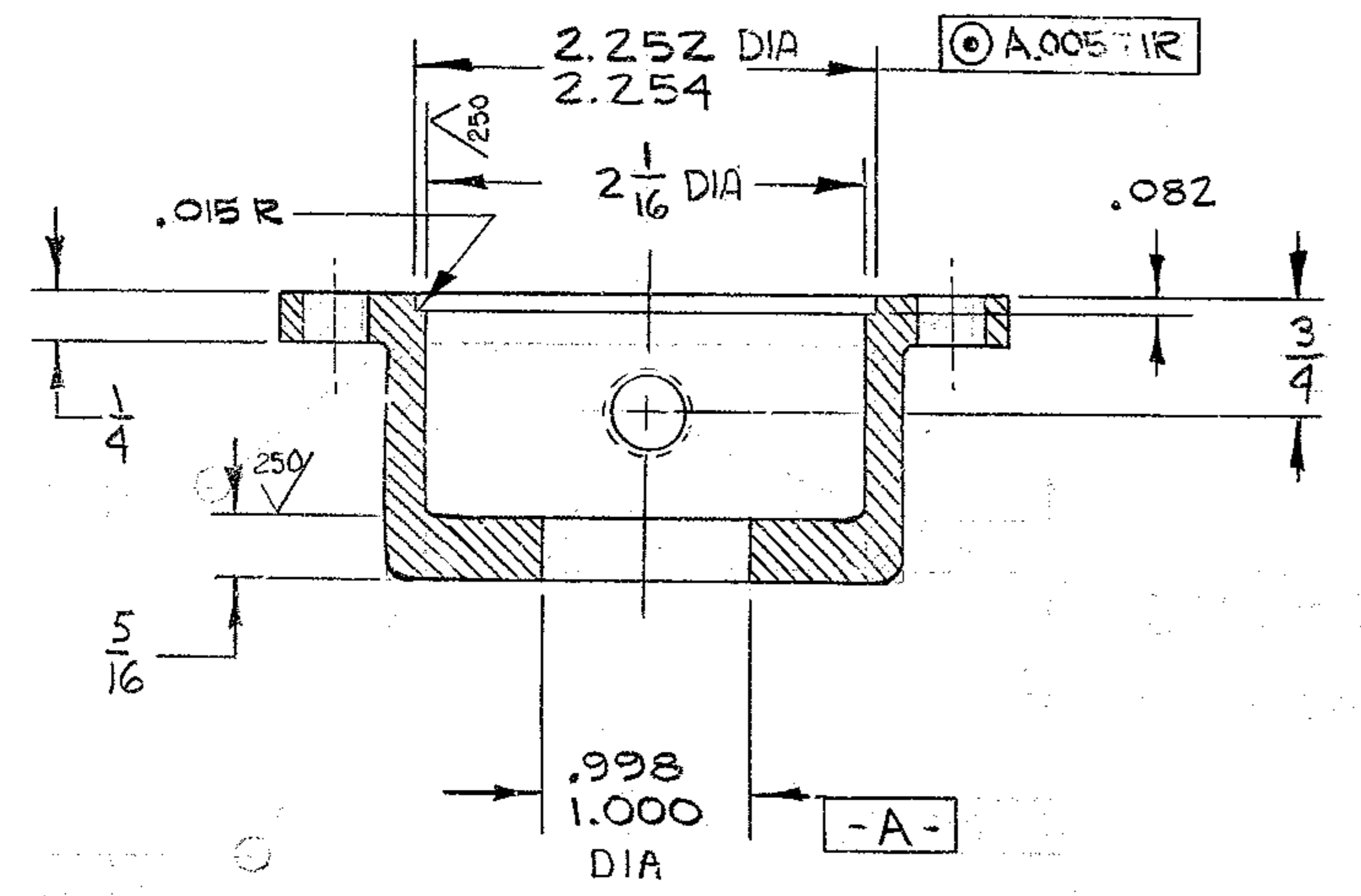
DRILL $\frac{11}{32}$ DIA THRU
 TAP $\frac{1}{8}$ NPT
 2 HOLES AT 180°

$\frac{11}{32}$ DRILL THRU - 8 HOLES EQUALLY
 SPACED ON A 3.000 DIA CIRCLE
 $\oplus A.030$ DIA



NOTES :

1. ALL DIMENSIONS ARE IN INCHES
2. FINISH MACHINE $\frac{125}{}$ ALL OVER EXCEPT AS NOTED
3. STAMP PART NO. 2150.289C005 WHERE SHOWN



SECTION A-A = A-A

REF. FILE 1179

NEXT ASSEMBLY 2150.289E002 (W.G.N 102 991)

FIND NO.	PART NO.	DESCRIPTION	QTY	MATERIAL	CODE IDENT
LIST OF MATERIAL (LM)					
LIMITS ON MACHINED DIMENSIONS EXCEPT AS NOTED ANGULAR = $\pm 1^\circ 0'$ LINEAR: X = $\pm .1$.XXX = $\pm .010$ XX = $\pm .03$ FRACTIONAL = $\pm 1/32$		150 ^{LD} STELLAR TELESCOPE MOUNTING		WESTERN GEAR CORPORATION	HEAVY MACHINERY DIVISION EVERETT, WASHINGTON
BREAK ALL SHARP EDGES		DRAWN <i>B. Buffen</i> 6/8/68 CHECK GR 20A168		RETAINER, BEARING	
MATERIAL 3 7/8 DIA X 1 1/2 LONG AISI C1018 OR EQ.		ENGR		DEC AXIS COUNTERWEIGHT	
APPROVED		W.G.D 107 555	SIZE C	CODE IDENT NO. 16603	2150.289C005
			SCALE 1/1	WT	LB SHEET 1 OF 1