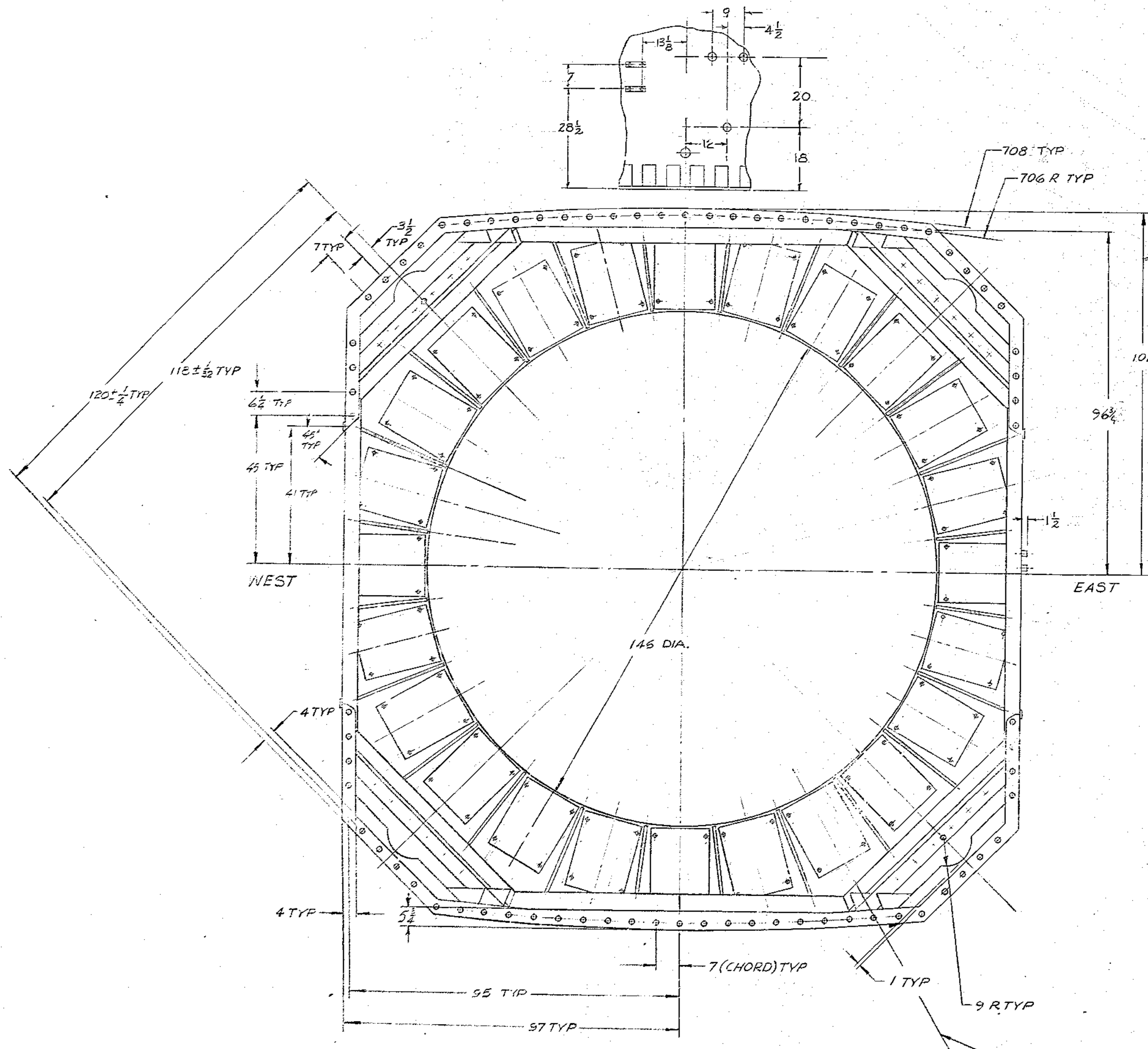
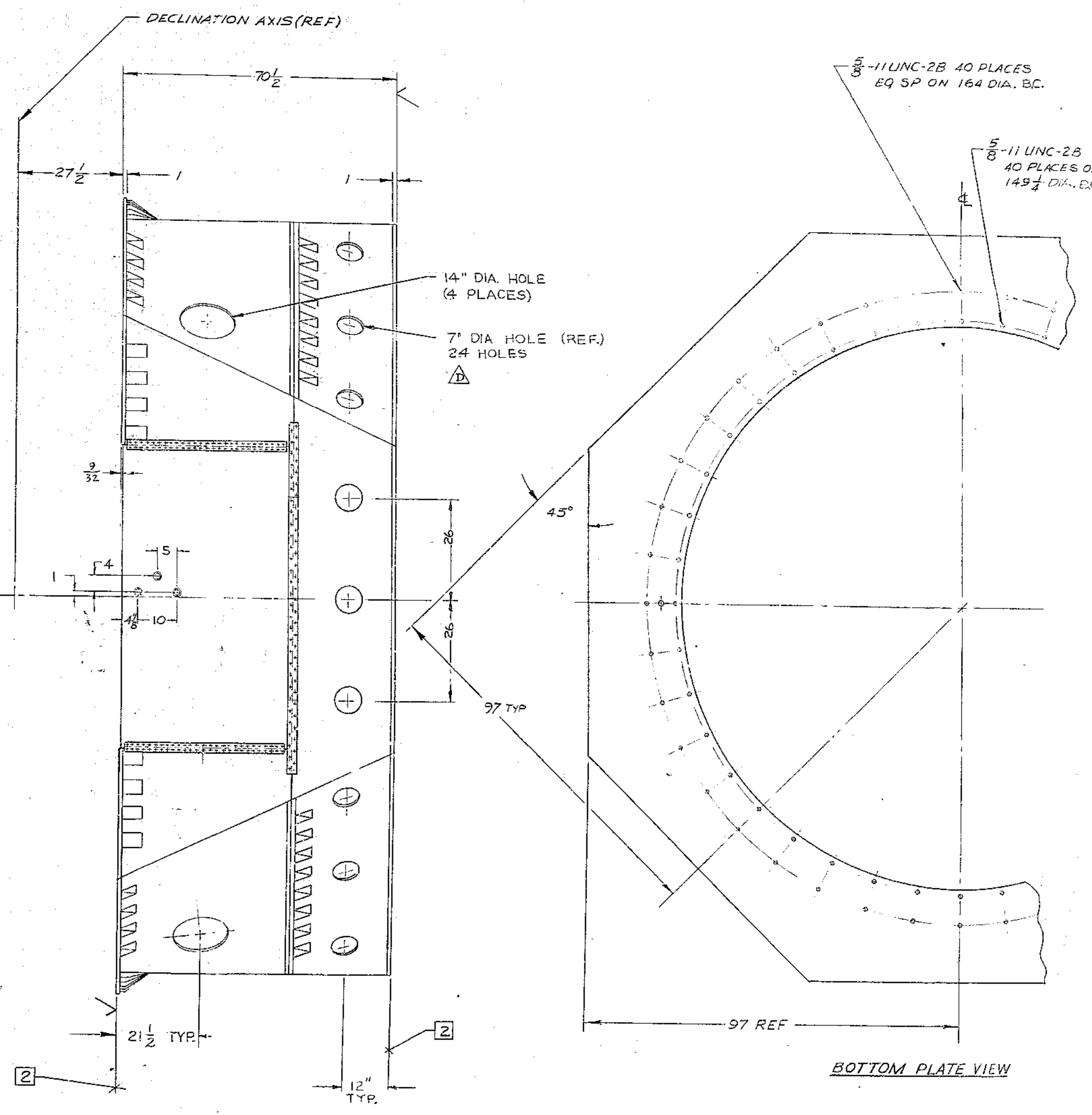
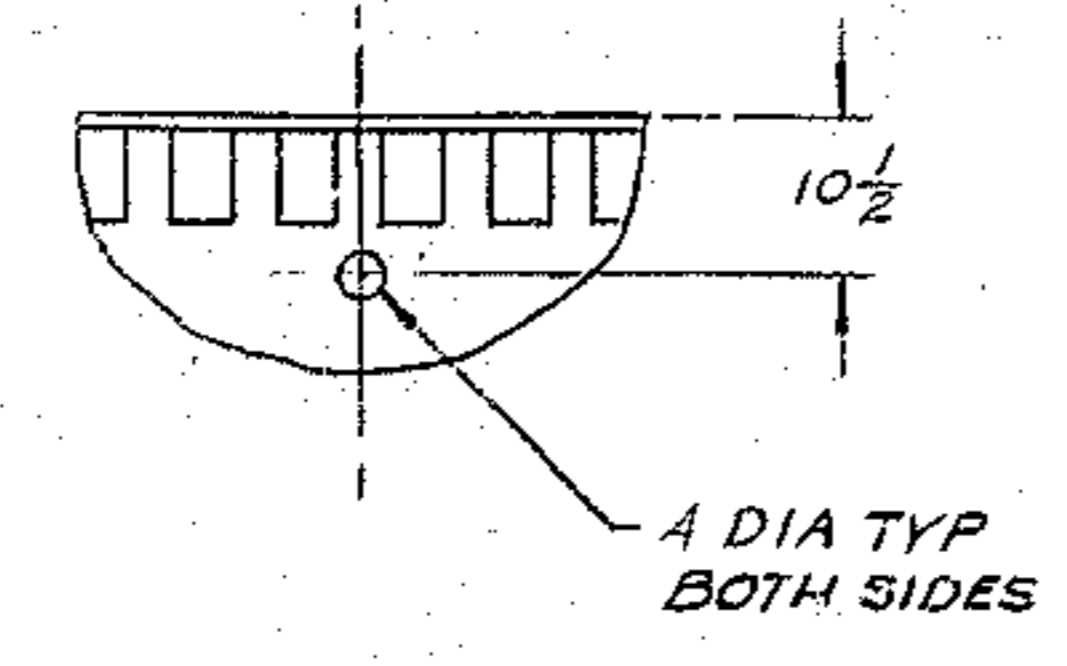


REVISIONS				
ZONE	LTR	DESCRIPTION	DATE	APPROVED
A		REVISED PER AURA APPROVED PRINT AND 2150.287 EOC SPLIT INTO 4 SECTIONS AS SHOWN	2-1-68	
B		REVISED PER AURA APPROVED PRINT	3/5/68	
C		REVISED PER AURA APPROVED PRINT DATED MAY 9 1968	5-26-68	
D		REMOVED (24) 7" DIA. HOLES	6-10-68	
E		DEL 4 HOLES IN PLAN VIEW, PR 3'S. DEL 12 PLACES FROM 24 HOLES. ENCL. 1/2 WAS 3/8	7/12/72	



PLAN VIEW
SCALE 3/4"=1"



- NOTES:
- 1. ALL DIMENSIONS ARE IN INCHES
 - 2. ALL SURFACES ARE FINISHED PAINTED PER W.G.C. SPEC NO. 511 EXCEPT SURFACES MARKED 2

WESTERN GEAR CORPORATION
CONSTRUCTION PROJECTS
DEPARTMENT
APPROVED FOR
PROCUREMENT
DATE 11/21/68

NEXT ASSY 2150.280 E001 (W.G.N. 102,803)				
FIND NO.	PART NO.	DESCRIPTION	QTY	MATERIAL
LIST OF MATERIAL (LM)				
LIMITS ON MACHINED DIMENSIONS EXCEPT AS NOTED		150 th STELLAR TELESCOPE MOUNTING		
ANGULAR = ± 1° 0'		WESTERN GEAR CORPORATION		
LINEAR:		HAYL MACHINERY DIVISION		
X = ± .1		EVERETT, WASHINGTON		
XX = ± .03		DRAWN BY: 5/15/68		
XXX = ± .010		CHECKED BY: 5/22/68		
FRACTIONAL = ± 1/32		ENGR:		
BREAK ALL SHARP EDGES				
MATERIAL		OUTLINE CASSEGRAIN CAGE SUPPORT SHELL ASSY		
W.G.N. 102894		SIZE CODE IDENT NO.		
APPROVED		E 16603 2150.287 EOC		
SCALE NOTED		WT 32.750 LB SHEET 1 OF		

FABRICATION TOLERANCES EXCEPT AS NOTED
0 TO 10 INCHES = 1/16
10 TO 50 INCHES = 1/8
50 INCHES & OVER = 1/4