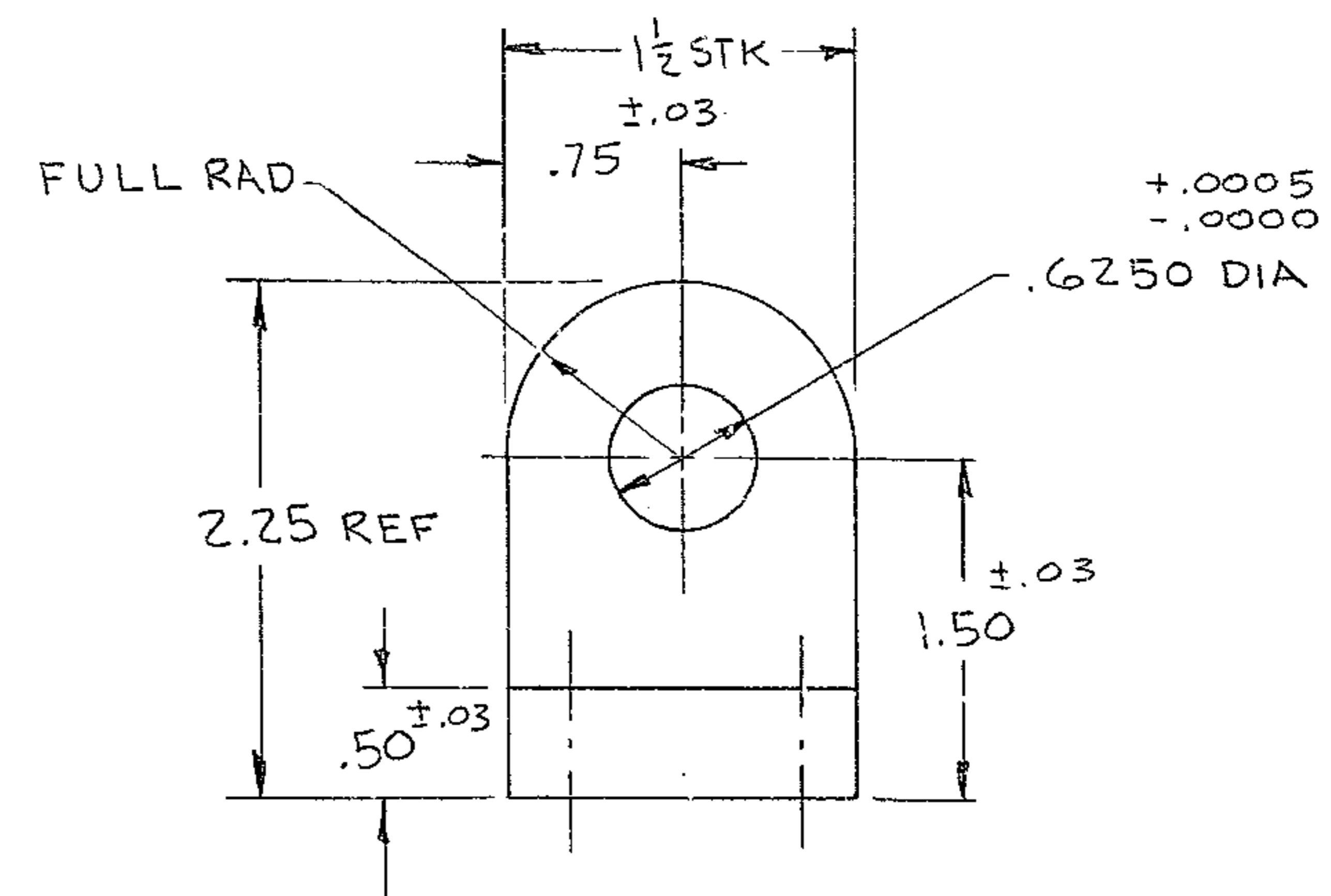
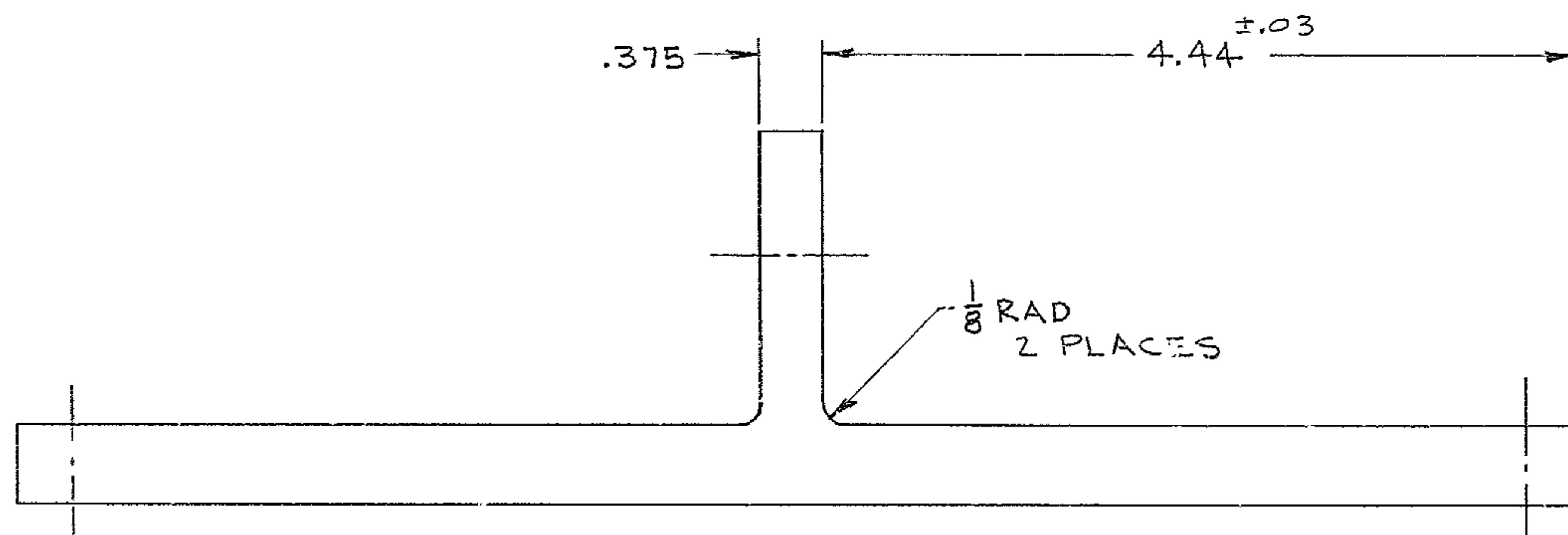
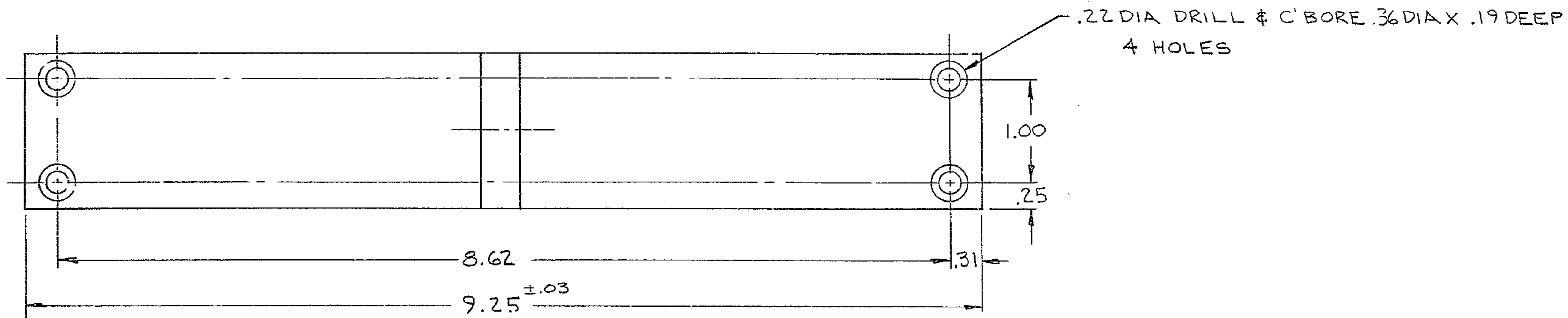


BILL OF MATERIAL

ITEM	QTY.	MATERIAL	DESCRIPTION	WEIGHT
------	------	----------	-------------	--------



MAT'L: 2024-T351 AL ALLOY
1 REQ'D , HARD ANODIZE

6. DIM. APPLY AFTER COATING.
 5-BREAK SHARP EDGES .03
 4-IDENTIFY-BY _____ AT LOCATION 4 "AURA INC. MADE IN U.S.A."
 3-STAMP MATCH MARKS ON ALL MATING PARTS WHERE NECESSARY.
 2-PROJECT DRAWINGS _____
 1-FOR NEXT ASSY. SEE 2150.284-E 202
- NOTES-

TOLERANCES UNLESS OTHERWISE NOTED			
DECIMAL DIMENSIONS 00.00 ±.010 00.000 ±.003			
FRACTIONAL DIMENSIONS UP TO 18' ± 1/64 18' TO 50' ± 1/32 50' & OVER ± 1/16			
ANGLES ± 0° - 30'			
ALL SURFACES TO HAVE 125/ FINISH UNLESS OTHERWISE NOTED.			
LET.	REVISION	ECR	DATE BY
A	ADDED DIM. TOLERANCES	0786	2-18-72 <i>RAC</i>

KITT PEAK NATIONAL OBSERVATORY			
OPERATED BY THE ASSOCIATION OF UNIVERSITIES FOR RESEARCH IN ASTRONOMY, INC. UNDER CONTRACT WITH NATIONAL SCIENCE FOUNDATION			
150" TELESCOPE			REF. FILE 1177
NAME T-BAR, CONTROL ARM - E. DEC. CABLE WRAP-UP ASSY			SCALE FULL
			PRINT ISSUED
DESIGNED BY <i>W.B.H.</i>	DATE 1-18-72	APPROVED BY	DATE
DRAWN BY <i>W.B.H.</i>	DATE 1-18-72	APPROVED BY <i>W.B.H.</i>	DATE 2-3-72
CHECKED BY <i>R. CHADD.</i>	DATE 2-3-72	APPROVED BY <i>G.G.</i>	DATE 1-21-72
DRAWING NUMBER 2150.284-C213			REV. A