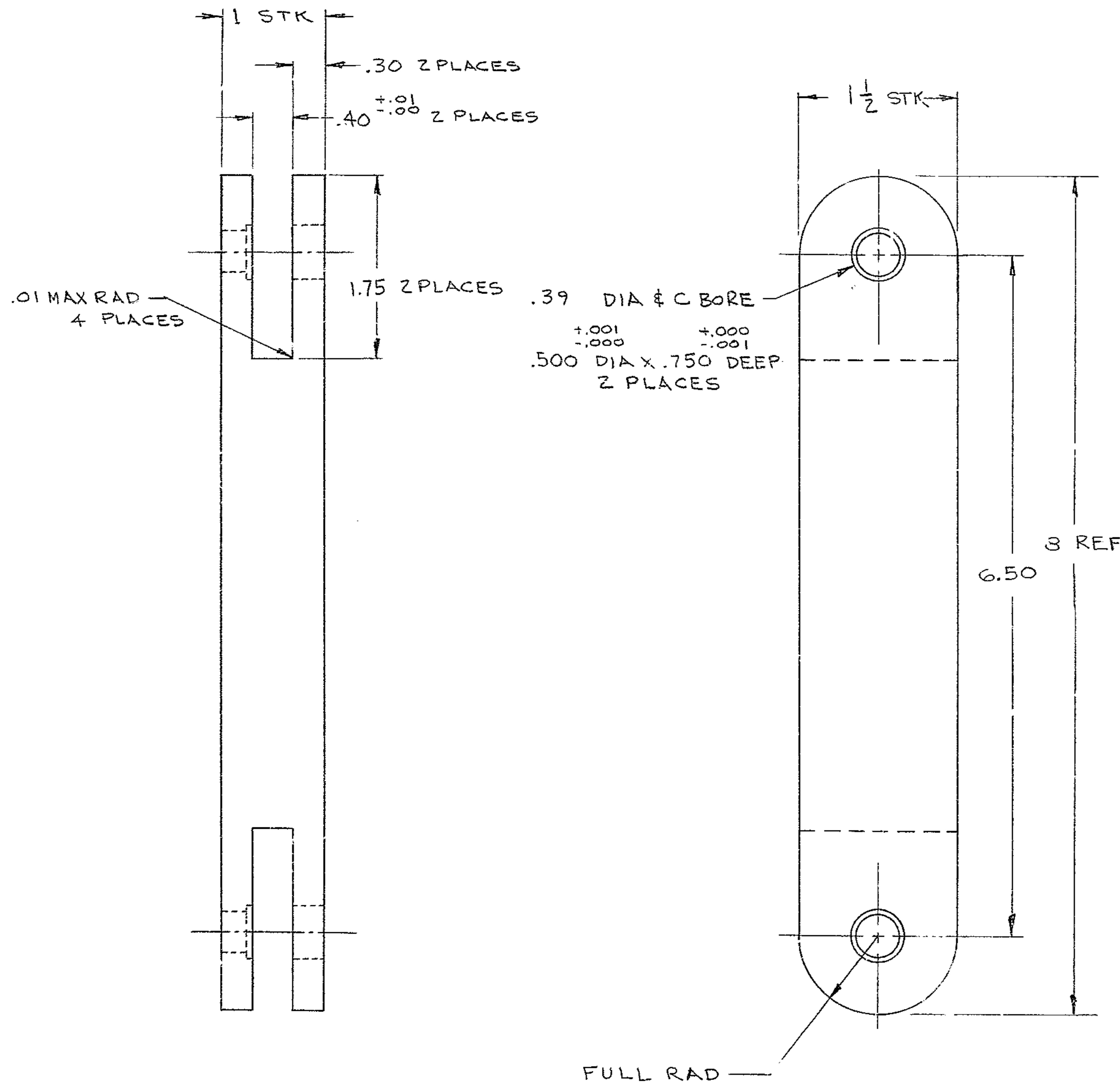


BILL OF MATERIAL

ITEM	QTY.	MATERIAL	DESCRIPTION	WEIGHT
------	------	----------	-------------	--------



MAT'L: 2024-T351 AL ALLOY
1 REQ'D, HARD ANODIZE

6. DIM. APPLY AFTER COATING.
 5-BREAK SHARP EDGES .06
 4-IDENTIFY BY _____ AT LOCATION 4, "AURA-INC. MADE IN U.S.A."
 3-STAMP MATCH MARKS ON ALL MATING PARTS WHERE NECESSARY.
 2-PROJECT DRAWINGS _____
 1-FOR NEXT ASSY. SEE 2150.284-E 202
- NOTES-

TOLERANCES UNLESS OTHERWISE NOTED			
DECIMAL DIMENSIONS 00.00 ± .010 00.000 ± .003			
FRACTIONAL DIMENSIONS UP TO 18' ± 1/64 18' TO 50' ± 1/32 50' & OVER ± 1/16			
ANGLES ± 0° - 30'			
ALL SURFACES TO HAVE $125\sqrt{\text{FINISH}}$ UNLESS OTHERWISE NOTED.			
A	MATERIAL CALLOUT WAS 2024-TA	0786	2-18-72 <i>RAC</i>
LET.	REVISION	ECR	DATE BY

KITT PEAK NATIONAL OBSERVATORY			
OPERATED BY THE ASSOCIATION OF UNIVERSITIES FOR RESEARCH IN ASTRONOMY, INC. UNDER CONTRACT WITH NATIONAL SCIENCE FOUNDATION			
150" TELESCOPE			REF. FILE 1177
NAME LINK, CONTROL ARM - E. DEC. CABLE WRAP-UP ASSY			SCALE FULL
			PRINT ISSUED
DESIGNED BY <i>V.B.M.</i>	DATE 1-17-72	APPROVED BY	DATE
DRAWN BY <i>M.J. Hays</i>	DATE 1-17-72	APPROVED BY <i>J.R.K.</i>	DATE 2-3-72
CHECKED BY <i>R. CHADD</i>	DATE 2-3-72	APPROVED BY <i>G.S.</i>	DATE 1-21-72
DRAWING NUMBER 2150.284-C210			REV. A