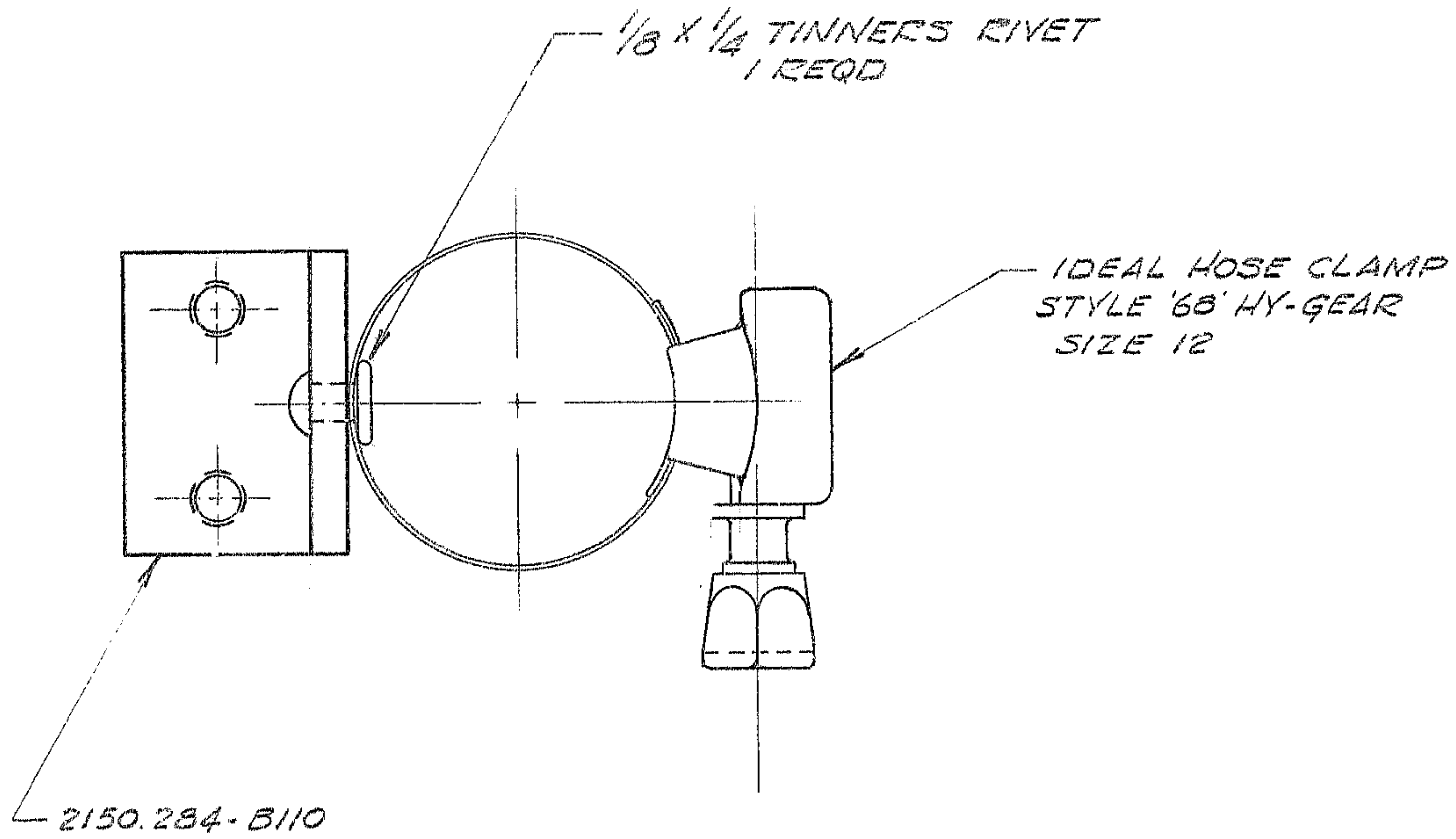


NOTES: UNLESS OTHERWISE NOTED

1. REMOVE ALL BURRS AND SHARP EDGES --- R MAX
2. MACHINED SURFACE ROUGHNESS $\frac{125}{\sqrt{\text{---}}}$
3. PUNCH .125 DIA HOLE IN CENTER OF CLAMP BAND & RIVET APPROX AS SHOWN

REVISIONS					
LTR	DESCRIPTION	ECR	DATE	BY	APVD



TOLERANCES UNLESS OTHERWISE NOTED		
DECIMALS	FRACTIONS	ANGULAR
.XX ± .03	± ---	± 0° 30'
.XXX ± .010		

KITT PEAK NATIONAL OBSERVATORY
OPERATED BY THE ASSOCIATION OF UNIVERSITIES FOR RESEARCH IN ASTRONOMY, INC.
 UNDER CONTRACT WITH NATIONAL SCIENCE FOUNDATION

NEXT ASSEMBLY	NAME				REF FILE
---	CABLE CLAMP ASSY,				1177
SCALE 2/1	DESIGNED BY	DATE	APPROVED BY	DATE	DWG NO.
PRINT ISSUED	DRAWN BY	DATE	APPROVED BY	DATE	2150.284-B111
	CHECKED BY	DATE	APPROVED BY	DATE	RELEASE DATE 5-11-79

PEB 5-11-79