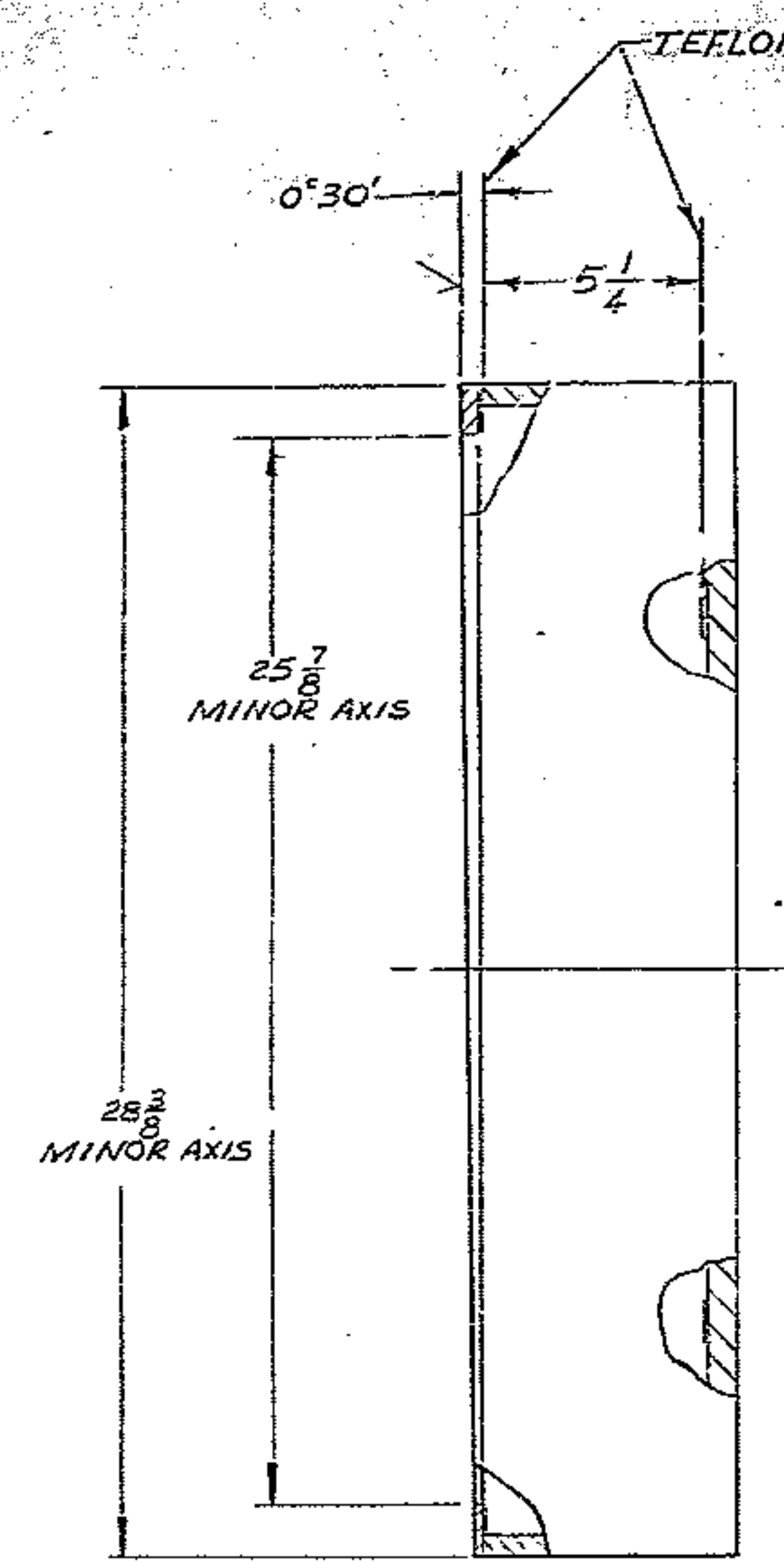
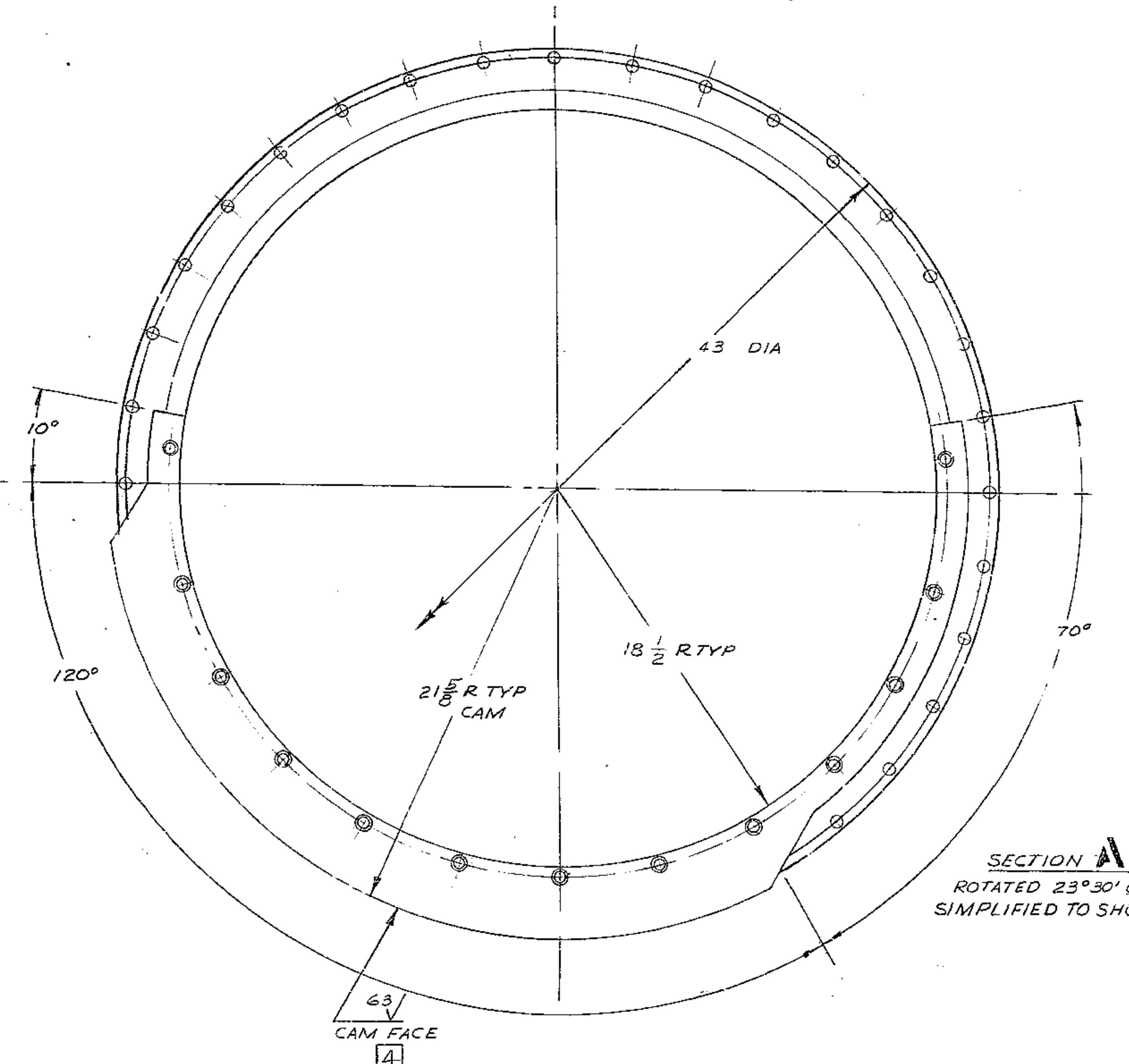
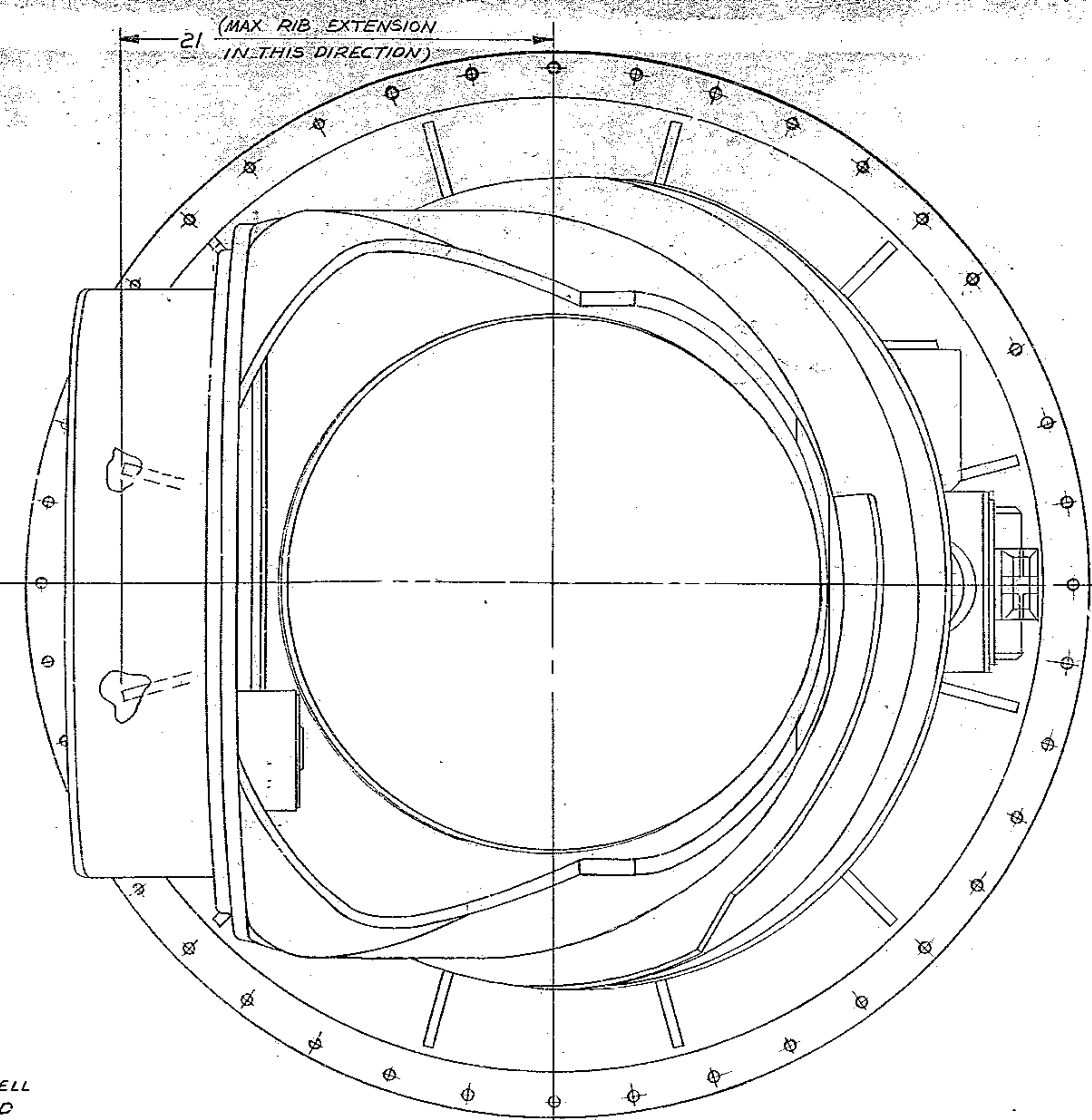


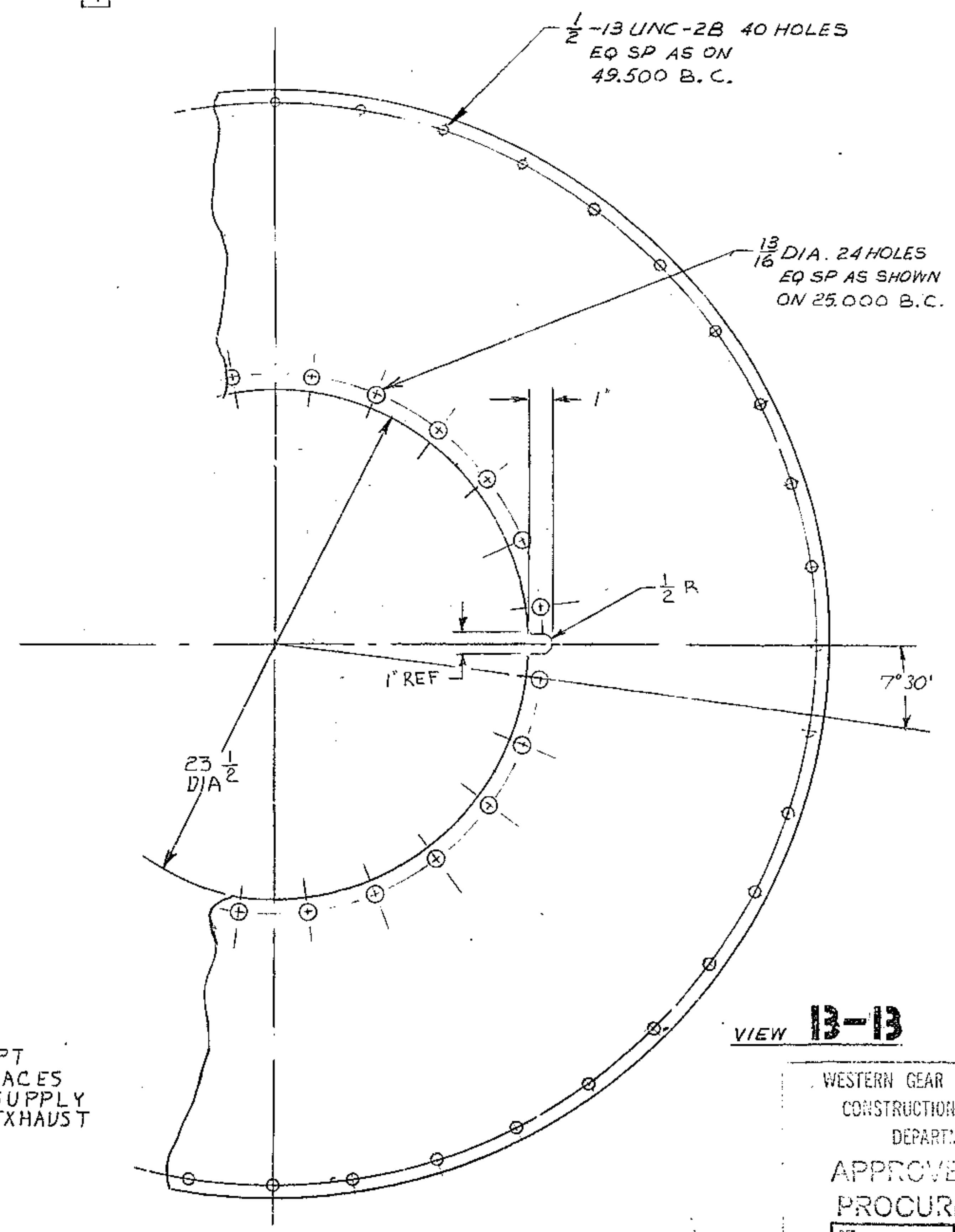
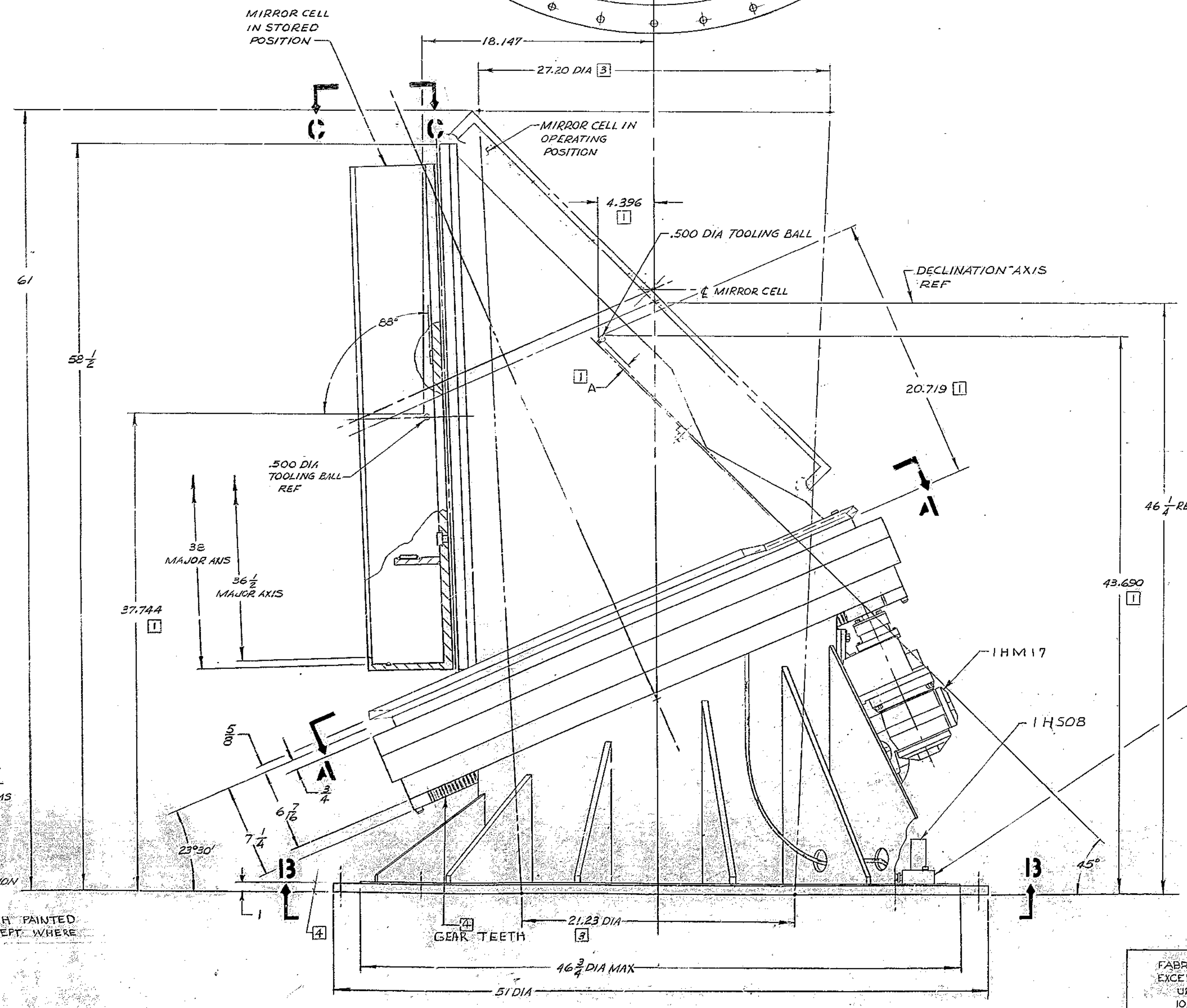
REVISIONS				
ZONE	LTR	DESCRIPTION	DATE	APPROVED
A		REVISED PER AURA FRUIT & GENERAL 3/1/51GUS		



VIEW C-C  
SCALE 3"=1'



SECTION A-A  
ROTATED 23°30' CLOCKWISE  
SIMPLIFIED TO SHOW CAM DIMS



VIEW B-B

- NOTES:
- 1 THESE DIMENSIONS ARE BASED ON 'A' DIM BEING .275, ANY DEVIATION FROM THIS DIMENSION NECESSITATES RECALCULATION OF THESE DIMS
  - 2 ALL MIRROR CELL DIMENSIONS APPLY WITH COLLIMATING DRIVES IN MID-POSITION.
  - 3 THE CONICAL SPACE DEFINED BY THESE DIAMETERS IS TO BE FREE OF INTERFERENCE WITH ANY PORTION OF THE COUDE'3 ASSY WHEN IN THE STORED POSITION.
  - 4 ALL SURFACES TO BE FINISH PAINTED WITH 3M #6 BLACK VELVET EXCEPT WHERE NOTED.

FABRICATION TOLERANCES EXCEPT AS NOTED  
UP TO 10 INCHES ± .001  
10 TO 50 INCHES ± .002  
50 INCHES & OVER ± .003

NEXT ASSY 2150.283E001 (WGN 102,806)					
FIND NO.	PART NO.	DESCRIPTION	QTY	MATERIAL	CODE IDENT
LIST OF MATERIAL (LM)					
LIMITS ON MACHINED DIMENSIONS EXCEPT AS NOTED		150 IN STELLAR TELESCOPE MOUNTING			
ANGULAR = ± 1° 0'		WESTERN GEAR CORPORATION HEAVY MACHINERY DIVISION EVERETT, WASHINGTON			
LINEAR: X = ± .01 XXX = ± .010		DRAWN BY COSTA 3-23-68			
XXX = ± .03 FRACTIONAL = ± 1/32		CHECKED BY [Signature] 8-10-68			
BREAK ALL SHARP EDGES		ENGR			
MATERIAL		OUTLINE COUDE'3 ASSEMBLY			
W.G.N. 102,896		SIZE CODE IDENT NO. E 16603		REV 2150.283 E.01 A	
APPROVED ORIGINAL		SCALE 3"=1' WT		3965 LB SHEET 1 OF 1	

WESTERN GEAR CORPORATION  
CONSTRUCTION PROJECTS  
DEPARTMENT  
APPROVED FOR  
PROCUREMENT  
REV. 1176 DATE