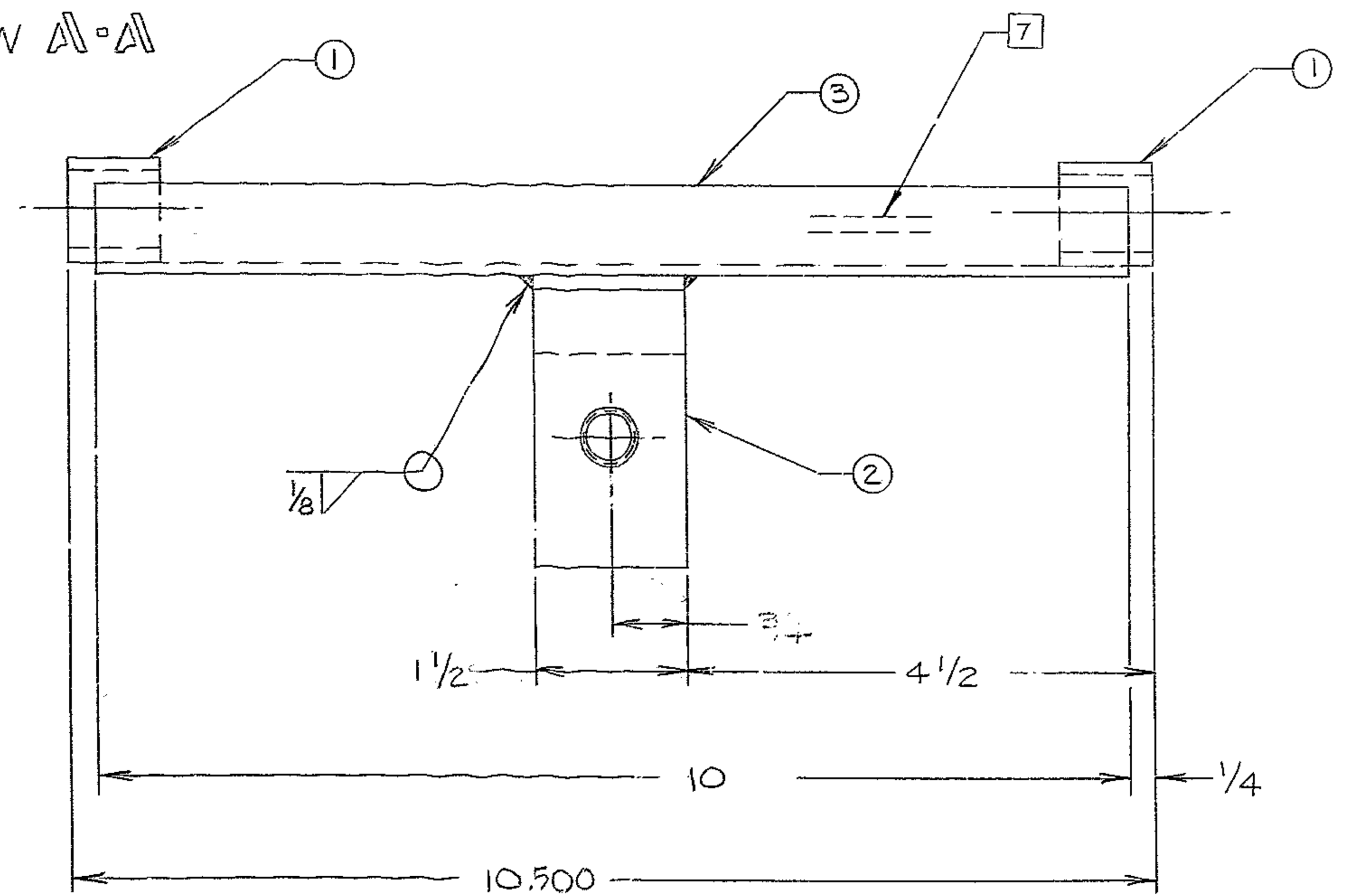


VIEW A-A



REVISIONS				
ZONE	LTR	DESCRIPTION	DATE	APPROVED
D5	A	ITEM 3 ADDED, 7/8 REF WAS 7/8, 3/8 DIM ADDED	11-4-68	
D4	A	ITEM 1 ADDED	"	
C5	A	NOTE 7 ADDED	"	
C2	A	PC NO. 1; 1" SQ X 1 3/4 LG. WAS 1" X 1 3/4 X 1" LG	"	
C1	A	PC NO. 2; 6063-T5 WAS 6061-T651 OR EQUIV	"	
C2	A	PC NO. 3; .563 X 10" LG ADDED	"	
B1	A	NOTE 3; APP T1 ADDED	"	
B2	A	NOTE 7; STAMP PART NO. WAS TAG PART NO.	"	
A		REVISED PER AURA APPD PRINT	"	
7C	B	DELETED 7/8 DIM, ADDED 1 1/8, CHANGED 5/8 TO 3/8	11-22-69	

MATERIAL LIST				
PC NO	QTY	DESCRIPTION	MATL & SPEC	ROUGH WT
1	2	RECT BAR 1" SQ X 1 3/4 LONG	AL ALLOY 6063-T5	.3
2	1	PL 1 1/2 X 1 3/4 THK X 1 7/8	AL ALLOY 6063-T5	.3
3	1	CHAN 2 X 1 X 1/8 THK X .563 X 10" LG.	AL ALLOY 6063-T5	.4

- NOTES:
- ALL DIMENSIONS ARE IN INCHES
  - FABRICATION TOLERANCES EXCEPT AS NOTED
    - UP TO 10 INCHES 1/16
    - 10 TO 50 INCHES 1/8
  - WELD PER W.G.C. SPECIFICATION 752 APP T1.
  - STRESS RELIEVE AFTER WELDING & BEFORE MACHINING PER W.G.C. SPECIFICATION 510
  - FLAT BLACK ANODIZE ALL OVER
  - ALL SURFACES MARKED ✓ TO BE 250 ✓ EXCEPT AS NOTED
  - STAMP WITH PART NO. 2150.283D604
  - ALL DIMENSIONS APPLY BEFORE ANODIZING

REF 1176

NEXT ASSY 2150.283E602 (W.G.N 102,988)

WESTERN GEAR CORPORATION  
CONSTRUCTION PROJECTS  
DEPARTMENT  
APPROVED FOR  
PROCUREMENT  
DATE 11/21/68

FIND NO.	PART NO.	DESCRIPTION	QTY	MATERIAL	CODE IDENT
LIMITS ON MACHINED DIMENSIONS EXCEPT AS NOTED					
ANGULAR = ± 1° 0'					
LINEAR:					
X = ± .1    .XXX = ± .010					
XX = ± .03    FRACTIONAL = ± 1/32					
BREAK ALL SHARP EDGES					
MATERIAL					
SEE LIST MATL					
W.G.E 107,679					
APPROVED					
LIST OF MATERIAL (LM)					
150IN STELLAR TELESCOPE MTG		Western GEAR CORPORATION HEAVY MACHINERY DIVISION EVERETT, WASHINGTON			
DRAWN: IRKEN DAHL 3-18-68		SUPPORT, YOKE, CELL COVER			
CHECK: J. McLaughlin 5-18-68		COUDE #3 ASSY			
ENGR		SIZE CODE IDENT NO. REV			
		D 16603 2150.283D604 B			
		SCALE 1/1 WT 3.7 LB SHEET 1 OF 1			