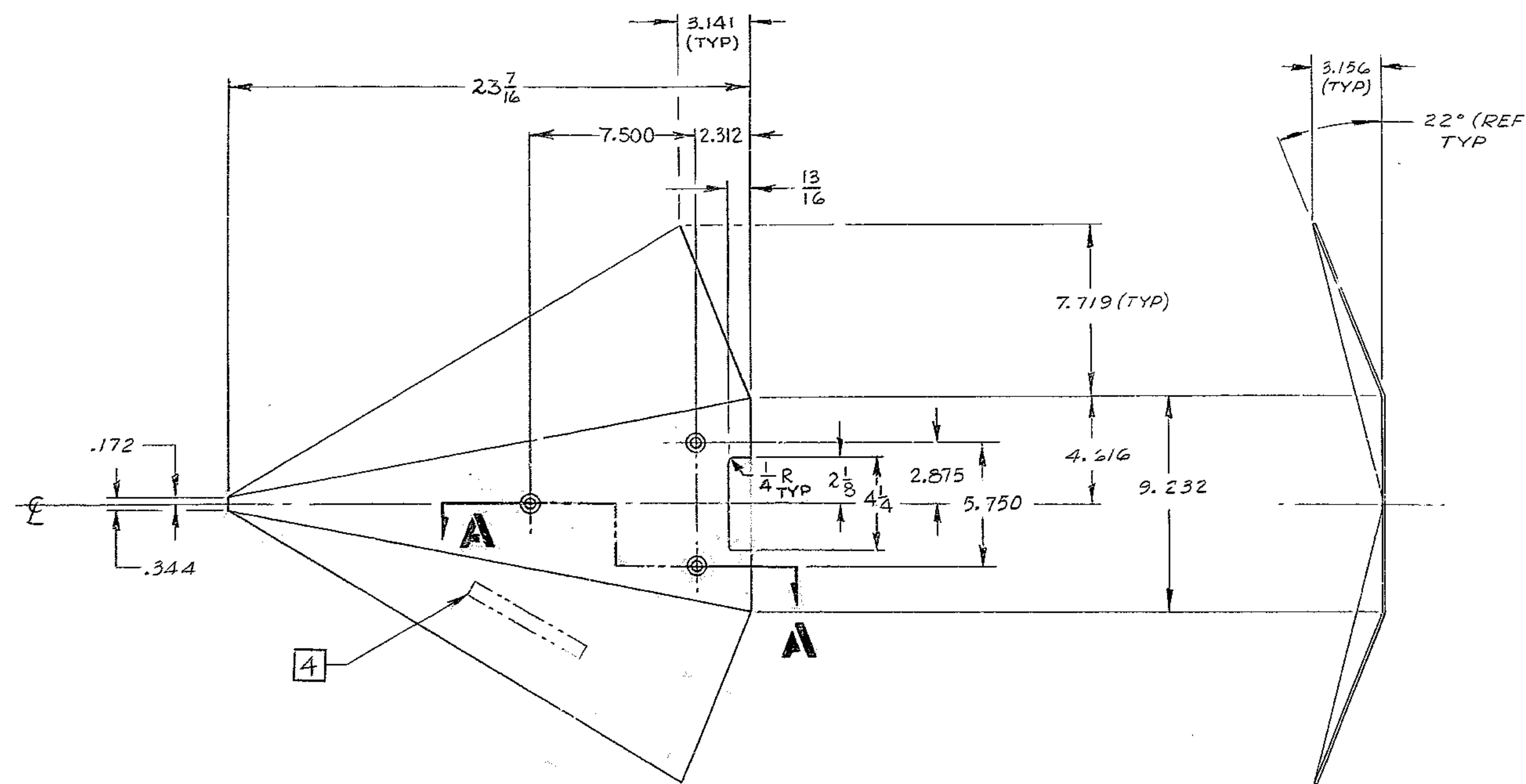
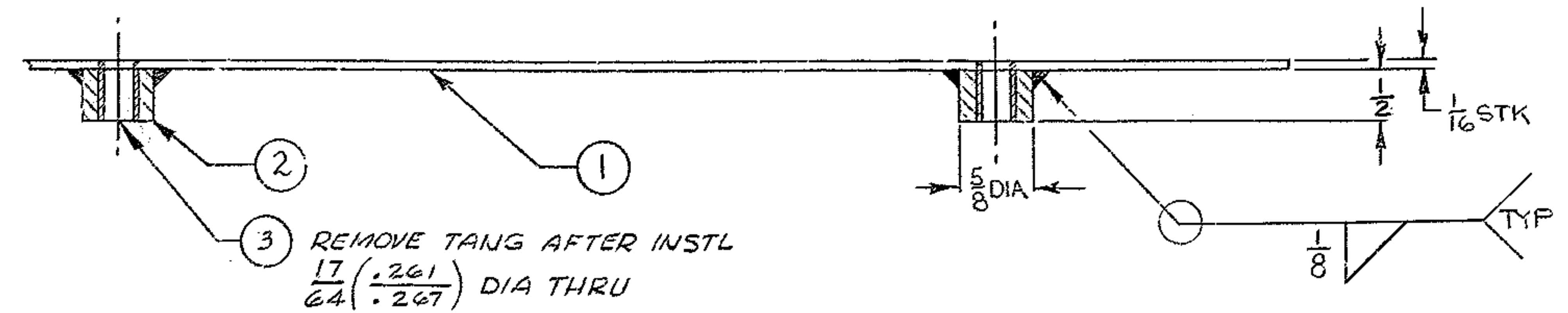


REVISIONS				
ZONE	LTR	DESCRIPTION	DATE	APPROVED
A5	A	1/8 WELD WAS 1/4	11-2-68	
C1	A	PC NO'S 1 & 2, AL ALY 6061-T6 WAS AL ALY 6061-T651	"	
	A	REVISED PC NO'S APPD PRINT	"	



MATERIAL LIST				
PC.NO.	QTY	DESCRIPTION	MAT L SPEC	ROUGH WT
1	1	SH 23 7/16 x 1/16 x 27	AL ALY 6061-T6	
2	3	ROD 5/8 DIA. x 1/2	AL ALY 6061-T6	
3	3	HELI-COIL INSERT 1/4-20 UNC-2B x 1/2 LG	HELI-COIL CORP, PART No. 1185-4CN0500	

- NOTES:
- ALL DIMENSIONS ARE IN INCHES
 - WELD PER WGC SPECIFICATION 752.
 - FLAT BLACK ANODIZE ALL OVER BEFORE INSTALLING INSERTS PC NO.3
 - METAL STAMP PT. NO. 2150.283D505 APPROX AS SHOWN.



REMOVE TANG AFTER INSTL
 $\frac{17}{64} (.261)$ DIA THRU
 $\frac{30}{33}$ DIA x 120° FAR SIDE
 TAP THRU USING HELI-COIL TAP #ACPAH3
 3 PLACES

SECTION A-A
 SCALE: 1/1

WESTERN GEAR CORPORATION
 CONSTRUCTION PRODUCTS
 DIVISION
 APPROVED FOR
 PROCUREMENT
 DATE 11/21/68

NEXT ASSY 2150.283E502 (WGN102974)

REV 1176

FIND NO.	PART NO.	DESCRIPTION	QTY	MATERIAL	CODE IDENT
LIST OF MATERIAL (LM)					
LIMITS ON MACHINED DIMENSIONS EXCEPT AS NOTED ANGULAR = ± 1° 0' LINEAR: X = ± .1 .XXX = ± .010 XX = ± .03 FRACTIONAL = ± 1/32		150 th STELLAR TELESCOPE MOUNTING		western GEAR CORPORATION	HEAVY MACHINERY DIVISION EVERETT, WASHINGTON
DRAWN G. COSTA CHECK <i>G. Costa</i> 5-21-68 ENGR		DOOR LEAF CENTRAL DUST COVER COUDE #3			
SEE MATL. LIST		WGE107693	SIZE	CODE IDENT NO.	REV
APPROVED			D	16603	2150.283D505
		SCALE 1/4	WT	LB	SHEET 1 OF 1