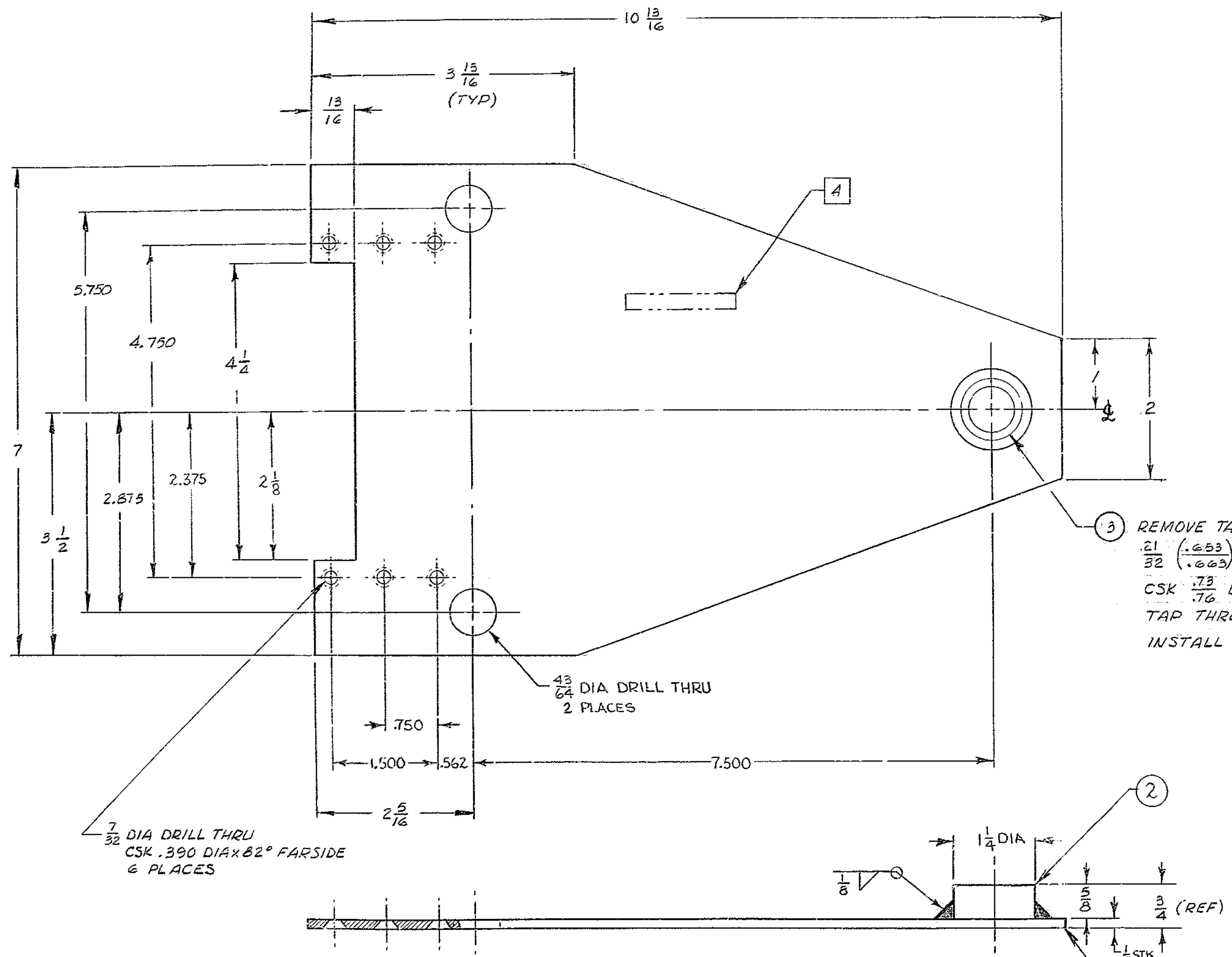


REVISIONS				
ZONE	LTR	DESCRIPTION	DATE	APPROVED
C1	A	PC NOS 1&2; AL ALY 6061-T6 WAS AL ALY 6061-T561	11-2-68	
C8	A	5.750 DIM WAS 5.34	"	
	A	REVISED PER RUER APP PRINT	"	
C1	B	P/N 3 WAS NO. 1185-10CNO625 ADDED "OR EQ." TO P/N 3	7/15/71	JW



MATERIAL LIST				
PC. NO.	QTY	DESCRIPTION	MAT L & SPEC	ROUGH WT
1	1	SHT 7x 1/8 x 10 13/16	AL. ALY 6061-T6	.8
2	1	ROD 1/4 DIA x 5/8	AL ALY 6061-T6	.1
3	1	HELI-COIL INSERT 5/8-11UNC-2B x 5/8 LG	HELI-COIL CORP OR EQ. PART No 3585-10CNO625	-

- NOTES
- ALL DIMENSIONS ARE IN INCHES
 - WELD PER WGC SPECIFICATION 752.
 - FLAT BLACK ANODIZE ALL OVER BEFORE INSTALLING INSERTS PC. NO. 3.
- 4 METAL STAMP PART No. 2150.283D504 APPROX AS SHOWN.

WESTERN GEAR CORPORATION
CONSTRUCTION PROJECTS
DEPARTMENT
APPROVED FOR
PROCUREMENT
DATE 11/21/68

NEXT ASS'Y 2150.283E502(WGN102974)

FIND NO.	PART NO.	DESCRIPTION	QTY	MATERIAL	CODE IDENT
LIMITS ON MACHINED DIMENSIONS EXCEPT AS NOTED ANGULAR = ± 1° 0' LINEAR: X = ± .1 .XXX = ± .010 XX = ± .03 FRACTIONAL = ± 1/32					
DRAWN COSTA		150 STELLAR TELESCOPE MOUNTING			
CHECK <i>[Signature]</i> 520-68		WESTERN GEAR CORPORATION HEAVY MACHINERY DIVISION EVERETT, WASHINGTON			
MATERIAL		STRONGBACK CENTRAL DUST COVER COUDE #3			
SEE MATL LIST		WGE 107654		SIZE CODE IDENT NO. D 16603	REV B
APPROVED				SCALE 1/1	WT .9 LB SHEET 1 OF 1

REF FILE 1176