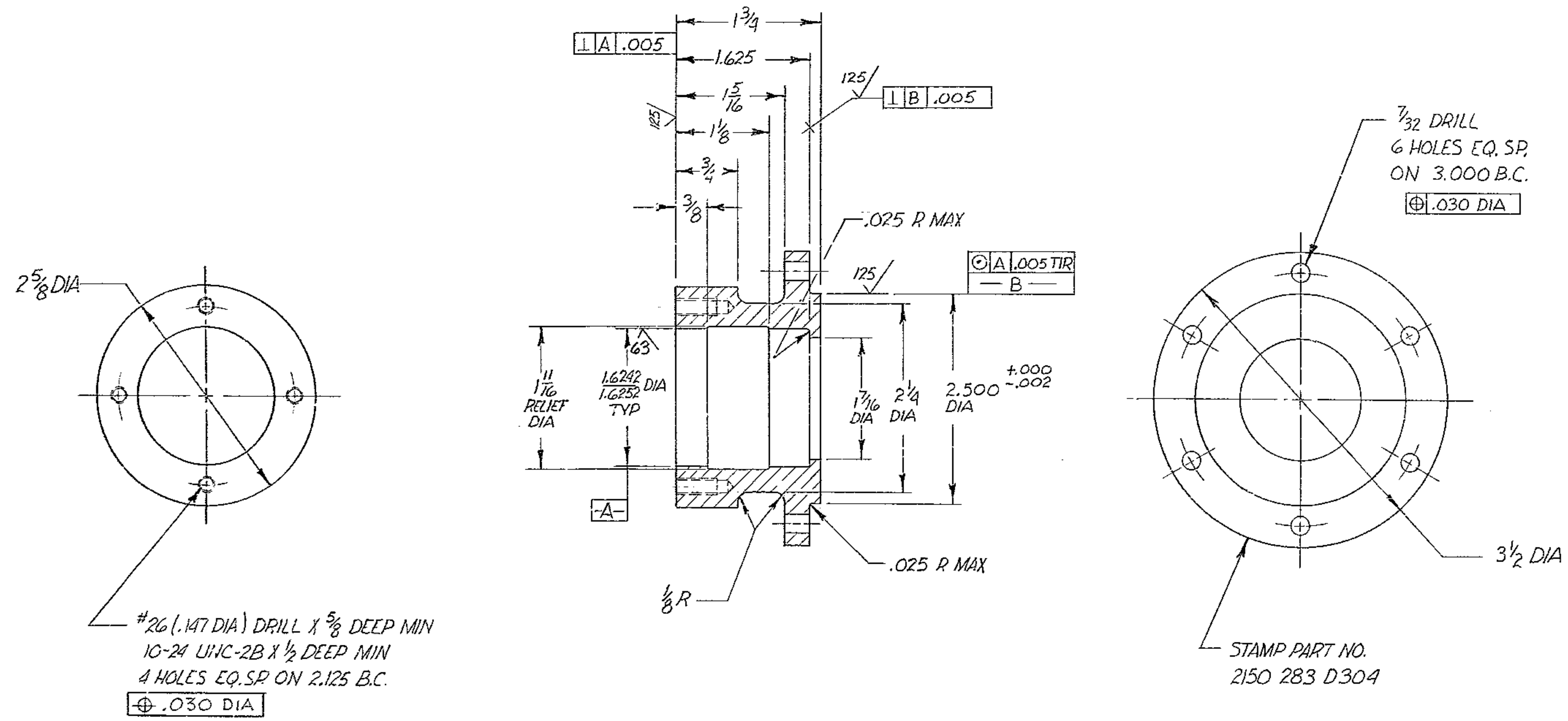


REVISIONS				
ZONE	LTR	DESCRIPTION	DATE	APPROVED
	A	REVISED PER AWRP PAPP PRINT	11-14-68	



NOTES:
 1. ALL DIMENSIONS ARE IN INCHES
 2. FINISH R_{50} ALL OVER EXCEPT AS NOTED
 3. STAMP PART NO. 2150 283 D304

REF. FILE 1176

NEXT ASSY 2150.283 D302 (WGE 107,675)

WESTERN GEAR CORPORATION
 CONSTRUCTION PROJECTS
 DEPARTMENT
 APPROVED FOR
 PROCUREMENT
 P.G. DATE 11-29-68

FIND NO.	PART NO.	DESCRIPTION	QTY	MATERIAL	CODE IDENT
LIST OF MATERIAL (LM)					
LIMITS ON MACHINED DIMENSIONS EXCEPT AS NOTED ANGULAR = ± 1° 0'		150 INCH STELLAR TELESCOPE MOUNTING		HEAVY MACHINERY DIVISION EVERETT, WASHINGTON	
LINEAR: X = ± .1 .XXX = ± .010 XX = ± .03 FRACTIONAL = ± 1/32		DRAWN D. THOMPSON CHECK			
BREAK ALL SHARP EDGES		ENGR		SUPPORT, BEARING- ROTATIONAL DRIVE COUDE #3 ASSY	
MATERIAL					
STL AISI C1018 3 1/2 DIA X 1 1/8 LG.		WGE 107,678 APPROVED		SIZE CODE IDENT NO. D 16603	2150.283 D304 REV A
SCALE 1/1		WT 3		LB SHEET 1 OF 1	