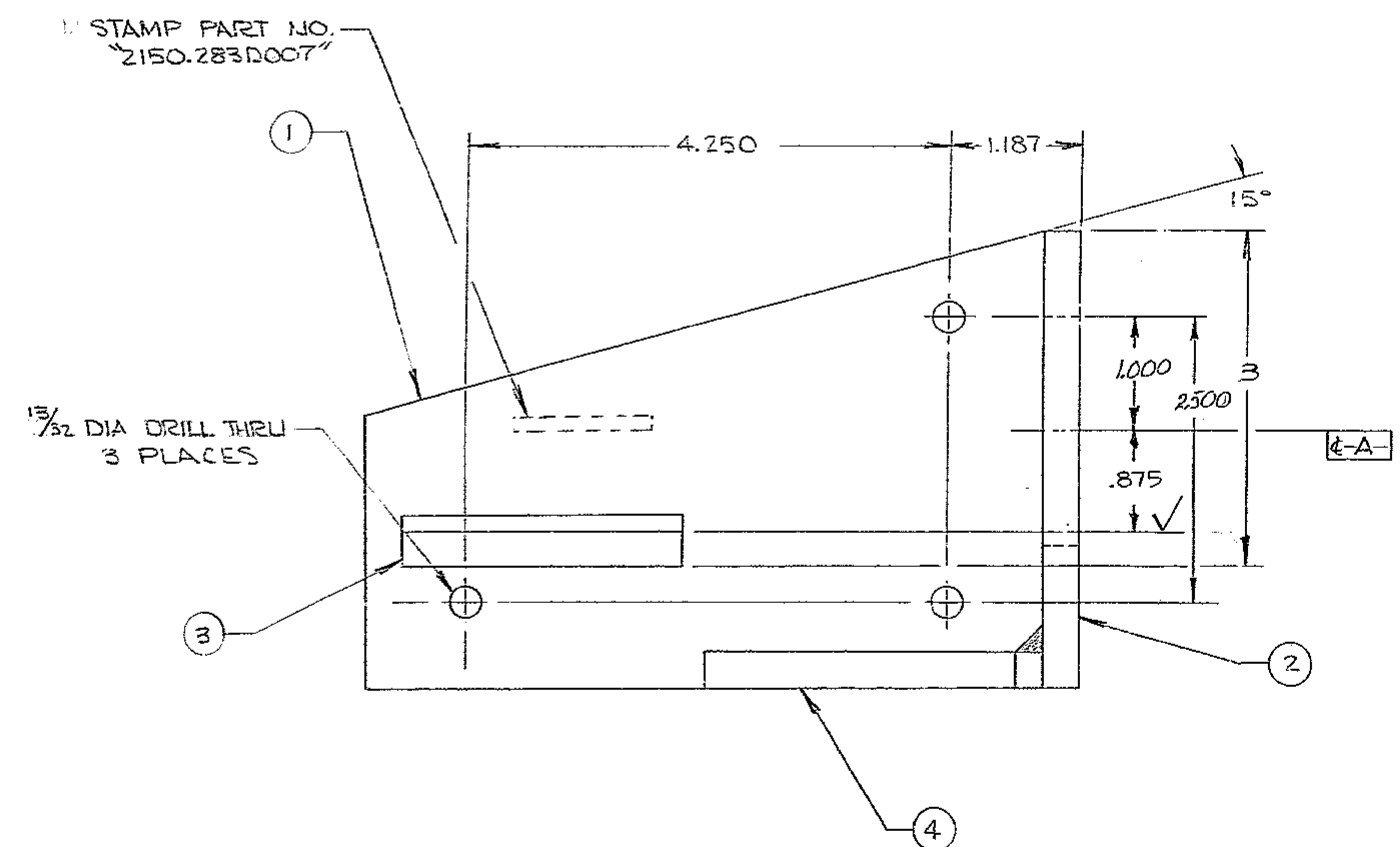
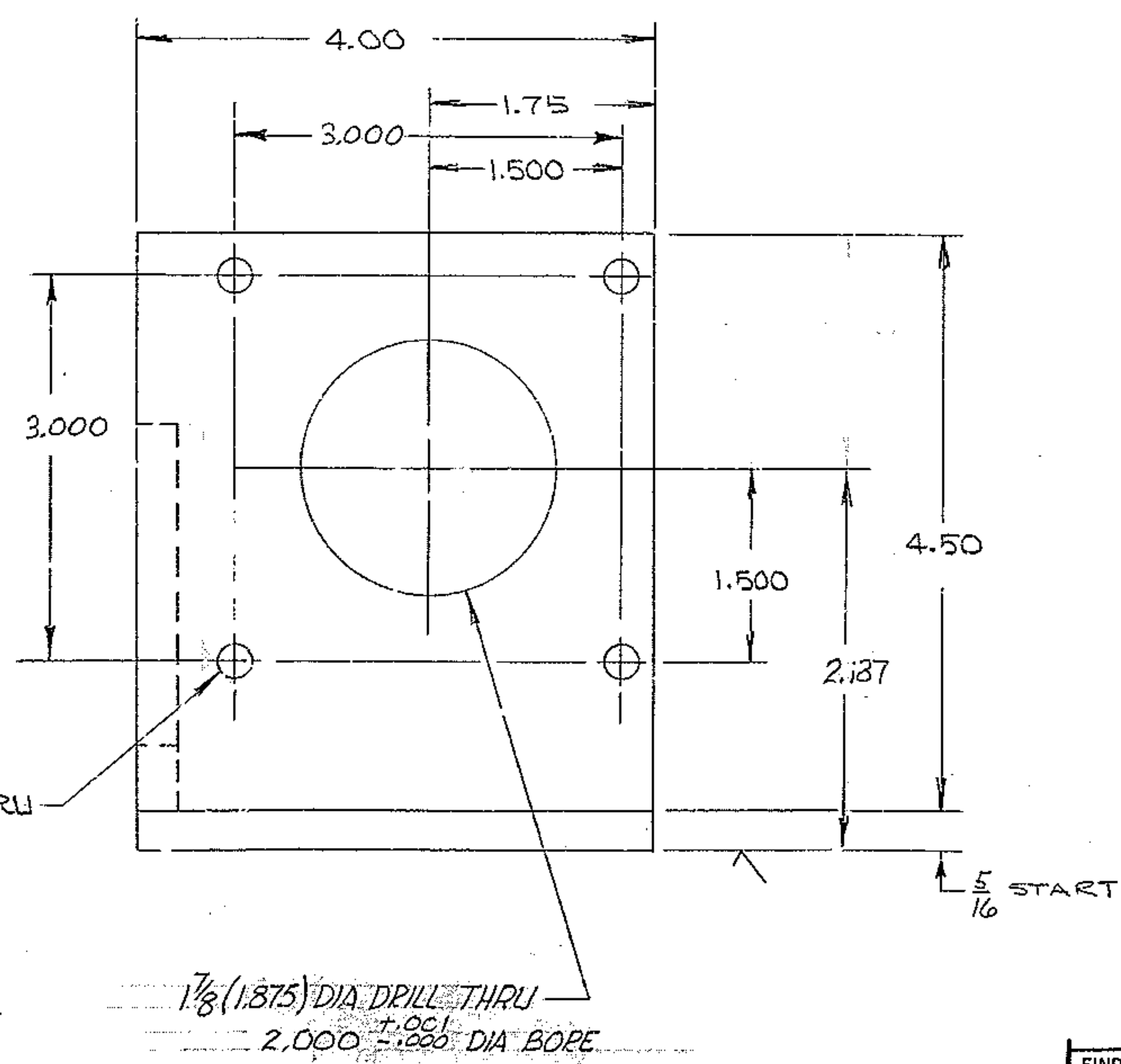
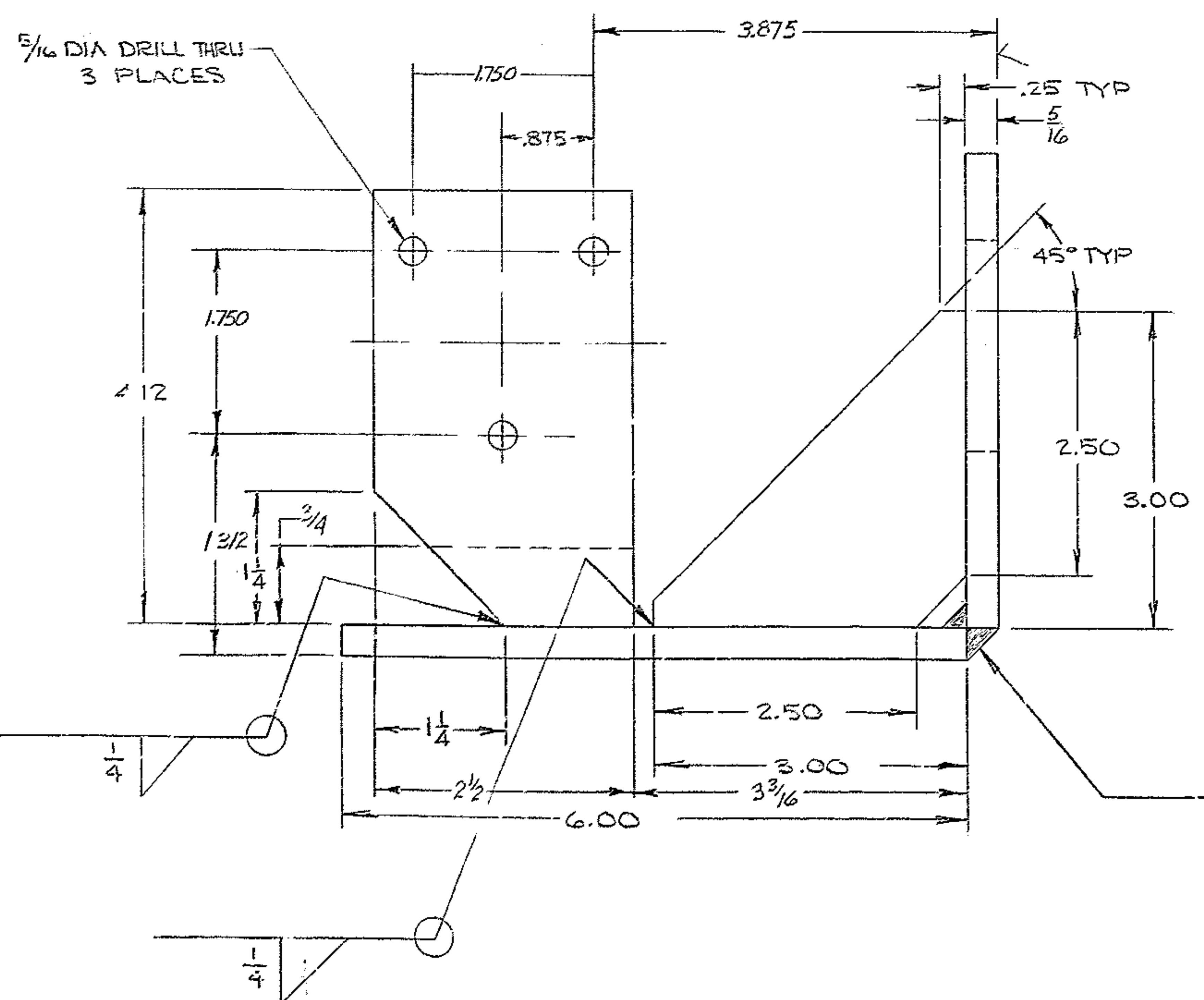


REVISIONS				
ZONE	LTR	DESCRIPTION	DATE	APPROVED
	A	REVISED PER ALBA APPD PRINT	11-6-68	
B6	A	5/16 DIM ADDED	"	
B2	A	NOTE 5 ADDED	"	
B4	A	NOTE NO 4; S10 SPEC WAS S11	"	
B7	B	ADDED 1 1/4 CHAMFER	7/15/11	JW
C6	B	3 WAS 2 5/16, .875 WAS .500		



MATERIAL LIST				
PC NO	QTY	DESCRIPTION	MATL & SPEC	ROUGH WT
1	1	R 4 x 7/16 x 6	STL ASTM A-36	
2	1	R 4 x 7/16 x 4 1/2		
3	1	R 2 1/2 x 7/16 x 4 1/8		
4	1	R 3 x 5/16 x 3	STL ASTM A-36	



- NOTES:
1. ALL DIMENSIONS ARE IN INCHES
  2. FABRICATION TOLERANCES, EXCEPT AS NOTED.
    - a. UP TO 10 INCHES 1/16
    - b. 10 TO 50 INCHES 1/8
    - c. 50 INCHES & OVER 1/4
  3. WELD PER W.G.C. SPECIFICATION 752. APPTI
  4. STRESS RELIEVE AFTER WELDING & BEFORE MACHINING PER W.G.C. SPECIFICATION 510. IMMEDIATELY AFTER STRESS RELIEVING & CLEANING
  5. APPLY ONE COAT OF PRIME PAINT PER WGC SPEC 511

WESTERN GEAR CORPORATION  
 CONSTRUCTION PROJECTS  
 DEPARTMENT  
 APPROVED FOR  
 PROCUREMENT  
 DG DATE 11/21/68

NEXT ASSY 2150.283E002 (WGN102989)

FIND NO.	PART NO.	DESCRIPTION	QTY	MATERIAL	CODE IDENT
LIST OF MATERIAL (LM)					
LIMITS ON MACHINED DIMENSIONS EXCEPT AS NOTED		150 <sup>th</sup> STELLAR			
ANGULAR = ± 1° 0'		TELESCOPE MOUNTING			
LINEAR:		DRAWN FLAVIN 3-14-68			
X = ± .1 XXX = ± .010		CHECK 11/10/68 5/17-68			
XX = ± .03 FRACTIONAL = ± 1/32		ENGR			
BREAK ALL SHARP EDGES		MATERIAL			
SEE MATL LIST		WGE.107672			
APPROVED		SIZE CODE IDENT NO.			
		D 16603 2150.283D007 B			
		SCALE 1/1 WT LB SHEET 1 OF 1			

1176

WESTERN GEAR CORPORATION  
 HEAVY MACHINERY DIVISION  
 EVERETT, WASHINGTON  
 MOUNT, DRIVE, CENTRAL DUST COVER  
 COUDE # 3 ASSY