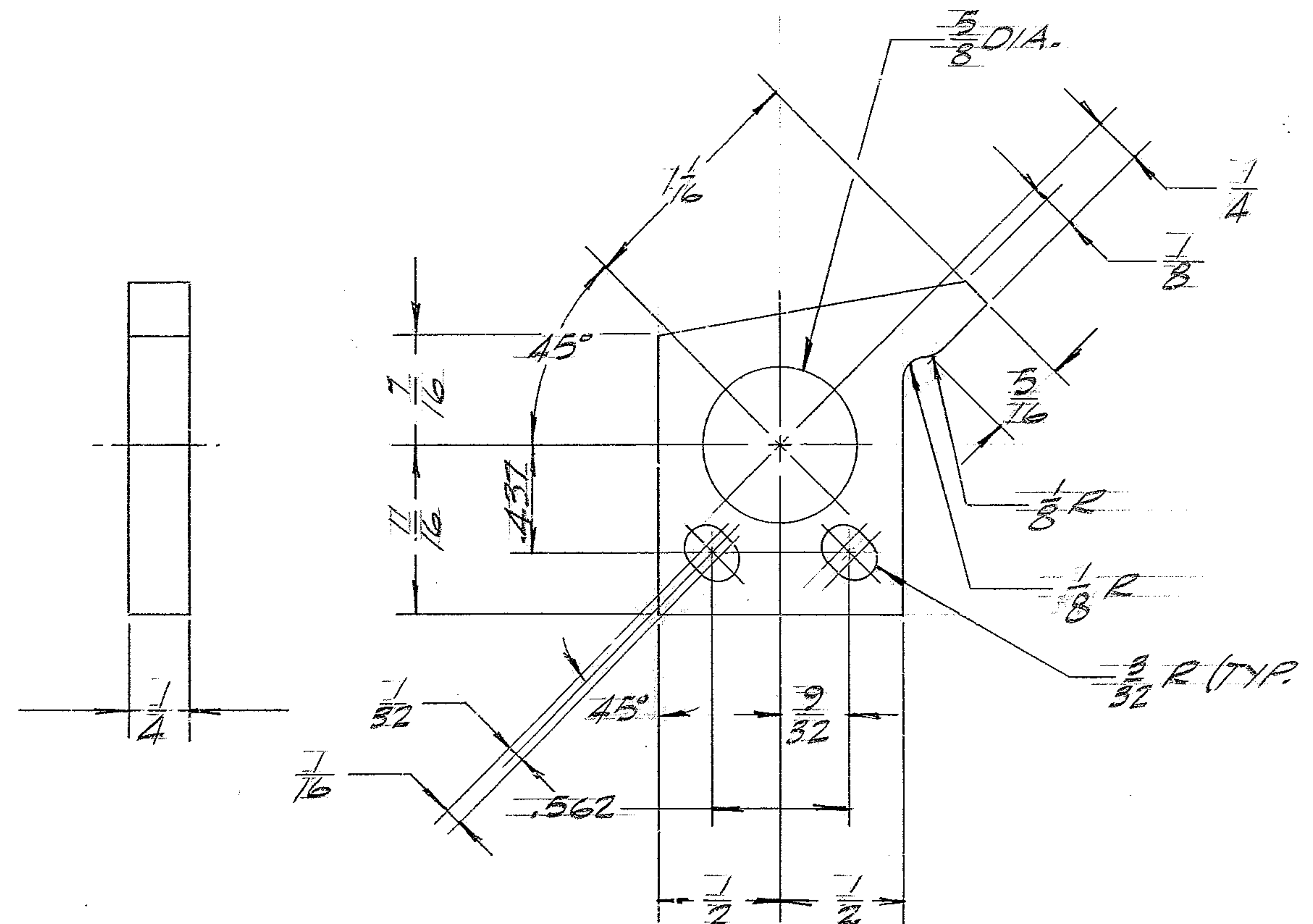


REVISIONS				
ZONE	LTR	DESCRIPTION	DATE	APPROVED
	A	RELEASED FOR CONST.	11/18/63	
	B	DWG. NO WAS 2150.283C516	5/29/62	FC



- NOTES:
1. ALL DIMENSIONS ARE IN INCHES
 2. ALL SURFACES TO BE #25
 3. STAMP WITH PART NO. 2150.283C517
 4. FLAT BLACK ANODIZE ALL OVER
 5. DIMENSIONS APPLY BEFORE ANODIZING.

REF. FILE 1176

NEXT ASS'Y: 2150.283E502 (W.G.N 102,974)

WESTERN GEAR CORPORATION
 CONSTRUCTION PROJECTS
 DEPARTMENT
 APPROVED FOR
 PROCUREMENT
 P.G. DATE 11/21/63

FIND NO.	PART NO.	DESCRIPTION	QTY	MATERIAL	CODE IDENT
LIST OF MATERIAL (LM)					
LIMITS ON MACHINED DIMENSIONS EXCEPT AS NOTED ANGULAR = ± 1° 0'		150 IN. STELLAR TELESCOPE MTG.		WESTERN GEAR CORPORATION HEAVY MACHINERY DIVISION EVERETT, WASHINGTON	
LINEAR: X = ± .1 .XXX = ± .010 XX = ± .03 FRACTIONAL = ± 1/32		DRAWN R. NIEVES 11/17/63 CHECK R. GRIFFITHS 11/12/63		ACTIVATOR - L.S. - CLOSED CENTRAL DUST COVER COUDE #3	
BREAK ALL SHARP EDGES		ENGR			
MATERIAL AL. ALLOY 6061-T651 R 1/2 x 5/16 x 1/2		W.G. D107663		SIZE C	CODE IDENT NO. 2150.283C517
APPROVED				REV B	
		SCALE 2:1		WT	LB SHEET 1 OF 1