

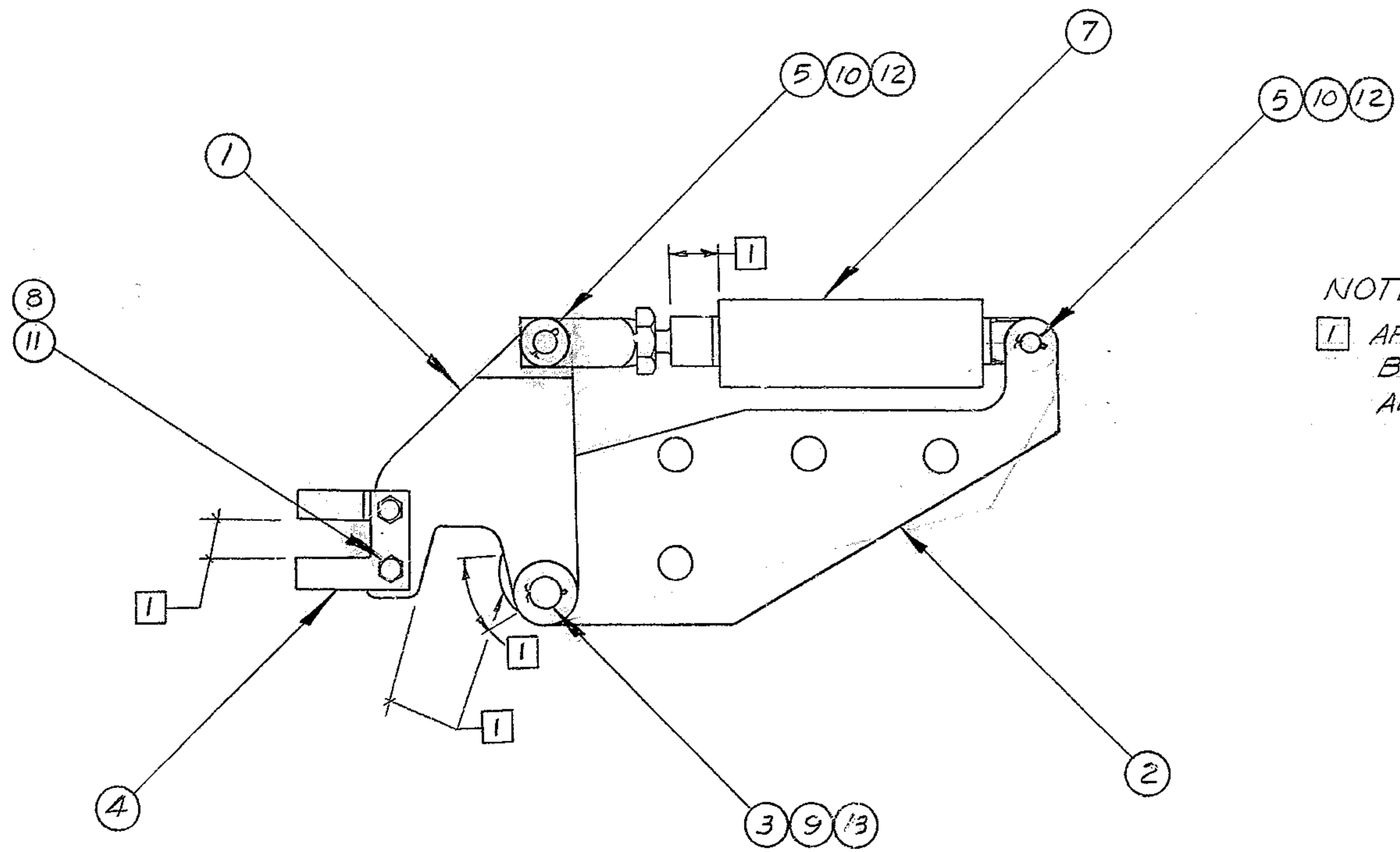
4

3

2

1

REVISIONS				
ZONE	LTR	DESCRIPTION	DATE	APPROVED
	A	REVISED PER AURA APPD PRINT	20 NOV 68	G.R.



NOTE
 1 APPLY 2 COATS OF PRIME PAINT & 2 COATS OF 3M S² BLACK VELVET FINISH PAINT PER W.G.C. SPEC NO. 511 ALL OVER EXCEPT WHERE NOTED 1

SEE B/M: 2150.283 A402 (W.G. C112951)
 NEXT ASSY: 2150.283 E102 (W.G.N 102987)

REF. FILE 1176

WESTERN GEAR CORPORATION
 CONSTRUCTION PROJECTS
 DEPARTMENT
 APPROVED FOR
 PROCUREMENT
 D.G. DATE 11/22/68

FIND NO.	PART NO.	DESCRIPTION	QTY	MATERIAL	CODE IDENT
LIST OF MATERIAL (LM)					
LIMITS ON MACHINED DIMENSIONS EXCEPT AS NOTED ANGULAR = ± 1° 0'		150 IN STELLAR TELESCOPE MOUNTING		HEAVY MACHINERY DIVISION EVERETT, WASHINGTON LOCK ASSEMBLY COUDÉ NO. 3	
LINEAR: X = ± .1 .XXX = ± .010 .XX = ± .03 FRACTIONAL = ± 1/32		DRAWN F COSTA 3-21-68 CHECK <i>F. Madley</i> 5-20-68 ENGR			
BREAK ALL SHARP EDGES		MATERIAL		W.G.D 107441	
		APPROVED		SIZE C	CODE IDENT NO. 16603
				SCALE 1/2	WT
				LB	SHEET / OF /
				2150.283C402 A	