

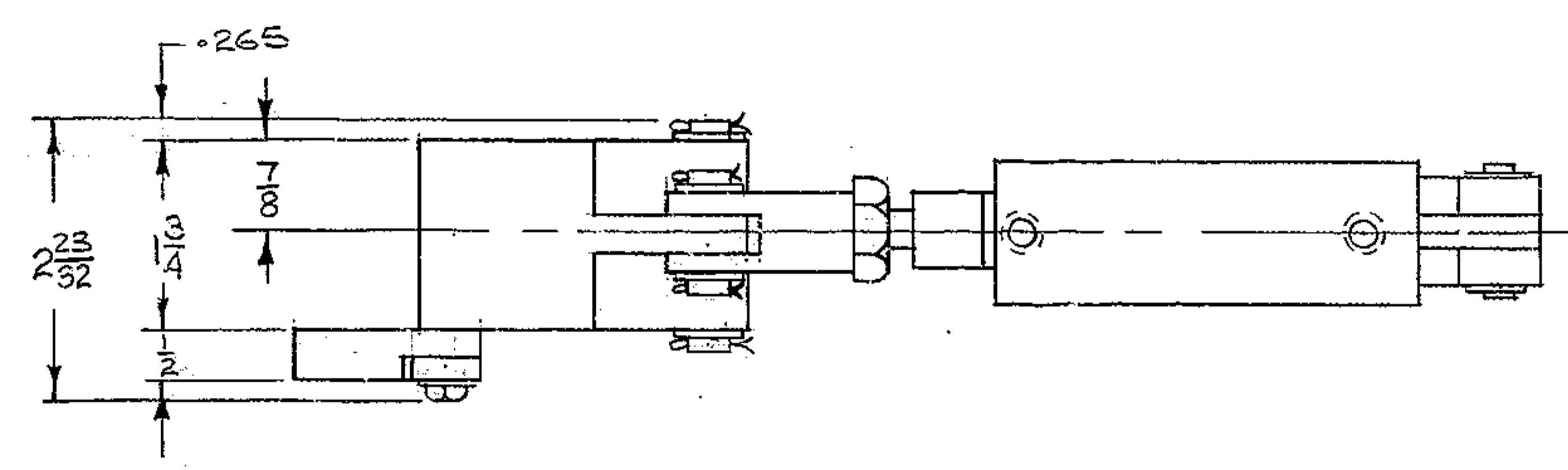
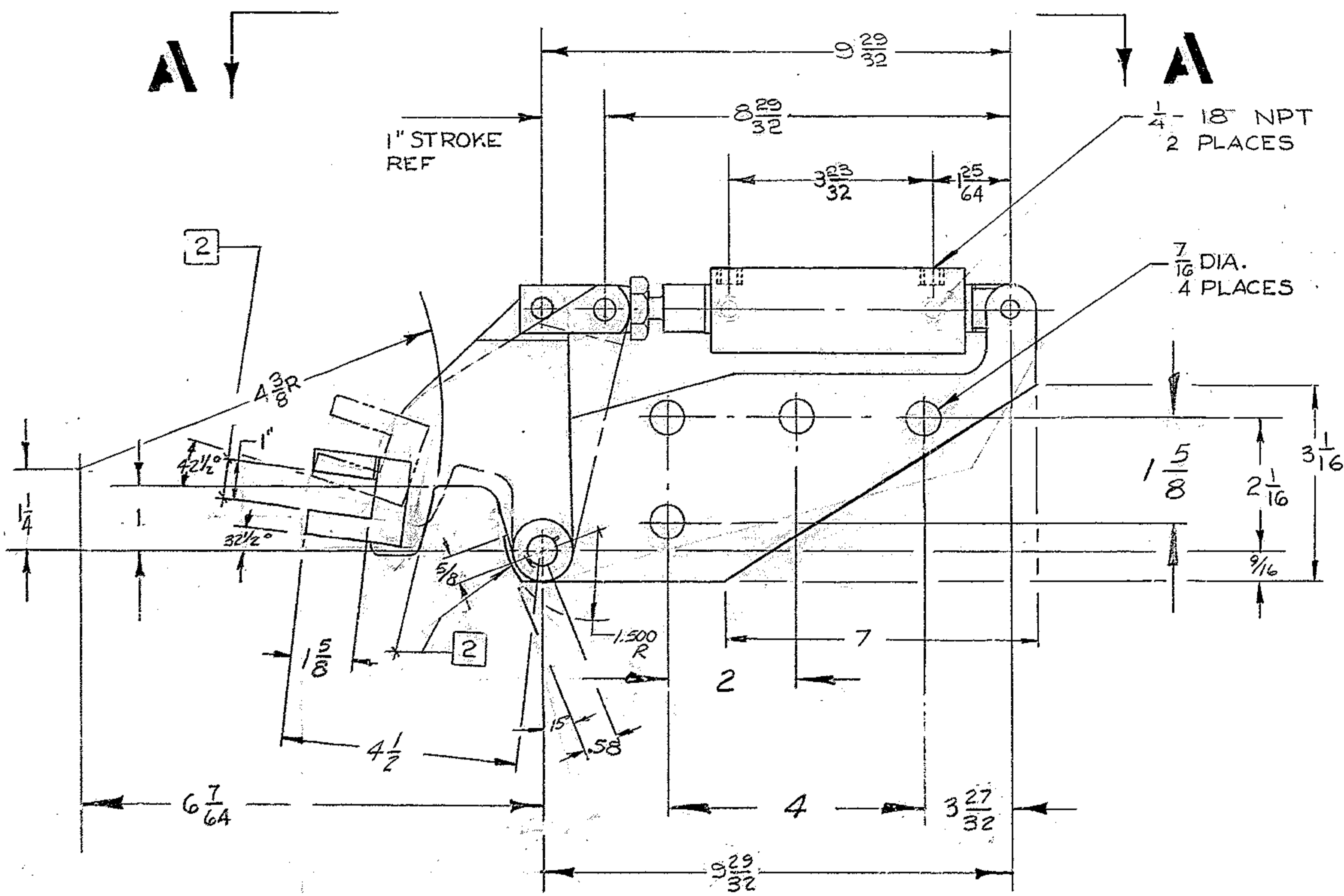
4

3

2

1

REVISIONS				
ZONE	LTR	DESCRIPTION	DATE	APPROVED
	A	REV. PER A.U.R.A. APP PRINT	10-29-68	
C3	A	9 ²⁹ / ₃₂ WAS 8 ¹¹ / ₃₂ 8 ²⁹ / ₃₂ WAS 7 ¹¹ / ₃₂ 3 ²³ / ₃₂ WAS 3 ⁵ / ₃₂		
"		1 ³⁵ / ₆₄ WAS 1 ⁷ / ₆₄ 1/4-18 NPT WAS 1/2-27 NPT		
B3	A	9 ¹⁹ / ₁₆ WAS 8 ³ / ₈ 2 ¹³ / ₁₆ WAS 2 ³ / ₈		
C2	A	2 ²³ / ₃₂ WAS 2 ¹⁹ / ₃₂ .265 WAS .193		
B4	A	1 DIM ADDED		



VIEW **A-A**

NOTE:-
 1. ALL DIMENSIONS IN INCHES.
 2. ALL SURFACES 3M CO² BLACK VELVET EXCEPT WHERE NOTED 2

REF. FILE 1176

NEXT ASSY: 2150 283E 101 (W.G.N 102896)

WESTERN GEAR CORPORATION
 CONSTRUCTION PROJECTS
 DEPARTMENT
 APPROVED FOR
 PROCUREMENT
 P.G. DATE 11/22/68

FABRICATION TOLERANCES
 EXCEPT AS NOTED
 UP TO 10 INCHES ± 1/16
 10 TO 50 INCHES ± 1/8
 50 INCHES & OVER ± 1/4

FIND NO.	PART NO.	DESCRIPTION	QTY	MATERIAL	CODE IDENT
LIST OF MATERIAL (LM)					
LIMITS ON MACHINED DIMENSIONS EXCEPT AS NOTED ANGULAR = ± 1° 0'		150 IN STELLAR TELESCOPE MOUNTING		WESTERN GEAR CORPORATION HEAVY MACHINERY DIVISION EVERETT, WASHINGTON OUTLINE LOCK ASSY COUDE NO. 3	
LINEAR: .X = ± .1 .XXX = ± .010 .XX = ± .03 FRACTIONAL = ± 1/32		DRAWN <i>COSTA</i> 3-20-68 CHECK <i>F. Nichols</i> 5-23-68 ENGR			
BREAK ALL SHARP EDGES		MATERIAL		SIZE CODE IDENT NO. REV C 16603 2150 283C401 A	
APPROVED		W.G.D 107440		SCALE NONE WT LB SHEET / OF /	