

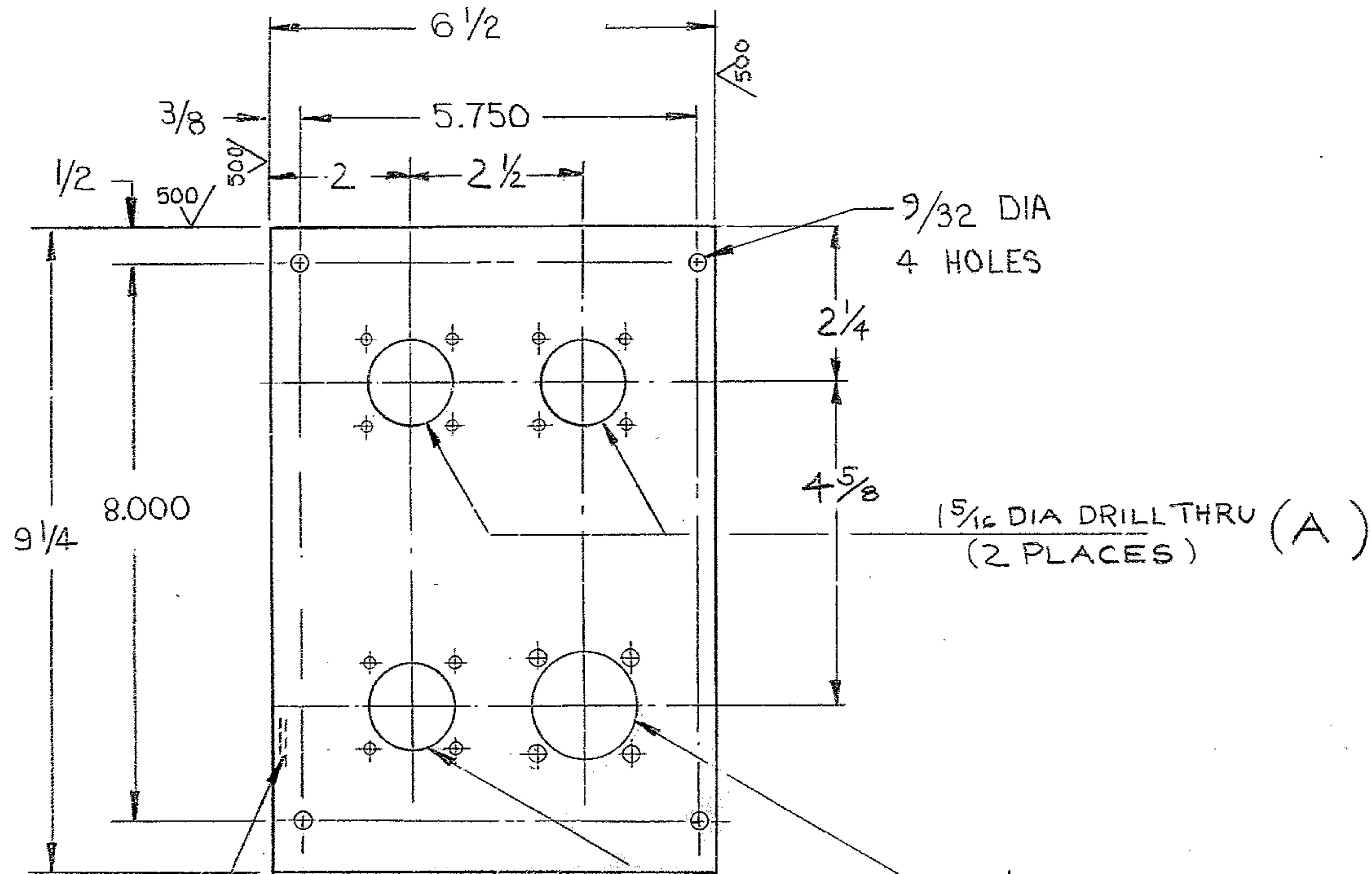
4

3

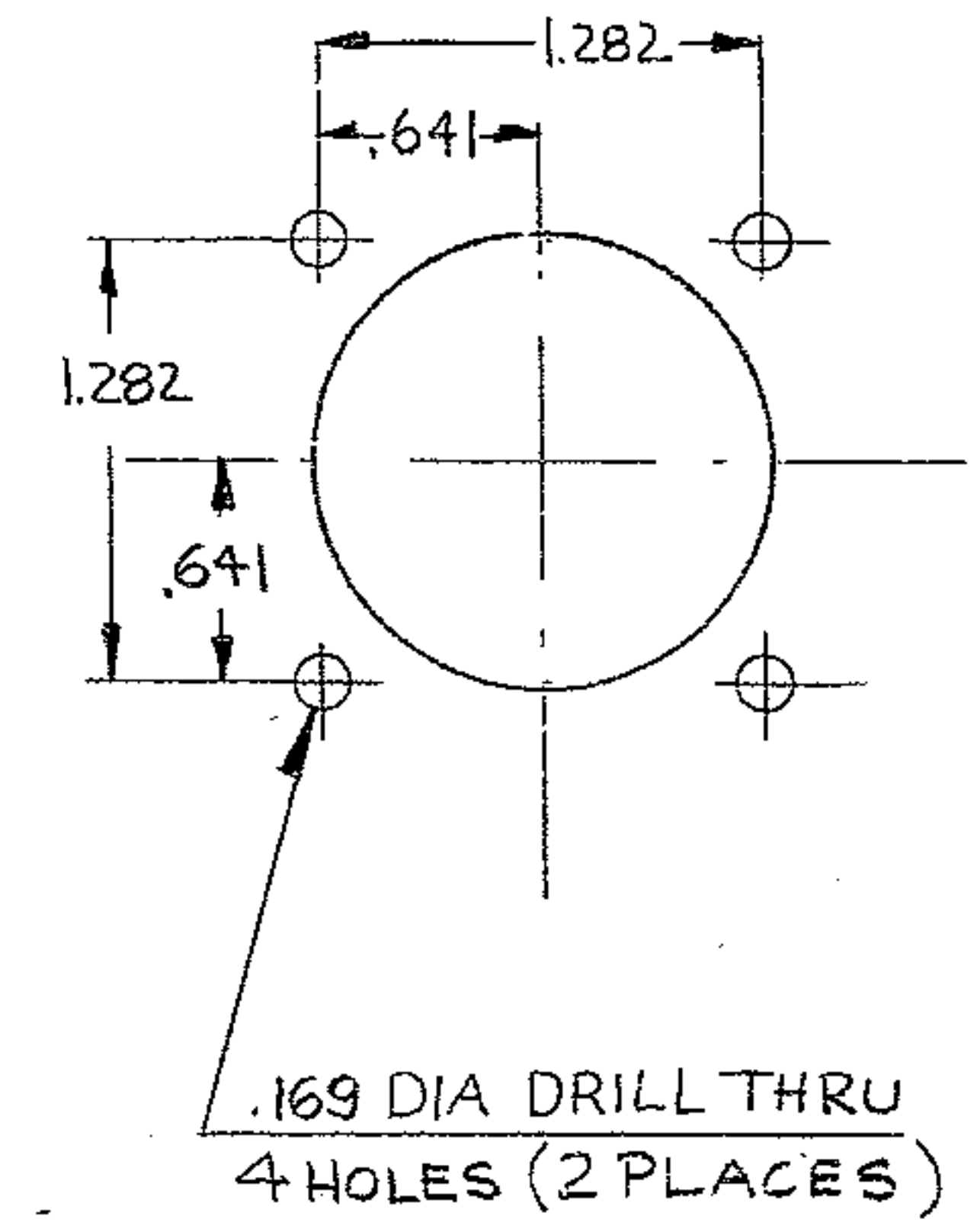
2

1

REVISIONS				
ZONE	LTR	DESCRIPTION	DATE	APPROVED
	A	RELEASED FOR MANUFACTURE	11/15/79	
	B	ADDED 4 HOLES FOR CONNETORS	3/6/89	PG



DETAIL: A (SCALE: 1/1)



NOTES:

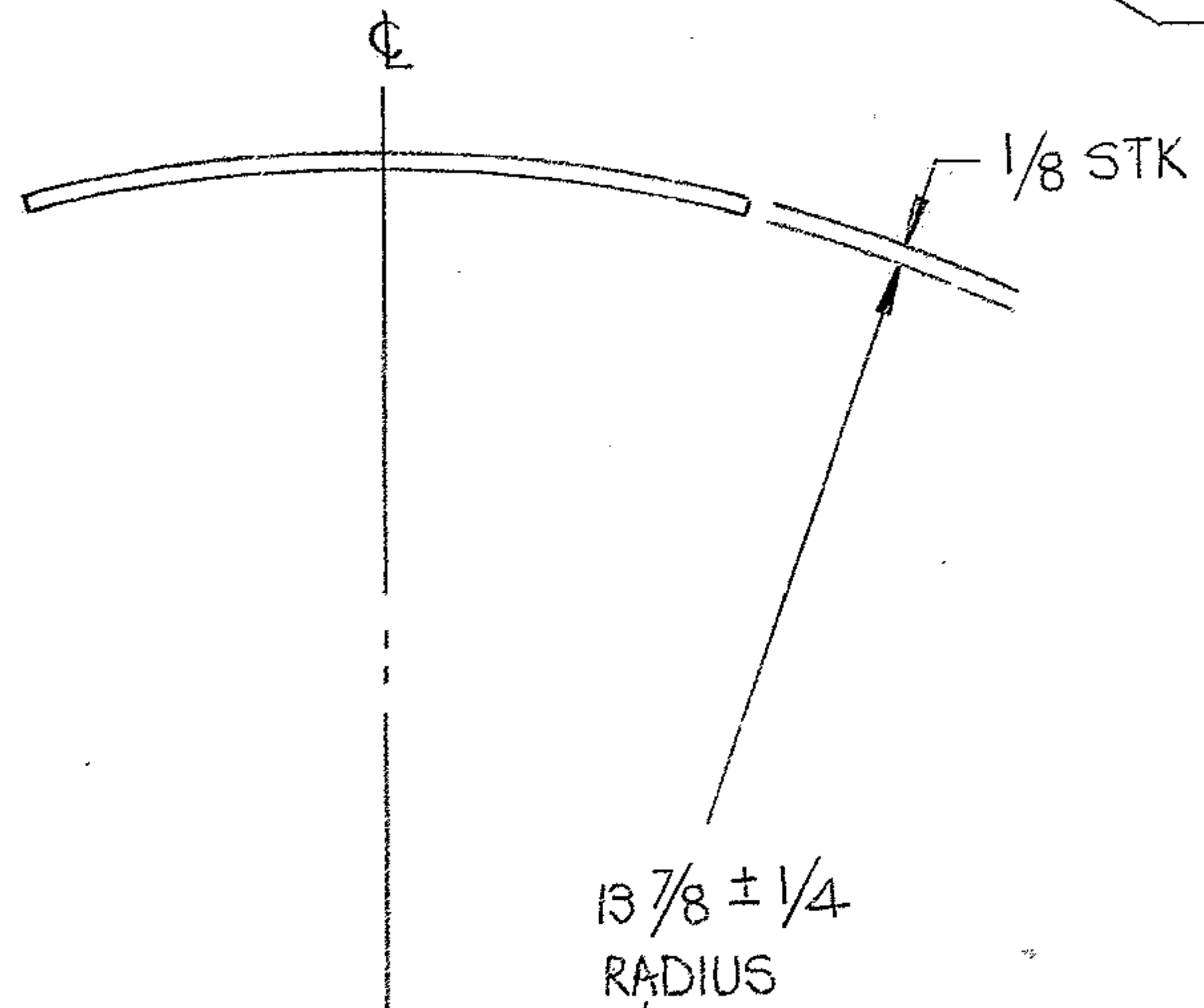
1. ALL DIMENSIONS ARE IN INCHES.

STAMP PART NO 2150.283 C115

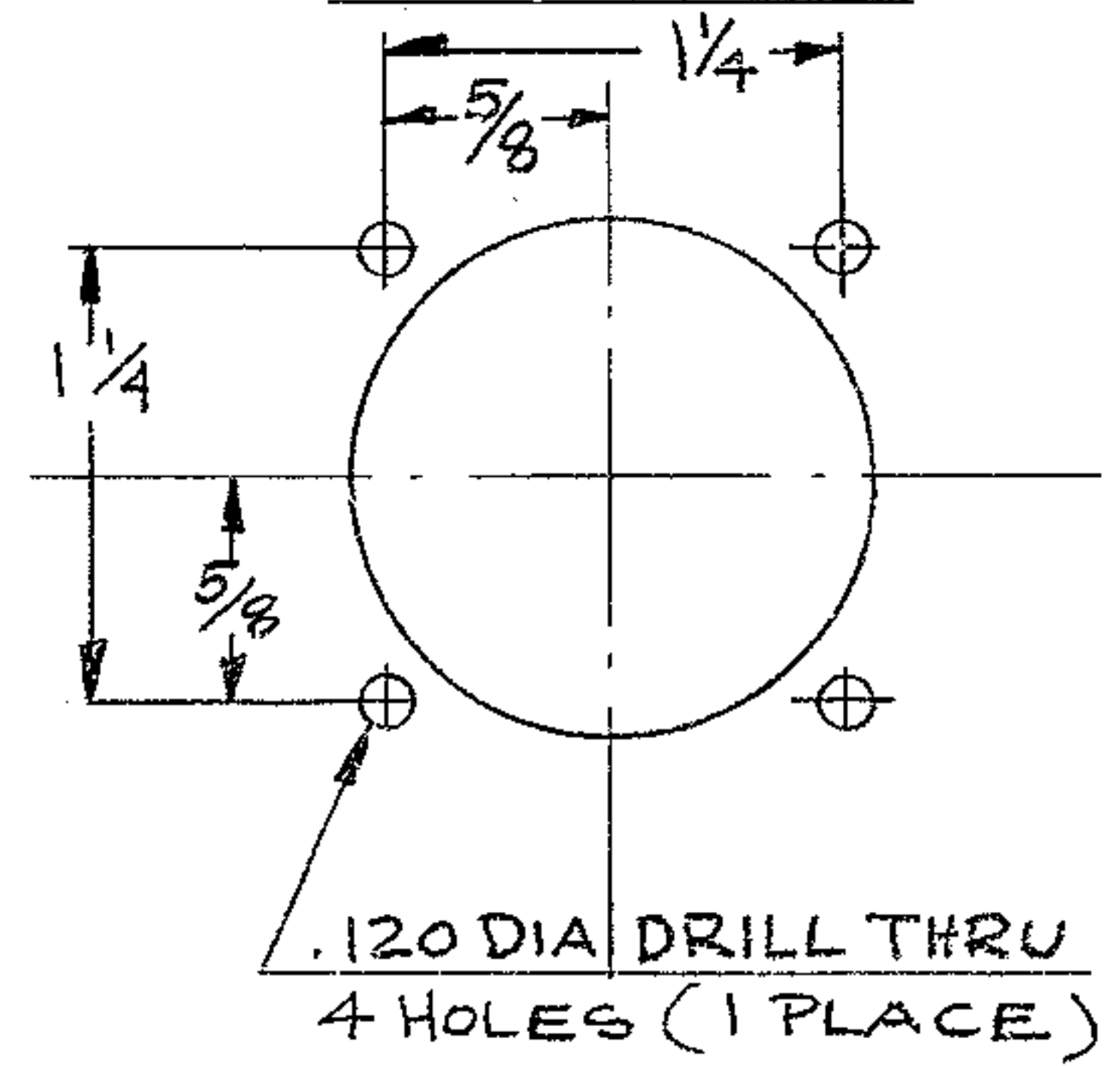
ALL DIMENSIONS IN THIS VIEW ARE BEFORE ROLLING.

1 1/2 DIA DRILL THRU (B) (1 PLACE)

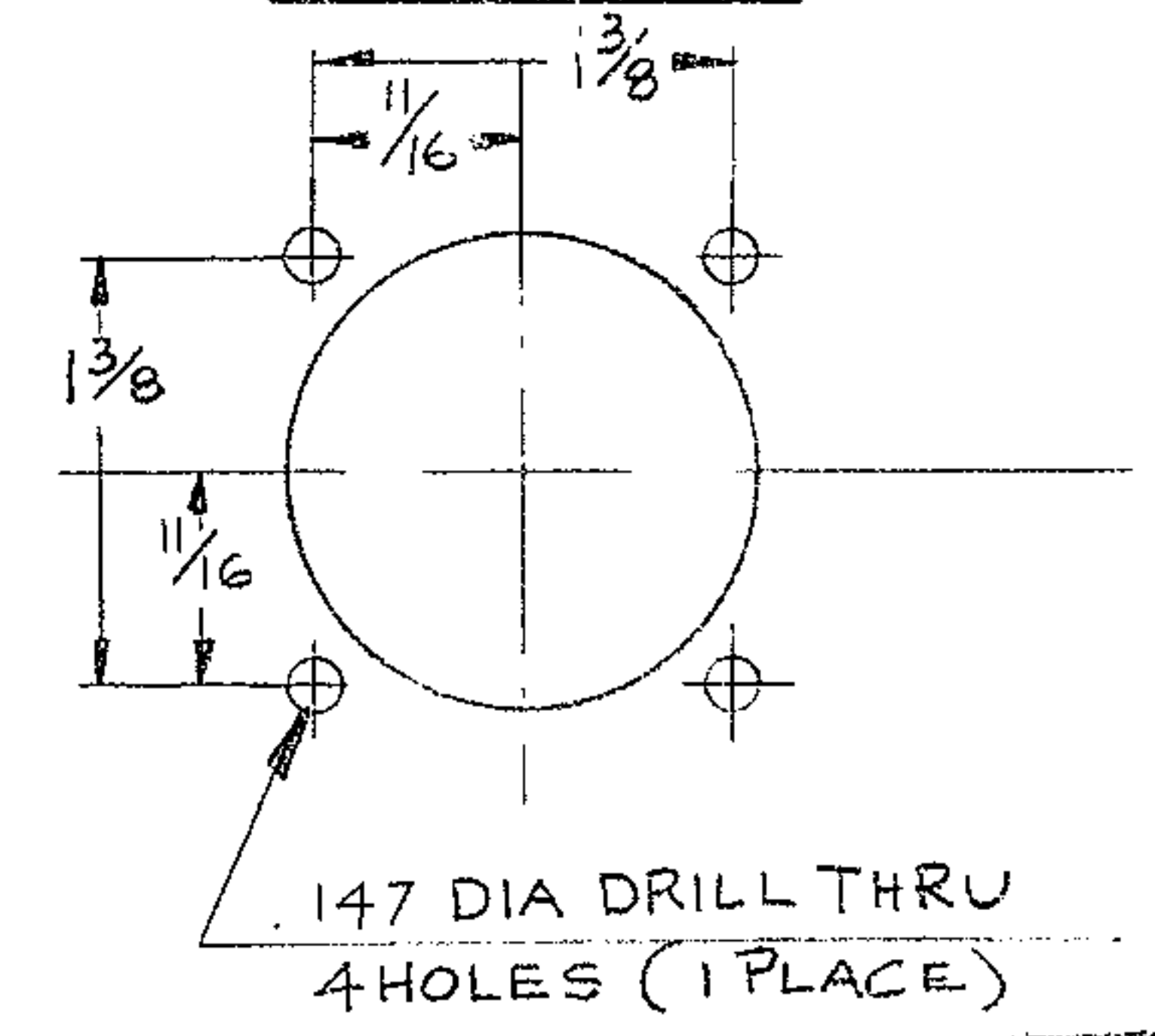
1 3/8 DIA DRILL THRU (C) (1 PLACE)



DETAIL: C (SCALE: 1/1)



DETAIL: B (SCALE: 1/1)



NEXT ASSY: 2150.283 E 102 (W.G.N 102987)

REF. FILE 1176

WESTERN GEAR CORPORATION  
 CONSTRUCTION PROJECTS  
 DEPARTMENT  
 APPROVED FOR  
 PROCUREMENT  
*P. Gnepe* DATE 1-16-69

FIND NO.	PART NO.	DESCRIPTION	QTY	MATERIAL	CODE IDENT
LIST OF MATERIAL (LM)					
LIMITS ON MACHINED DIMENSIONS EXCEPT AS NOTED ANGULAR = ± 1° 0'		150 IN STELLAR TELESCOPE MOUNTING		HEAVY MACHINERY DIVISION EVERETT, WASHINGTON <b>PLATE, CONNECTOR - COUDÉ 3</b>	
LINEAR: .X = ± .1    .XXX = ± .010 .XX = ± .03    FRACTIONAL = ± 1/32		DRAWN S. SHAH. 1-9-69 CHECK <i>Gene Russo</i> 1/9/69 ENGR			
MATERIAL STEEL ASTM A-7 OR EQ 6 1/2 X 1/8 X 9 1/4		W.G.D 107671 APPROVED		SIZE <b>C</b>	CODE IDENT NO. <b>16603</b>
				2150.283C115	REV <b>B</b>
		SCALE 1/2		WT	LB SHEET 1 OF 1