

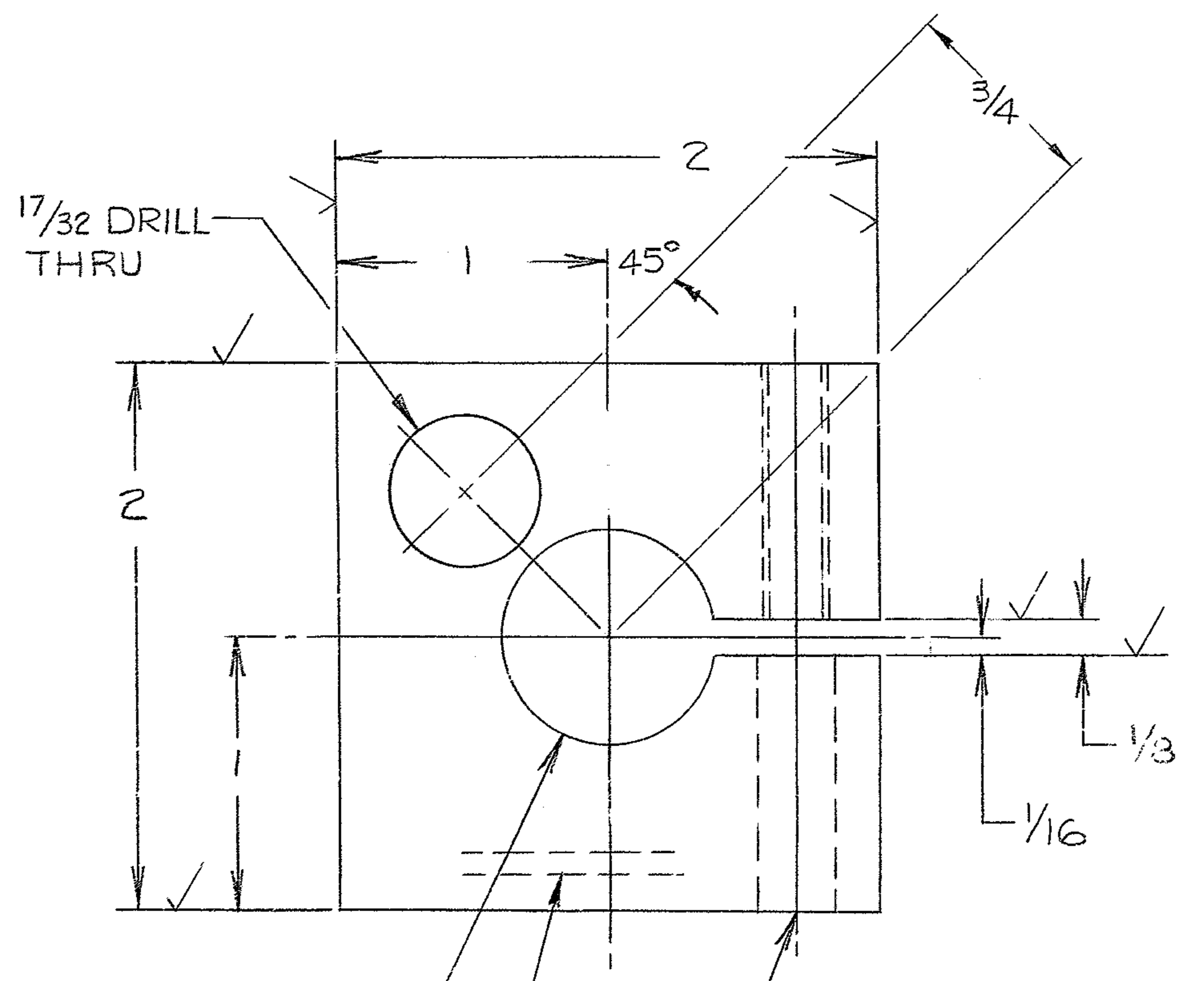
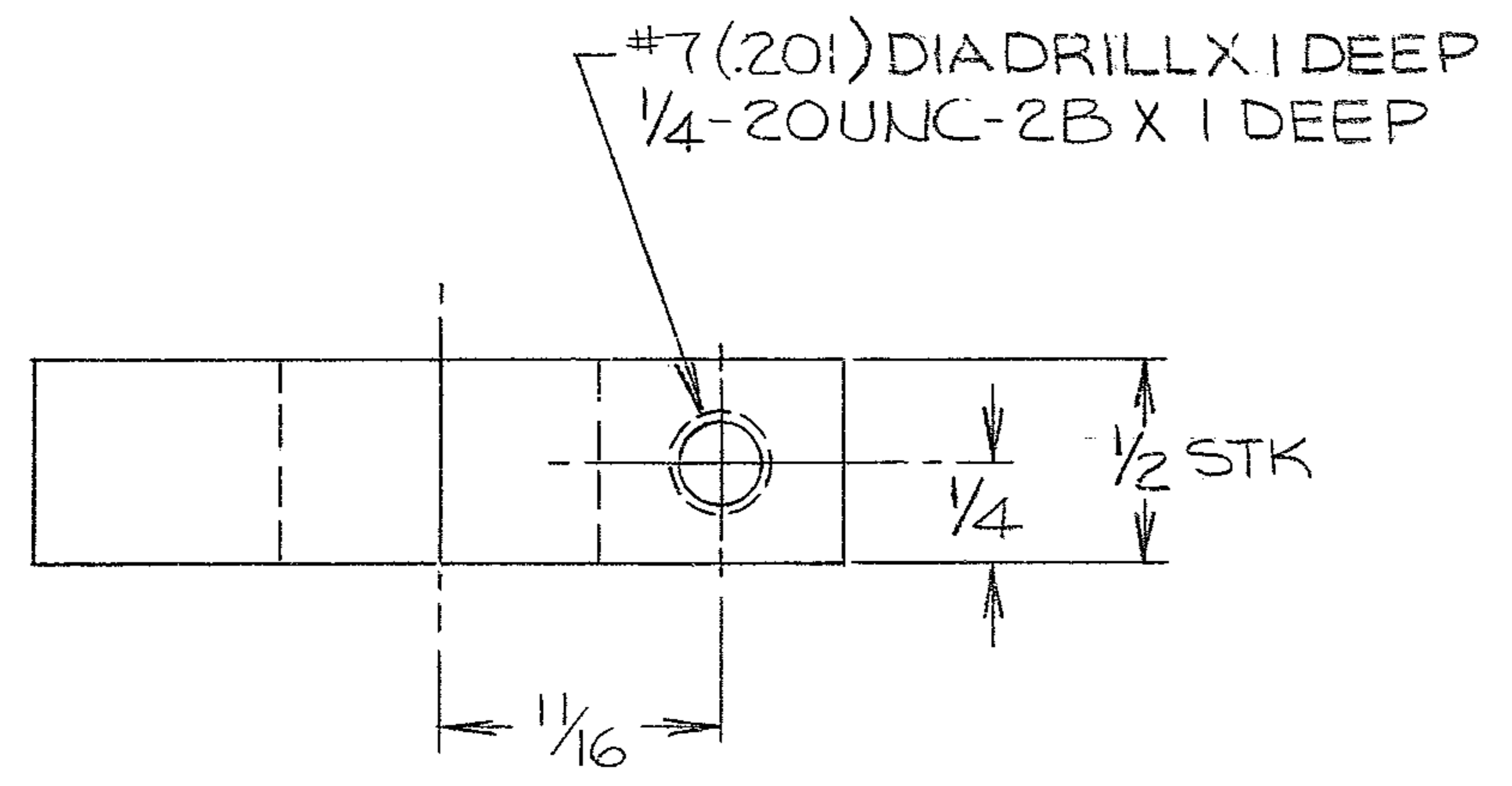
4

3

2

1

REVISIONS				
ZONE	LTR	DESCRIPTION	DATE	APPROVED
A		REVISED PER AURA APPD PRINT	11-6-68	



- NOTES:
1. ALL DIMENSIONS ARE IN INCHES
 2. ALL SURFACES MARKED ✓ TO BE 250 ✓ EXCEPT AS NOTED
 3. STAMP WITH PART NO. 2150.283C010

REF. FILE 1176

23/32 DIA DRILL THRU
.750 REAM
1/16

WESTERN GEAR CORPORATION
CONSTRUCTION PROJECTS
DEPARTMENT
APPROVED FOR
PROCUREMENT

PG DATE 11/21/68

NEXT ASSY 2150.283E 002 (W.G.N 102,989)

FIND NO.	PART NO.	DESCRIPTION	QTY	MATERIAL	CODE IDENT
LIST OF MATERIAL (LM)					
LIMITS ON MACHINED DIMENSIONS EXCEPT AS NOTED ANGULAR = ± 1° 0'		150IN STELLAR TELESCOPE MTG		HEAVY MACHINERY DIVISION EVERETT, WASHINGTON	
LINEAR: X = ± .1 .XXX = ± .010 .XX = ± .03 FRACTIONAL = ± 1/32		DRAWN BIRKENDAHL 3-18-68 CHECK <i>F. Madala</i> 5-18-68		YOKE, CELL COVER COUDE #3 ASSY	
BREAK ALL SHARP EDGES		ENGR			
MATERIAL STL F2 2X2 X 1/2 THK ASTM A7 OR EQUIV.		W.G.D 107,447		SIZE C	CODE IDENT NO. 16603
APPROVED				2150.283C010	REV A
		SCALE 2/1		WT	LB SHEET 1 OF 1