

5

4

3

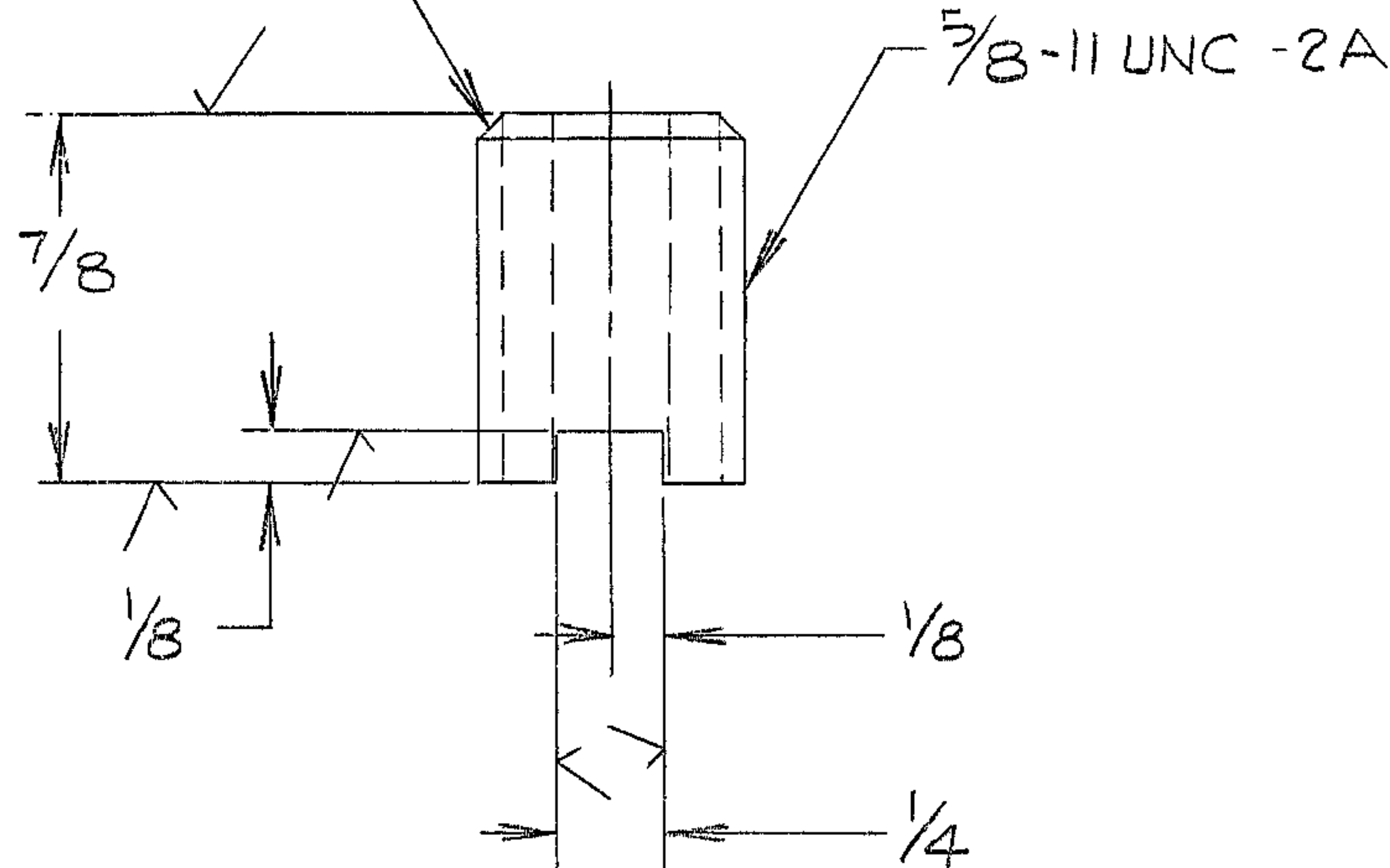
2

1

REVISIONS

ZONE	LTR	DESCRIPTION	DATE	APPROVED
C4	A	ALL FINISH MARKS ADDED	11-9-68	
	A	REVISED PER AURA APPD PRINT	11-9-68	
C1	B	CHANGED DIA TO 5/8 WAS 3/4	1-22-69	PG

1/32 X 45°

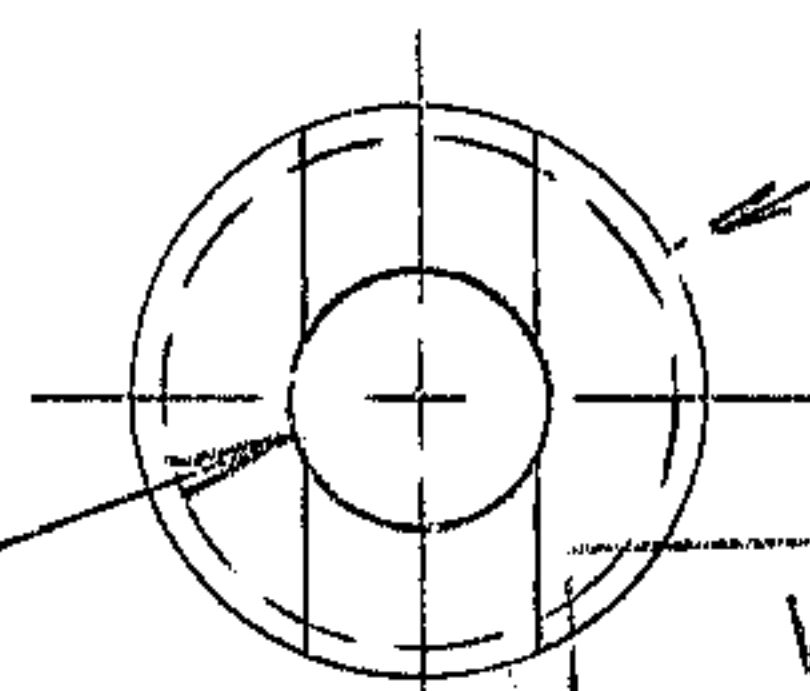


NOTES:

1. ALL DIMENSIONS ARE IN INCHES
2. ALL SURFACES MARKED ✓ TO BE 125 ✓ EXCEPT AS NOTED
3. MATERIAL: STL ROD 5/8 DIA X 7/8 LG AISI C1018 C.R.

TAG WITH PART NO. 2150.283 B609

9/32 DIA DRILL THRU



WESTERN GEAR CORPORATION
 CONSTRUCTION PROJECTS
 DEPARTMENT
 APPROVED FOR
 PROCUREMENT

DATE 11/68

NEXT ASSY 2150.283 E602 (W.G.N 102,988)

REF. FILE 1176

LIMITS ON MACHINED DIMENSIONS EXCEPT AS NOTED ANGULAR ± 1° 0' LINEAR .X = ± .1 .XX = ± .03 .XXX = ± .010 FRACTIONAL ± 1/32 BREAK ALL SHARP EDGES	150IN STELLAR TELESCOPE MTG.	Western GEAR CORPORATION HEAVY MACHINERY DIVISION EVERETT, WASHINGTON	
	DRAWN BIRKENDahl 3/13/68 CHECKED [Signature] 5-13-68 ENGR	SCREW, SPECIAL COUDE #3 ASSY	
W.G.C. 112467	SIZE B	CODE IDENT NO. 16603	2150.283B609
APPROVED	SCALE 2/1	WT.	LB SHEET 1 OF 1
			REV B