

5

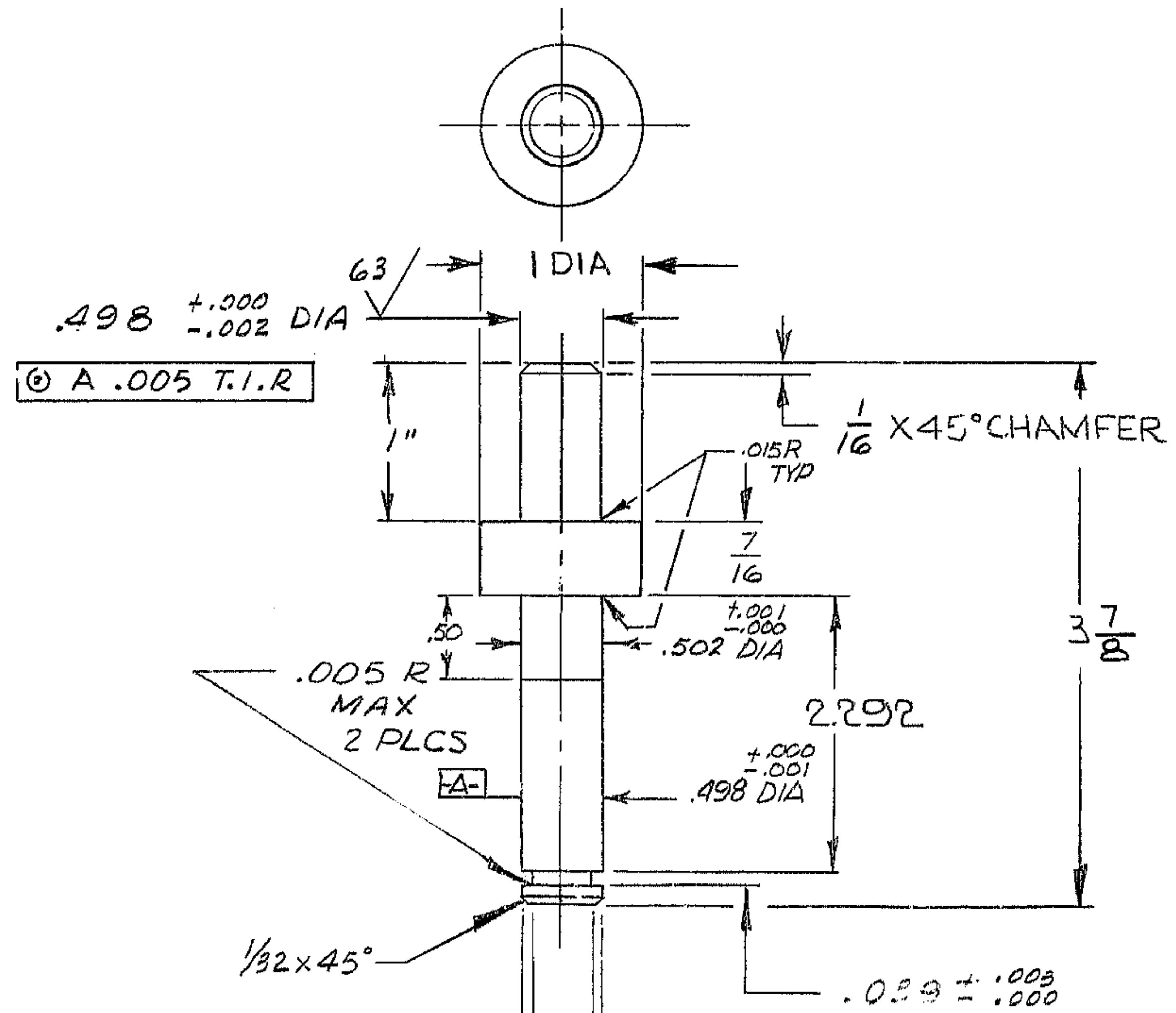
4

3

2

1

REVISIONS				
ZONE	LTR	DESCRIPTION	DATE	APPROVED
D-4	A	3/4 DIM DELETED	11-1-68	
C-5	A	3/8 DIM DELETED	"	
B-4	A	.50 \pm .001 \pm .001 \pm .001 DIM ADDED	"	
B-4	A	3/4 ADDED, 1.615 WAS 1.700	"	
B-4	A	1.849 DIM DELETED, [-A-] ADDED	"	
C-3	A	3/4 WAS 3/4 REF	"	
A-5	A	.498 \pm .002 DIA DIM DELETED	"	
C-2	A	1/8 DIA X 3 1/2 WAS 1 DIA X 3 1/4, OR EQ. ADDED	"	
	A	REVISED PER AURA APPD PRINT	"	
	B	2.292 WAS 1.615 : 3/8 WAS 3/4	5-6-71	



NOTES :

1. ALL DIMENSIONS ARE IN INCHES.
2. MAT'L: 1/8 DIA. X 3 7/8 ROD AISI C1018 STL. OR EQUAL
3. TAG WITH PT. NO. 2150.283B514
4. FINISH $\sqrt{125}$ ALL OVER, EXCEPT AS NOTED

WESTERN GEAR CORPORATION
 CONSTRUCTION PROJECTS
 DEPARTMENT
 APPROVED FOR
 PROCUREMENT

NEXT ASS'Y 2150.283E502(WGN102974)

REF. FILE 1176

LIMITS ON MACHINED DIMENSIONS EXCEPT AS NOTED ANGULAR \pm 1° 0' LINEAR .X = \pm .1 .XX = \pm .03 .XXX = \pm .010 FRACTIONAL \pm 1/32 BREAK ALL SHARP EDGES	150 IN STELLAR TELESCOPE MOUNTING	Western GEAR CORPORATION HEAVY MACHINERY DIVISION EVERETT, WASHINGTON	
	DRAWN G COSTA CHECK <i>J. Midway</i> ENGR	SHAFT, DRIVE CENTRAL DUST COVER COUDE #3	
WGC112454	SIZE B	CODE IDENT NO. 16603	2150.283B514
APPROVED	SCALE 1/1	WT.	LB SHEET 1 OF 1

DATE 1/21/68