

5

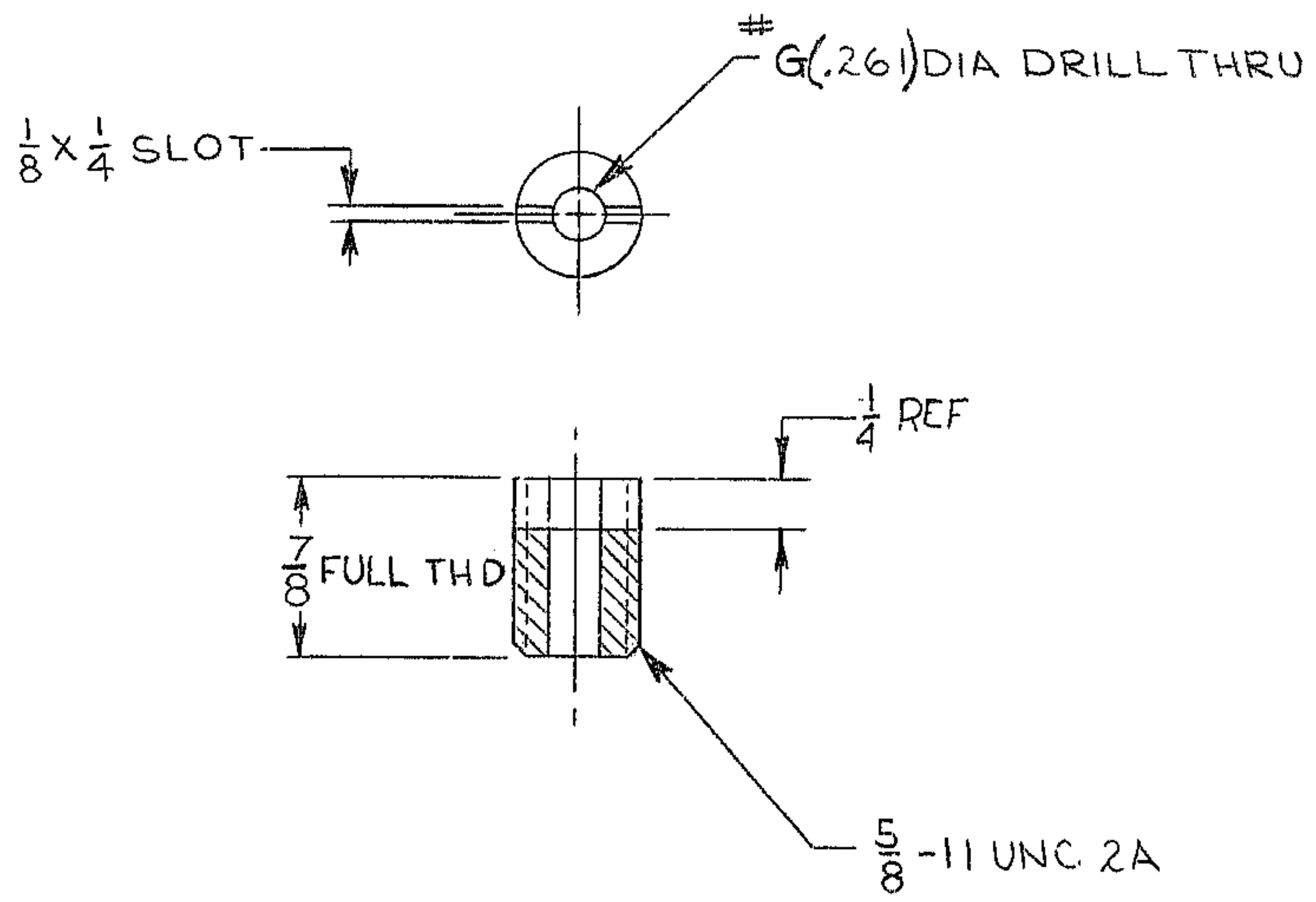
4

3

2

1

REVISIONS				
ZONE	LTR	DESCRIPTION	DATE	APPROVED
C2	A	NOTE #1, DIMENSIONS WAS DIMENSION	11-2-68	
C2	A	NOTE #2, OR EQUAL ADDED	"	
B2	A	NOTE NO. 4 ADDED.	"	
	A	REVISED PER AURA APPD PRINT	"	



NOTES

1. ALL DIMENSIONS ARE IN INCHES.
2. MAT'L: $\frac{5}{8}$ DIA. x $\frac{7}{8}$ ROD AISI C1018 STL. OR EQUAL
3. TAG WITH PT. NO. 2150.283B506.
4. $\sqrt{125}$ ALL OVER

REF. FILE 1176

WESTERN GEAR CORPORATION
 CONSTRUCTION PROJECTS
 DEPARTMENT
 APPROVED FOR
 PROCUREMENT

DATE 11/21/68

NEXT ASS'Y 2150.283E502(WGN102974)

LIMITS ON MACHINED DIMENSIONS EXCEPT AS NOTED ANGULAR $\pm 1^\circ 0'$ LINEAR .X = $\pm .1$.XX = $\pm .03$.XXX = $\pm .010$ FRACTIONAL $\pm 1/32$ BREAK ALL SHARP EDGES	150 ^{IN} STELLAR TELESCOPE MOUNTING	western GEAR CORPORATION HEAVY MACHINERY DIVISION EVERETT, WASHINGTON	
	DRAWN G. COSTA CHECK <i>[Signature]</i> ENGR	SCREW CENTRAL DUST COVER COUDE #3	
WGC112435	SIZE B	CODE IDENT NO. 16603	REV A
APPROVED	SCALE 1/1	WT.	LB SHEET 1 OF 1