

5

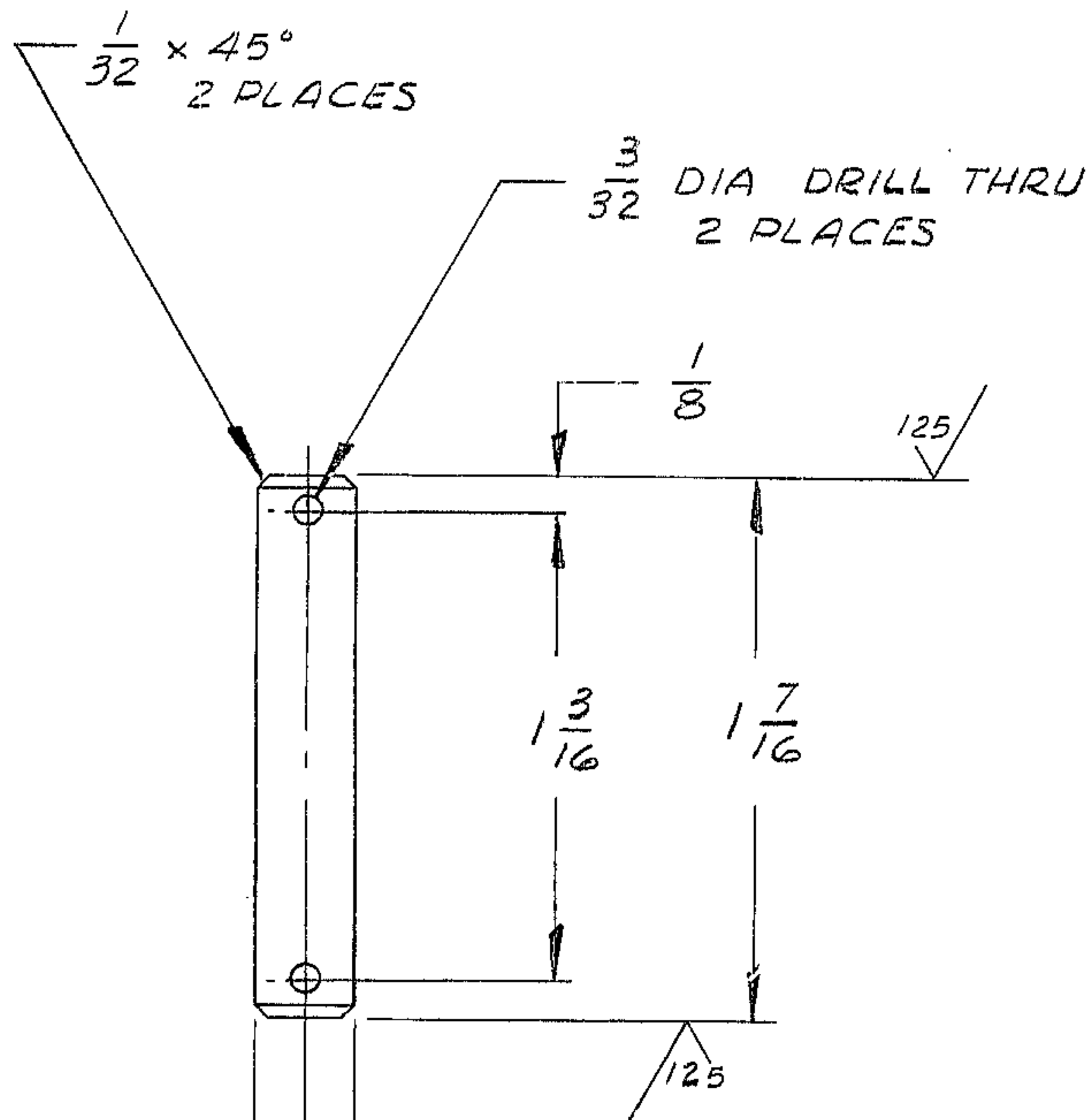
4

3

2

1

REVISIONS				
ZONE	LTR	DESCRIPTION	DATE	APPROVED
	A	REV PER AURA APP PRINT	10/22/68	



NOTES:

- 1. ALL DIMENSIONS ARE IN INCHES.
- 2. ALL SURFACES SHALL BE  $\sqrt{63}$  UNLESS OTHERWISE SPECIFIED.
- 3. MATERIAL: STL AISI C 1045 PRECISION SHAFTING  $.312^{+.000}_{-.001}$  DIA x  $1\frac{5}{8}$  LONG. OR EQ.
- 4. TAG WITH PART NO. 2150.283B407

REF. FILE 1176

NEXT ASSY 2150.283C402 (W.G.D 107441)

.312  $^{+.000}_{-.001}$  DIA STK

WESTERN GEAR CORPORATION  
 CONSTRUCTION PROJECTS  
 DEPARTMENT  
 APPROVED FOR  
 PROCUREMENT  
 P.G. DATE 11/22/68

LIMITS ON MACHINED DIMENSIONS EXCEPT AS NOTED ANGULAR $\pm 1^\circ 0'$ LINEAR .X = $\pm .1$ .XX = $\pm .03$ .XXX = $\pm .010$ FRACTIONAL $\pm 1/32$  BREAK ALL SHARP EDGES	150 W STELLAR TELESCOPE MOUNTING	Western GEAR CORPORATION HEAVY MACHINERY DIVISION EVERETT, WASHINGTON		
	DRAWN COSTA CHECK J. McCollum ENGR	SHAFT, PIVOT CYLINDER COUDE NO. 3		
W.G.C 112450	APPROVED	SIZE B	CODE IDENT NO. 16603	2150.283B407
		SCALE 2/1	WT. .1 LB	SHEET 1 OF 1