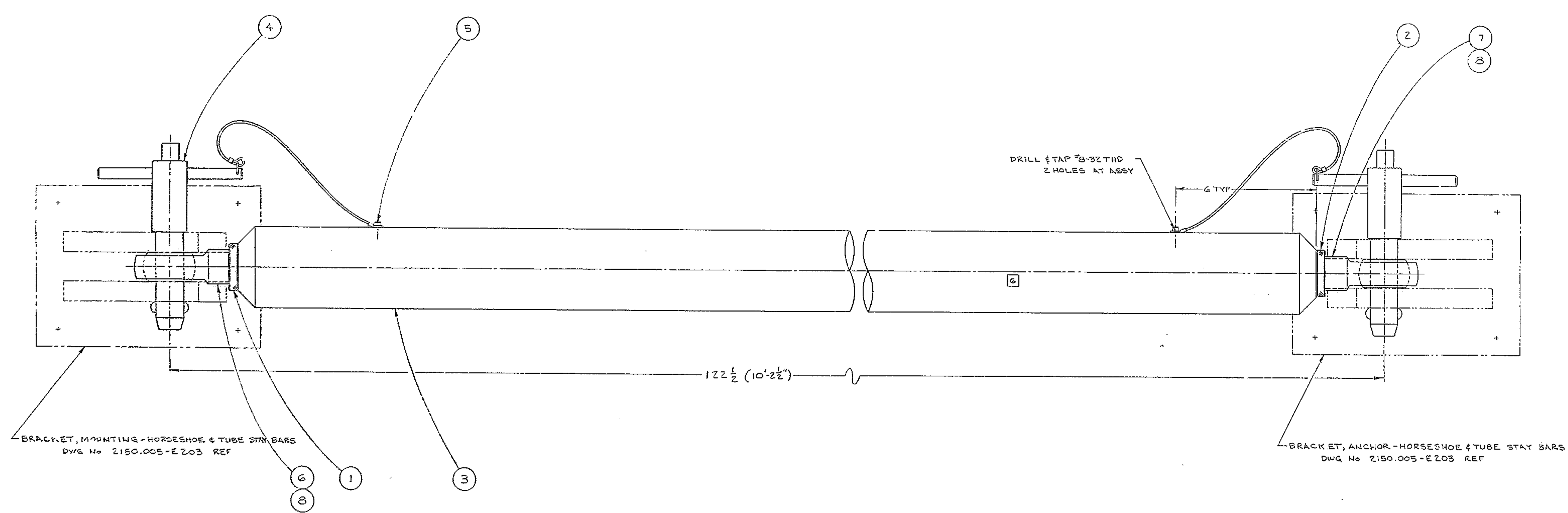


BILL OF MATERIAL

ITEM	QTY	MATERIAL	DESCRIPTION	WEIGHT
------	-----	----------	-------------	--------

FOR B/M SEE 2.50.281-A.302



- G. IMPRESSION STAMP IN 1/4" HIGH CHARACTERS "TUBE STAY BAR - DWG No 2150.281-E302"
- 5-BREAK-SHARP-EDGES
- 4-IDENTIFY-BY \_\_\_\_\_ AT-LOCATION \_\_\_\_\_ 4" "MADE IN USA"
- 3-STAMP-MATCH-MARKS-ON-ALL-MATING-PARTS-WHERE-NECESSARY
- 2-PROJECT DRAWINGS
- 1-FOR NEXT ASSY. SEE 2.120-E 147

NOTES:

<p>TOLERANCES UNLESS OTHERWISE NOTED</p> <p>DECIMAL DIMENSIONS 0.000 ± .010 00.000 ± .003</p> <p>FRACTIONAL DIMENSIONS UP TO 16" ± 1/32 16" TO 64" ± 1/16 64" &amp; OVER ± 1/16</p> <p>ANGLES ± 0°-30'</p> <p>ALL SURFACES TO HAVE <math>\sqrt{R}</math> FINISH UNLESS OTHERWISE NOTED.</p>		<p><b>KITT PEAK NATIONAL OBSERVATORY</b> OPERATED BY THE ASSOCIATION OF UNIVERSITIES FOR RESEARCH IN ASTRONOMY, INC. UNDER CONTRACT WITH NATIONAL SCIENCE FOUNDATION</p>	
<p>150 INCH STELLAR TELESCOPE</p>		REF. FILE	1175
<p>NAME TUBE STAY BAR ASSY</p>		SCALE	1/2
<p>PRINT ISSUED</p>		<p>DRAWING NUMBER 2150.281-E302 A</p>	
DESIGNED BY	DATE	APPROVED BY	DATE
DRAWN BY	DATE	APPROVED BY	DATE
CHECKED BY	DATE	APPROVED BY	DATE
LEG.	REVISION	FOR	DATE BY