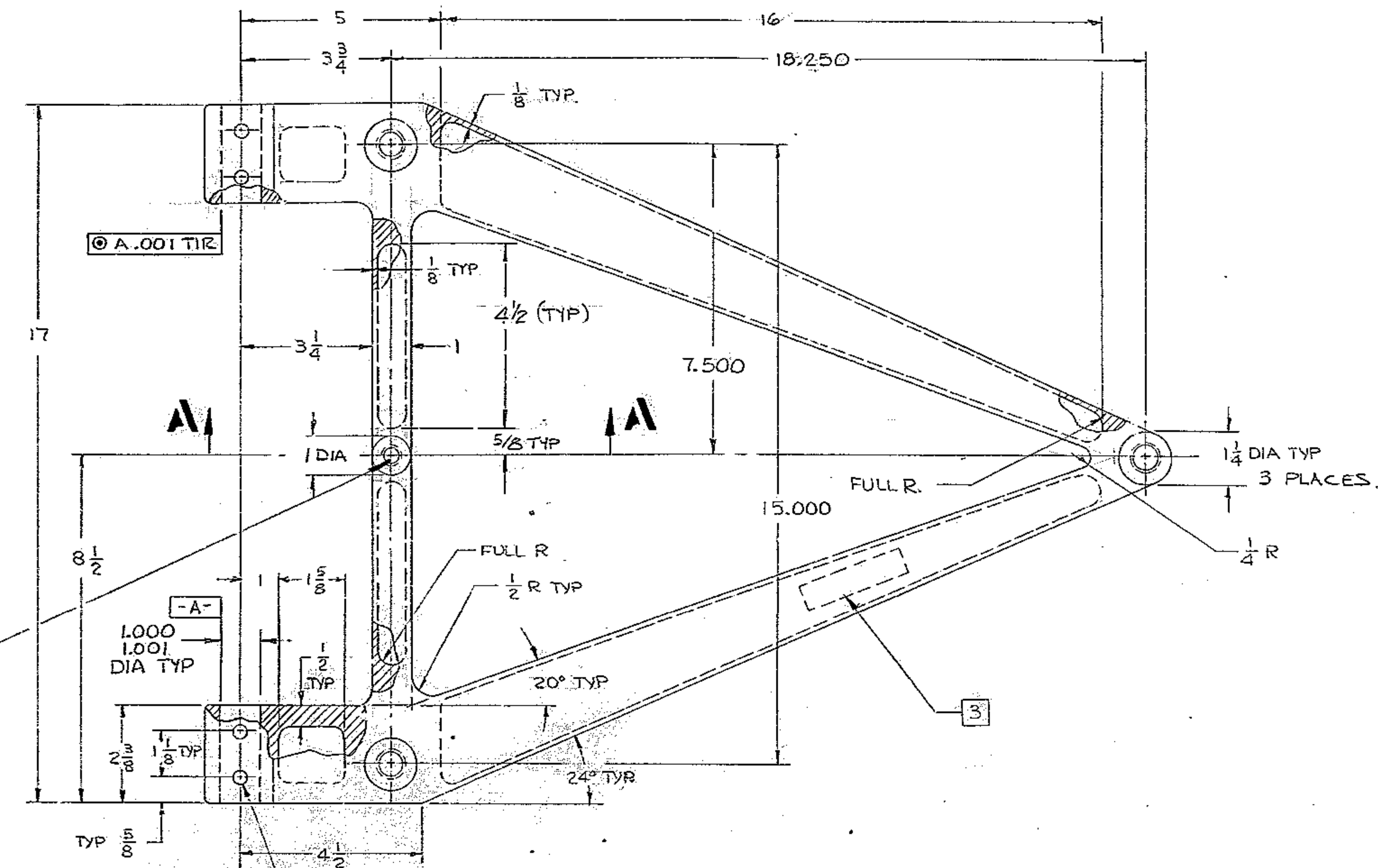
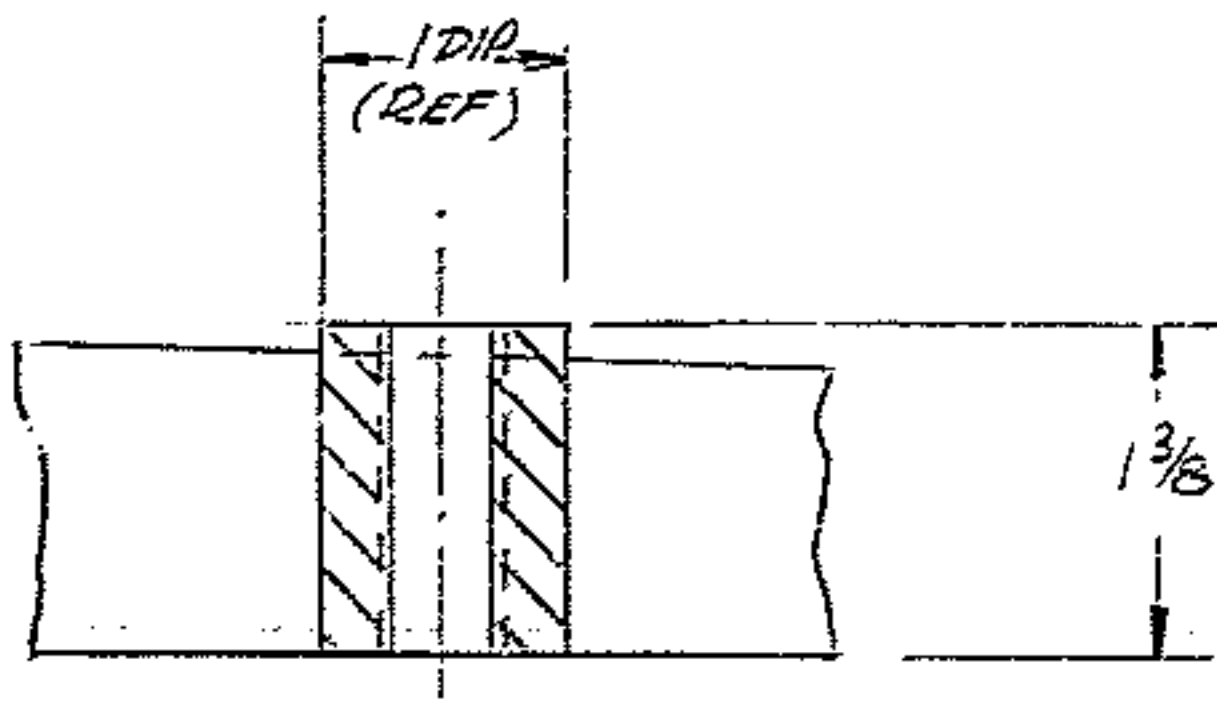


REVISIONS				
ZONE	LTR	DESCRIPTION	DATE	APPROVED
D7	A	SECTION A-A ADDED	10-4-68	
C6	A	1 DIM WAS 1/16		
C3	A	1 1/2 WAS 2		
F5	A	4 1/2 TYP 5/8 AND 1 DIA ADDED		
F7	A	1/2-13UNC TAPPED HOLE ADDED		
A		APPR PER AREA CONSTRUCTION PRINT 20/68		



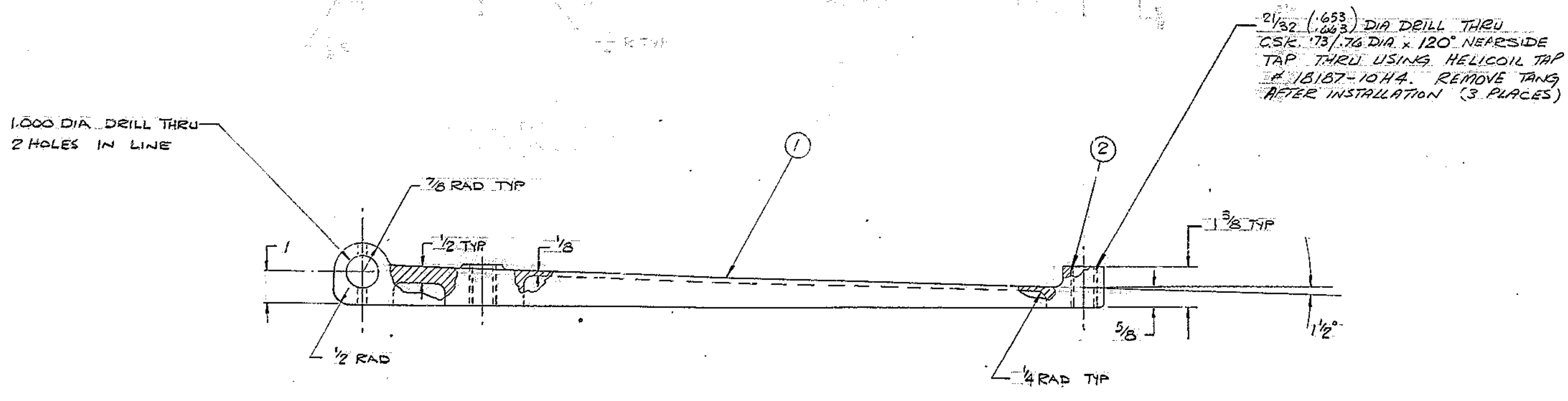
2 1/16 DIA DRILL THRU
TAP 1/2-13UNC-2B THRU.



SECTION A-A
SCALE 1/1

MATERIAL LIST				
PC NO	QTY	DESCRIPTION	MATL # SPEC	RH.WT.
1	1	CASTING, HINGE	ALUM 355-T51	34
2	3	HELICOIL INSERT 5/8-11UNC-2B X 1.250 LB PART NO. HBS-10CN 1250	HELICOIL INSERT CORP.	-

- NOTES
- ALL DIMENSIONS ARE IN INCHES.
 - CASTING TOLERANCE ± 1/8 EXCEPT AS NOTED.
FILLET RADIUS = 1/4 INCHES EXCEPT AS NOTED.
CORNER RADIUS = 1/8 INCHES EXCEPT AS NOTED.
DRAFT ANGLE = 1° MAX.
 - CAST PART NO. 2150.281E010 CHARACTERS TO BE 1/4 HIGH RAISED .03.
 - APPLY ONE COAT OF PRIME PAINT ALL OVER PER W.G.C. SPEC 511 BEFORE MACHINING.
 - PATTERN NO. 2150.281E010



NEXT ASSY 2150.281E002 (W.G.N103002)

WESTERN GEAR CORPORATION
CONSTRUCTION PROJECTS
DEPARTMENT
APPROVED FOR
PROCUREMENT
DATE 11/11/68

FIG. NO.	PART NO.	DESCRIPTION	QTY	MATERIAL	CODE IDENT
LIST OF MATERIAL (LM)					
LIMITS ON MACHINED DIMENSIONS EXCEPT AS NOTED					
ANGULAR = ± 1°					
LINEAR: .XX = .1 .XXX = .010					
.XX = ± .03 FRACTIONAL = ± 1/32					
BREAK ALL SHARP EDGES					
MATERIAL					
SEE MATL LIST					
150 IN STELLAR TELESCOPE MOUNTING					
DRAWN B.S. 5/21/68					
CHECK B.S. 8/5/68					
ENGR					
WESTERN GEAR CORPORATION HEAVY MACHINERY DIVISION EVERETT, WASHINGTON					
HINGE, 1215 COVER, CENTER SECTION					
W.G.N103052					
SIZE CODE IDENT NO. REV					
E 16603 2150.281E010 A					
APPROVED					
SCALE 1/2 WT 34 LB SHEET 1 OF 1					