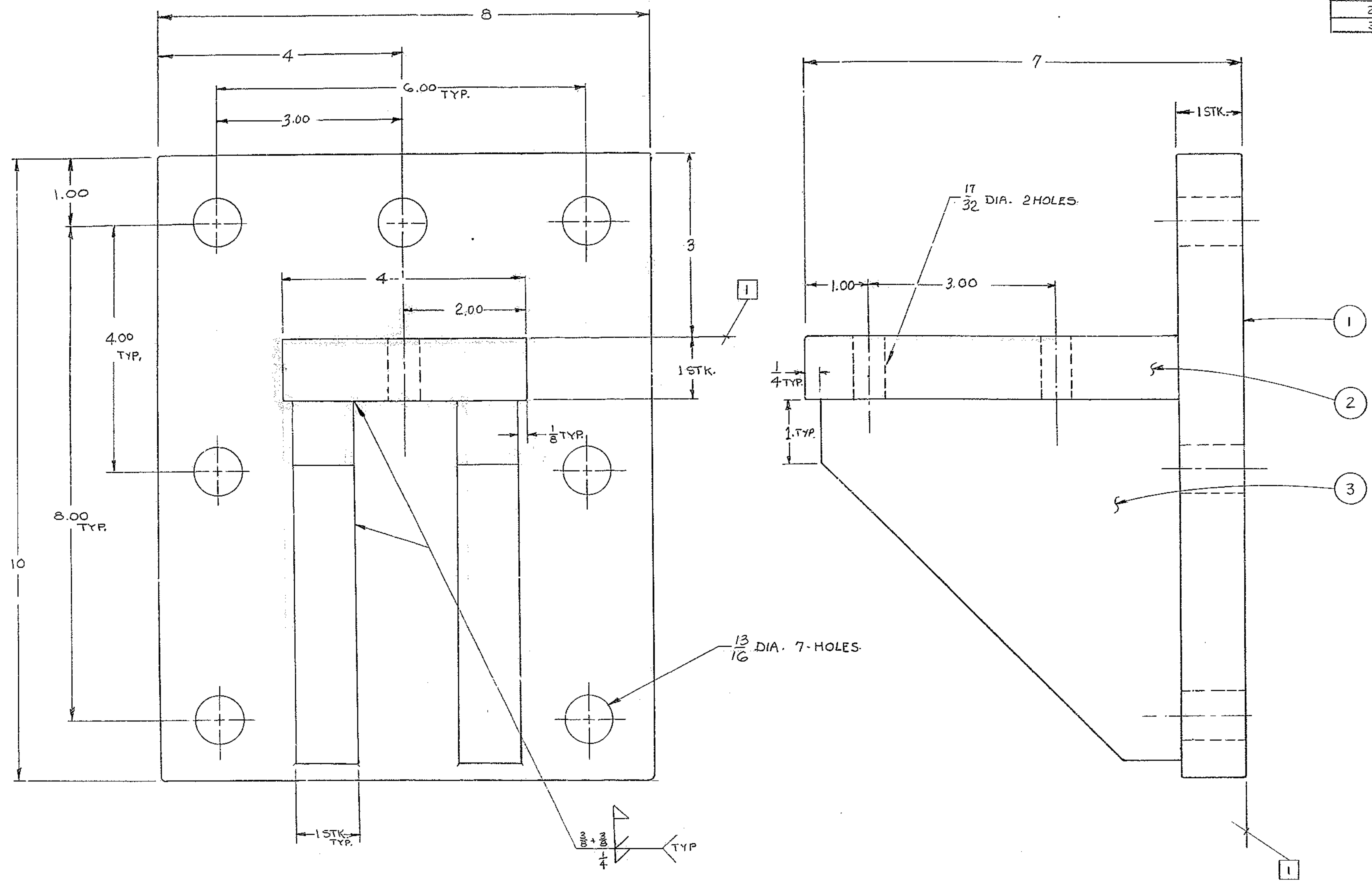


BILL OF MATERIAL

ITEM	QTY	MATERIAL	DESCRIPTION	WEIGHT
1	1	STEEL	R. 1" X 8 X 10	21.75
2	1		R. 1" X 4 X 6	6.5
3	2	STEEL	R. 1" X 5 3/4 X 5 3/4	13
				41.25 LB.



2. APPLY ONE COAT PRIME PAINT (DUNN EDWARDS #520 OR EQUAL) IMMEDIATELY AFTER WELDING & CLEANING.
 [] THESE SURFACES TO BE FLAT WITHIN 1/32.
 NOTES:

FOR ASSEMBLY SEE 2150-281-D202

<p>TOLERANCES UNLESS OTHERWISE NOTED</p> <p>DECIMAL DIMENSIONS 00.00 ± .010 00.000 ± .003</p> <p>FRACTIONAL DIMENSIONS UP TO 18" ± 1/64 18" TO 50" ± 1/32 50" & OVER ± 1/16</p> <p>BREAK SHARP EDGES 1/16</p> <p>ALL SURFACES TO HAVE 125 FINISH UNLESS OTHERWISE NOTED.</p>		<p>KITT PEAK NATIONAL OBSERVATORY OPERATED BY THE ASSOCIATION OF UNIVERSITIES FOR RESEARCH IN ASTRONOMY, INC. UNDER CONTRACT WITH NATIONAL SCIENCE FOUNDATION</p>	
		<p>150" STELLAR TELESCOPE</p>	
		<p>NAME BUMPER BLOCK WELDMENT DEC. AXIS MECHANICAL STOPS</p>	
		<p>REF. FILE 1175 SCALE FULL PRINT ISSUED</p>	
<p>DESIGNED BY J.B.H. DATE 11-2-68 DRAWN BY M. K. R. DATE 2/22/70 CHECKED BY J.R.C. DATE 7-16-70</p>		<p>APPROVED BY [Signature] DATE 6/10/69 APPROVED BY [Signature] DATE 2/22/70 APPROVED BY [Signature] DATE</p>	
<p>DRAWING NUMBER 2150-281-D203</p>		<p>REV.</p>	
LET.	REVISION	ECR	DATE BY