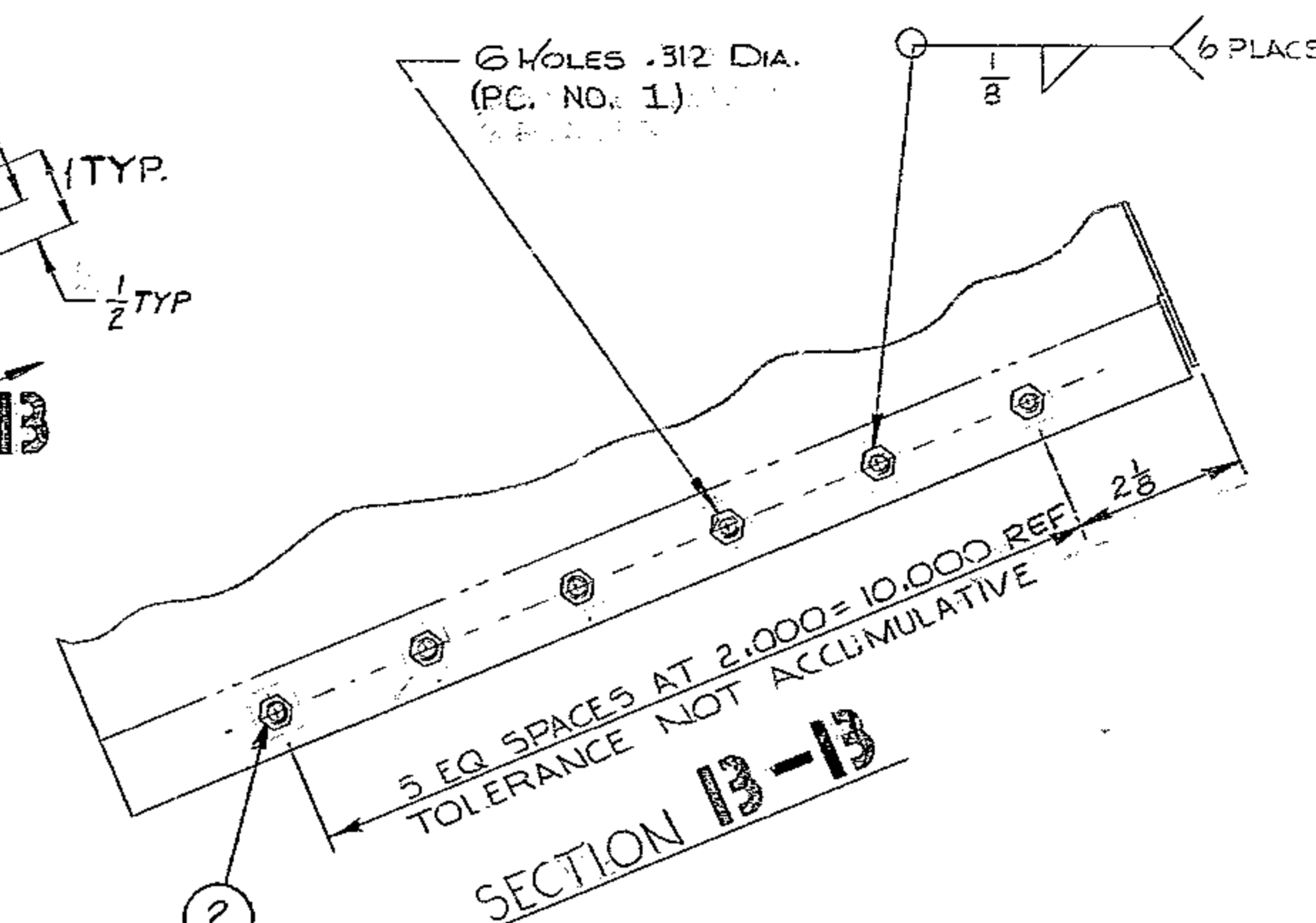
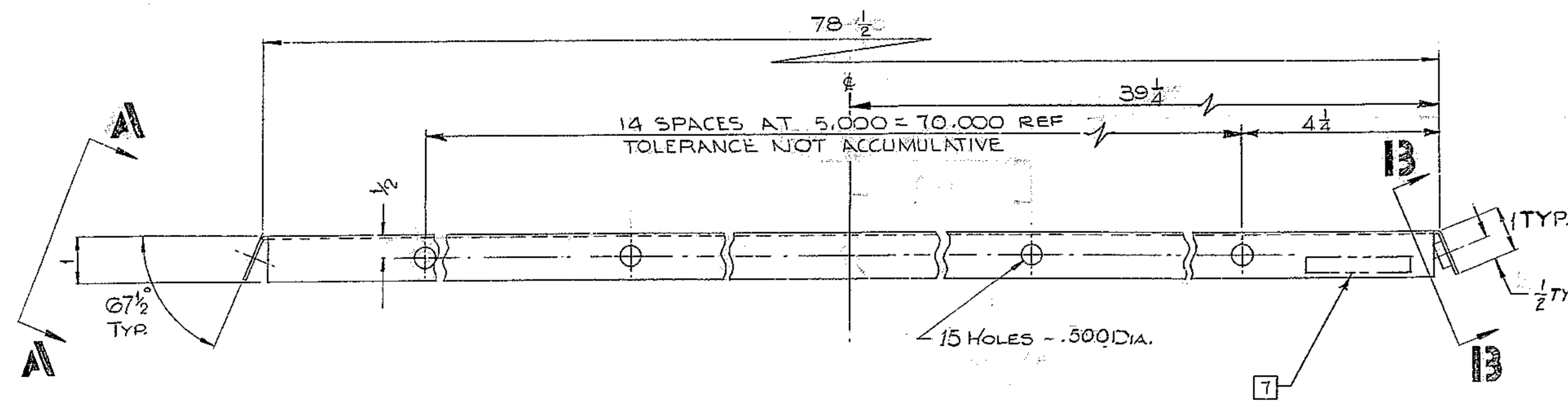
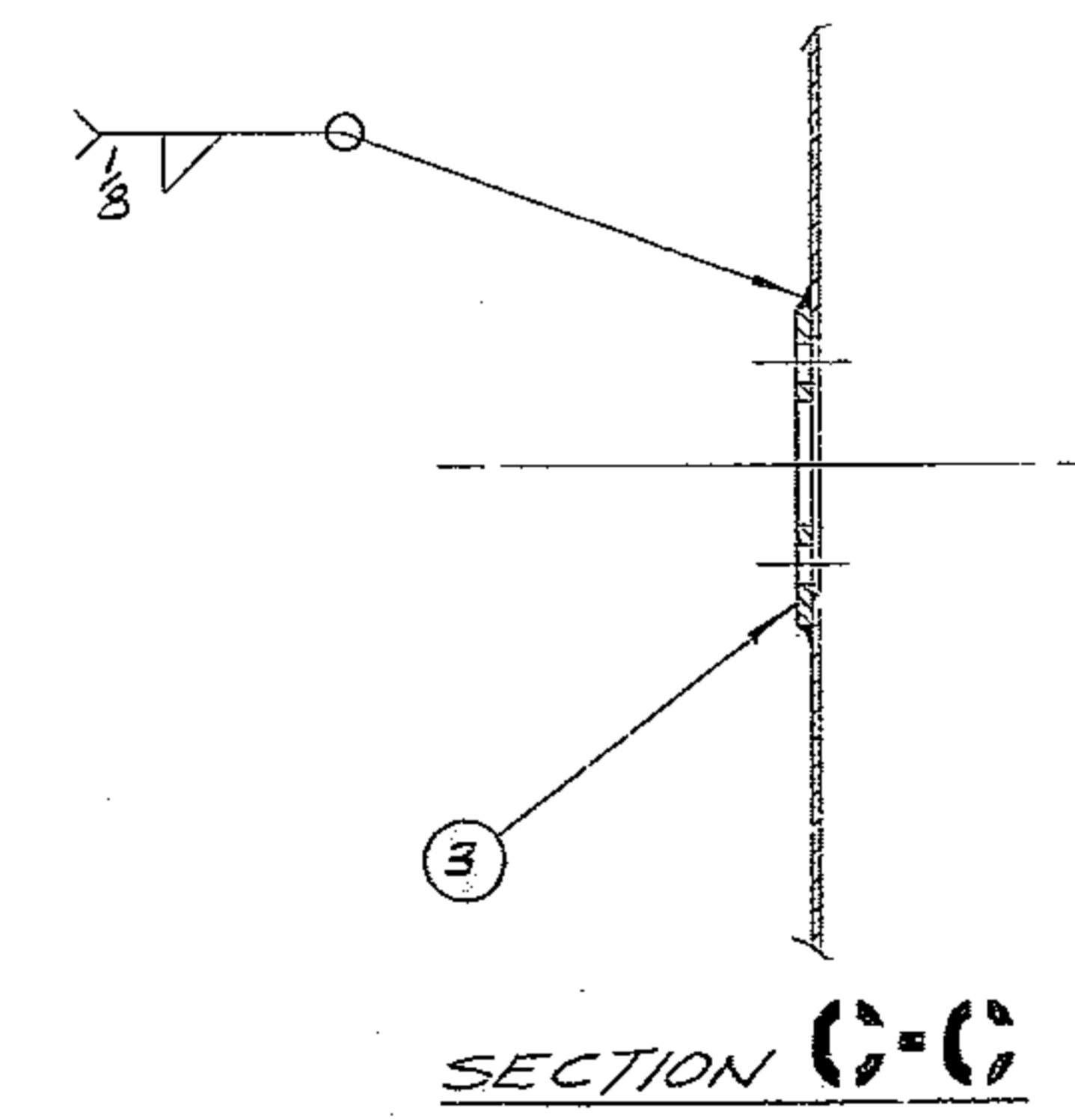
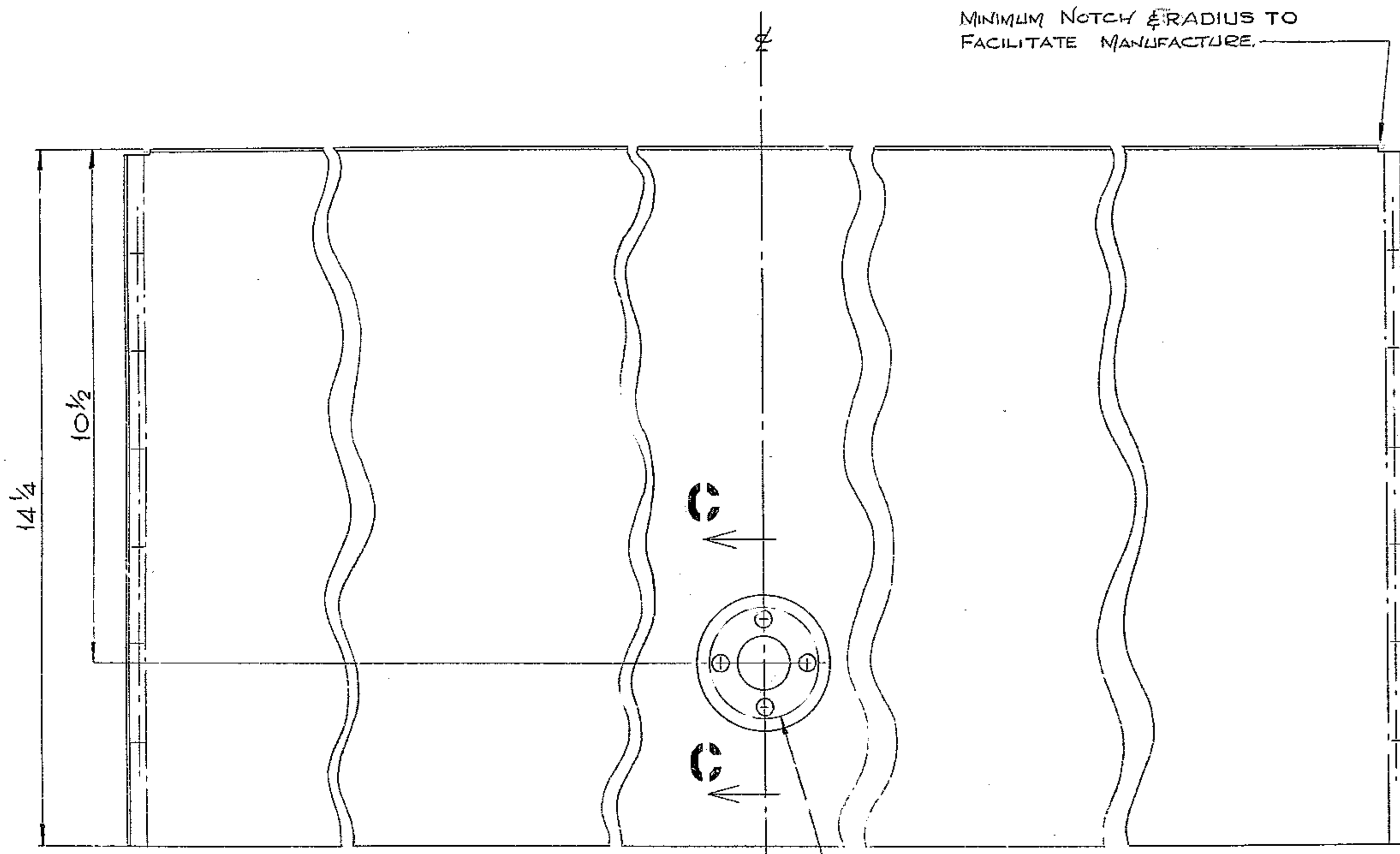


REVISIONS				
ZONE	LTR	DESCRIPTION	DATE	APPROVE
	A	REVISED PER AURA APPD CONST PRINT DATED 6 MAY 68	7 MAY 68	
	B	ADDED CALL OUT PIN 2	7/26/73	LDS



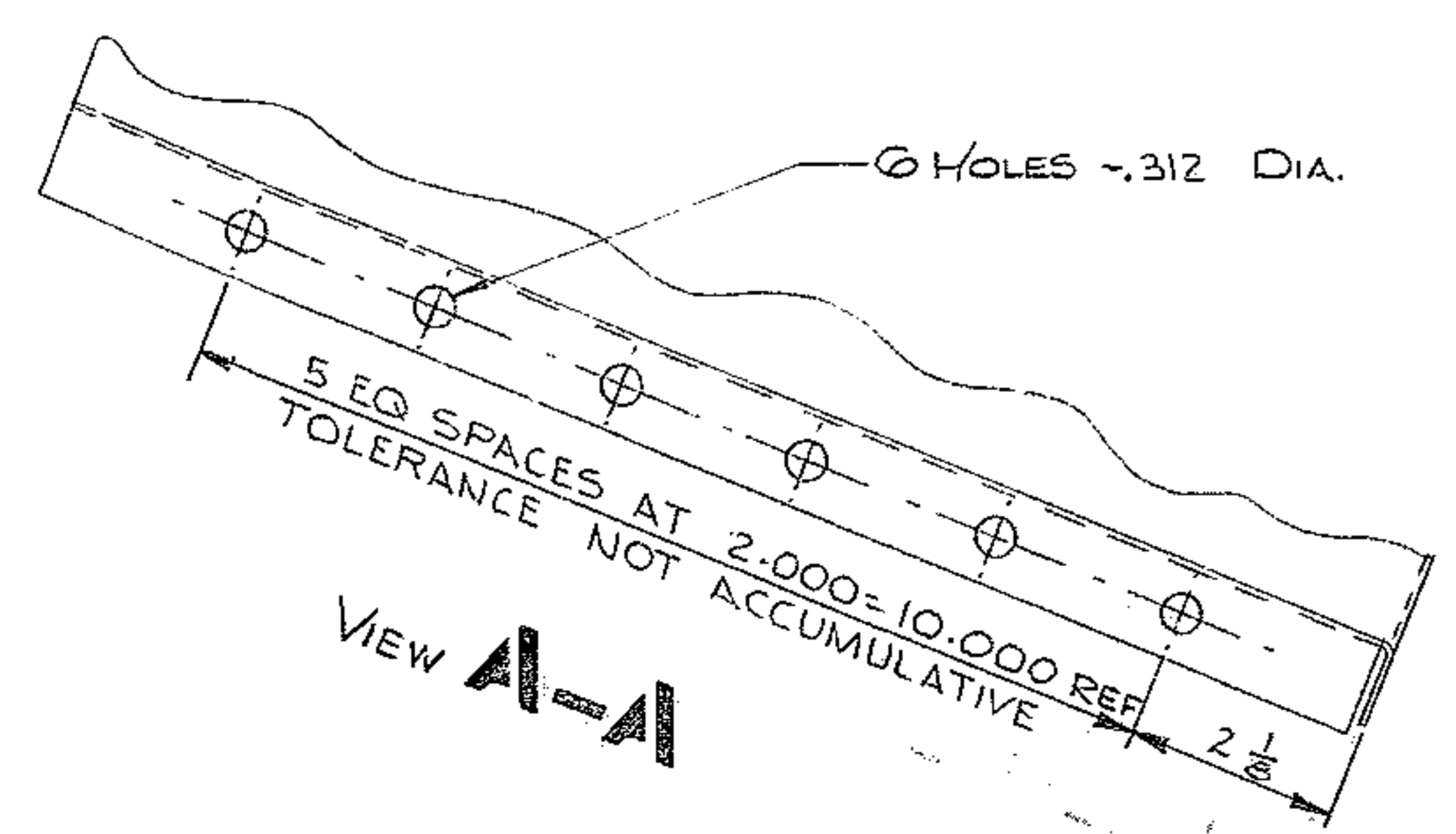
MINIMUM NOTCH & RADIUS TO FACILITATE MANUFACTURE.



MATERIAL LIST				
PC NO.	QTY.	DESCRIPTION	MAT'L & SPEC.	ROUGH WT
1	1	15 1/4 x 16 GA (.0578) x 80 1/2	STL, A.I.S.I. C-1010 COLD FINISHED	2 1/2
2	6	NUT, HEX, 1/4-20 UNC-2B	STL	-
3	1	2150.281 D111	STL	-

NOTES:

- ALL DIMENSIONS ARE IN INCHES.
- FABRICATION TOLERANCE EXCEPT AS NOTED.
UP TO 10 INCHES ± 1/16
10 IN. TO 50 IN ± 1/8
50 IN. AND OVER ± 1/4
- WELD PER A.W.S. SPEC NO. D1-0-66.
- LOCAL STRESS RELIEVE WELD JOINTS PER W.G.C. SPEC 510.
- APPLY ONE (1) COAT PRIME PAINT IMMEDIATELY AFTER STRESS RELIEF PER W.G.C. SPEC 511.
- MAX BEND RADIUS TO BE 3/32.
- STAMP PART NO. "2150.281 D111" APPROX WHERE SHOWN.



WESTERN GEAR CORPORATION
CONSTRUCTION PROJECTS
DEPARTMENT
APPROVED FOR
PROCUREMENT

J.R. DATE 8 MAY 68

NEXT ASSY: 2150.281 E 102 (WGN 102948)

FIND NO.	PART NO.	DESCRIPTION	QTY	MATERIAL	CODE IDENT
LIST OF MATERIAL (LM)					
LIMITS ON MACHINED DIMENSIONS EXCEPT AS NOTED ANGULAR = ± 1° 0'		150" STELLAR TELESCOPE MOUNTING.		WESTERN GEAR CORPORATION HEAVY MACHINERY DIVISION EVERETT, WASHINGTON	
LINEAR: X = ± .1 XX = ± .03		XXX = ± .010 FRACTIONAL = ± 1/32		DRAWN G.V. BOJANEC CHECK Gene Russo 4MAR68 ENGR	
MATERIAL SEE MAT'L LIST		WGE 107532		SIZE CODE IDENT NO. REV D 16603 2150.281 D110 B	
APPROVED		SCALE 1/2"		WT 2 1/2 LB SHEET 1 OF 1	

REF SHE 1175