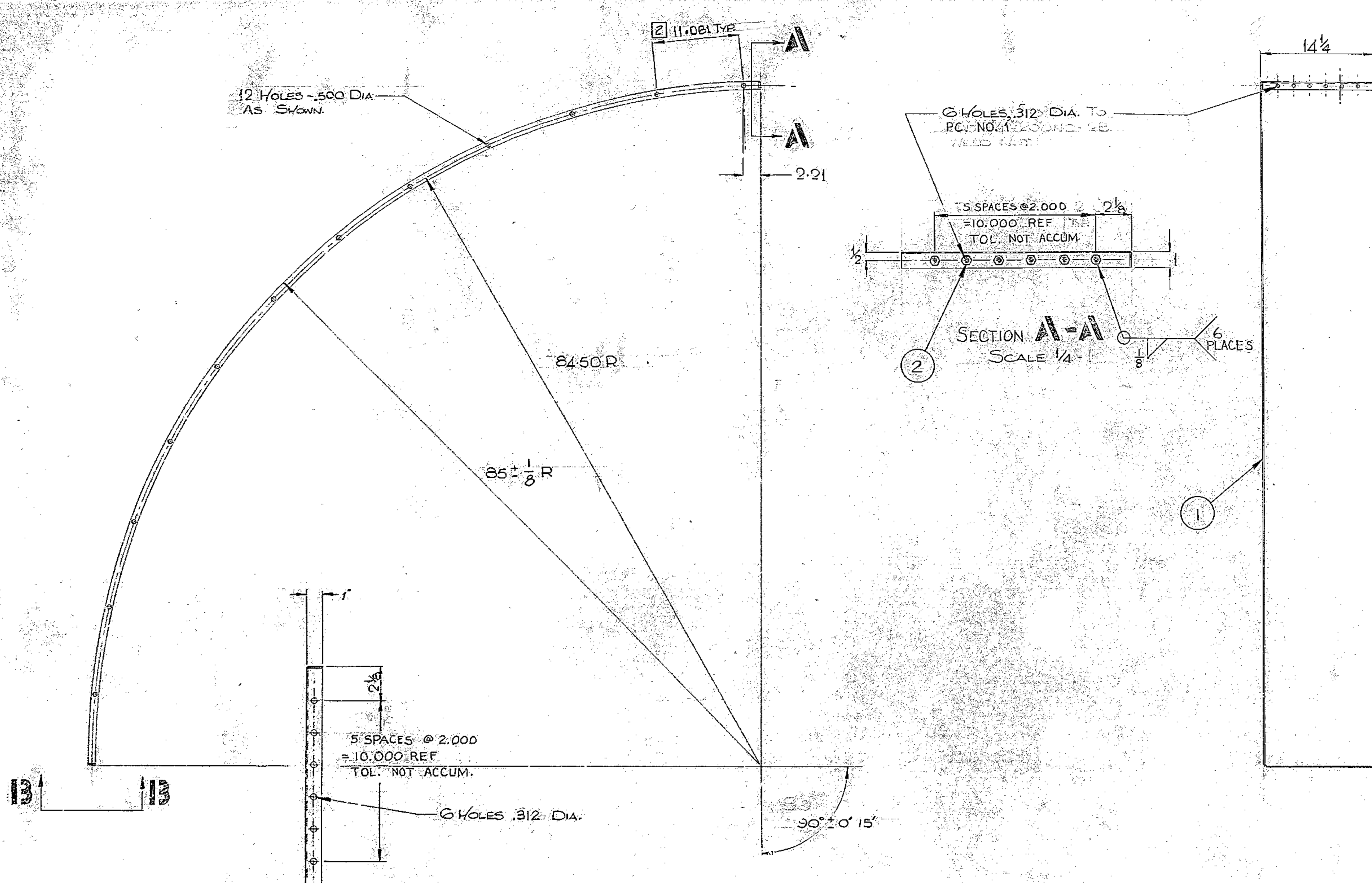


REVISIONS				
ZONE	LTR	DESCRIPTION	DATE	APPROVED
		REVISED PER AURA APPD CONST PRINT	7 MAY 68	
		DATED 6 MAY 68		



MATERIAL LIST				
PC N ^o	QTY.	DESCRIPTION	MAT ^l & SPEC.	ROUGH WT.
1	1	15 1/4 x 16 GA. (0598) x 135 1/2	STL, AISC C1010 COLD ROLLED	36
2	6	1/4" HEX 14-20 UNC-2B	STL	-

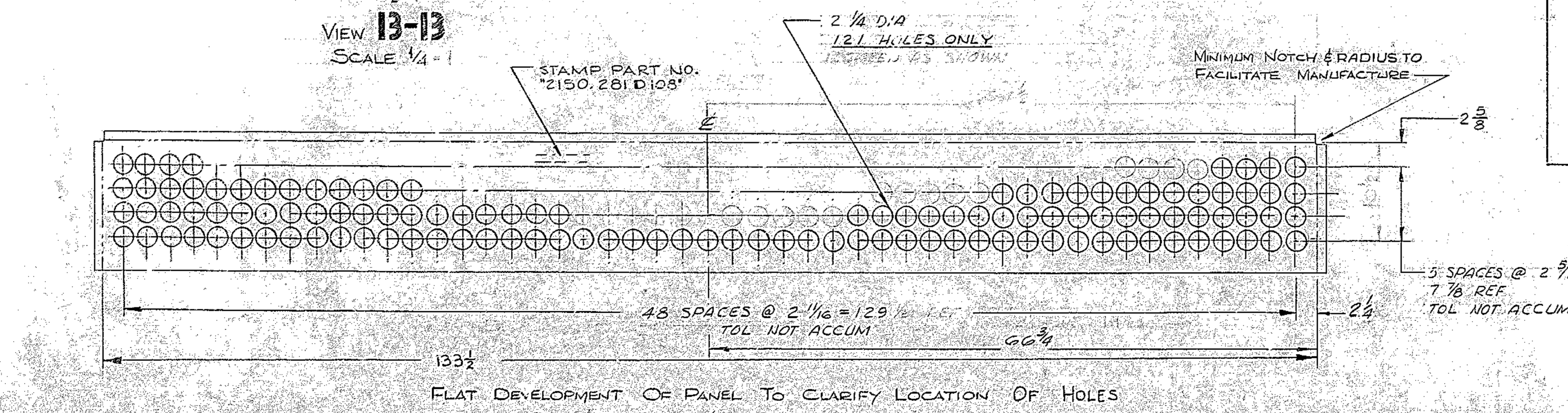
- NOTES:
- ALL DIMENSIONS ARE IN INCHES
 - THIS IS CHORDAL DIMENSION, TYP 11 PLACES, TOL NOT ACCUM.
 - FABRICATION TOLERANCE, EXCEPT AS NOTED
 UP TO 10 INCHES ± 1/16
 10 TO 15 INCHES ± 1/8
 50 INCHES AND OVER ± 1/4
 - WELD PER A.W.S. SPECIFICATION NO. D1.0-66.
 - APPLY ONE COAT OF PRIME PAINT ALL OVER PER WGC SPEC #511
 - MAX BEND RADIUS TO BE 3/32.

WESTERN GEAR CORPORATION
 CONSTRUCTION PROJECTS
 DEPARTMENT
 APPROVED FOR
 PROCUREMENT
 DATE 5 MAY 68

REF. FILE 1175

NEXT ASSY. 2150.281E102 (W.G. N102948)

FIND NO.	PART NO.	DESCRIPTION	QTY	MATERIAL	CODE IDENT
LIST OF MATERIAL (LM)					
LIMITS ON MACHINED DIMENSIONS EXCEPT AS NOTED		150 th STELLAR TELESCOPE MOUNTING			
ANGULAR = ± 1° 0'		DRAWN G.H. BOJANGE			
LINEAR:		CHECK Gene Russo 29 FEB 68			
X = ± .1 XXX = ± .010		ENGR			
XX = ± .03 FRACTIONAL = ± 1/32		MATERIAL			
BREAK ALL SHARP EDGES		SEE MATL LIST			
APPROVED		WGE 107530		SIZE CODE IDENT NO. REV	
				D 16603 2150.281 D 108 A	
		SCALE 1/4" = 1"		WT. 28 LB SHEET 1 OF 1	



FLAT DEVELOPMENT OF PANEL TO CLARIFY LOCATION OF HOLES