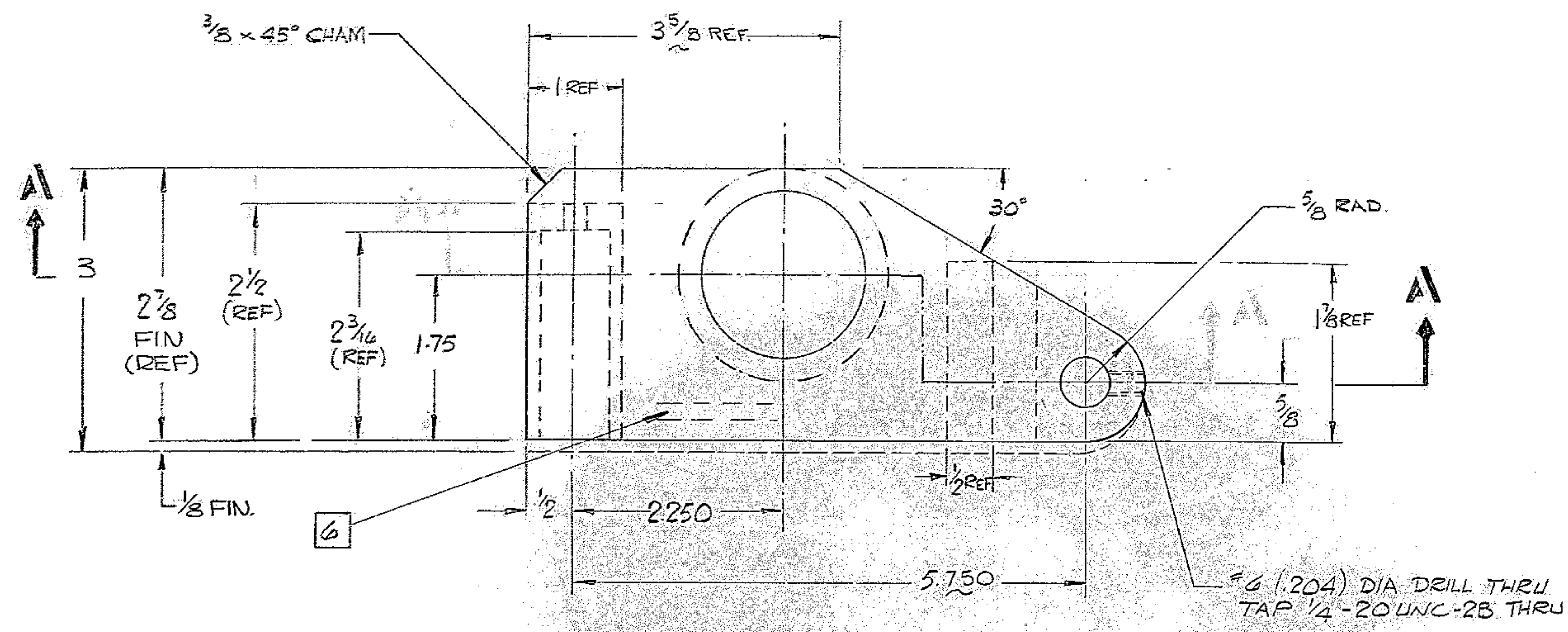


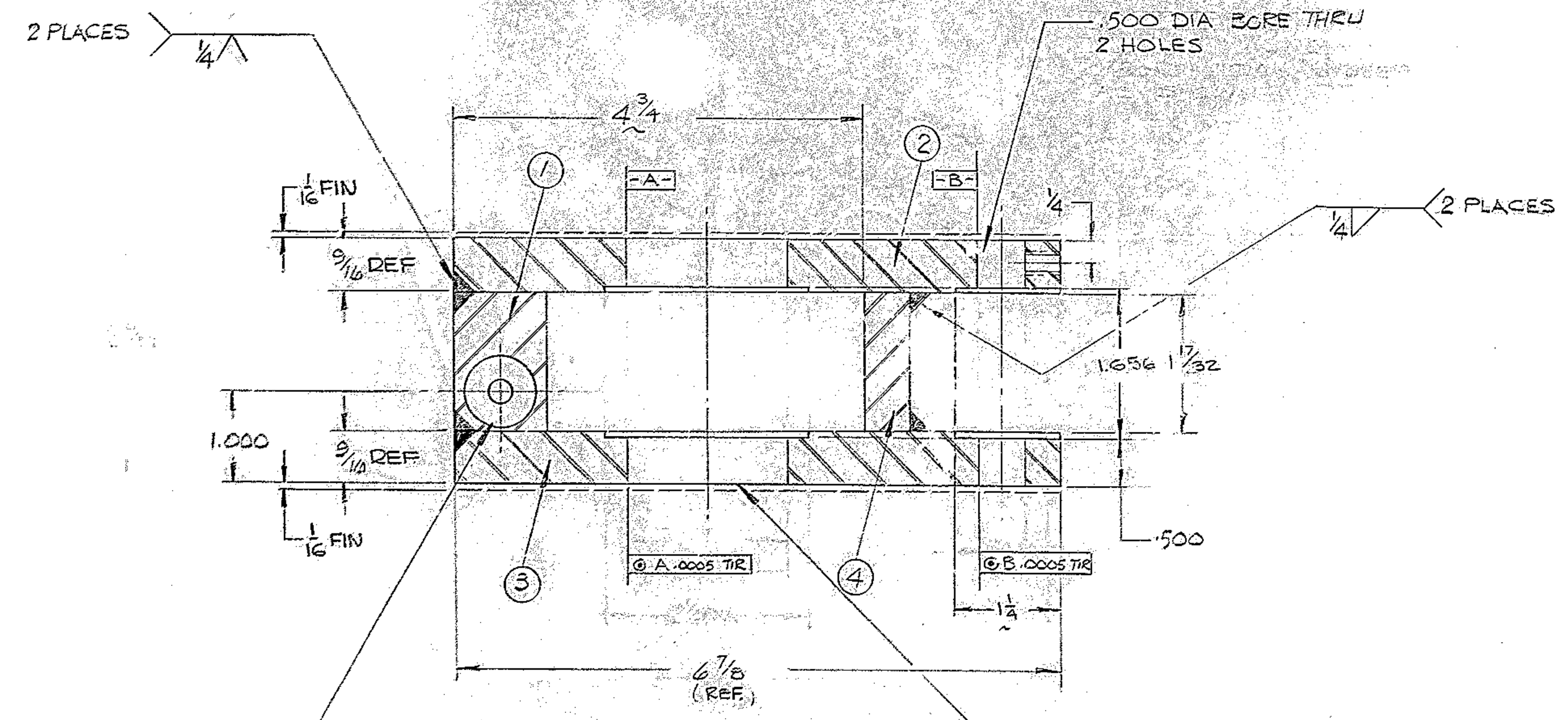
REVISIONS				
ZONE	LTR	DESCRIPTION	DATE	APPROVED
	A	REVISED PER AURA APP PRINT	10-15-68	
	B	MATL LIST CORRECTED - FIN. ALLOWANCES SHOWN - 1.7500/1.7508 BORE WAS 1.7498/1.7502	12/9/70	JW



PC NO	QTY	DESCRIPTION	MATERIAL & SPEC	ROUGH WEIGHT
1	1	PL 1 1/2 x 1 x 2 1/2	STL ASTM A-36	
2	1	PL 3 x 3/8 x 6 1/8	STL ASTM A-36	
3	1	PL 3 x 3/8 x 6 7/8	STL ASTM A-36	
4	1	PL 1 1/2 x 1/2 x 1 1/8	STL ASTM A-36	

NOTES

- ALL DIMENSIONS ARE IN INCHES.
 - WELD PER WGC SPEC NO 752 APPENDIX TI.
 - STRESS RELIEVE AFTER WELDING & BEFORE MACHINING PER WGC SPEC NO 510.
 - APPLY ONE (1) COAT OF PRIMER PAINT IMMEDIATELY AFTER STRESS RELIEF & CLEANING & BEFORE MACHINING PER WGC SPEC NO 511.
 - FABRICATION TOLERANCES EXCEPT AS NOTED.
 UP TO 10 INCHES ± 1/16
 10 TO 50 INCHES ± 1/8
 50 INCHES AND OVER ± 1/4.
- 6 STAMP PART NO 2150.281D028 APPROX WHERE SHOWN



SECTION A-A

WESTERN GEAR CORPORATION
 CONSTRUCTION PROJECTS
 DEPARTMENT
 APPROVED FOR
 PROCUREMENT
 P.G. DATE 11/21/68

NEXT ASSY: 2150.281E002 (WGN103003)

FIND NO.	PART NO.	DESCRIPTION	QTY	MATERIAL	CODE IDENT
LIST OF MATERIAL (LM)					
LIMITS ON MACHINED DIMENSIONS EXCEPT AS NOTED		150" STELLAR TELESCOPE MTG			
ANGULAR = ± 1° 0'		DRAWN J. LYNDESTER 10-20-68			
LINEAR:		CHECK			
X = ± .1 .XXX = ± .010		ENGR			
.XX = ± .03 FRACTIONAL = ± 1/32		BREAK ALL SHARP EDGES			
MATERIAL		SEE MATL LIST			
APPROVED		WGE 107794		SIZE	CODE IDENT NO.
				D 16603	2150.281D028
				REV	B
		SCALE 1/1		WT	LB SHEET 1 OF 1

WESTERN GEAR CORPORATION
 HEAVY MACHINERY DIVISION
 EVERETT, WASHINGTON
 BRACKET, CHAIN ADJUSTMENT
 IRIS COVER

REF. FIG. 1175