

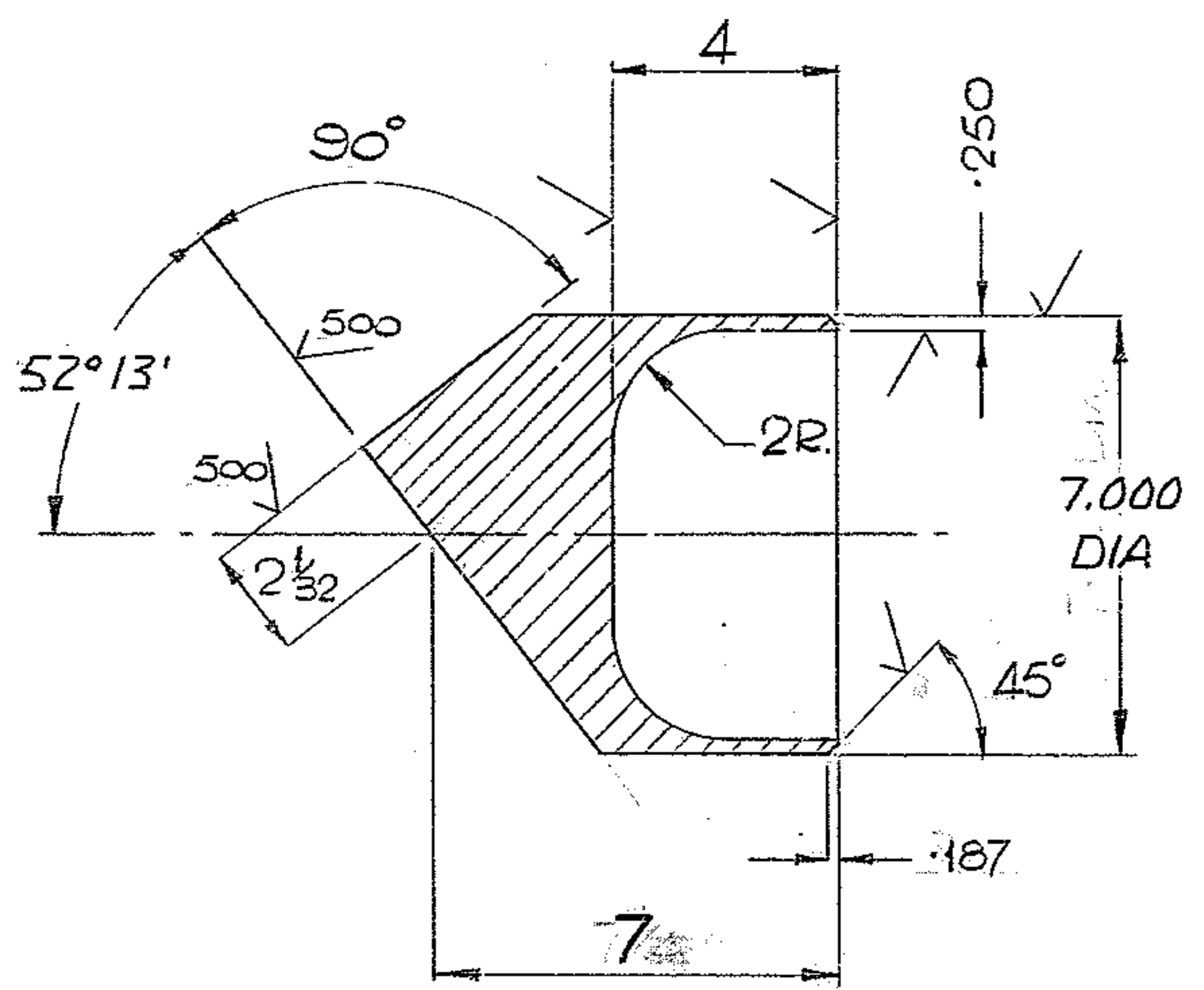
4

3

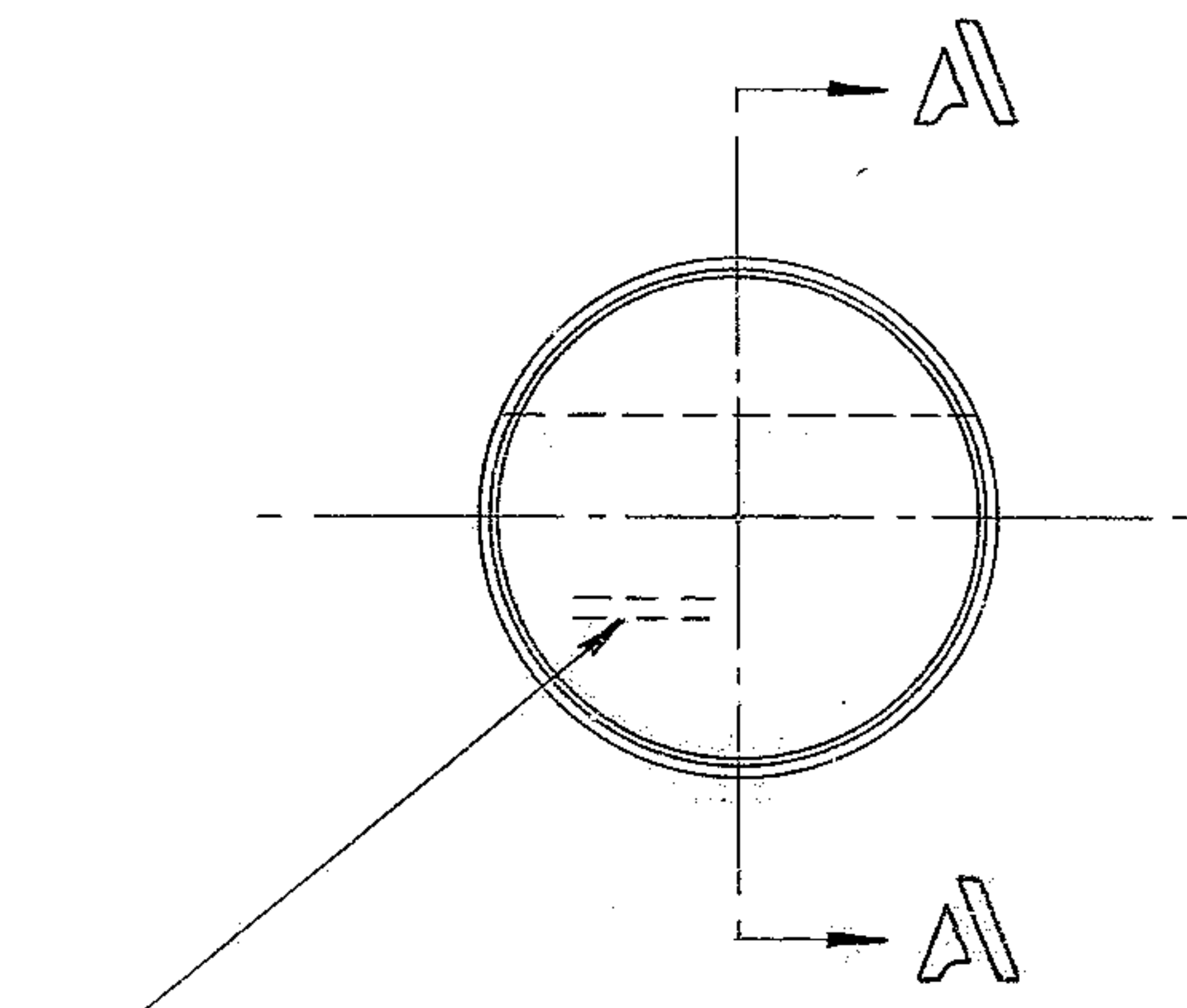
2

1

REVISIONS				
ZONE	LTR	DESCRIPTION	DATE	APPROVED
	A	REVISED PER AURA APPD CONST. PRINT DATED 6 MAY 68	7 MAY 68	

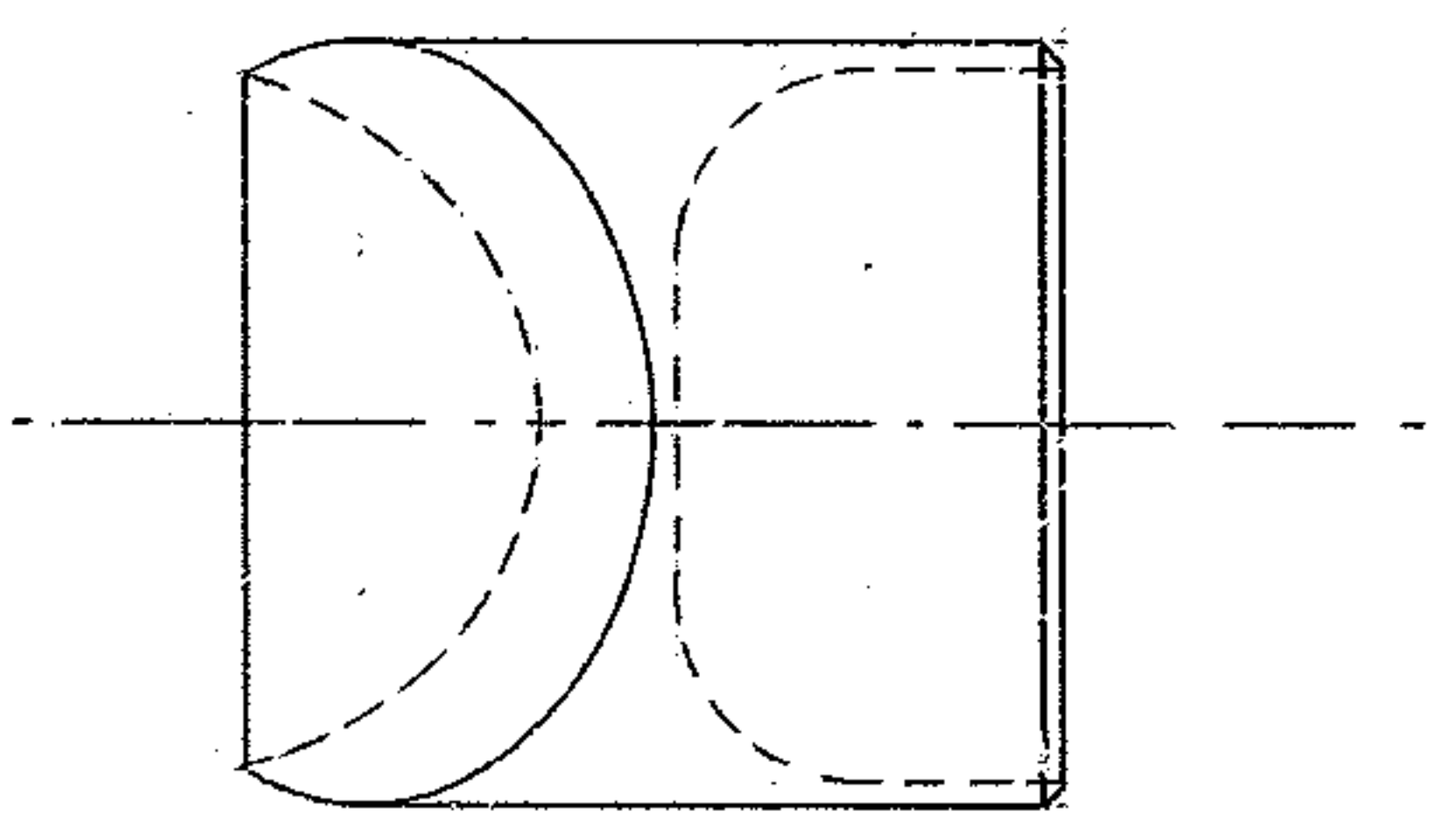


SECT. A-A



STAMP PART NO. "2150.281C106"

NOTE:
 1/ SURFACES MARKED ✓ TO HAVE 125/ FINISH EXCEPT AS NOTED.
 2/ ALL DIMENSIONS IN INCHES.



REF. FILE 1175

NEXT ASSY: 2150.281 E 105 (WGN 102862)

FIND NO.	PART NO.	DESCRIPTION	QTY	MATERIAL	CODE IDENT
LIST OF MATERIAL (LM)					
LIMITS ON MACHINED DIMENSIONS EXCEPT AS NOTED ANGULAR = ± 1° 0' LINEAR: X = ± .1 .XXX = ± .010 .XX = ± .03 FRACTIONAL = ± 1/32		150 th STELLAR TELESCOPE MOUNTING		HEAVY MACHINERY DIVISION EVERETT, WASHINGTON	
BREAK ALL SHARP EDGES		DRAWN G.H. 2-8-68		TIP,	
MATERIAL 7/4 DIA x 8 7/8 STL. AISI C-1018.		CHECK <i>[Signature]</i> 7-29-68		CENTER SECTION & LWR. GIRDER	
		ENGR		SIZE	CODE IDENT NO.
		WGD 107316		C 16603	2150.281C106
		APPROVED		REV	A
				SCALE 1/4	WT 34 LB SHEET 1 OF 1

WESTERN GEAR CORPORATION
 CONSTRUCTION PROJECTS
 DEPARTMENT
 APPROVED FOR
 PROCUREMENT
J.L. DATE 8 MAY 68