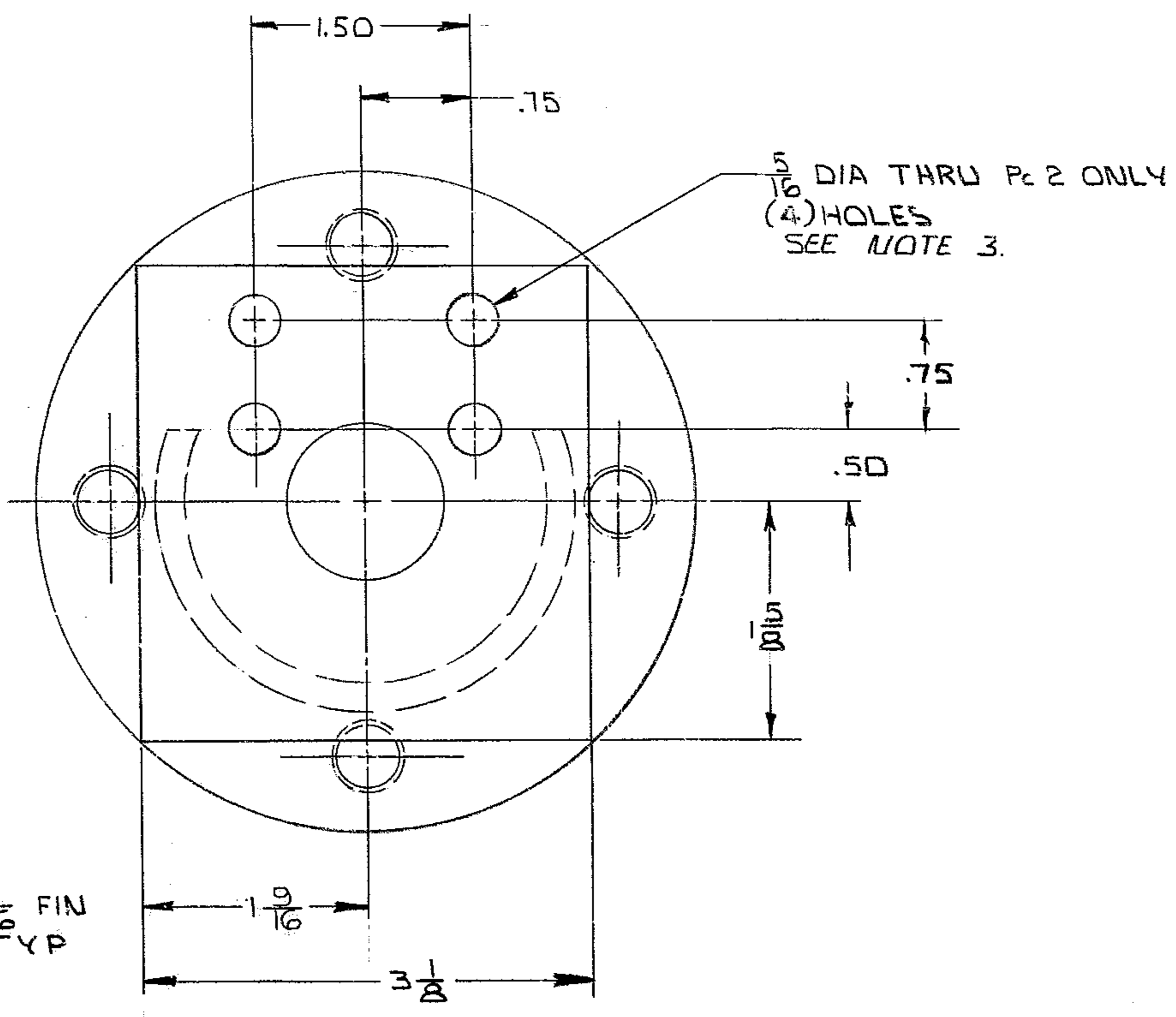
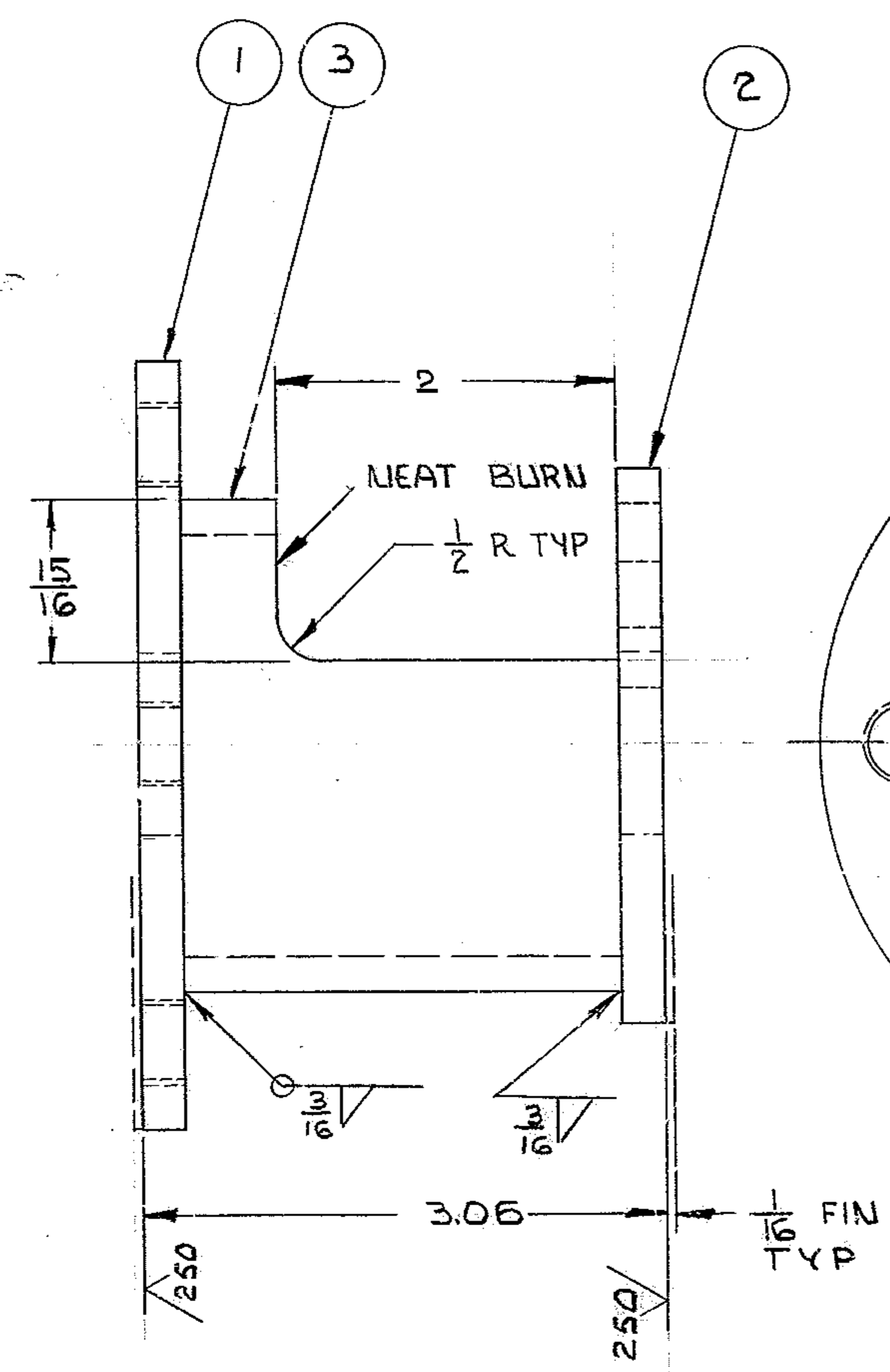
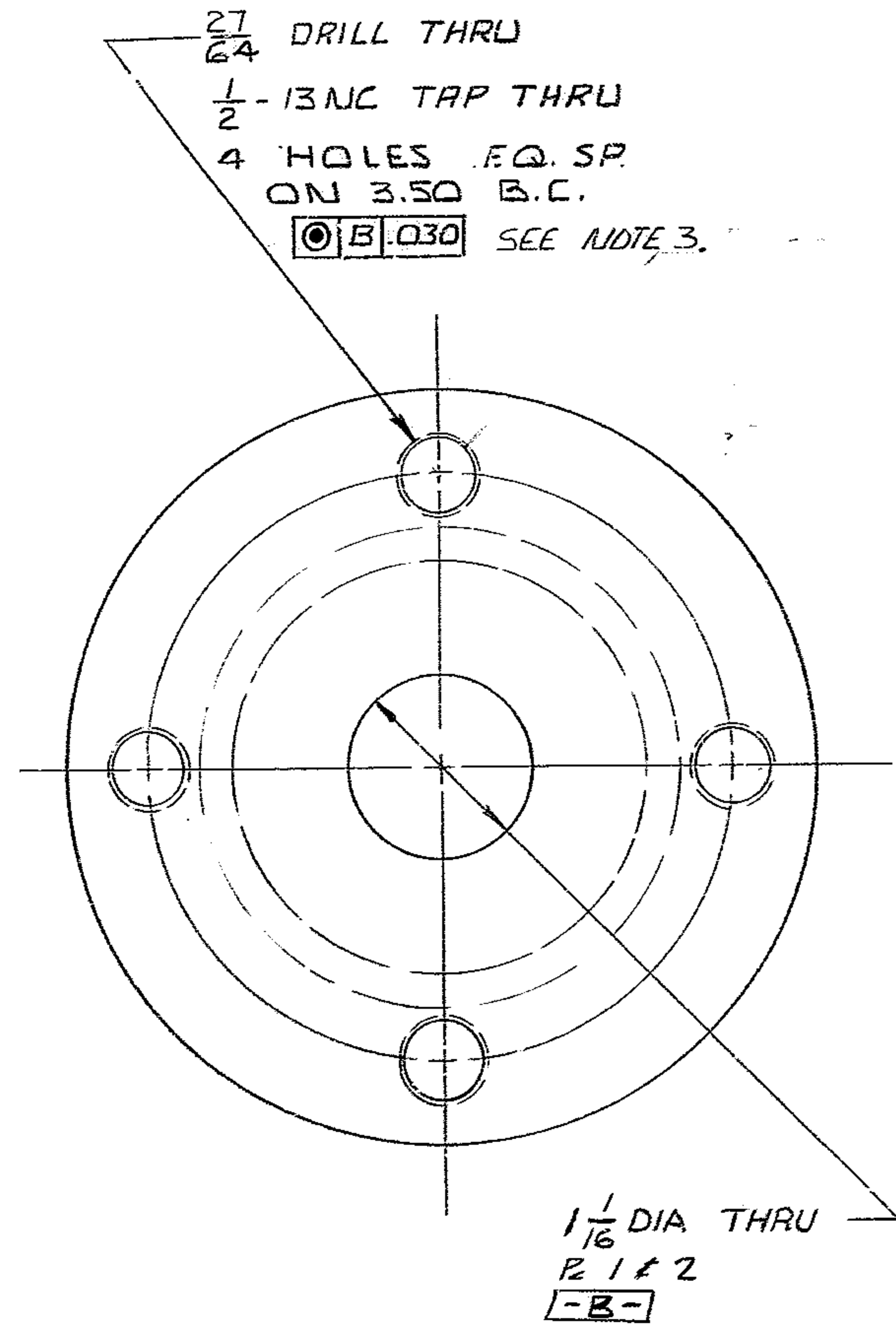


REVISIONS				
ZONE	LTR	DESCRIPTION	DATE	APPROVED



- NOTES:
- FABRICATION TOLERANCES $\pm 1/16$.
 - APPLY ONE COAT OF PRIME PAINT IMMEDIATELY AFTER CLEANING PER WGC SPEC. 510.
 - HOLE ORIENTATION BETWEEN TOP AND BOTTOM FLANGE MUST BE AS SHOWN.

REF. FILE 1175

FIND NO.	PART NO.	DESCRIPTION	QTY	MATERIAL	CODE IDENT
3		2 1/2 DIA X 2 9/16 LG PIPE		SCHED 40 ASTM A-53 STL	
2		3/8 X 3 1/8 X 3 1/4	1	ASTM A-36 STL	
1		3/8 X 4 1/2 DIA	1	ASTM A-36 STL	

LIST OF MATERIAL (LM)

LIMITS ON MACHINED DIMENSIONS EXCEPT AS NOTED ANGULAR = $\pm 1^\circ$ LINEAR: .X = $\pm .1$.XXX = $\pm .010$.XX = $\pm .03$ FRACTIONAL = $\pm 1/32$ BREAK ALL SHARP EDGES	DRAWN LDS 6-3-71 CHECK ENGR SKILES 6-3-71	WESTERN GEAR CORPORATION HEAVY MACHINERY DIVISION EVERETT, WASHINGTON
	MATERIAL SEE L/M	
APPROVED	W.G. C302832	SIZE C CODE IDENT NO. 16603 2150.281C094
SCALE FULL WT		LB SHEET 1 OF 1