

4

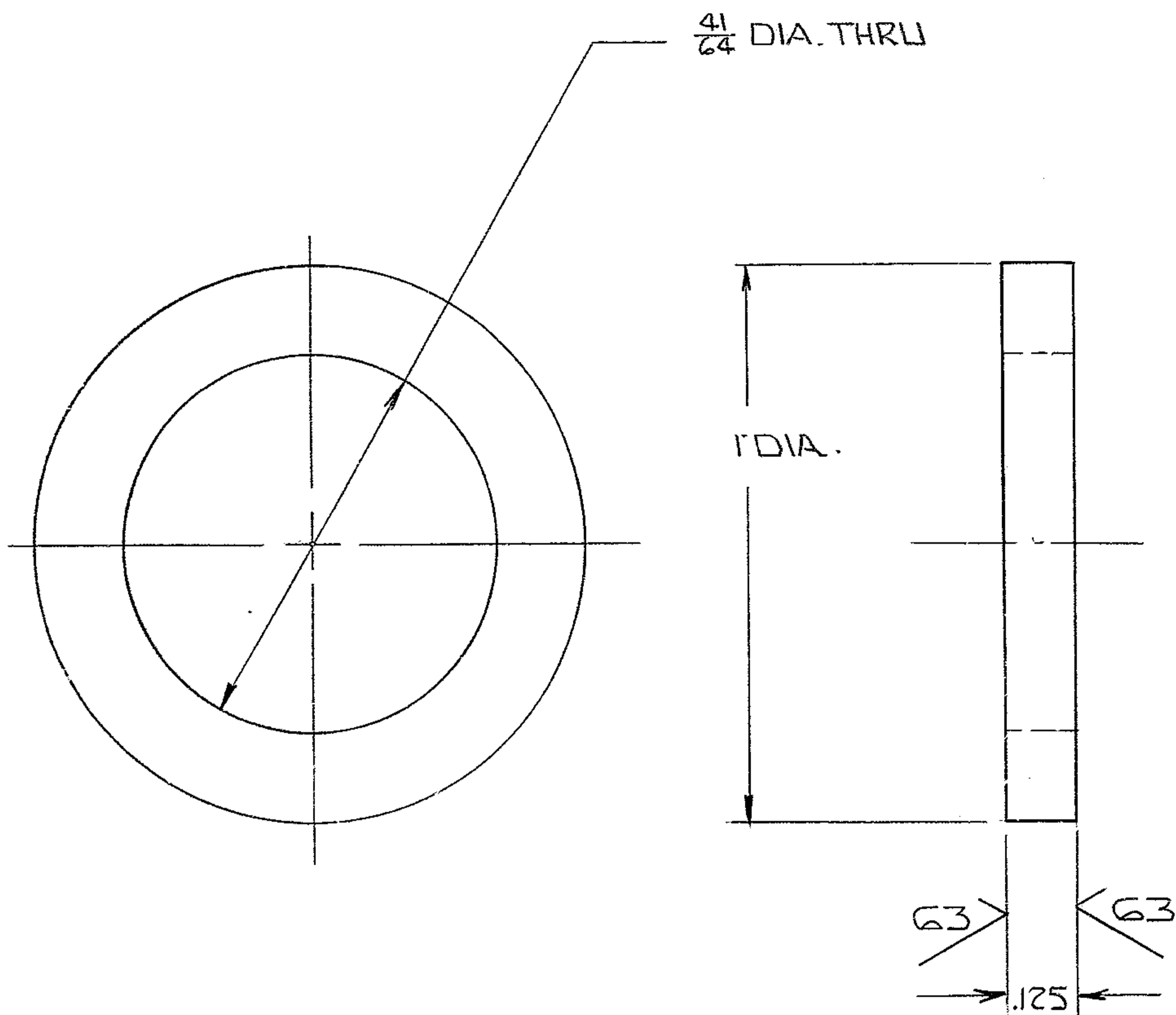
3

2

1

THIS DOCUMENT CONTAINS INFORMATION PROPRIETARY TO WESTERN GEAR CORPORATION. ALL DESIGN, MANUFACTURING, REPRODUCTION, USE, PATENT AND SALES RIGHTS REGARDING THE SAME ARE HEREBY EXPRESSLY RESERVED BY WESTERN GEAR CORPORATION. THIS DOCUMENT IS SUBMITTED FOR REFERENCE PURPOSES ONLY AND SHALL NOT BE DISCLOSED TO ANY UNAUTHORIZED PERSON OR INCORPORATED INTO ANY OTHER PROJECT.

REVISIONS				
ZONE	LTR	DESCRIPTION	DATE	APPROVED
	A	RELEASED FOR MANUFACTURE	6-24-70	



NOTES

1. ALL DIMENSIONS ARE IN INCHES.
2. TAG WITH PART NO 215.281C092

REF. FILE 1175

NEXT ASSY: 215D.281E002 (W.G.C. DWG NO. N103002)

WESTERN GEAR CORPORATION
 CONSTRUCTION PROJECTS
 DEPARTMENT
 APPROVED FOR
 PROCUREMENT
Gene Rums DATE 6/24/70

FIND NO.	PART NO.	DESCRIPTION	QTY	MATERIAL	CODE IDENT
LIST OF MATERIAL (LM)					
LIMITS ON MACHINED DIMENSIONS EXCEPT AS NOTED ANGULAR = ± 1° 0'		150 IN. STELLAR TELESCOPE MTG.	WESTERN HEAVY MACHINERY DIVISION GEAR CORPORATION EVERETT, WASHINGTON		
LINEAR: .X = ± .1 .XXX = ± .010 .XX = ± .03 FRACTIONAL = ± 1/32		DRAWN/RONNING 6-17-70 CHECK E. D. G. 6-17-70	SPACER, SPROCKET, CENTER SECTION		
BREAK ALL SHARP EDGES		ENGR			
MATERIAL R 1" DIA X 1/8 STL. AISI C1018		WGC 301438	SIZE C	CODE IDENT NO. 16603	215D.281C092
APPROVED			SCALE	WT	REV A
				LB	SHEET OF

WGC DWG NO. C 301 438