

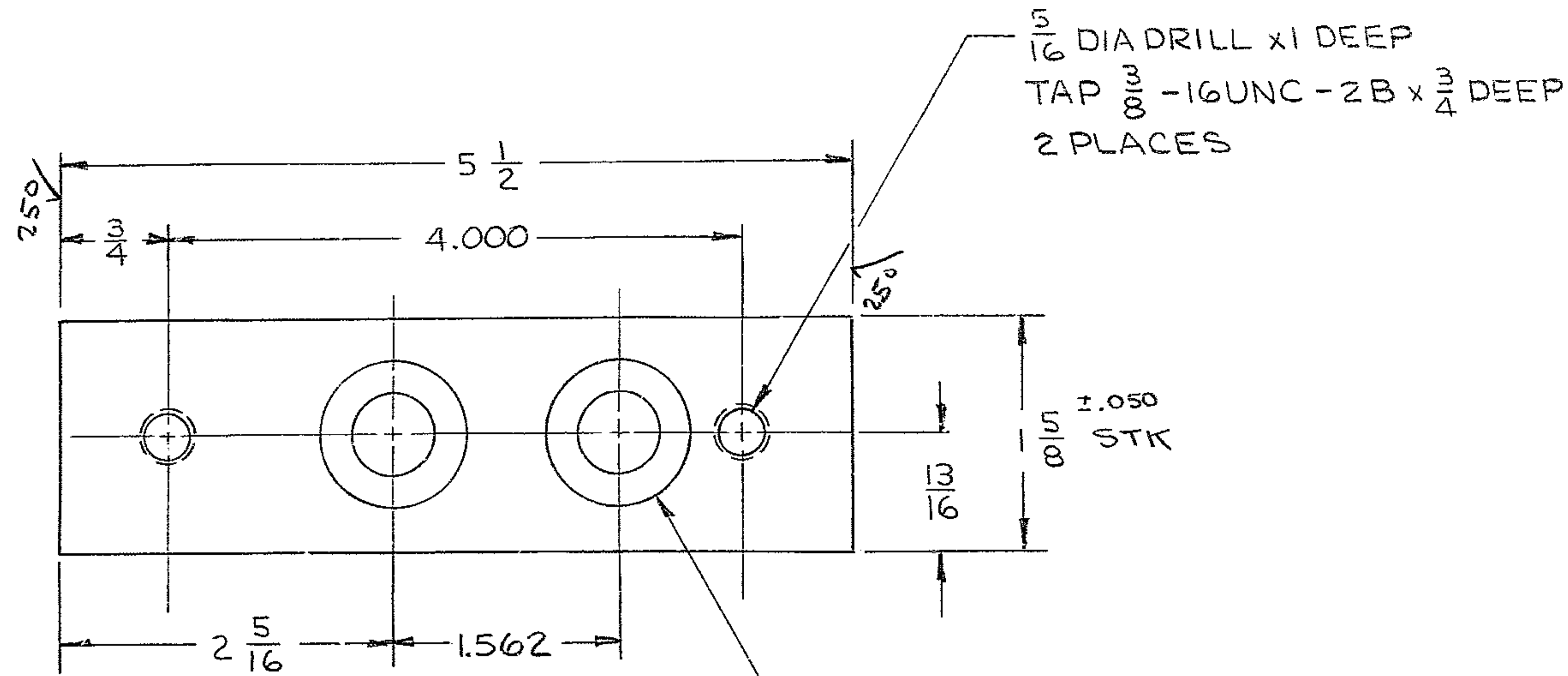
4

3

2

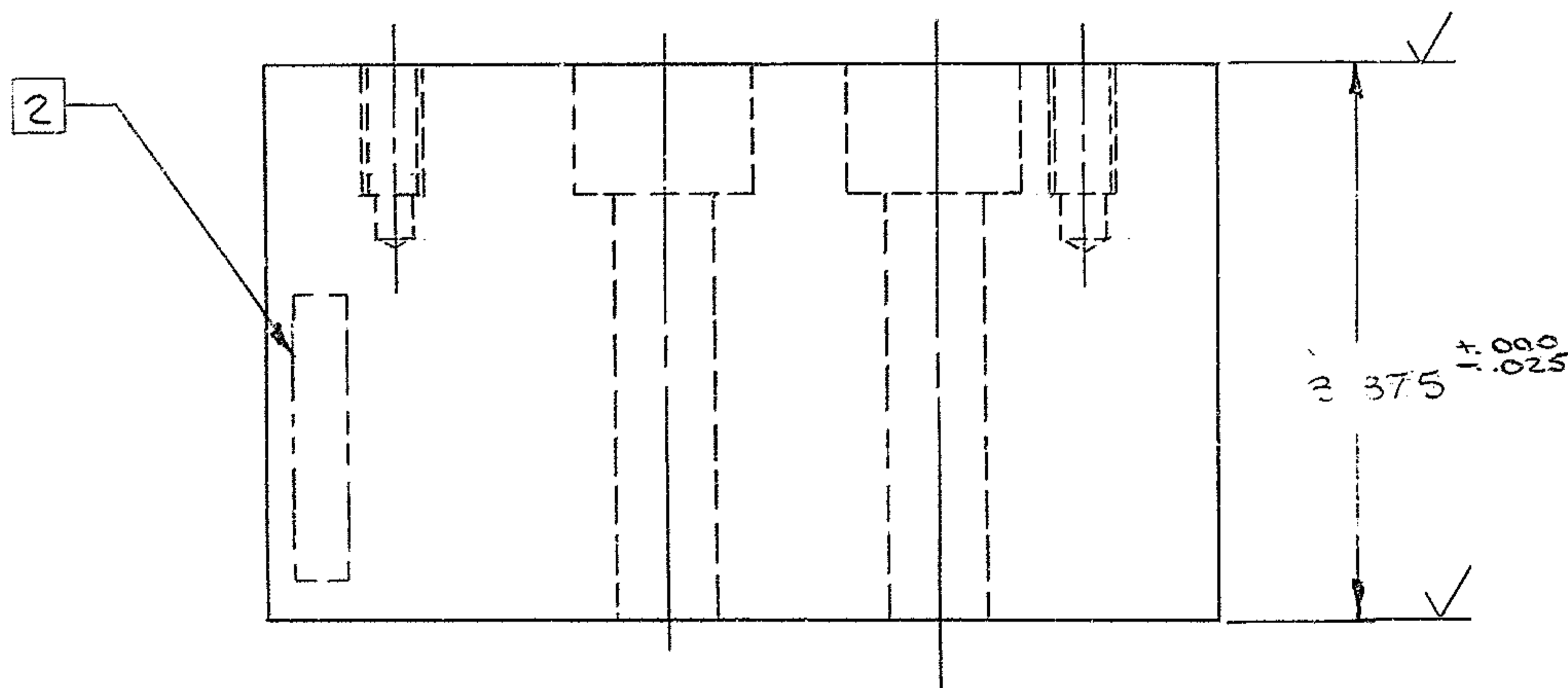
1

REVISIONS				
ZONE	LTR	DESCRIPTION	DATE	APPROVED
B3	A	3.375 WAS 3.437	10-27-68	
	A	APP'D. FOR CONST. PER AURA PRINT	"	
	B	ADDED ±.050 .025 WAS .010	7-20-73	LDS



NOTES:

1. ALL DIMENSION ARE IN INCHES.
2. STAMP PART NO. 2150.281C042 APPROX WHERE SHOWN
3. SURFACE MARKED ✓ TO BE 125 ✓ EXCEPT AS NOTED
4. APPLY ONE (1) COAT PRIME PAINT ALL OVER PRIOR MACHINING PER W.G.C. SPEC 511.



NEXT ASSY: 2150.281E002 (W.G.N 103002)

REF. 1175

FIND NO.	PART NO.	DESCRIPTION	QTY	MATERIAL	CODE IDENT
LIST OF MATERIAL (LM)					
LIMITS ON MACHINED DIMENSIONS EXCEPT AS NOTED ANGULAR = ± 1° 0'		150 IN STELLAR TELESCOPE MOUNTING		HEAVY MACHINERY DIVISION EVERETT, WASHINGTON	
LINEAR: .X = ± .1 .XX = ± .010 .XX = ± .03 FRACTIONAL = ± 1/32		DRAWN <i>R. Strong</i>	5-23-68	SPACER, FILLW BLOCK IRIS COVER	
BREAK ALL SHARP EDGES		CHECK <i>SW</i>	8-15-69		
MATERIAL PL 3 1/2 x 1 5/8 x 1/6 STL ASTM-A36		ENGR		W.G.D 107529 SIZE CODE IDENT NO. REV C 16603 2150.281C042 B	
		APPROVED			
		SCALE 1/1	WT	LB SHEET 1 OF 1	

Handwritten notes and signatures:
 P.G. 11/1/68