

5

4

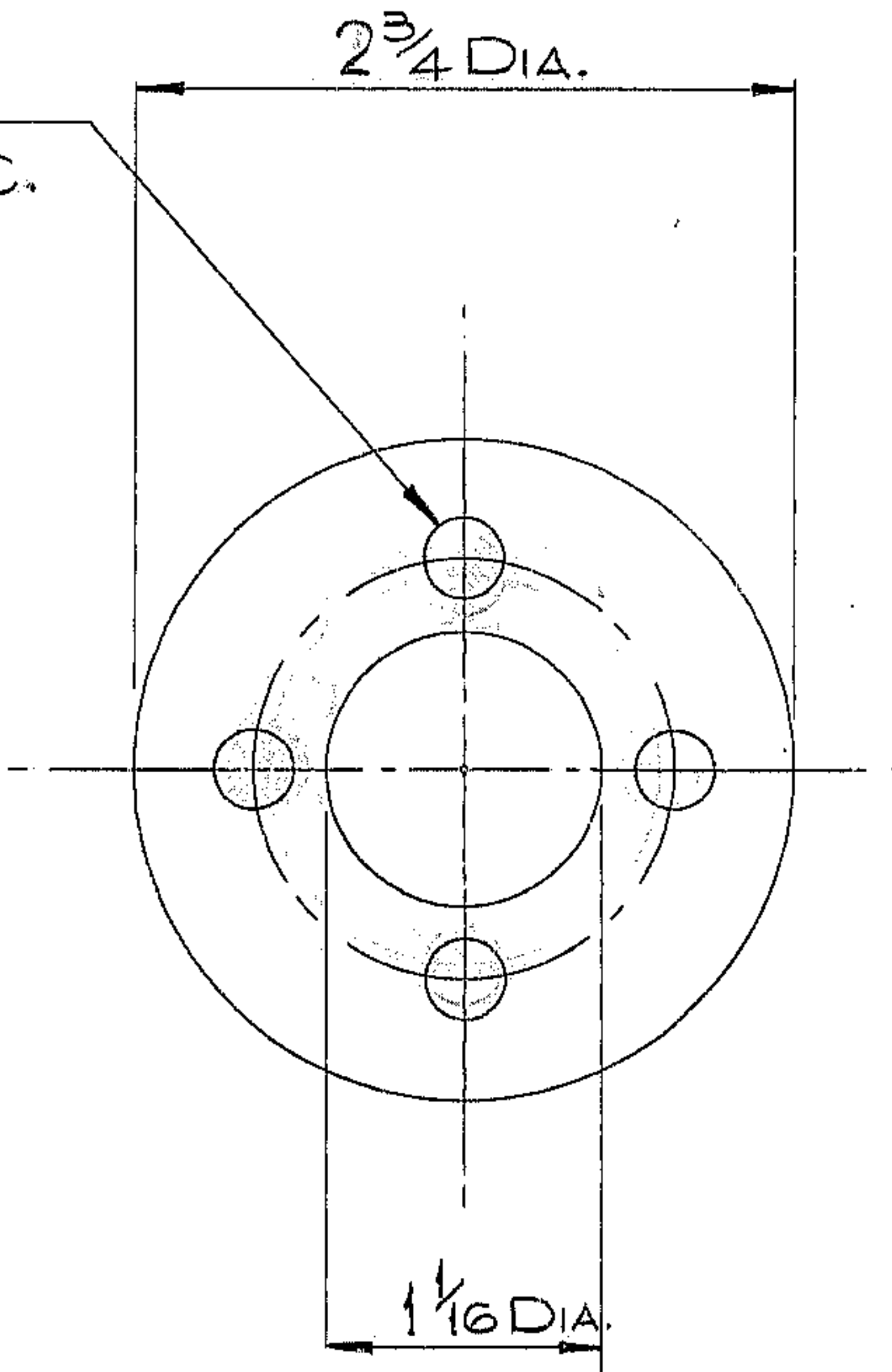
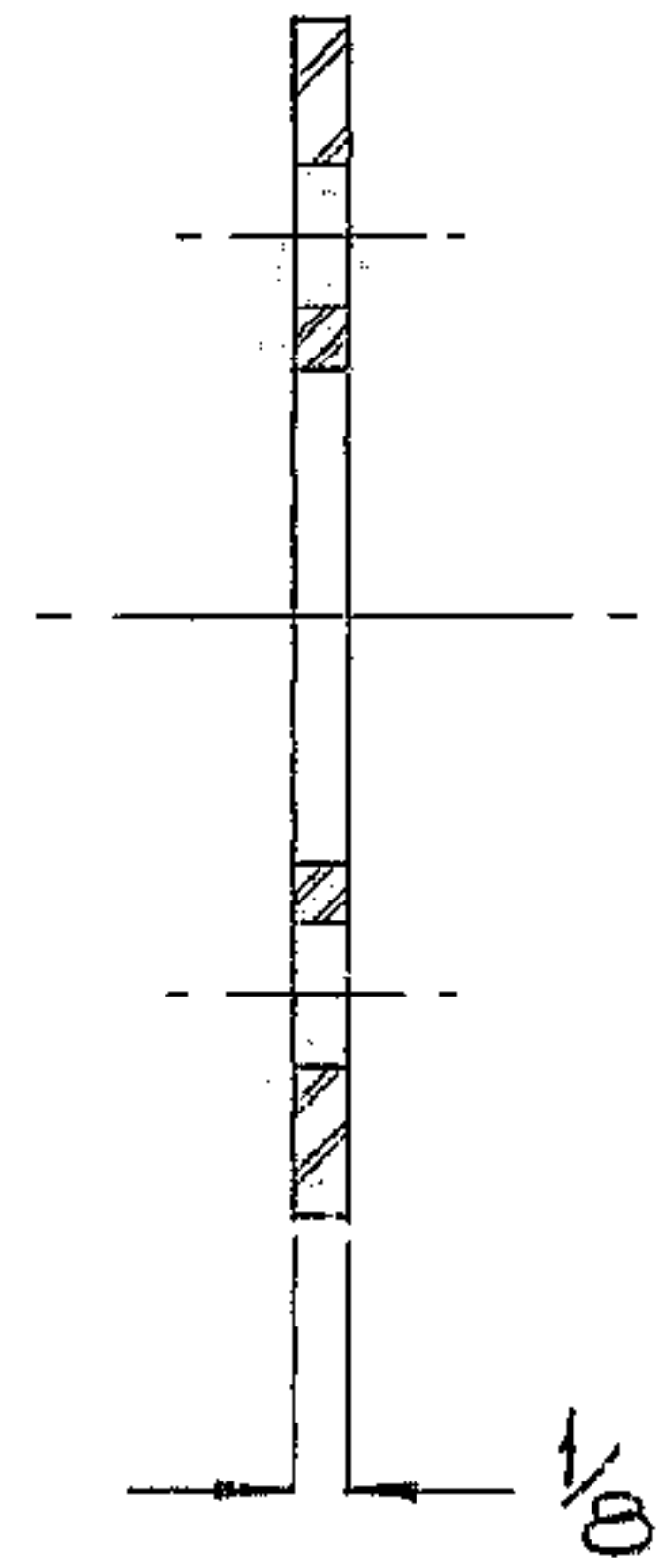
3

2

1

REVISIONS				
ZONE	LTR	DESCRIPTION	DATE	APPROVED
	A	REVISED PER AURA APPD CONST PRINT DATED 6 MAY 68	7 MAY 68	

5/16 DIA. - 4 HOLES
EQ. SP. ON 1.750 D.B.C.
TOL. NOT ACCUM.



NOTES:

1. ALL DIMENSIONS ARE IN INCHES.
2. MATL: STL, ASTM A-36
R 2 3/4 DIA x 1/8 THK.
3. TAG PART NO. "2150.281B112"

WESTERN GEAR CORPORATION
CONSTRUCTION PROJECTS
DEPARTMENT
APPROVED FOR
PROCUREMENT

J.R. DATE 8 MAY 68

NEXT ASSY: 2150.281C113 (WGD 107301)
2150.281E102 (WGN 102948)

REF. FILE 1175

LIMITS ON MACHINED DIMENSIONS EXCEPT AS NOTED ANGULAR ± 1° 0' LINEAR .X = ± .1 .XX = ± .03 .XXX = ± .010 FRACTIONAL ± 1/32 BREAK ALL SHARP EDGES	150" STELLAR TELESCOPE MTG.	western GEAR CORPORATION HEAVY MACHINERY DIVISION EVERETT, WASHINGTON		
	DRAWN R. HOLC SHUH CHECK <i>[Signature]</i> 2 29 68 ENGR	PLATE - CLAMPING - DRAIN TUBE.		
WGC 112304. APPROVED	SIZE B	CODE IDENT NO. 16603	2150.281B112	REV A
SCALE 1/1		WT. — LB SHEET 1 OF 1		