

5

4

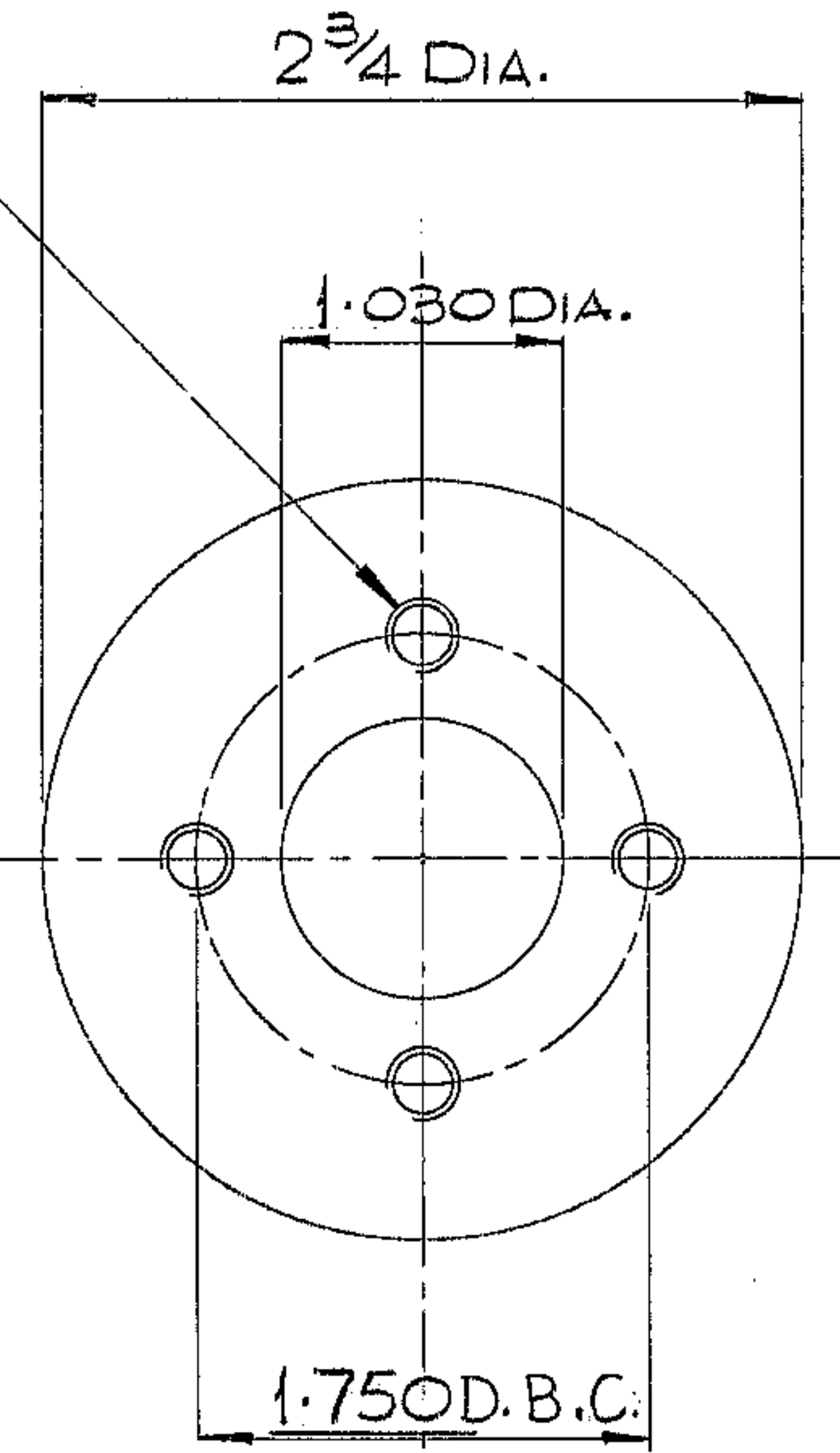
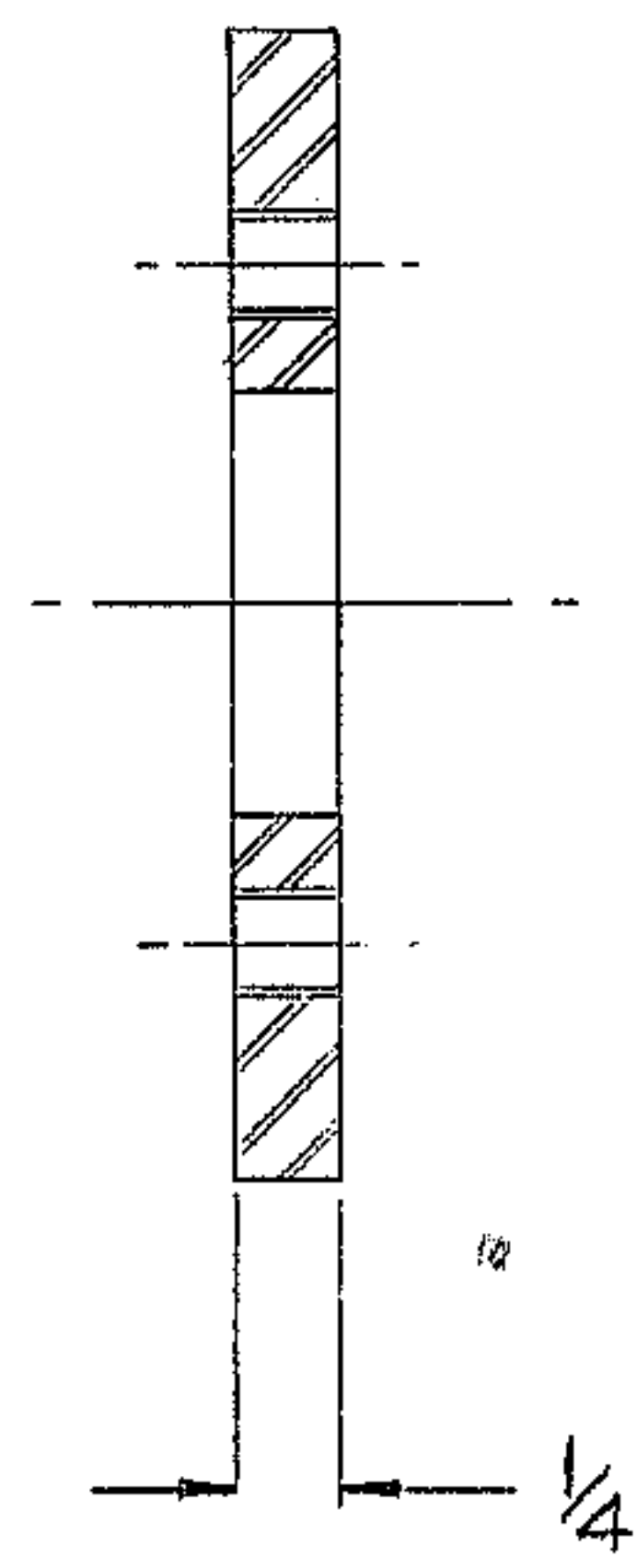
3

2

1

REVISIONS				
ZONE	LTR	DESCRIPTION	DATE	APPROVED
	A	REVISED PER AURA APPD CONST PRINT DATED 6 MAY 68	7 MAY 68	

NO. 7 DRILL & 1/4 - 20 UNC - 2B
TAP THRU - 4 HOLES
EQ. SPACED AS SHOWN
TOLERANCE NOT ACCUM.



NOTES:

- ALL DIMENSIONS ARE IN INCHES.
- MATL: STL, ASTM A-7 OR EQ.
Ø 2 3/4 DIA x 1/4 THK
- TAG PART NO. "2150.281B111"

WESTERN GEAR CORPORATION
CONSTRUCTION PROJECTS
DEPARTMENT
APPROVED FOR
PROCUREMENT

J.R. DATE 8 MAY 68

NEXT ASSY: 2150.281D117 (W.G.E 107557)
2150.281D110 (W.G.E 107532)

REF. FILE 1175

LIMITS ON MACHINED DIMENSIONS EXCEPT AS NOTED
ANGULAR ± 1° 0'
LINEAR
.X = ± .1
.XX = ± .03
.XXX = ± .010
FRACTIONAL ± 1/32

BREAK ALL SHARP EDGES

150" STELLAR TELESCOPE MTG.
DRAWN G.H.
CHECK *[Signature]* 2-29-68
ENGR
WGC 122309
APPROVED

WESTERN GEAR CORPORATION HEAVY MACHINERY DIVISION
EVERETT, WASHINGTON

PLATE - LOCATING - DRAIN TUBE.

SIZE	CODE IDENT NO.	REV
B	16603 2150.281B114	A
SCALE 1/1	WT. — LB	SHEET 1 OF 1