

5

4

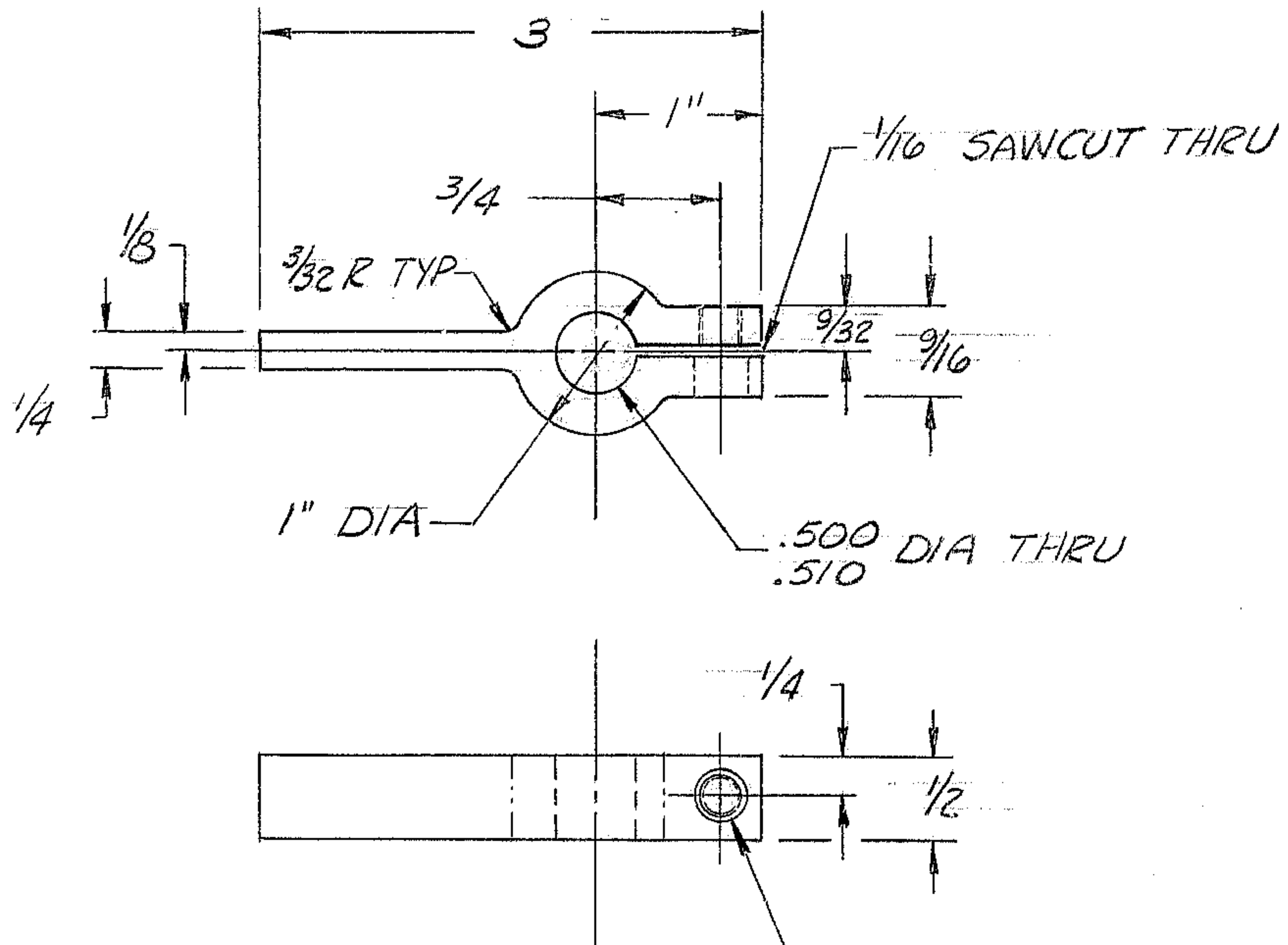
3

2

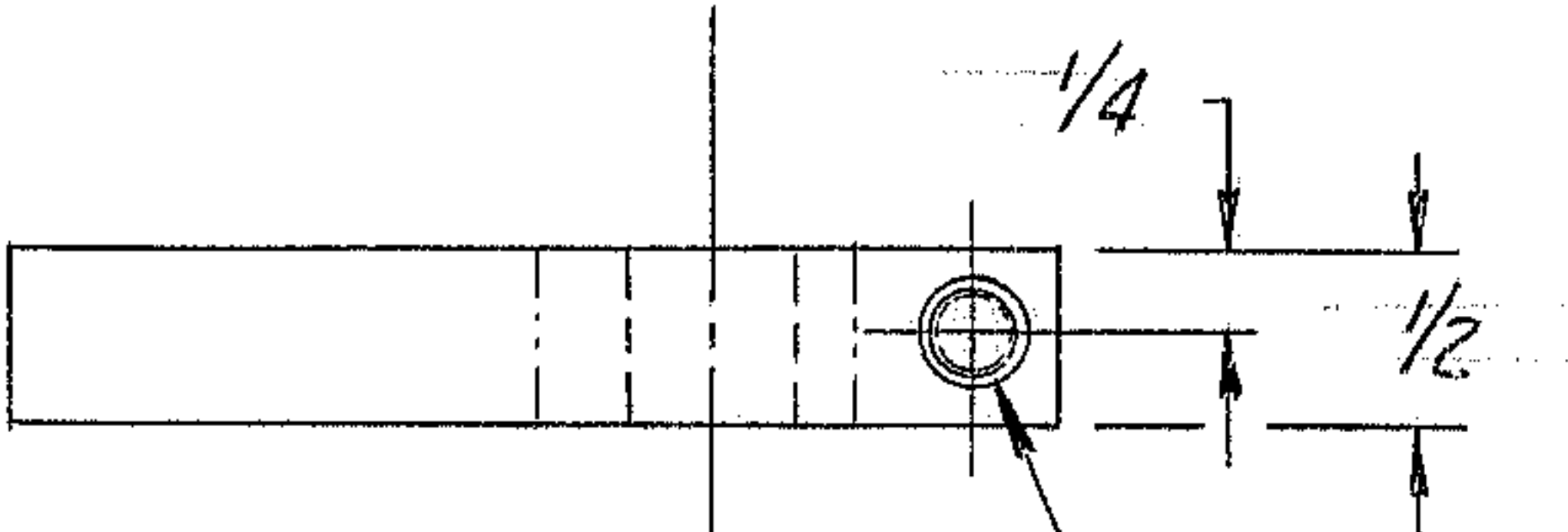
1

REVISIONS

ZONE	LTR	DESCRIPTION	DATE	APPROVED
A		APPROVED PER AURA CONSTRUCTION PRINT 9-20-68	10-25-68	



1" DIA
 .500 DIA THRU
 .510



#7 (.201) DIA THRU
 1/4-20 UNC-2B FAR SIDE
 5/16 DIA DRILL NEAR SIDE

NOTES:
 1. ALL DIMENSIONS ARE IN INCHES
 2. TAG WITH PART NO. 2150.281B046
 3. MATL: BAR 1" x 1/2 x 3 STL A151 C1018

REF. FILE 1175

WESTERN GEAR CORPORATION
 CONSTRUCTION PROJECTS
 DEPARTMENT
 APPROVED FOR
 PROCUREMENT
 P.G. DATE 12/1/68

NEXT ASSY: 2150.281E002 (W.G.N 102852)

LIMITS ON MACHINED DIMENSIONS EXCEPT AS NOTED ANGULAR ± 1° 0' LINEAR .X = ± .1 .XX = ± .03 .XXX = ± .010 FRACTIONAL ± 1/32 BREAK ALL SHARP EDGES	150 IN. STELLAR TELESCOPE MTG	HEAVY MACHINERY DIVISION EVERETT, WASHINGTON
	DRAWN <i>W. McCarty</i> CHECK <i>L.W.M.</i> ENGR	
W.G.C 112703	SIZE B CODE IDENT NO. 16603 2150.281B046	REV A SCALE 1/1 WT. LB SHEET 1 OF 1