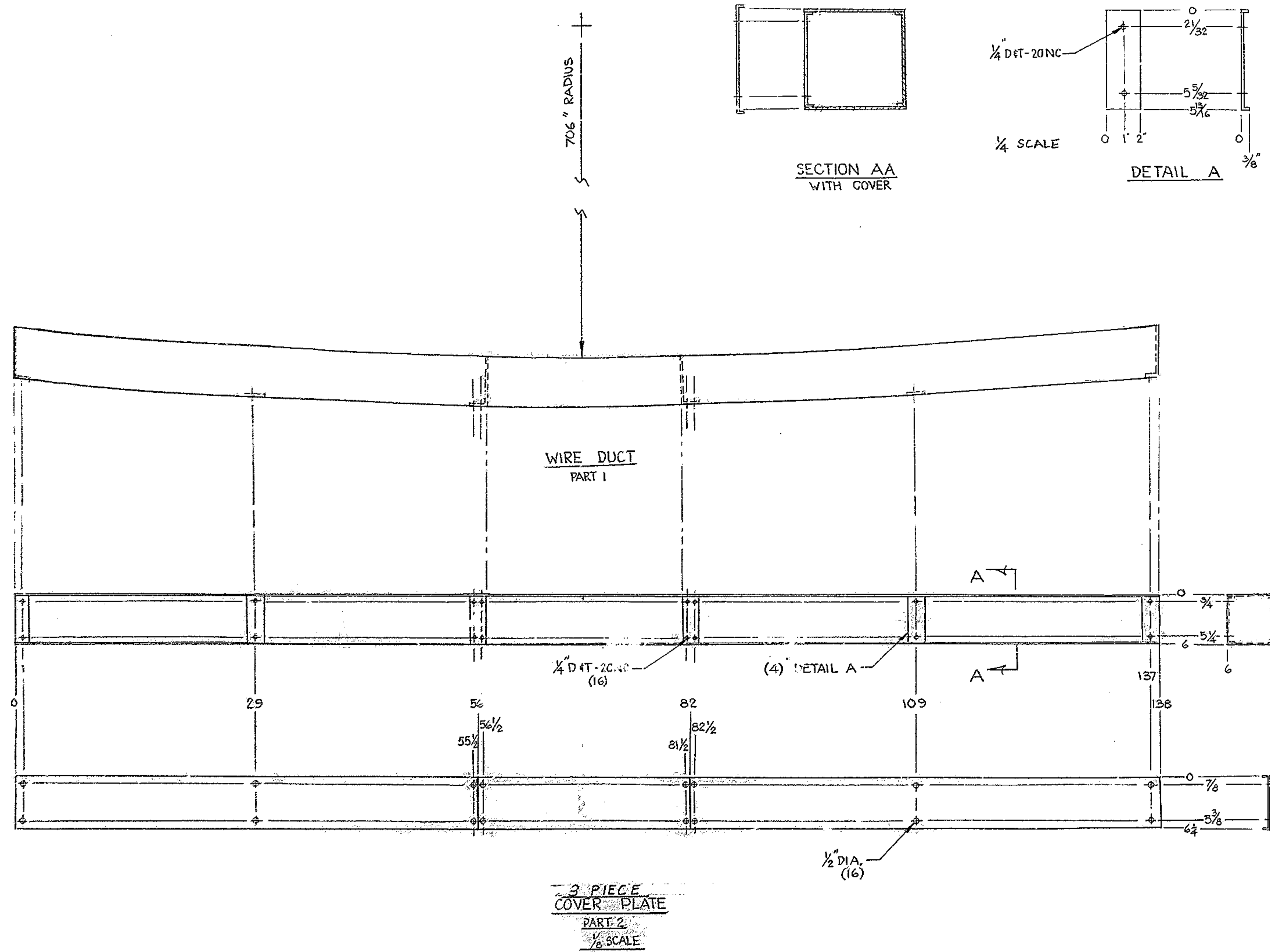


THIS DOCUMENT CONTAINS INFORMATION PROPRIETARY TO WESTERN GEAR CORPORATION. ALL DESIGN, MANUFACTURING, REPRODUCTION, USE, PATENT AND SALES RIGHTS REGARDING THE SAME ARE HEREBY EXPRESSLY RESERVED BY WESTERN GEAR CORPORATION. THIS DOCUMENT IS SUBMITTED FOR REFERENCE PURPOSES ONLY AND SHALL NOT BE DISCLOSED TO ANY UNAUTHORIZED PERSON OR INCORPORATED INTO ANY OTHER PROJECT.

REVISIONS				
ZONE	LTR	DESCRIPTION	DATE	APPROVED
	A	REVISED END & COVER OF WIRE DUCT	7-20-71	
	B	AS BUILT 2289	M.C. 7-19-79	JLB



NOTE:
1. FINISH: PARTS WILL BE CLEANED THOROUGHLY AND PAINTED WITH RED PRIMER.

NEXT ASSY: 2150.280E002 (WGN 102B4A) (P/N 54)

FIND NO.	PART NO.	DESCRIPTION	QTY	MATERIAL	CODE IDENT
	2	WIRE DUCT COVER PLATE	3	14 GA CRS	
	1	WIRE DUCT	1	14 GA. CRS	

LIMITS ON MACHINED DIMENSIONS EXCEPT AS NOTED		DRAWN		WESTERN GEAR CORPORATION		HEAVY MACHINERY DIVISION EVERETT, WASHINGTON	
ANGULAR	± 1° 0'	[Signature]		WIRE DUCT - SOUTH CENTER SECTION ASSEMBLY			
LINEAR:		CHECK					
.X	± .1	ENGR					
.XX	± .03	FRACTIONAL ± 1/32		MATERIAL			
BREAK ALL SHARP EDGES				D 303142			
APPROVED				D 16603			
SCALE 1/8" = 1" WT				SIZE CODE IDENT NO. 2150.280-D020			
LB				SHEET 1 OF 1			

REF. FILE 1215