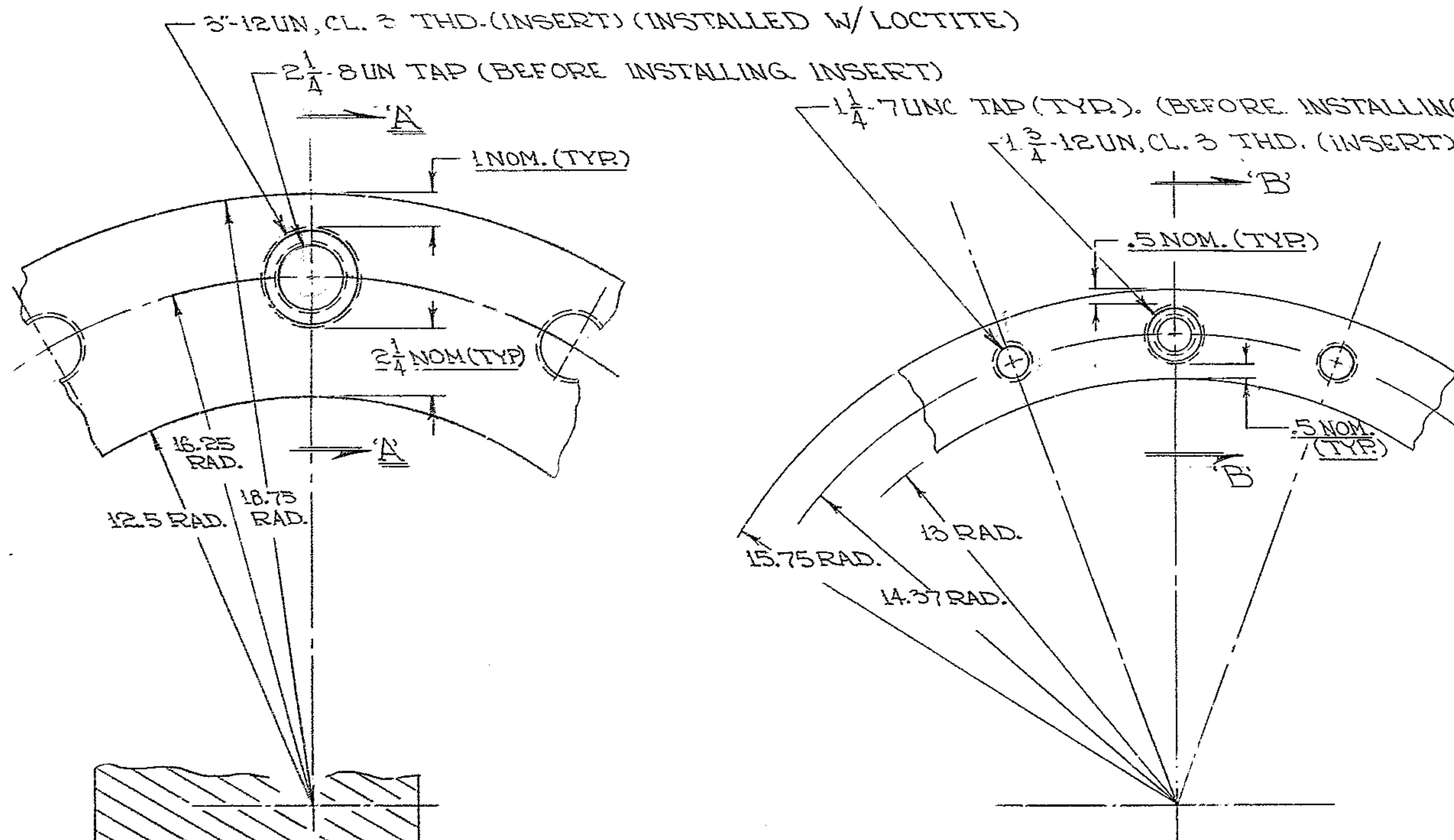
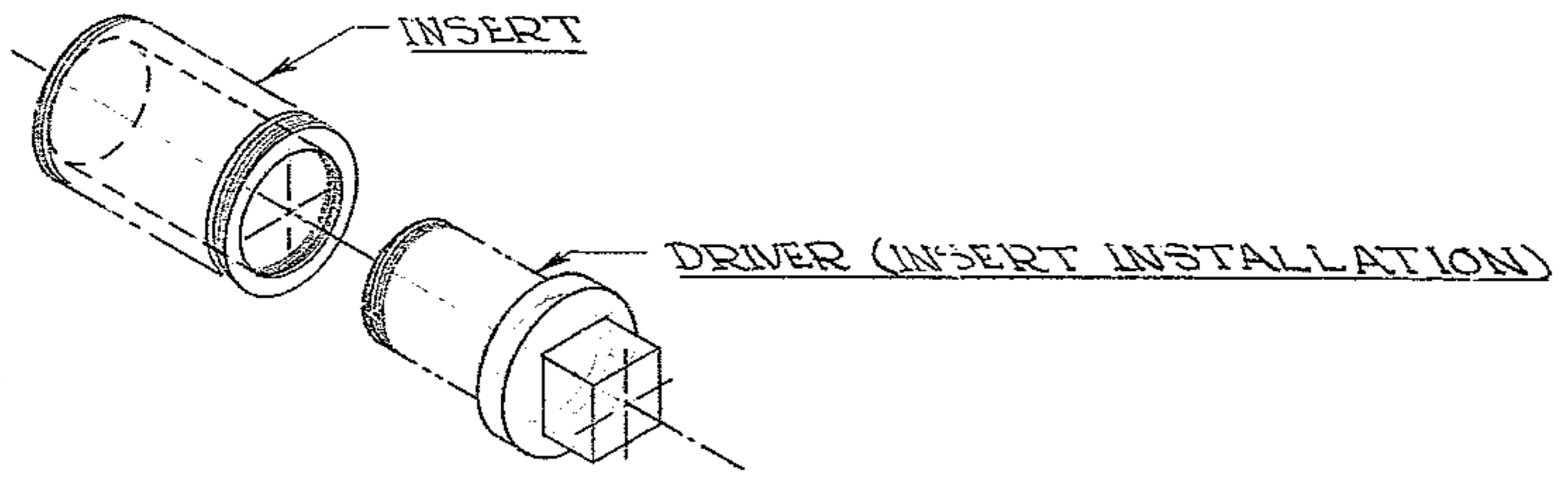
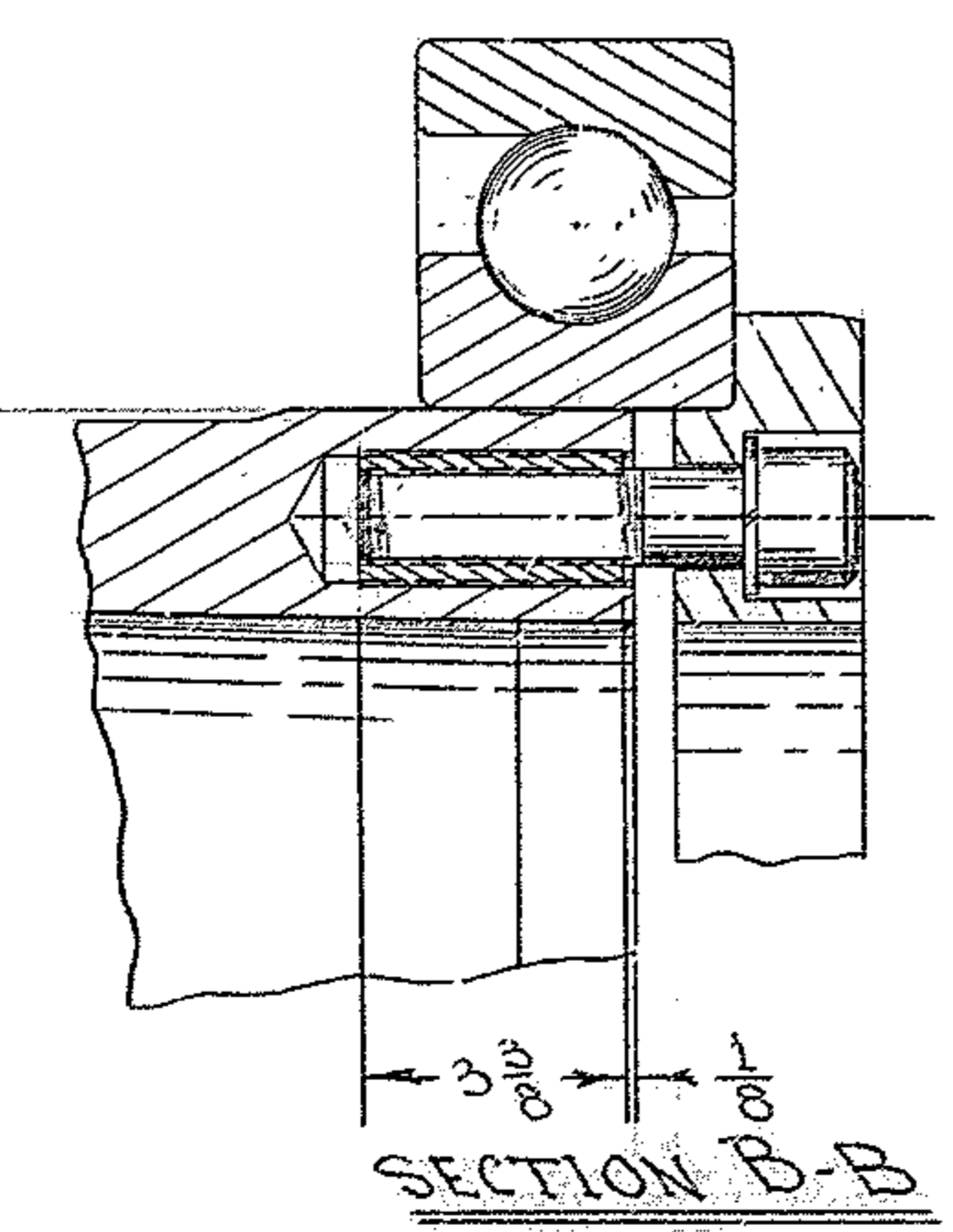
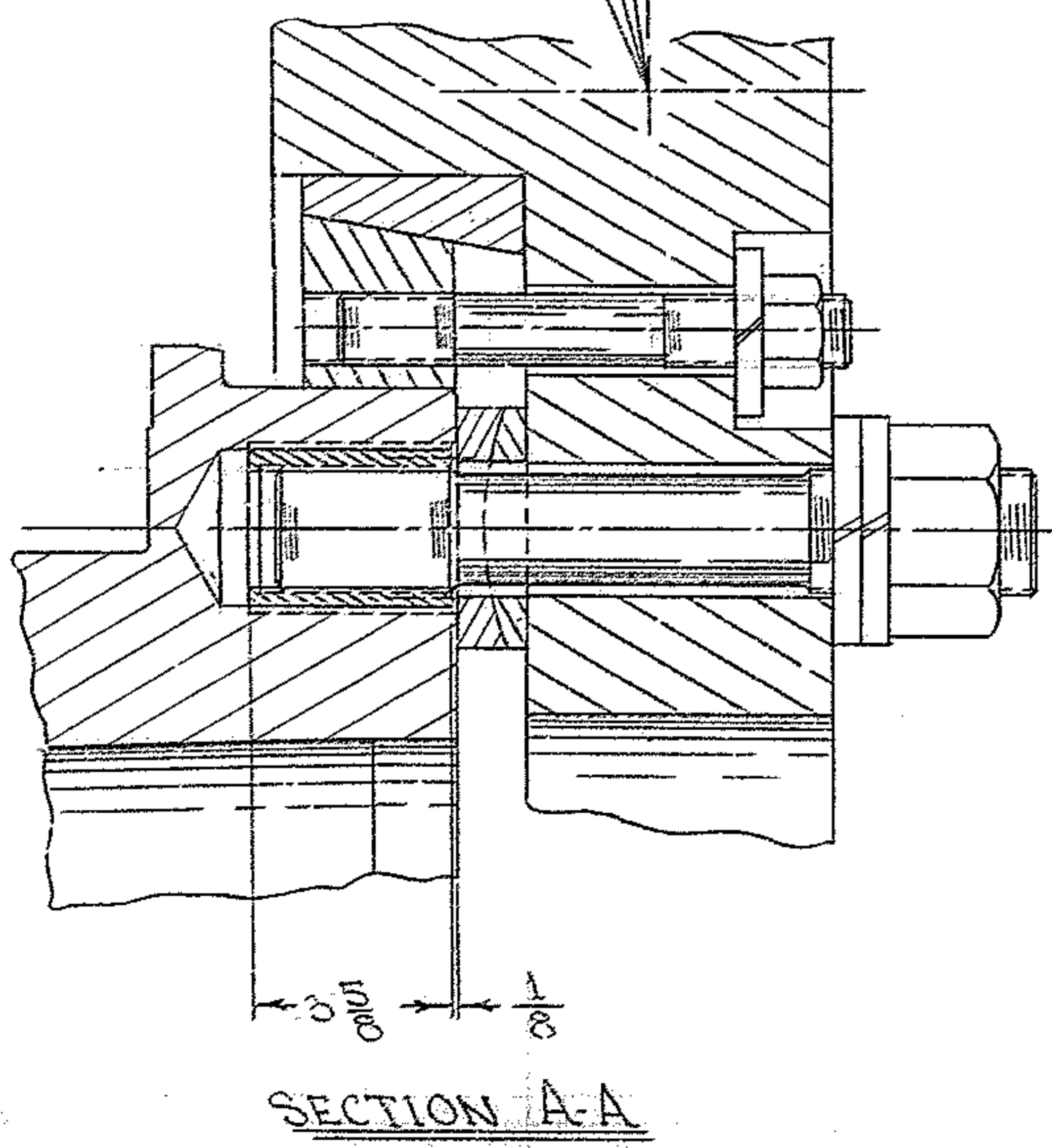


THIS DOCUMENT CONTAINS INFORMATION PROPRIETARY TO WESTERN GEAR CORPORATION. ALL DESIGN, MANUFACTURING, REPRODUCTION, USE, PATENT AND SALES RIGHTS REGARDING THE SAME ARE HEREBY EXPRESSLY RESERVED BY WESTERN GEAR CORPORATION. THIS DOCUMENT IS SUBMITTED FOR REFERENCE PURPOSES ONLY AND SHALL NOT BE DISCLOSED TO ANY UNAUTHORIZED PERSON OR INCORPORATED INTO ANY OTHER PROJECT.

REVISIONS				
ZONE	LTR	DESCRIPTION	DATE	APPROVED
C1	A	REVD COL. B-B OF HOLE MOD. TABLE: AXLE 1 WAS (2) AXLE 4 WAS (0)	2/4/71	JW
C1	B	No OF HOLES TO BE MODIFIED CHGD	7-21-71	
C1	C	No OF HOLES TO BE MODIFIED CHGD	10-5-71	
D		ADDED FLRA DWG NO.	3-1-73	LDS



NO. OF HOLES TO BE MODIFIED			
AXLE S/N	MODIFICATION A-A	MODIFICATION B-B	
1	2	2	
2	0	0	
3	0	0	
4	0	2	



REF. FILE 1174

- 1) REF. DWG. # 2150.280E.010 (WGN-102,953) "AXLE, D.A. BRG.- CENTER SECTION"
- 2) REF. DWG. # 2150.004E.002 (WGN-102,851) "KPNO TELESCOPE MTG. ASSY."

FIND NO.	PART NO.	DESCRIPTION	QTY	MATERIAL	CODE IDENT
LIST OF MATERIAL (LM)					
LIMITS ON MACHINED DIMENSIONS EXCEPT AS NOTED ANGULAR = ± 1° 0'			Western HEAVY MACHINERY DIVISION GEAR CORPORATION EVERETT, WASHINGTON		
LINEAR: X = ± .1 .XXX = ± .010 .XX = ± .03 FRACTIONAL = ± 1/32			DRAWN DILLON 4-13-70 CHECK ENGR MAT'L. THICKNESS DIAGRAM AXLE, D.A. BRG., THREAD INSERTS		
BREAK ALL SHARP EDGES					
MATERIAL			WGC 301146 APPROVED		
SIZE		CODE IDENT NO.	REV		
C		16603	2150.280C024		D
SCALE 1/4		WT	LB	SHEET 1 OF 1	