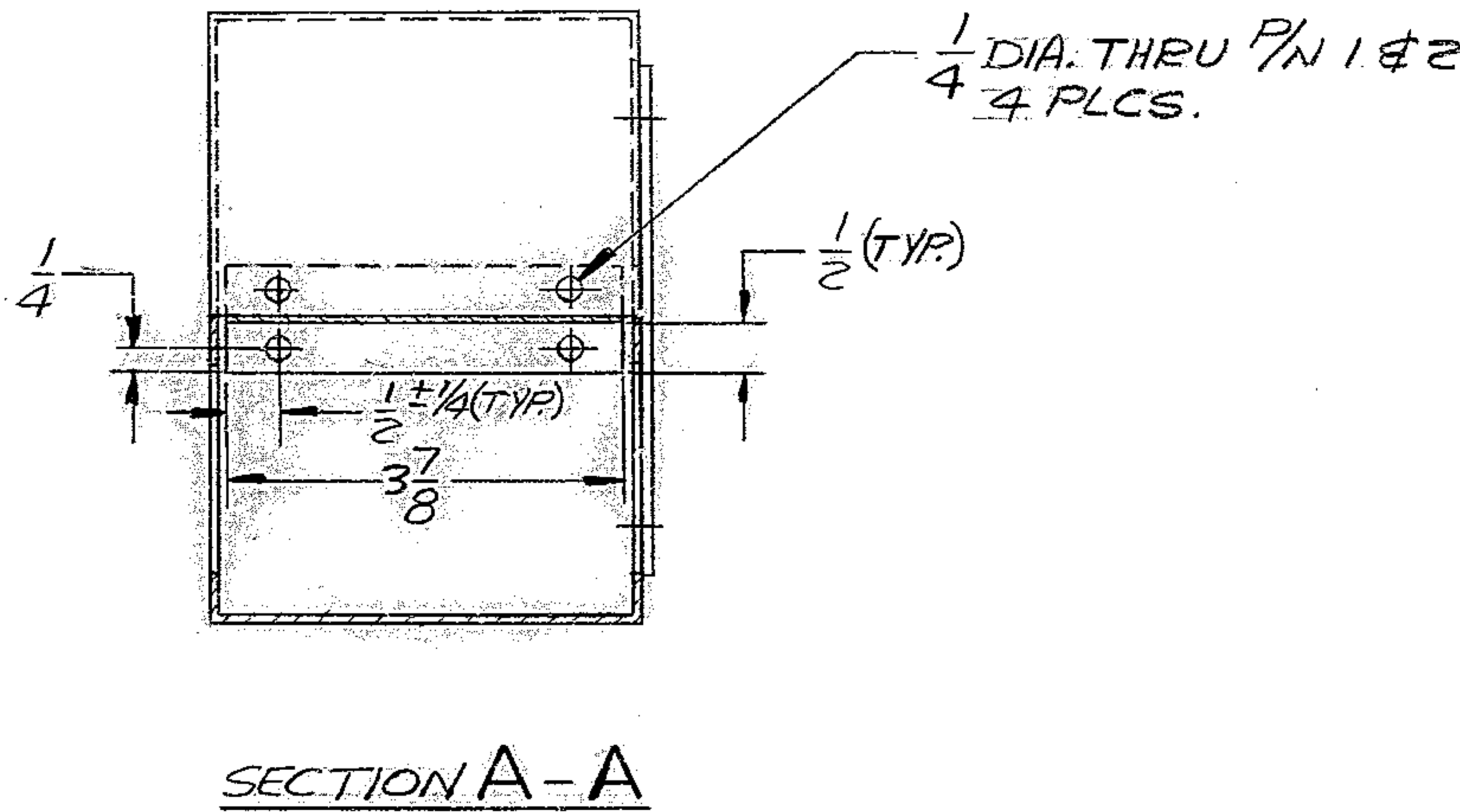
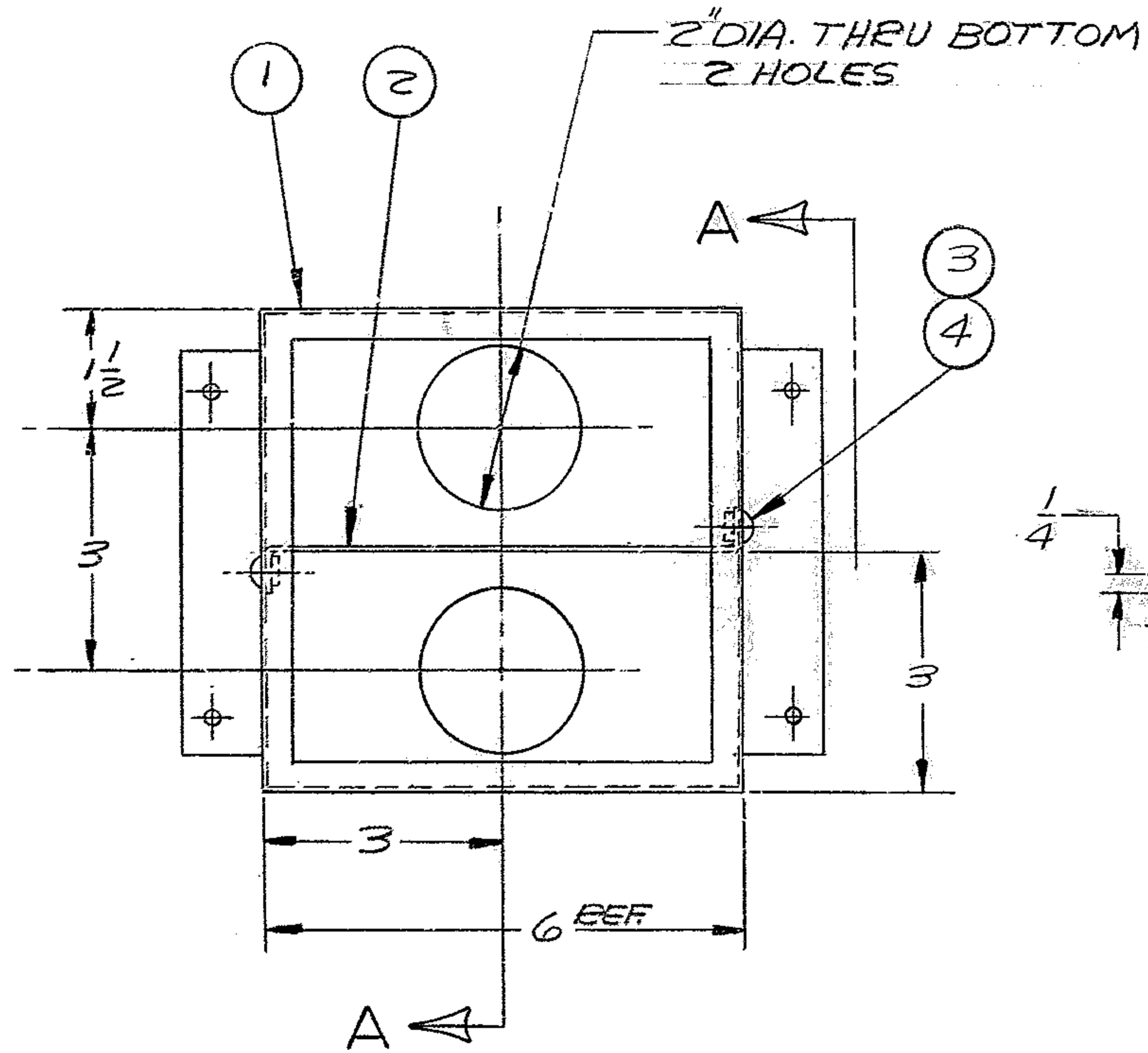


THIS DOCUMENT CONTAINS INFORMATION PROPRIETARY TO WESTERN GEAR CORPORATION. ALL DESIGN, MANUFACTURING, REPRODUCTION, USE, PATENT AND SALES RIGHTS REGARDING THE SAME ARE HEREBY EXPRESSLY RESERVED BY WESTERN GEAR CORPORATION. THIS DOCUMENT IS SUBMITTED FOR REFERENCE PURPOSES ONLY AND SHALL NOT BE DISCLOSED TO ANY UNAUTHORIZED PERSON OR INCORPORATED INTO ANY OTHER PROJECT.

REVISIONS				
ZONE	LTR	DESCRIPTION	DATE	APPROVED



NOTES:
 1. DIMS ARE IN INCHES. $\pm \frac{1}{8}$ E.A.N.
 2. PRIME PAINT P/N 2 ONLY

REF. FILE 1174

FIND NO.	PART NO.	DESCRIPTION	QTY	MATERIAL	CODE IDENT
		HEX NUT #10-24NC	4	CAD PLATE STL	
3		SLOTTED HD. SCREW #10-24 NC X 1/4 LG.	4	CAD PLATE STL	
2		14 GA. X 3 7/8 X 7	1	STL	
1	A606SL	ELECTRICAL BOX	1	HOFFMAN	

PARTS LIST (PL)

LIMITS ON MACHINED DIMENSIONS EXCEPT AS NOTED
 ANGULAR = $\pm 1^\circ 0'$
 LINEAR:
 .X = $\pm .1$.XXX = $\pm .010$
 .XX = $\pm .03$ FRACTIONAL = $\pm 1/32$
 BREAK ALL SHARP EDGES

DRAWN G.T. 5-2-72
 CHECK
 ENGR. LDS 5-3-72

WESTERN HEAVY MACHINERY DIVISION
 GEAR CORPORATION EVERETT, WASHINGTON

ELECTRICAL BOX
 MOD. - CENTER SECTION

MATERIAL	WG C 304873	SIZE	CODE IDENT NO.	REV
APPROVED		C	16603 2150.280C022	
		SCALE 1/2	WT	LB SHEET / OF /

NEXT ASSY. 2150.280E002 WG N102844