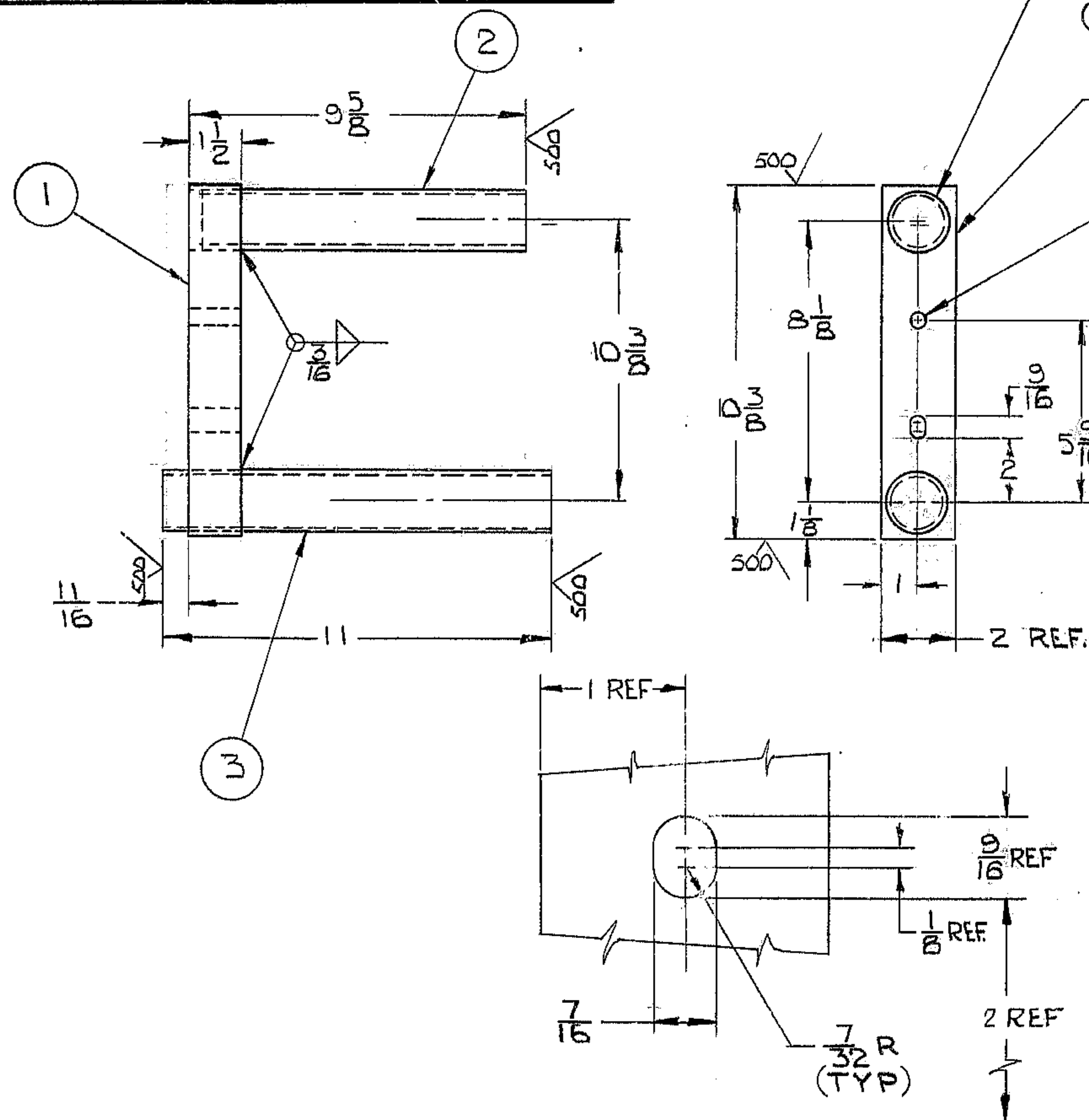


THIS TECHNICAL DATA, FURNISHED UNDER UNITED STATES GOVERNMENT CONTRACT NO. _____, SHALL NOT BE EITHER RELEASED OUTSIDE THE GOVERNMENT, OR USED, DUPLICATED, OR DISCLOSED IN WHOLE OR IN PART FOR MANUFACTURE OR PROCUREMENT, WITHOUT THE WRITTEN PERMISSION OF WESTERN GEAR CORPORATION EXCEPT FOR (i) EMERGENCY REPAIR OR OVERHAUL WORK BY OR FOR THE GOVERNMENT WHERE THE ITEM OR PROCESS CONCERNED IS NOT OTHERWISE REASONABLY AVAILABLE TO ENABLE TIMELY PERFORMANCE OF THE WORK OR (ii) RELEASE TO A FOREIGN GOVERNMENT AS THE INTERESTS OF THE UNITED STATES MAY REQUIRE. PROVIDED THAT IN EITHER CASE THE RELEASE, USE, DUPLICATION OR DISCLOSURE HEREOF SHALL BE SUBJECT TO THE FOREGOING LIMITATIONS. THIS LEGEND SHALL BE MARKED ON ANY REPRODUCTION HEREOF IN WHOLE OR IN PART.

REVISIONS				
ZONE	LTR	DESCRIPTION	DATE	APPROVED



1.906 DIA THRU \pm .001
1.922
(2) HOLES

STL STAMP F/N 2150.280 B103

7/16 DIA THRU

REF. FILE 1174

REF. FILE 8430

NEXT ASSY: 2150.280 D102

F/N	DESCRIPTION	QTY	MATERIAL
3	1 1/2 DIA PIPE X	1	STL SCHED 40
2	1 1/2 DIA PIPE X	1	STL SCHED 40
1	1 1/2 X 2 X 10 3/8	1	M1020 BAR OR EQUAL

LIST OF MATERIAL

<p>LIMITS ON MACHINED DIMENSIONS EXCEPT AS NOTED</p> <p>ANGULAR \pm 1° 0'</p> <p>LINEAR</p> <p>X = \pm .1</p> <p>.XX = \pm .03</p> <p>.XXX = \pm .010</p> <p>FRACTIONAL \pm 1/32</p> <p>BREAK ALL SHARP EDGES</p>	150 IN STELLAR TELESCOPE		<p>WESTERN HEAVY MACHINERY DIVISION</p> <p>GEAR CORPORATION EVERETT, WASHINGTON</p>	
	DRAWN		TOOL, DEC BRG REMOVAL	
	CHECK		SIZE B CODE IDENT NO. 16603	
	ENGR SKILES		2150.280 B103	
JWGC DWG. NO.		SCALE 1/4	WT.	REV
APPROVED		LB	SHEET 1	OF 1