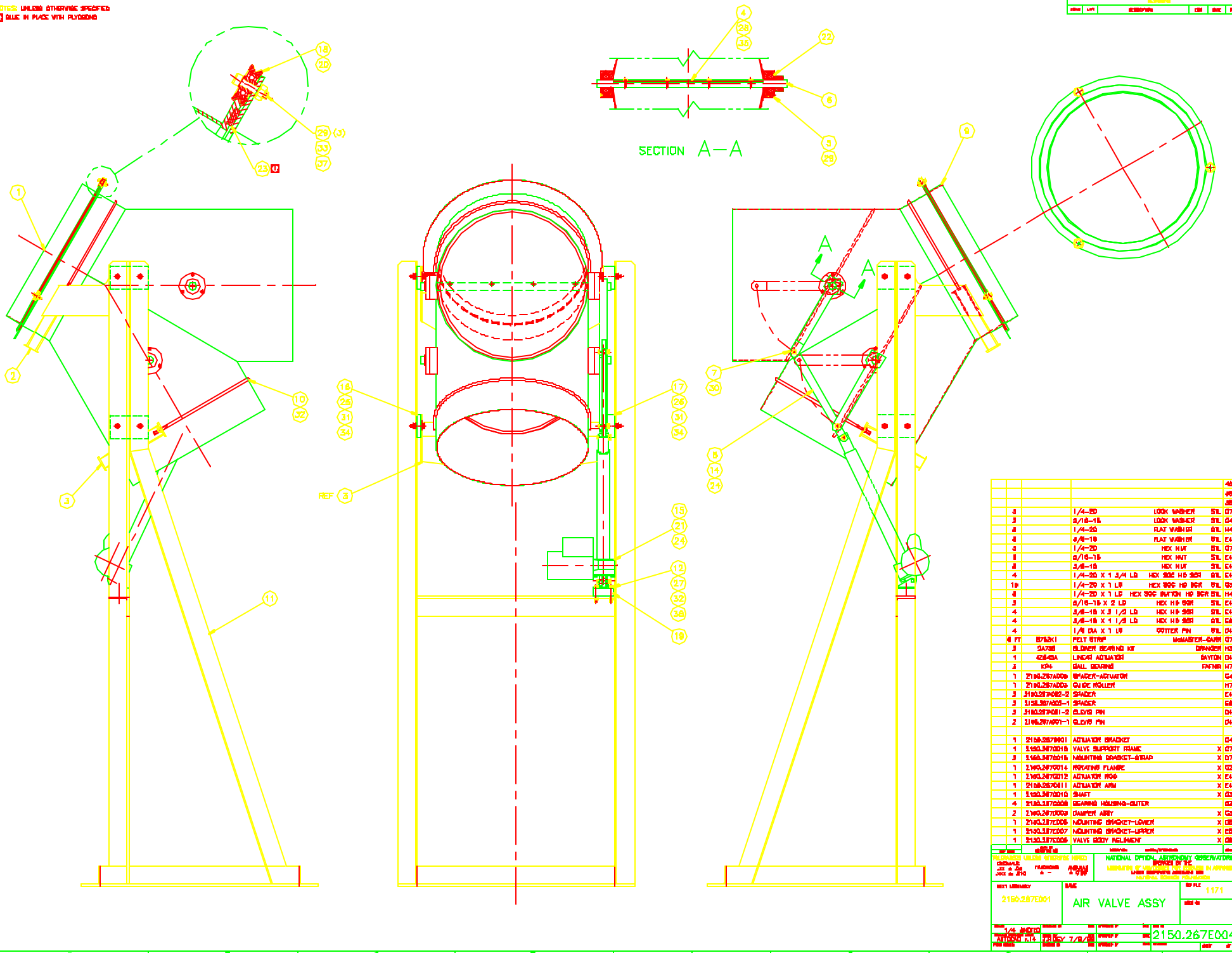


NOTICE: UNLESS OTHERWISE SPECIFIED  
 ALL DIMS IN PLACE WITH FLYING



4	1/4-20	LOOK WASHER	STL 07 37
3	3/16-16	LOOK WASHER	STL 04 38
2	1/4-20	FLAT WASHER	STL 04 36
1	3/8-18	FLAT WASHER	STL 04 34
1	1/4-20	HEX NUT	STL 07 33
1	3/16-16	HEX NUT	STL 04 32
2	3/8-18	HEX NUT	STL 04 31
4	1/4-20 X 1 3/4 LB	HEX HD BCR	STL 04 26
10	1/4-20 X 1 LB	HEX 90C HD BCR	STL 09 29
8	1/4-20 X 1 LB	HEX 90C BUTTON HD BCR	STL 04 28
3	3/16-18 X 2 LD	HEX HD SER	STL 04 27
4	3/8-18 X 3 1/2 LB	HEX HD SER	STL 04 28
4	3/8-18 X 1 1/2 LB	HEX HD SER	STL 04 26
4	1/4 DA X 1 LB	COTTER PIN	STL 04 24
4	FT	FELT STRIP	WASHER-SHAFT 07 23
3	SA708	SLIDER BEARING KIT	SPRINGER 03 22
1	428-03A	LINEAR ACTUATOR	DAYTON 04 31
2	K94	BALL BEARING	FRYER 07 26
1	2150.267A000	SHADER-ACTUATOR	04 19
1	2150.267A000	ON/OFF ROLLER	07 18
3	2150.267A002-2	SHADER	04 17
3	2150.267A003-1	SHADER	08 18
3	2150.267A001-2	SLIDER PIN	06 16
2	2150.267A001-1	SLIDER PIN	04 15
1	2150.267B001	ACTUATOR SHADNET	04 12
1	2150.267C001	VALVE SUPPORT FRAME	X 07 11
3	2150.267E001	INSULATING BRACKET-STRAP	X 07 10
1	2150.267F001	INSULATING FLANGE	X 02 8
1	2150.267G001	ACTUATOR HOOP	X 04 8
1	2150.267H001	ACTUATOR ARM	X 04 7
1	2150.267I001	SHAFT	X 03 6
4	2150.267J001	BEARING HOUSING-SLIDER	03 5
2	2150.267K001	DAMPER ARM	X 03 4
1	2150.267L001	INSULATING BRACKET-LOWER	X 08 3
1	2150.267M001	INSULATING BRACKET-UPPER	X 08 3
1	2150.267N001	VALVE BODY RELIEF	X 08 1

NATIONAL OPTICAL ASTRONOMY OBSERVATORY  
 4900 S. CAHILL DRIVE  
 TUCSON, AZ 85726-0001  
 PHONE: 520/318-7000  
 FAX: 520/318-7001  
 WWW: NOAO.EDU

2150.267E001  
**AIR VALVE ASSY**  
 REV: 1.0  
 DATE: 11/17/11

2150.267E004  
 DATE: 11/17/11