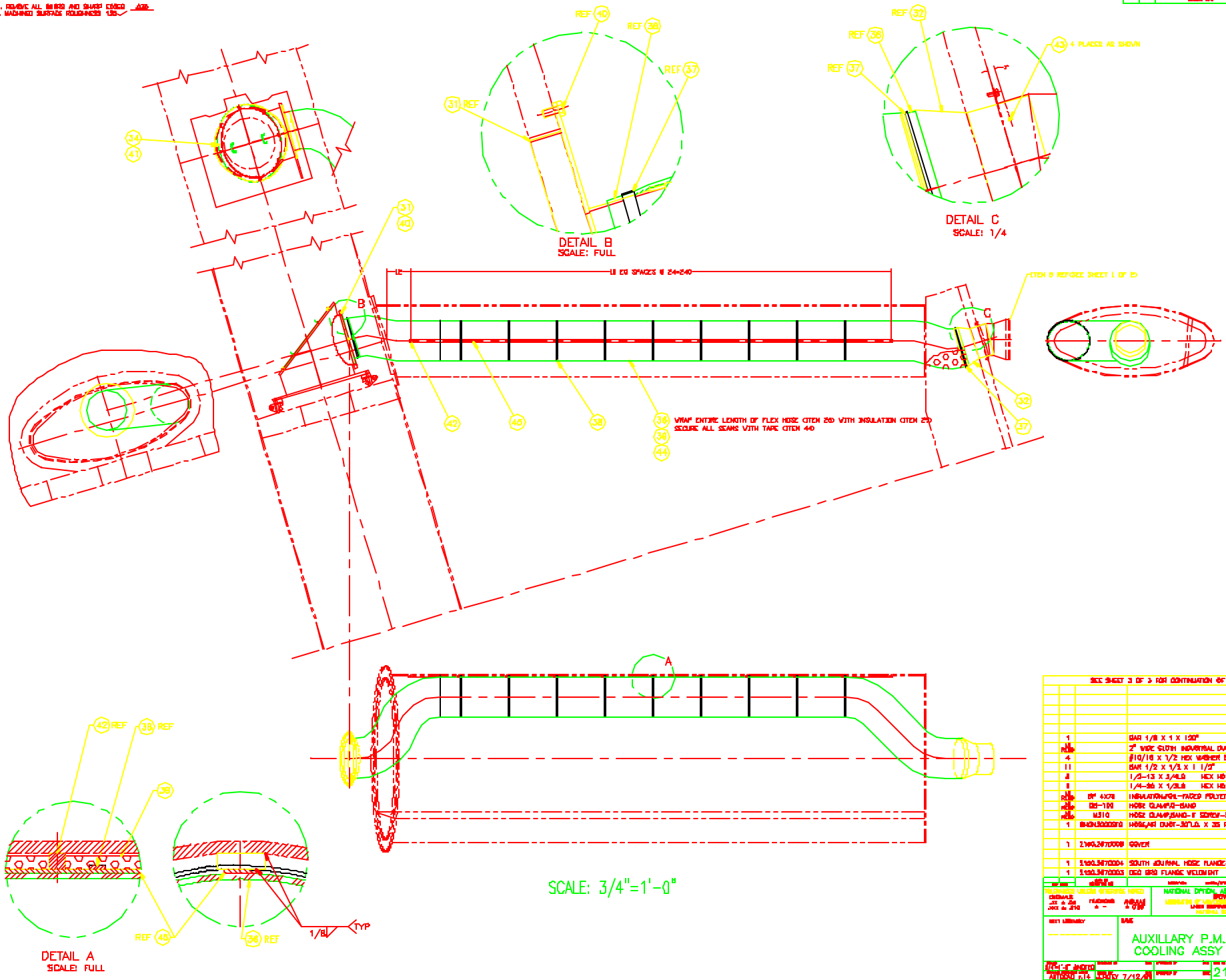


NOTES: UNLESS OTHERWISE SPECIFIED
 1. FINISH ALL BORED AND DRIFT HOLES
 2. MACHINED SURFACE ROUGHNESS 1.25



SEE SHEET 2 OF 3 FOR CONTINUATION OF PARTS LIST

QTY	PART NO.	DESCRIPTION	UNIT	QTY
1	BAR 1/8 X 1 X 120"	BAR 1/8 X 1 X 120"	BAR	1
2	WIDE SLOT INDUSTRIAL DUCT TAPE	2" WIDE SLOT INDUSTRIAL DUCT TAPE	EA	2
4	8/10/18 X 1/2 HEX WASHER SELF DRILL BIT	8/10/18 X 1/2 HEX WASHER SELF DRILL BIT	EA	4
11	BAR 1/2 X 1/4 X 1 1/2"	BAR 1/2 X 1/4 X 1 1/2"	EA	11
8	1/2-13 X 3/4 L9 HEX HB BSR	1/2-13 X 3/4 L9 HEX HB BSR	EA	8
1	1/4-20 X 1/2 L9 HEX HB BSR	1/4-20 X 1/2 L9 HEX HB BSR	EA	1
1	INSULATION-FOLY-FACED POLYETHYLENE REFLECTIX	INSULATION-FOLY-FACED POLYETHYLENE REFLECTIX	EA	1
1	HOSE CLAMP-SAND PLASTIC	HOSE CLAMP-SAND PLASTIC	EA	1
1	M310 HOSE CLAMP-SAND-F SCREW-SEAL	M310 HOSE CLAMP-SAND-F SCREW-SEAL	EA	1
1	HOSE-AR DUCT-30/1.0 X 35 FEET-TYPE "B" HOSE	HOSE-AR DUCT-30/1.0 X 35 FEET-TYPE "B" HOSE	EA	1
1	COVER	COVER	EA	1
1	SOUTH JOURNAL HOSE FLANGE-N	SOUTH JOURNAL HOSE FLANGE-N	EA	1
1	DEG GRD FLANGE MOUNT	DEG GRD FLANGE MOUNT	EA	1

NATIONAL OPTICAL ASTRONOMY OBSERVATORY
 LABORATORY OF LASER POWER BY PC
 LABORATORY OF LASER POWER BY PC
 LABORATORY OF LASER POWER BY PC

DATE: 7/12/84
 TIME: 11:17
 FILE: 2150.267E001A
 SHEET 2 OF 3