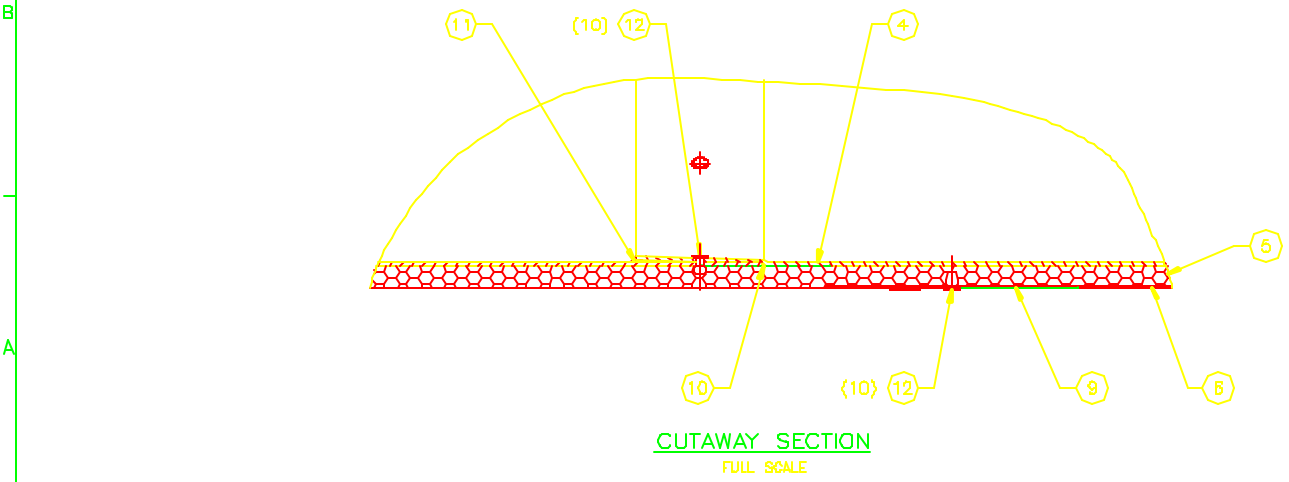
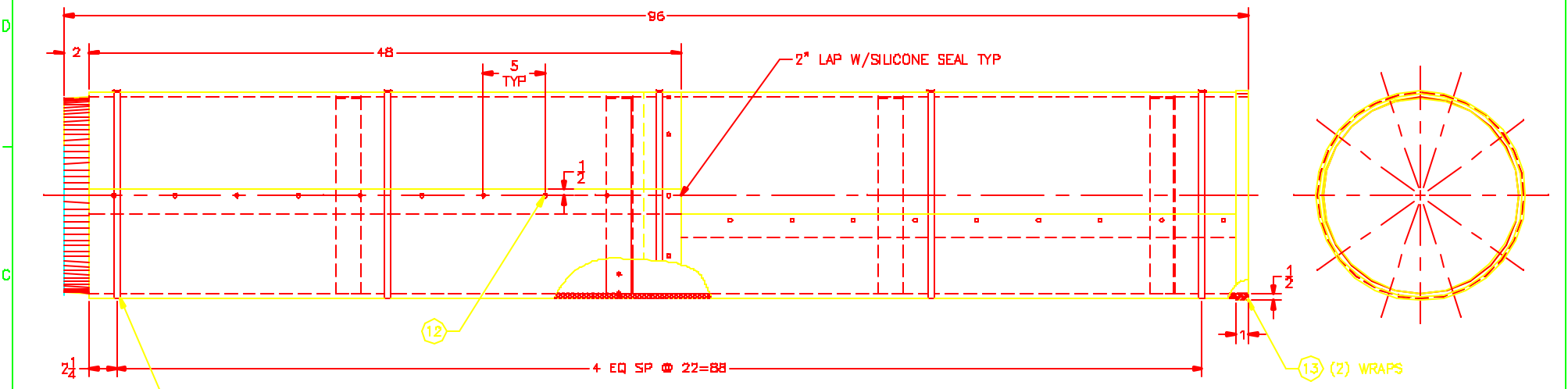


- NOTES: UNLESS OTHERWISE SPECIFIED
1. REMOVE ALL BUMPS AND SHARP EDGES $\sqrt{.000}$
 2. MACHINED SURFACE ROUGHNESS 128 $\sqrt{.000}$
 3. MAT'L: SEE B/M
 4. PART NUMBERS SHOWN ARE MANMASTER-CARR

REVISIONS					
DATE	BY	REVISION	DATE	BY	REVISION



QTY	DESCRIPTION	UNIT	QTY
			20
			18
			18
			17
			18
			10
			14
13	8984K75 1/4THK X 1 BLENDED 3POUNDS RUBBER STRIP	13	13
12	97619A025 BLIND RIVET- 1/8 DIA X 5/16LG	STL	12
11	88230A1 SILICONE-DOW CORNINGS 832		11
10	78136A18 CLOTH INDUSTRIAL DUCT TAPE,2" WIDE		10
9	78149A21 ALUMINUM FOIL DUCT TAPE,2" WIDE		9
8	4882K15 PIPE COVERING BEALS	ALUM	8
7	4882K12 PIPE COVERING BANDING,1/2 WIDE	ALUM	7
6	4479K9 PIPE INSULATION JACKETS-.018 THK X 48" LB	ALUM	6
5	9087K24 INSULATION-FOIL FACED POLYETHYLENE 5/16 THK		5
4	1788K22 ROUND DUCT-16" DIA X 24" LB GALV. STL		4
			3
			2
1	2150.267D012 TUBE-INSULATED, 16" AIR DUCT ASSY (ITEMS 4 THRU 12)		1

TOLERANCES UNLESS OTHERWISE NOTED
 DECIMALS .001 ± .001
 FRACTIONS ± .001
 ANGULAR ± 0.50°

NATIONAL OPTICAL ASTRONOMY OBSERVATORIES
 OPERATED BY THE
 ASSOCIATION OF UNIVERSITIES FOR RESEARCH IN ASTRONOMY
 UNDER DISCREETARY AGREEMENT WITH
 NATIONAL SCIENCE FOUNDATION

NEXT ASSEMBLY: 2150.267E001
 NAME: TUBE-INSULATED 16" AIR DUCT
 REV FILE: 1171
 REV BY:

1/4 INVENTED BY: []
 AUTOCAD V.14: []
 11/4/88

2150.267D012