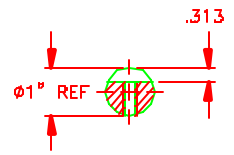
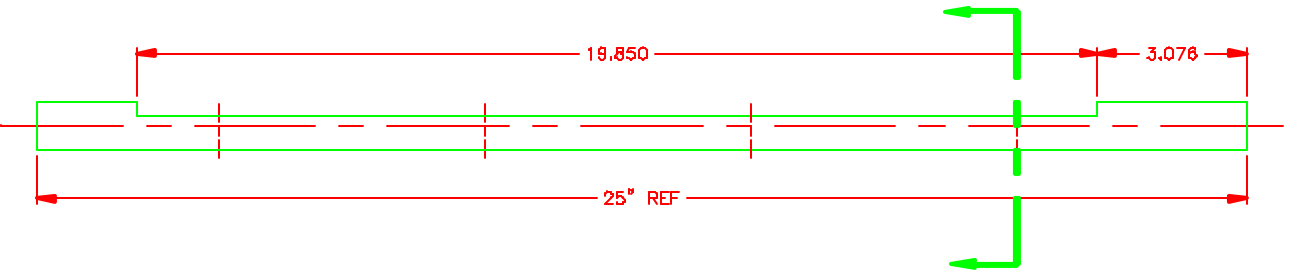
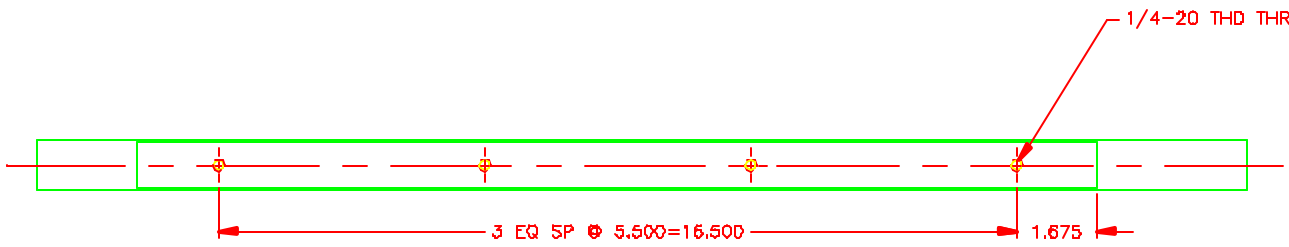


NOTES: UNLESS OTHERWISE SPECIFIED

- 1. REMOVE ALL BURRS AND SHARP EDGES .015
- 2. MACHINED SURFACE ROUGHNESS 125 ✓
- 3. MAT'L: 1" SHAFT X 25" LG GRANGER CAT #4C908

REVISIONS						
ZONE	LTR	DESCRIPTION	EDR	DATE	BY	APPR



QTY REQD	PART OR IDENTIFYING NO	DESCRIPTION	MATERIAL/SPECIFICATION	ZONE	ITEM NO
TOLERANCES UNLESS OTHERWISE NOTED DECIMALS .XX ± .03 FRACTIONS ± - ANGULAR ± 0'30"		NATIONAL OPTICAL ASTRONOMY OBSERVATORIES OPERATED BY THE ASSOCIATION OF UNIVERSITIES FOR RESEARCH IN ASTRONOMY UNDER COOPERATIVE AGREEMENT WITH NATIONAL SCIENCE FOUNDATION			
NEXT ASSEMBLY 2150.267E004		NAME SHAFT		REF FILE 1171	
SCALE 1/2		DESIGNED BY J.HOEY	DATE 05/13/99	APPROVED BY [Signature]	DATE [Blank]
DRAWING PRODUCED USING AUTOCAD v.14		CHECKED BY [Blank]	DATE [Blank]	APPROVED BY [Blank]	DATE [Blank]
PRINT REVIEW		RELEASED		SHEET 1 OF 1	