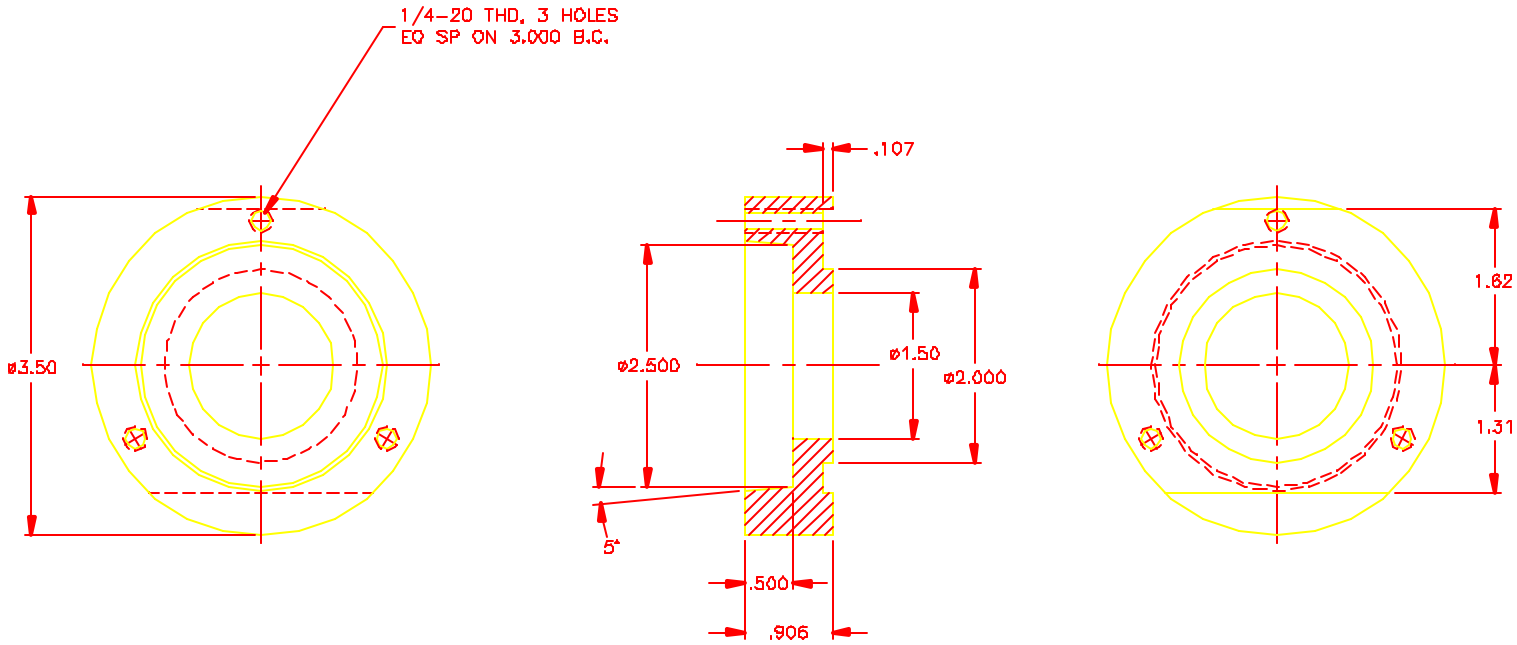


- NOTES: UNLESS OTHERWISE SPECIFIED
1. REMOVE ALL BURRS AND SHARP EDGES .015
 2. MACHINED SURFACE ROUGHNESS 125 ✓
 3. MAT'L: GOLD ROLLED STEEL 1010-1020
 4. FINISH:

| REVISIONS | | | | | |
|-----------|-----|-------------|-----|------|----|
| ZONE | LTR | DESCRIPTION | EDR | DATE | BY |



| QTY REQD | PART OR IDENTIFYING NO | DESCRIPTION | MATERIAL/SPECIFICATION | ZONE | ITEM NO |
|----------------------------------------|------------------------|-------------------------------------------------------|------------------------|------------------|------------------------|
| TOLERANCES UNLESS OTHERWISE NOTED | | NATIONAL OPTICAL ASTRONOMY OBSERVATORIES | | | |
| DECIMALS .XX ± .03 | | OPERATED BY THE | | | |
| FRACTIONS .XXX ± .010 | | ASSOCIATION OF UNIVERSITIES FOR RESEARCH IN ASTRONOMY | | | |
| ANGULAR ± - | | UNDER COOPERATIVE AGREEMENT WITH | | | |
| | | NATIONAL SCIENCE FOUNDATION | | | |
| NEXT ASSEMBLY 2150.267E006 | | NAME BEARING HOUSING- INNER | | REF FILE 1171 | |
| | | | | USED ON | |
| SCALE FULL | DESIGNED BY J.HOEY | DATE 05/03/99 | APPROVED BY | DATE | DWG NO 2150.267C008 |
| DRAWING PRODUCED USING AUTOCAD v.14 | CHECKED BY | DATE | APPROVED BY | DATE | REV |
| PRINT REVIEW | | | | | SHEET OF |