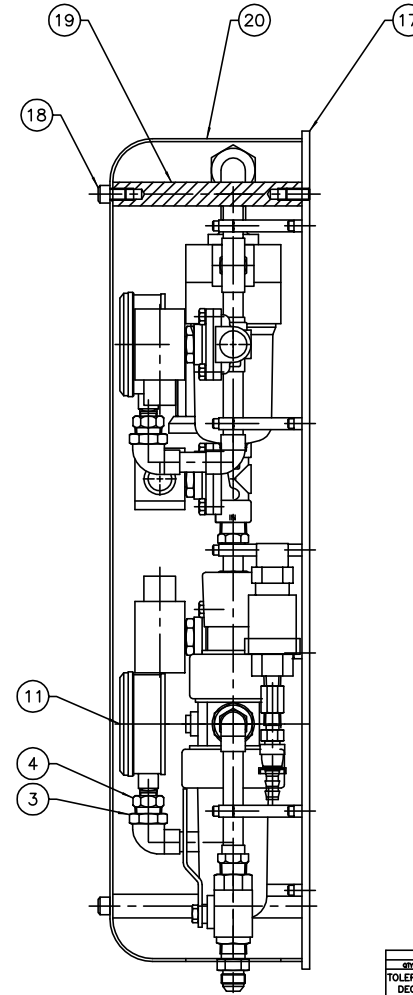
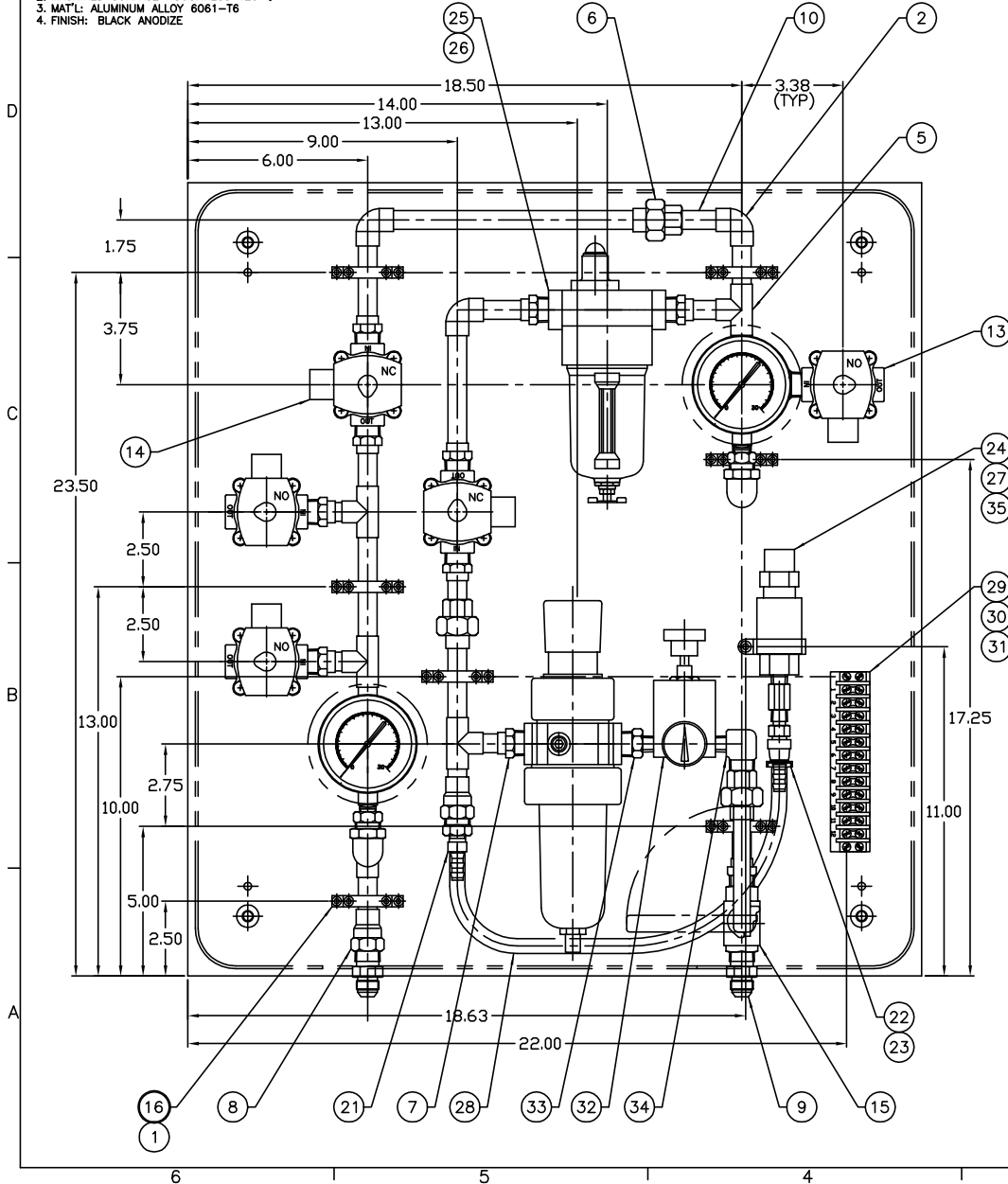


NOTES: UNLESS OTHERWISE SPECIFIED
 1. REMOVE ALL BURRS AND SHARP EDGES $\sqrt{.030}$
 2. MACHINED SURFACE ROUGHNESS 125
 3. MAT'L: ALUMINUM ALLOY 6061-T6
 4. FINISH: BLACK ANODIZE

REVISIONS					
ZONE	LTR	REVISIONS	ECR	DATE	BY / APPR
A		ADDED ITEMS 32 THRU 35	3516	9/31/00	JH
		ITEM 24 WAS OMEGA (#9510-PSW110 SERIES)			



QTY	DESCRIPTION	UNIT	ZONE	ITEM NO
1	1/2" CABLE CLAMP		3C	35
1	1/2" NPT X 1/4" NPT 90° ELBOW		4A	34
1	1/2" NPT X 1/4" NPT CLOSE NIPPLE		4A	33
1	100-80G REGULATOR 1/4" GAUGE, 2-120 PSI	CONTROLAR INC	4A	32
4	#8-32 X 0.5 LG BINDING HEAD SCR	STL	3B	31
1	M5-20-141 MARKER STRIP	CINCH	3B	30
1	20-141 BARRIER TERMINAL BLOCK	CINCH	3B	29
TO SUIT	STOCK HOSE 3/8" IN DIA		5A	28
1	STOCK #1/2-20 THD X 3/8" LG, SOC HD SCR, STN STL		3C	27
1	S350-07 "MORGREN" FILTER ELEMENT		5D	26
1	F45-40M0DA "MORGREN" OIL FILTER		5D	25
1	PSW-003 "OMEGA", PSW-800 SERIES PRESSURE SWITCH, RANGE 5-31 PSI, 5 A, 125 VAC		3C	24
1	070102-6 "PARKER", FTX MALE SAE (AC) 37° FLARE (3/8" TUBE)		4A	23
1	30862-8-8B "PARKER", SAE (AC) 37° SWIVEL - BRASS (3/8" TUBE)		4A	22
1	30182-8-8B "PARKER", MALE NPT PIPE - BRASS (3/8" TUBE)		5A	21
1	2150.266-0421 SAFETY VENT VALVES COVER		3D	20
4	2150.266-0422 SAFETY VENT VALVES POST ASSEMBLY		3D	19
4	STOCK 3/8-16 THD X 1/2" LG, SOC HD SCR, STN STL		3D	18
1	2150.266-0420 BASE PLATE		2D	17
7	2150.266-4423 CLAMP SUB-ASSEMBLY		6A	16
1	V1500-8 "PARKER", SHUTOFF VALVE (1/2" NPT)		4A	15
2	8210094 "ASCO", SOLENOID VALVE, 60 Hz 120VAC, N.C.		6C	14
3	8210054 "ASCO", SOLENOID VALVE, 60 Hz 120VAC, N.O.		3C	13
1	07E31A3A "PARKER", FILTER REGULATOR		5A	12
2	15067 "MARSH", TEST GAUGE (0 TO 30 PSI, 5% ACCURACY)		8B	11
TO SUIT	STOCK TUBE #1/2", COPPER, TYPE "L" (.825 OD ± .040 WALL)		4D	10
2	0103-8-8 "PARKER", MALE ADAPTER (1/2" NPT - 3/4-16 THD) STL		4A	9
1	STOCK FEMALE ADAPTER (#1/2" - 1/2" NPT) COPPER		6A	8
12	STOCK MALE ADAPTER (#1/2" - 1/2" NPT) COPPER		4A	7
3	STOCK UNION #1/2", BRASS		5D	6
6	STOCK TEE #1/2", COPPER		4D	5
2	0102-8-4 "PARKER", REDUCER BUSHING (1/2" NPT - 1/4" NPT) STL		3B	4
2	STOCK 90° ELBOW #1/2" SOLDER X 1/2" FEMALE NPT, BRASS		3B	3
6	STOCK 90° ELBOW #1/2", COPPER		4D	2
14	STOCK #10-24 THD X 1/2" LG, SOC HD SCR, STN STL		6A	1

TOLERANCES UNLESS OTHERWISE NOTED		NATIONAL OPTICAL ASTRONOMY OBSERVATORIES	
DECIMALS	FRACTIONS	OPERATED BY THE	
.XXX ± .030	± 1/16"	ASSOCIATION OF UNIVERSITIES FOR RESEARCH IN ASTRONOMY	
		UNDER COOPERATIVE AGREEMENT WITH NATIONAL SCIENCE FOUNDATION	
NEXT ASSEMBLY	NAME	REF FILE	REV
2150.266E400	SAFETY VENT VALVES ASSEMBLY	1173	
DRAWING PRODUCED USING AUTOCAD v.15		DATE	2150.266D403 A
CHECKED BY	DATE	DATE	DATE
J.HOEY	12/19/97		