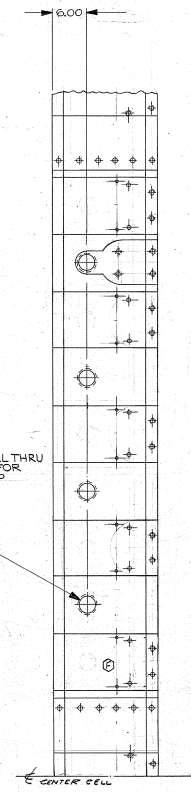
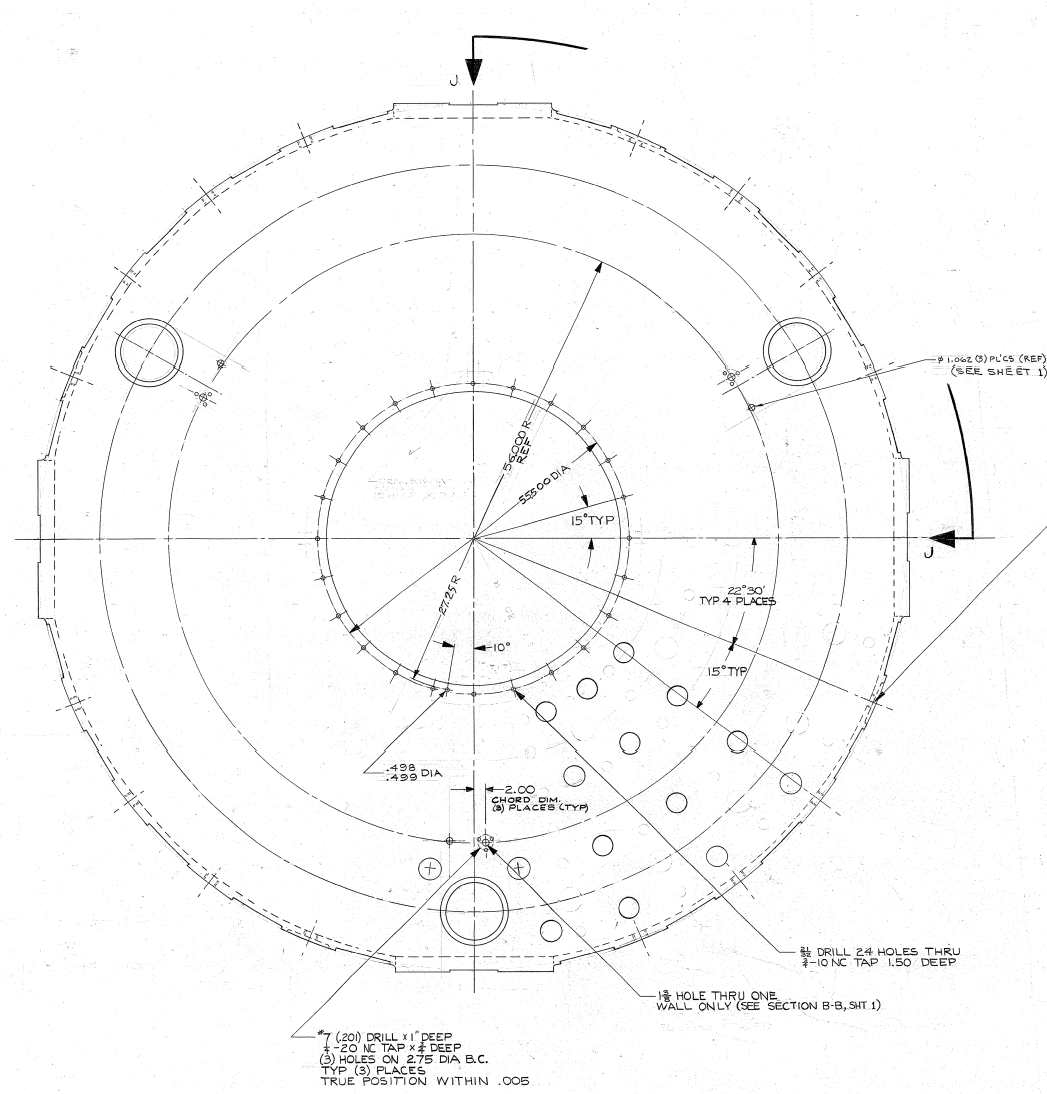


THIS DOCUMENT CONTAINS INFORMATION PROPRIETARY TO WESTERN GEAR CORPORATION. ALL DESIGN MANUFACTURING REPRODUCTION USE, PATENT AND OTHER RIGHTS REGARDING THE SAME ARE HEREBY EXPRESSLY RESERVED BY WESTERN GEAR CORPORATION. THIS DOCUMENT IS SUBMITTED FOR REFERENCE PURPOSES ONLY AND SHALL NOT BE DISCLOSED TO ANY UNAUTHORIZED PERSON OR INCORPORATED INTO ANY OTHER PROJECT.

REVISIONS			
ZONE	LTR	DESCRIPTION	DATE APPROVED
C	SEE SHIT 1		2/1/71 J.W.
D	SEE SHIT 1		
E	SEE SHIT 1		
F	ADDED 10 HOLES VIEW J-J SEE SHIT 1		10/20/71 J.W.
G	ADDED 3 HOLES (SEE VIEW H-H SEE SHIT 1)		10/27/71 J.W.



VIEW H-H

VIEW J-J

WESTERN GEAR CORPORATION  
CONSTRUCTION PROJECTS  
DEPARTMENT  
APPROVED FOR  
PROCUREMENT  
G. Russo DATE 11/13/71

NEXT ASSY 2150.260.E002 (WGN 103561)					
FIG. NO.	PART NO.	DESCRIPTION	QTY	MATERIAL	CODE
LIST OF MATERIAL (L.M.)					
LIMITS ON MACHINED DIMENSIONS UNLESS AS NOTED ANGULAR = ± 1° LENGTH X = ± .1    .000 = ± .000 X < ± .01    FRACTIONS = ± 1/32 MATERIAL: ENGR BREAK ALL SHARP EDGES SEE SHEET 1					
150° STELLAR TELESCOPE N78		WESTERN GEAR CORPORATION HEAVY MACHINERY DIVISION SICRETT, WASHINGTON			
DRAWN BY FERLAN 152049		MIRROR CELL PRIMARY MIRROR			
CHECK BY ENGR 1/10/71		WGN 103578			
ENGR		SIZE CODE IDENT NO. E 16603 2150.260.E003			
REV. 11/11		SCALE 1/8" = 1"			
APP'D		REV. G			
		LW SHEET 2 OF 2			