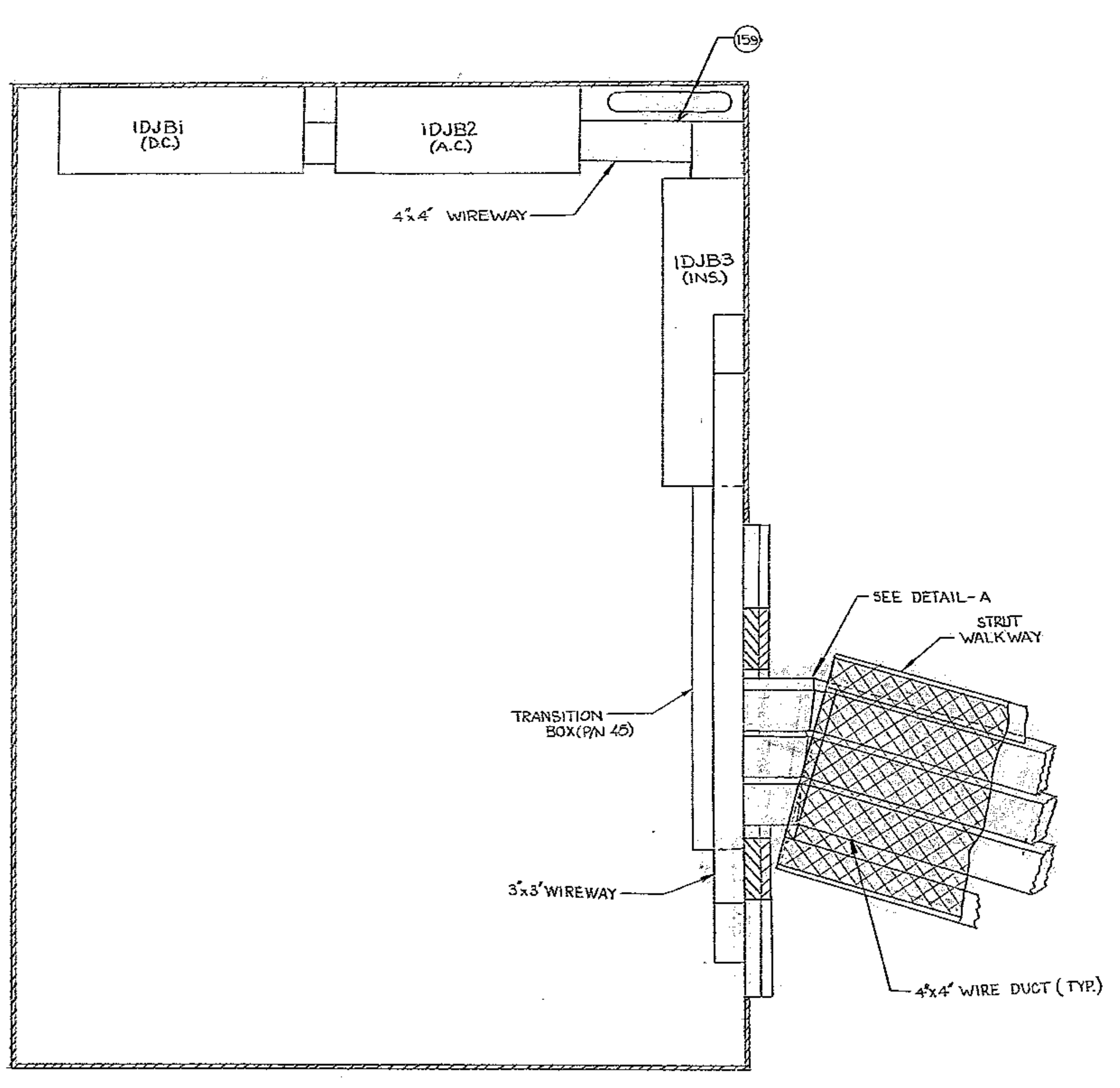
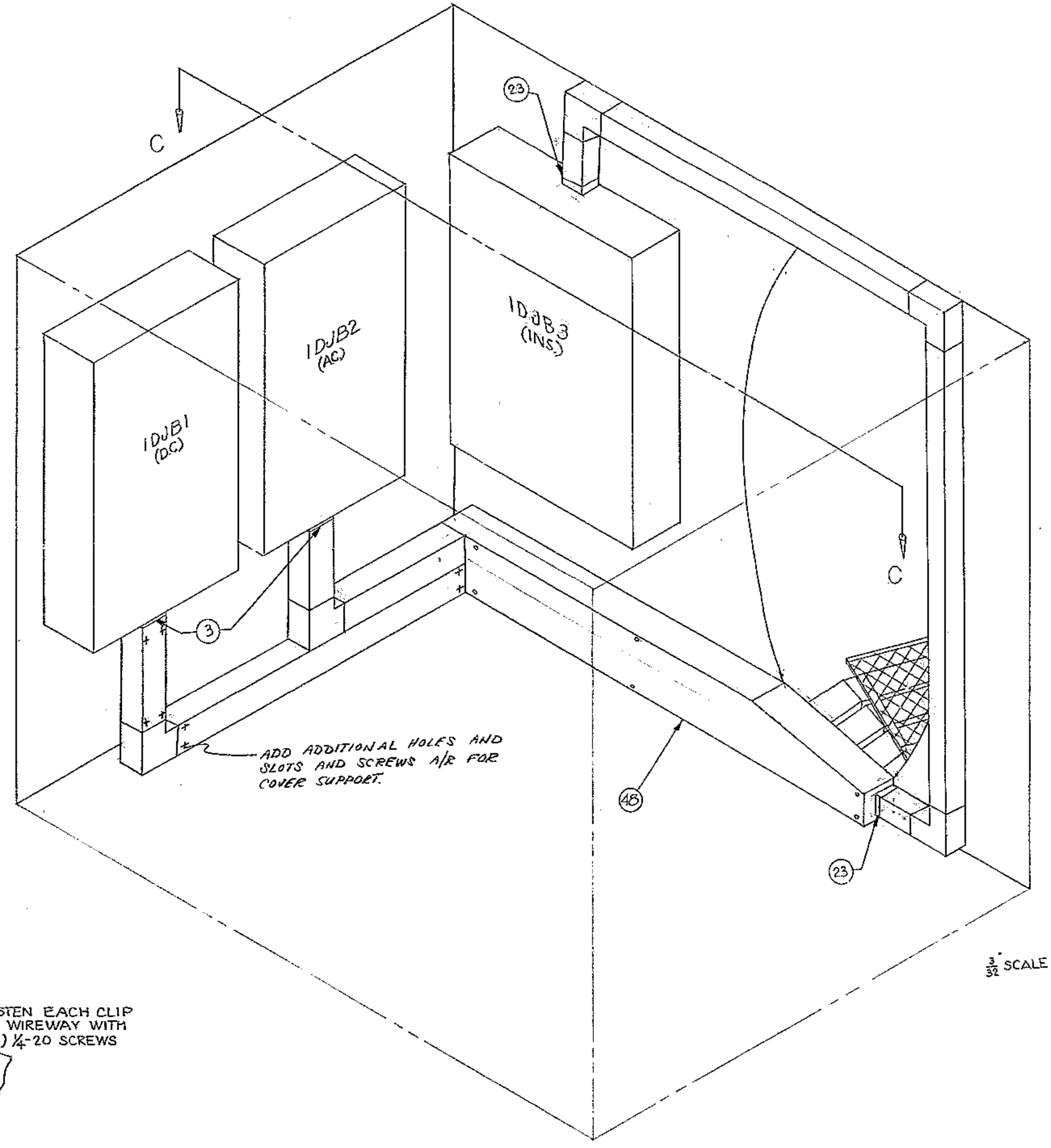


THIS DOCUMENT CONTAINS INFORMATION PROPRIETARY TO WESTERN GEAR CORPORATION. ALL DESIGN, MANUFACTURING, REPRODUCTION, USE, PATENT, AND SALES RIGHTS REGARDING THE SAME ARE HEREBY EXPRESSLY RESERVED BY WESTERN GEAR CORPORATION. THIS DOCUMENT IS SUBMITTED FOR REFERENCE PURPOSES ONLY AND SHALL NOT BE DISCLOSED TO ANY UNAUTHORIZED PERSON OR INCORPORATED INTO ANY OTHER PROJECT.

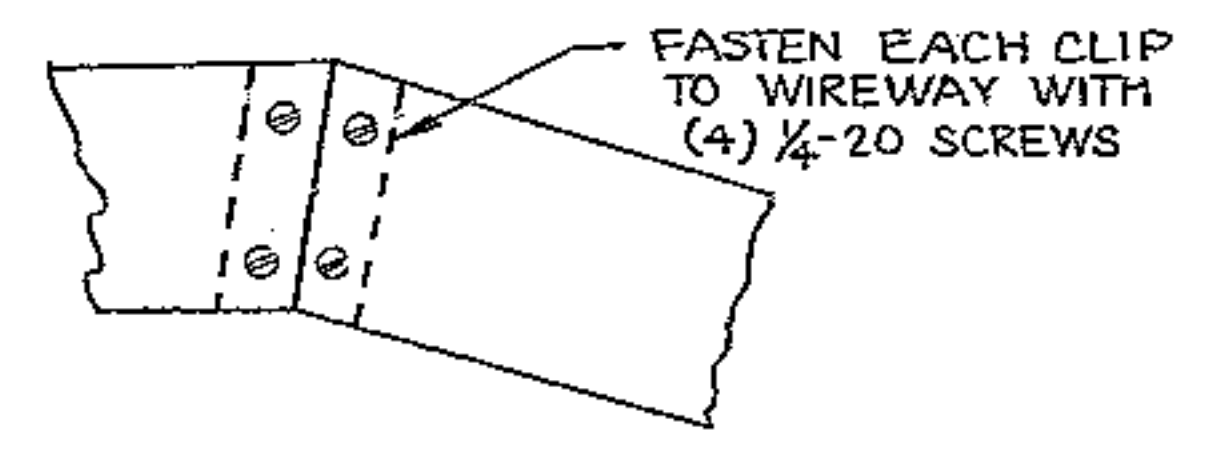
REVISIONS			
ZONE	LTR	DESCRIPTION	DATE
H		GENERAL REVISIONS	7-15-71



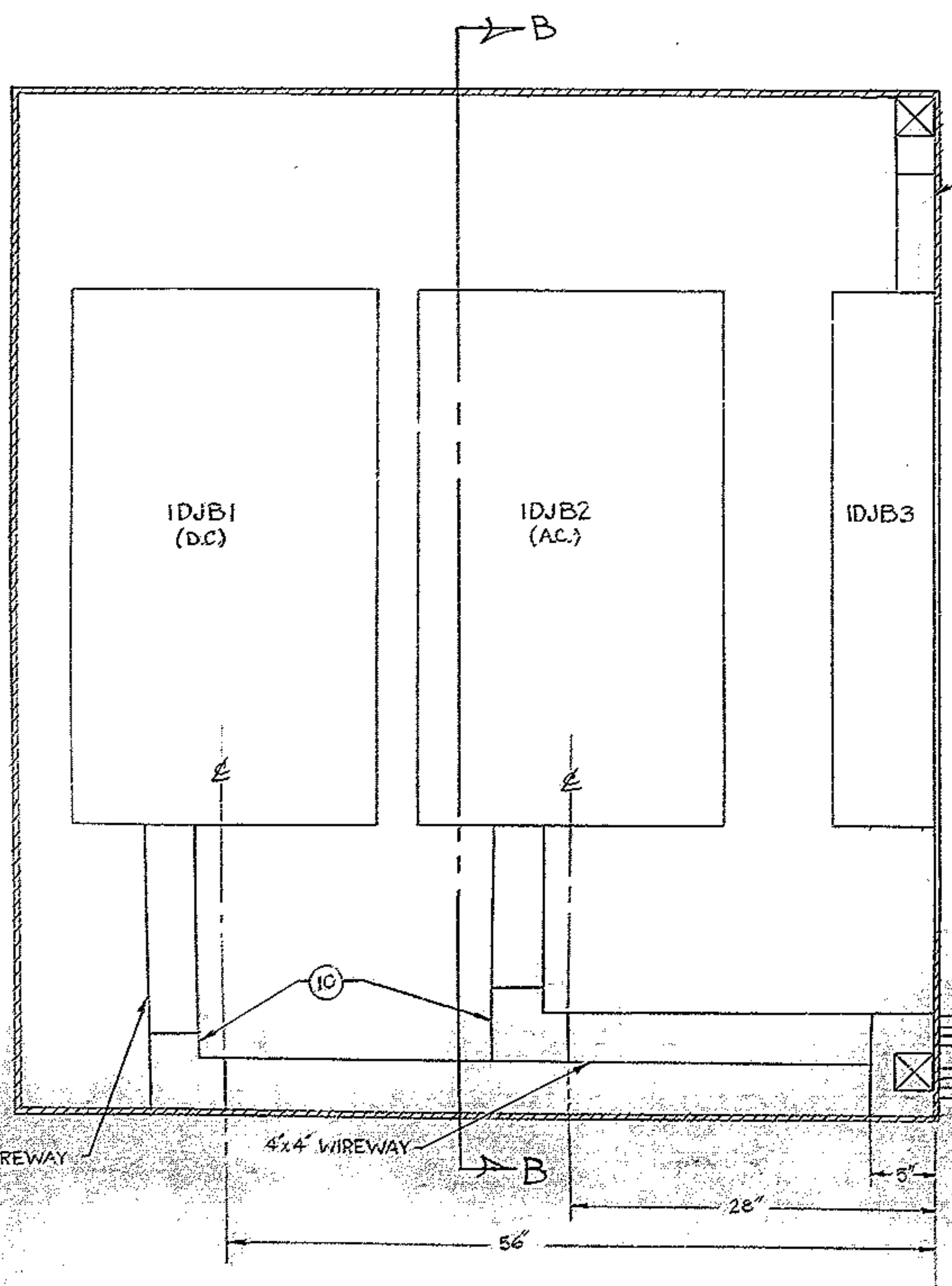
SECTION C C
1/8" SCALE



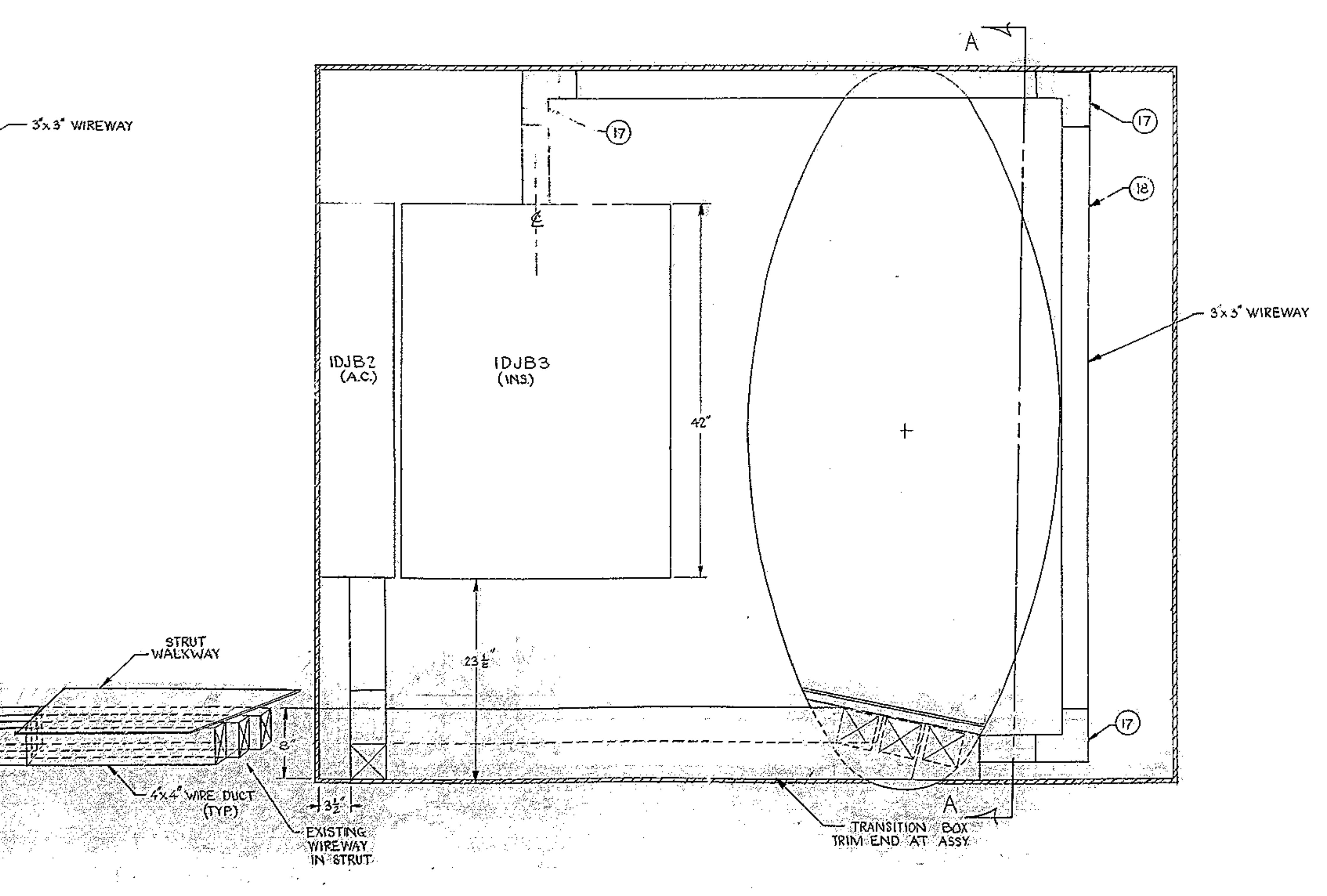
3/32" SCALE



DETAIL - A
FIELD FABRICATE
14 GA. STL. CLIPS
1/8" SCALE



SECTION A A
1/8" SCALE



SECTION B B
1/8" SCALE

PART NO.	DESCRIPTION	QTY	MATERIAL	CODE IDENT
23	ADAPTOR FOR 3'x3'	2	CIRCLE A-W # 33GF	
18	3'x3' WIREWAY	3	CIRCLE A-W # 3372G	
17	3" ELBOW 90°	3	CIRCLE A-W # 33X	

LIMITS ON MACHINED DIMENSIONS EXCEPT AS NOTED		DRAWN		APPROVED	
ANGULAR	± 1°	DATE		DATE	
LINEAR	± .01	CHECK		ENGR	
	± .02				
	± .03				
BREAK ALL SHARP EDGES					

LIST OF MATERIAL (LM)		WESTERN GEAR CORPORATION	
150" STELLAR TELESCOPE		HEAVY MACHINERY DIVISION EVERETT, WASHINGTON	
EAST HORSESHOE TERMINAL BOXES & RACEWAY			
SIZE	CODE IDENT NO.	REV	
E 16603	2150-250-E 002	Q	
SCALE 1/2" = 1'	WT	LB SHEET 7	OF 7