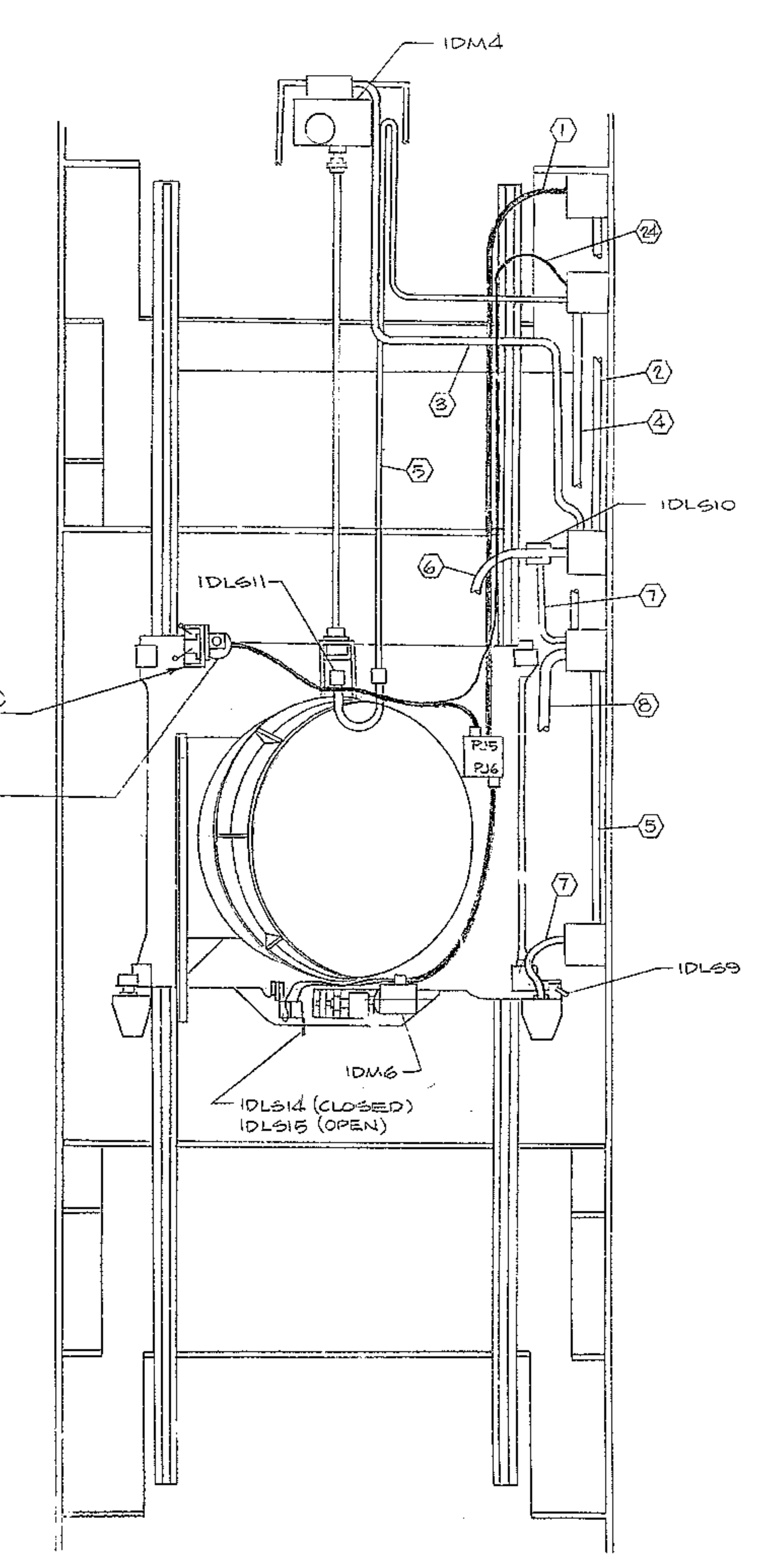
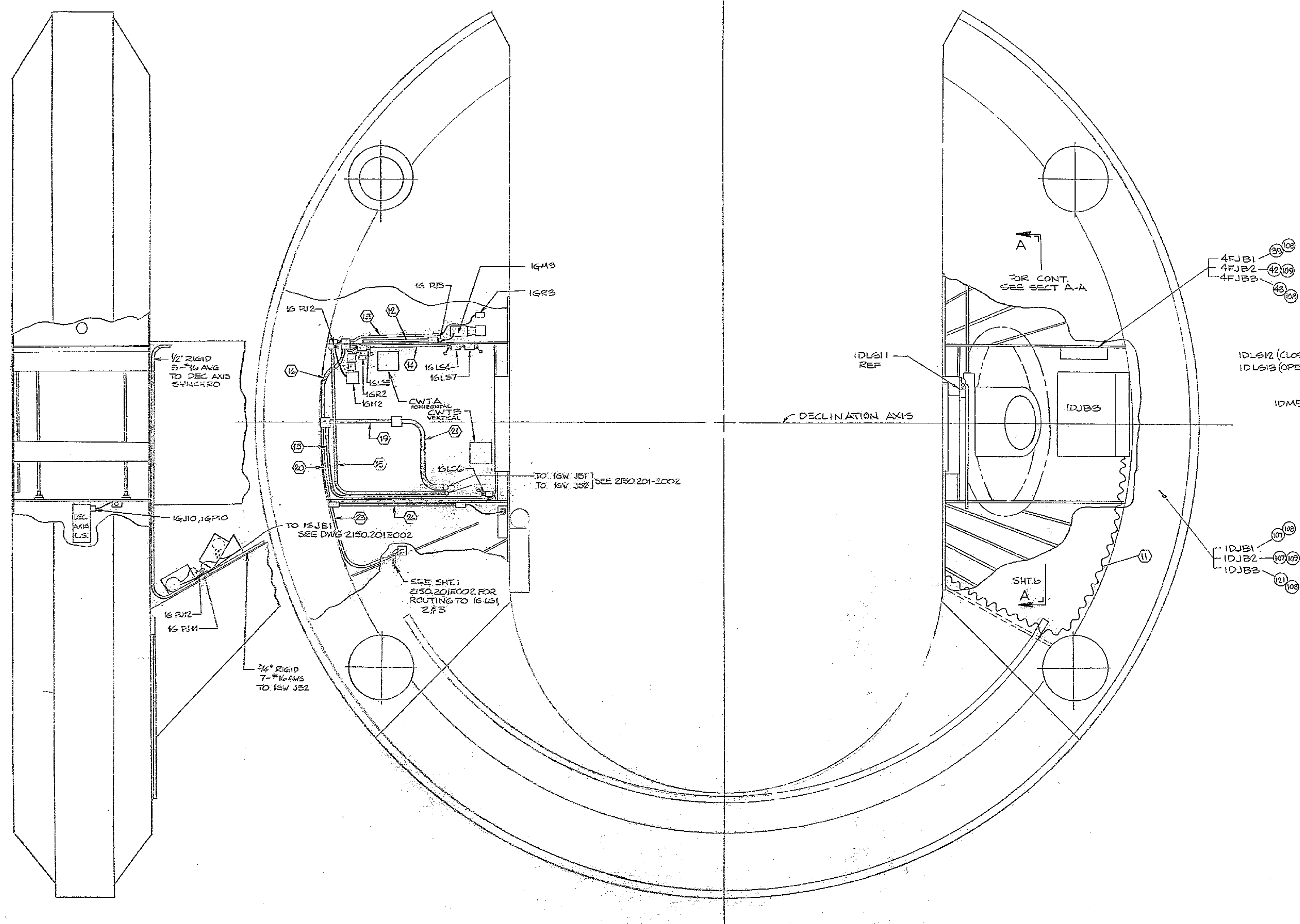


REVISIONS			
ZONE LTR	DESCRIPTION	DATE	APPROVED
P	DELETE Ø#20 & Ø25 DELETE SUBI TERMINAL BOX DECLINATION WAS DECLANATION ADDED SEE DWG 2150.201E002 PLCS	9-6-75	
Q	'AS BUILT' CORRECTIONS	4DEC75	YR

N



SECTION A-A SHT.6
ALSO SEE SECTION A-A SHT.1

- SEE B/M 2150.250A002
- EXPLANATION
1. COILDE 4 CABLE WRAP - UP, 3 - 1/8" #18 AWG., A.C., Ø - 1/4" AWG.
 2. P. CONDUIT, 2 - 1/2" #16 AWG., A.C.
 3. 3/4" CONDUIT, 4 - #16 AWG., A.C.
 4. 3/4" CONDUIT, 10 - #16 AWG., D.C.
 5. 1" CONDUIT, 2 - #16 AWG., D.C.
 6. P. CONDUIT, 4 - #16 AWG., 2 - 1/2" #16 to IDJ32, A.C.
 7. 1/2" FLEX CONDUIT, 2 - #18 AWG., D.C.
 8. P. CONDUIT, 14 - #18 AWG. to IDJ31, D.C.
 9. 1" CONDUIT, 2 - #16 AWG., D.C.
 10. 1/2" FLEX CONDUIT, 2 - #16 AWG., D.C.
 11. AURA CABLE FROM ID BOXES TO CENTER SECTION IH BOXES.
 12. 1/2" CONDUIT, 4 - #16 AWG., A.C.
 13. 1" CONDUIT, 3 - #16 AWG., D.C.
 14. 1" CONDUIT, 5 - #16 AWG., D.C.
 15. 3/4" CONDUIT, 8 - #16 AWG., A.C.
 16. 3/4" CONDUIT, 12 - #16 AWG., D.C.
 17. 1" CONDUIT, 3 - #16 AWG., D.C.
 18. 1" CONDUIT, 2 - #16 AWG., D.C.
 19. P. CONDUIT, 24 - #16 AWG., D.C.
 20. 3/4" CONDUIT, 13 - #16 AWG., D.C.
 21. 1/2" CONDUIT, 24 - #16 AWG., D.C.
 22. 3/4" CONDUIT, 7 - #16 AWG., D.C.
 23. 1" CONDUIT, 4 - #16 AWG., D.C.
 24. 1" CONDUIT, 3 - #16 AWG., D.C.
 25. TWO #16 CONDUIT TO DRIVE PAGES VIA WRAP-UP
 26. 3/4" CONDUIT, 9 - #16 AWG., D.C.

1168

FIND NO.	PART NO.	DESCRIPTION	QTY	MATERIAL	UNIT WEIGHT
LIST OF MATERIAL (LM)					
LIMITS ON MACHINED DIMENSIONS EXCEPT AS NOTED		150" STELLAR TELESCOPE		WESTERN HEAVY MACHINERY DIVISION	
ANGULAR = ± 1°				GEAR CORPORATION	
LINEAR:				EVERETT, WASHINGTON	
X = ± .1		XXX = ± .010		HORSESHOE ASSEMBLY ELECTRICAL CONDUIT & WIRE LAYOUT (ROUTING & GENERAL LOCATION)	
.XX = ± .01		FRACTIONAL = ± 1/32			
BREAK ALL SHARP EDGES					
MATERIAL					
		WGN102901		SIZE CODE IDENT NO.	
APPROVED				E 16603	
				2150.250-E002	
				REV	
				Q	
				SCALE WT LB SHEET 6 OF 7	