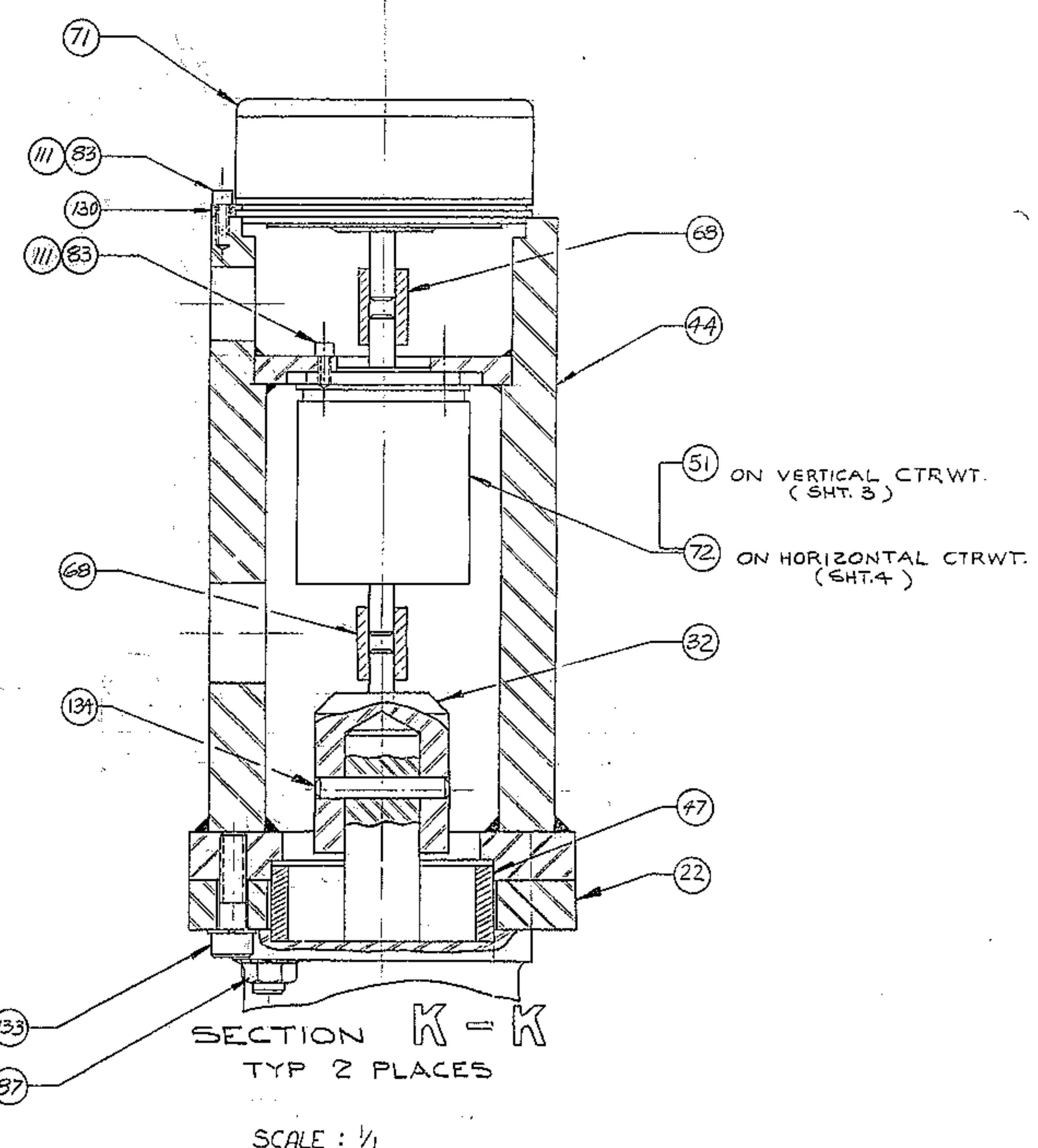
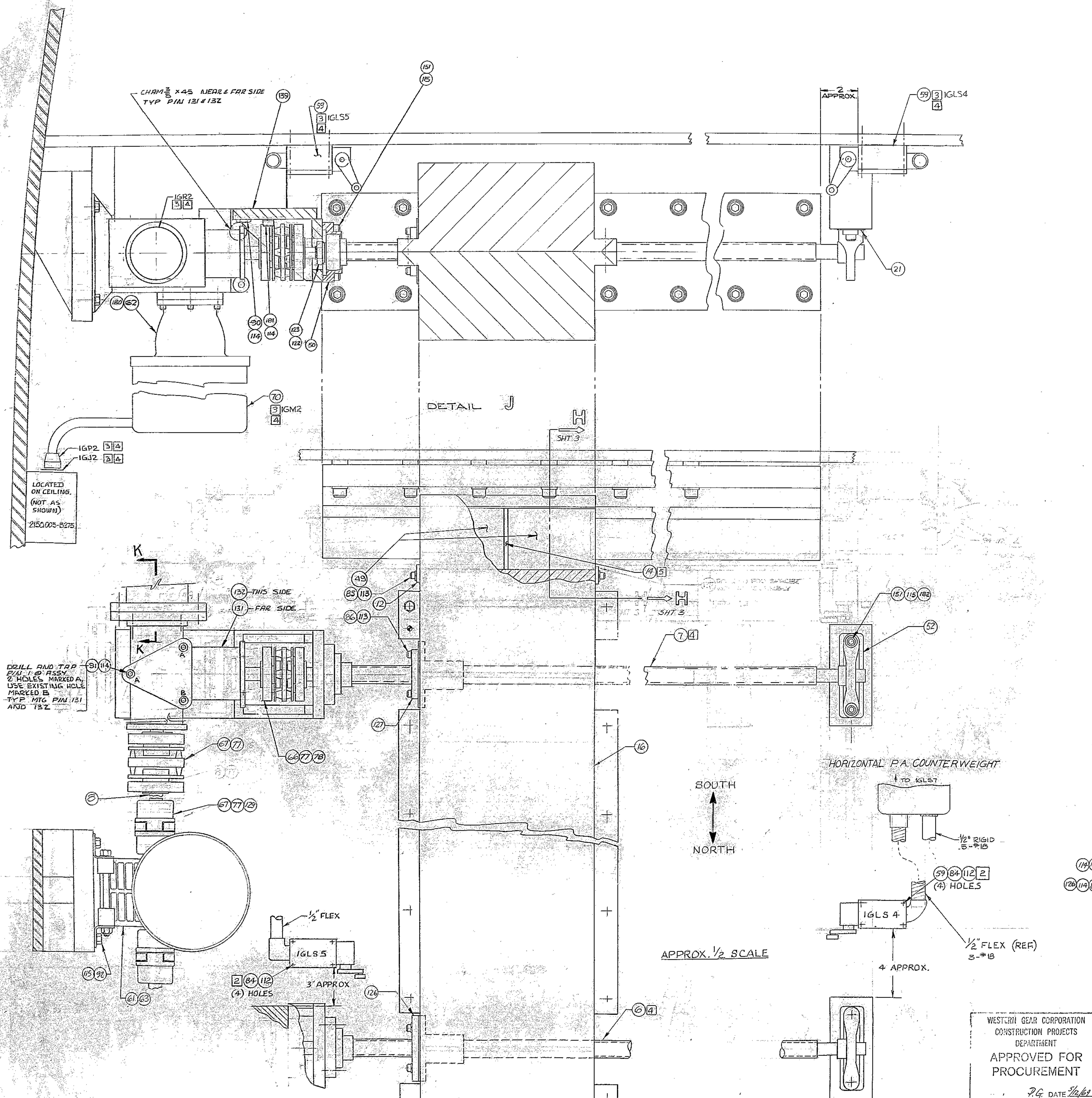


REVISIONS				
ZONE	LTR	DESCRIPTION	DATE	APPROVED
A		REVISED REL FOR MANR PER A.U.R.A	5/12/53	W.C.
B		SEE SHTS 1&2	10/27	W.C.
C		SEE SHT 3		
D		MOVED SPACER PIN 14 FROM BETWEEN BUSHINGS PIN 3 & 49 - ADDED PIN 151	11/24/53	J.W.
F		ADDED ELECT. CONDUIT REF'S	6-3-51	J.W.
G		ADDED ELECT. REF.	6-29-51	L.D.S.
H		REVISED PER ALRA COMMENTS	7-15-51	J.W.
N		ADD PIN 180 AND DEL. TRAP PIN 183 ASSEY DELETE PIN 51. PIN 151 AND 115 WAS 95 AND 116. ADD PIN 116 & 126 RELOCATED PIN 151 132 RELOCATED POT ADD PIN 181 & 182	7/1/53	L.D.S.
P		DEL. CONDUIT, HARDWR. & RELATED NOTES DEL. 1GLS 4 & 5 ADD 1GLS 4 & 5, "APPROX. 1/2 SCALE" RE-DRAW 1GLS 4 & 5	6/1/53	
Q		CORRECTED CONDUIT TO 1GLS 4	4-28-53	V.R.



SEE B/M: 2150.250A002 (W.G.C112909)
NEXT ASSY: 2150.201E002 (W.G.N102907)

FIND NO.	PART NO.	DESCRIPTION	QTY	MATERIAL	CODE IDENT
LIST OF MATERIAL (LM)					
LIMITS ON MACHINED DIMENSIONS EXCEPT AS NOTED: ANGULAR = ± 1°; LINEAR: .XX = ± .03; .XXX = ± .010; FRACTIONAL = ± 1/32; BREAK ALL SHARP EDGES					
150" STELLAR TELESCOPE MOUNTING		WESTERN GEAR CORPORATION HEAVY MACHINERY DIVISION EVERETT, WASHINGTON			
DRAWN: BAIRE #		CHECK: BAIRE #			
ENGR: BAIRE #		HORSESHOE ASSY			
W.G.N 102 901		SIZE CODE IDENT NO.		REV	
APPROVED		E 16603		2150.250E002	
		SCALE NOTED		1/1	

WESTERN GEAR CORPORATION
CONSTRUCTION PROJECTS
DEPARTMENT
APPROVED FOR
PROCUREMENT
P.G. DATE 7/2/53

1163